

1997

Ya Tirah Tiri

Follow this and additional works at: https://scholarworks.wm.edu/memea_sheetmusic



Part of the [Ethnomusicology Commons](#)

Recommended Citation

"Ya Tirah Tiri" (1997). *Sheet Music*. 55.

https://scholarworks.wm.edu/memea_sheetmusic/55

This Sheet Music is brought to you for free and open access by the Middle Eastern Music Ensemble Archive at W&M ScholarWorks. It has been accepted for inclusion in Sheet Music by an authorized administrator of W&M ScholarWorks. For more information, please contact scholarworks@wm.edu.

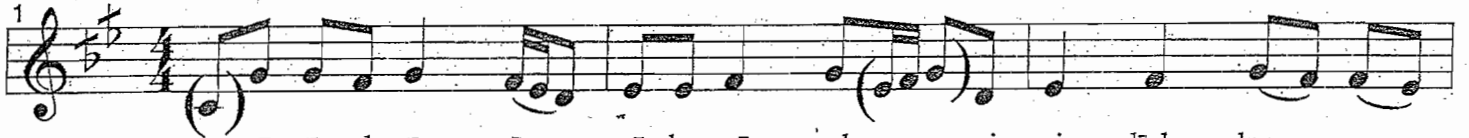
Yā Tīrah Tīrī

composer: Ahmad Abu Khalil al-Qabbani, composer of muwashshahat and theatrical songs (1841-1902)

maqām: Rāst

Beledi

transcription: Nabil Azzam/SLM



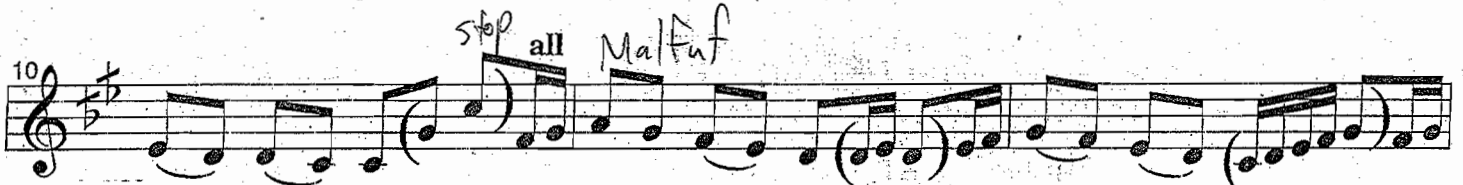
yā tī-rah tī - rī — yā ḥa-mā - mah w-in - zi - lī-b - dum — mar —
 yā tī-rah yā ḥil — wah ta - 'ā - lī w-iḥ - kī - lū 'al — li sha -
 yā tī-rah tī - rī — bi - wā — dī - nā w-iḥ - kī - lū 'al — li-m —



wi-l — hā — mah ḥā - tī - lī min ḥib — bi 'a - lā - mah ḥā-l -
 ghal — bā — lī 'ū - li - lū ḥub - bak — yih — lā - lī yā
 jā — fī — nā 'ū - li - lū ḥub - bak — kā — wī - nā yā



ās - mar 'a — bū-l — khāl — yik - fā 'a - zā — bi ḥa -
 as - mar y-a — bū-l — khāl —
 as - mar y-a — bū-l — kha'l —



rām — w-al — lāh a-nā 'a - lā dī — nī jan - nan — tī — nī a-nā



'a - lā dī — nī jan - nan — tī — nī 'a - lā dī - n-il - 'ish - '(i) ḥa -



rām w-al - lāh slow >>> FIN