

1990

Dulab Bayyati Rasmussen

Follow this and additional works at: https://scholarworks.wm.edu/memea_sheetmusic



Part of the [Ethnomusicology Commons](#)

Recommended Citation

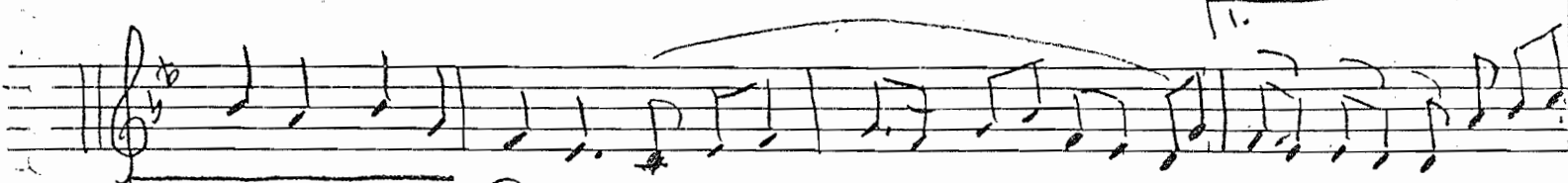
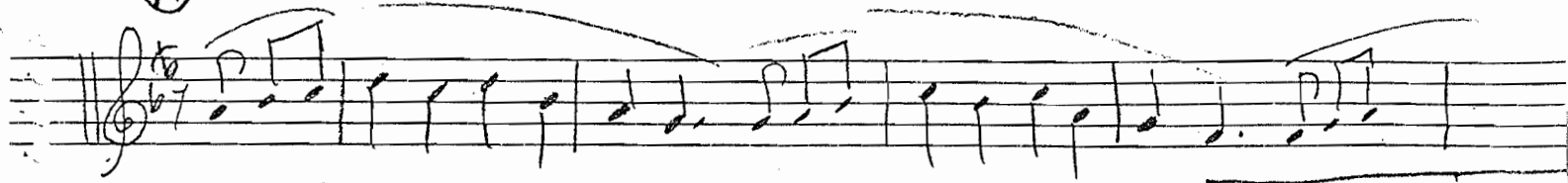
"Dulab Bayyati Rasmussen" (1990). *Sheet Music*. 59.
https://scholarworks.wm.edu/memea_sheetmusic/59

This Sheet Music is brought to you for free and open access by the Middle Eastern Music Ensemble Archive at W&M ScholarWorks. It has been accepted for inclusion in Sheet Music by an authorized administrator of W&M ScholarWorks. For more information, please contact scholarworks@wm.edu.

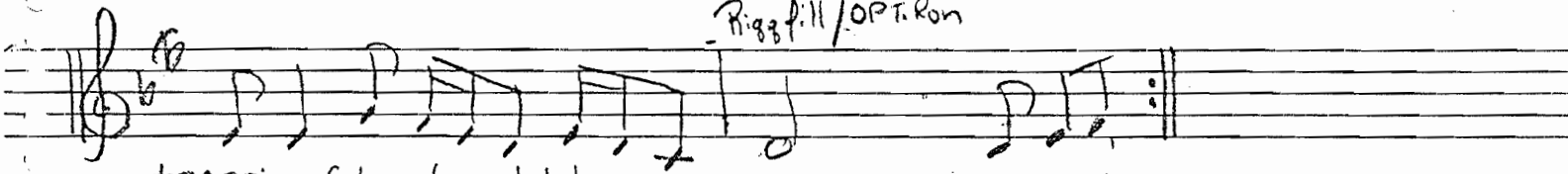
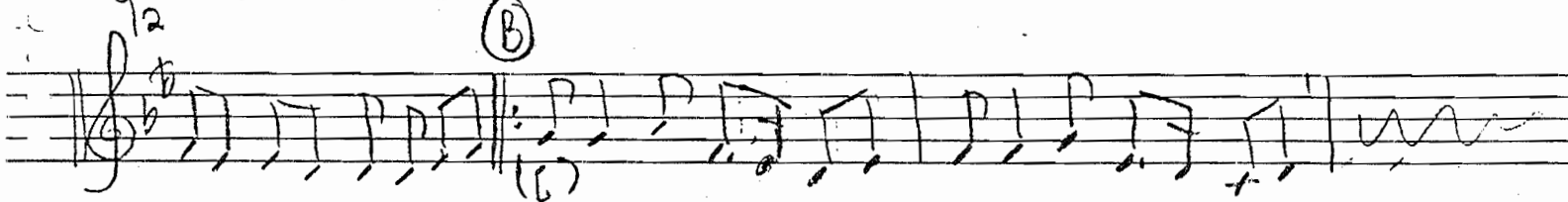
Dulab Bayyati

tr. A. Rasmussen 1990

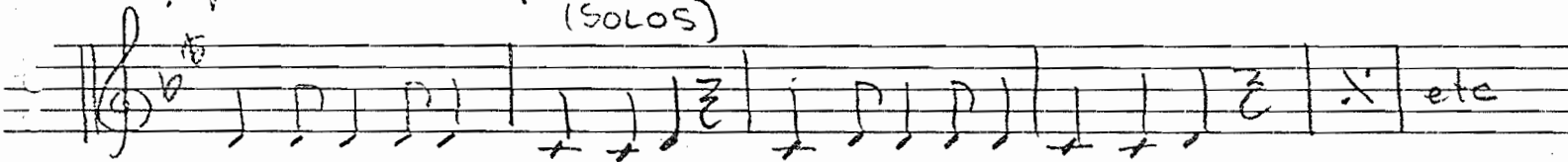
(A)



(B)



tagasim sala al-wahdah
(SOLOS)



Back to B after Solos.

FORM: ABA with optional tagasim section