
Sheet Music

Middle Eastern Music Ensemble Archive

2010

Dulab Collection

Follow this and additional works at: https://scholarworks.wm.edu/memea_sheetmusic



Part of the [Ethnomusicology Commons](#)

Recommended Citation

"Dulab Collection" (2010). *Sheet Music*. 64.
https://scholarworks.wm.edu/memea_sheetmusic/64

This Sheet Music is brought to you for free and open access by the Middle Eastern Music Ensemble Archive at W&M ScholarWorks. It has been accepted for inclusion in Sheet Music by an authorized administrator of W&M ScholarWorks. For more information, please contact scholarworks@wm.edu.

Inverted b^{\flat} or b^{\flat} means $\frac{1}{2}$ Flat.

Bayat →

دولاب بیانی

Musical notation for Bayat (Dolab Biyani) in 2/4 time, featuring a key signature of one flat (B-flat). The notation consists of three staves of music.

Bayat ↻

دولاب بیانی

Musical notation for Bayat (Dolab Biyani) in 2/4 time, featuring a key signature of one flat (B-flat). The notation consists of two staves of music.

Musical notation for Bayat (Dolab Hajar) in 2/4 time, featuring a key signature of one flat (B-flat). A circled section of the first staff is indicated by an arrow from the left.

دولاب حجار

Hijaz ↻

Musical notation for Hijaz (Dolab Hajar) in 2/4 time, featuring a key signature of one sharp (F-sharp). The notation consists of two staves of music.

Musical notation for Hijaz (Dolab Hajar) in 2/4 time, featuring a key signature of one sharp (F-sharp). The notation consists of one staff of music.

Musical notation for Hijaz (Dolab Hajar) in 2/4 time, featuring a key signature of one sharp (F-sharp). The notation consists of one staff of music.

Saba^c

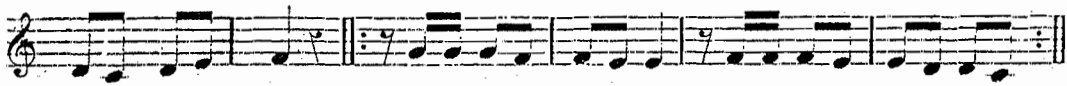
دولاب صبا

Musical notation for Saba (Dolab Saba) in 2/4 time, featuring a key signature of one flat (B-flat). The notation consists of one staff of music.

Musical notation for Saba (Dolab Saba) in 2/4 time, featuring a key signature of one flat (B-flat). The notation consists of one staff of music.

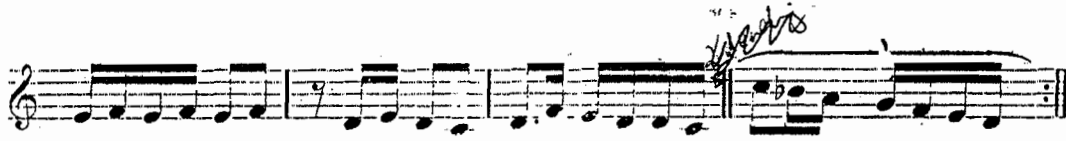
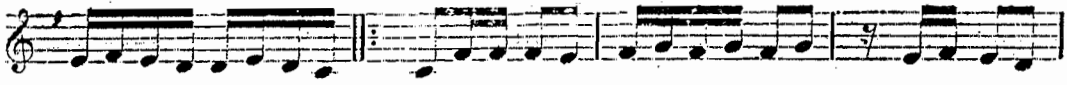
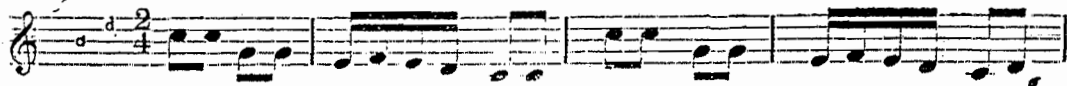
Saba^c

دولاب صبا



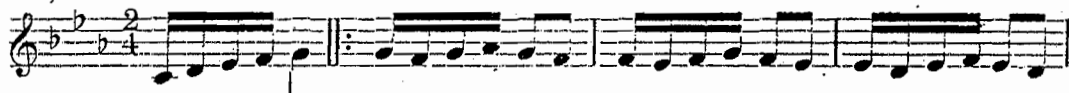
Rast

دولاب راست



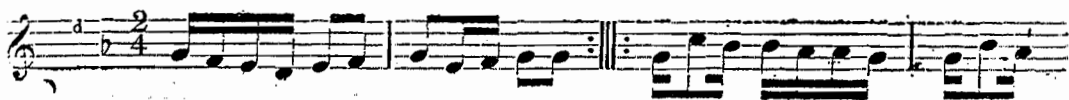
Nahawand

دولاب نهاوند



Nava → Huzam

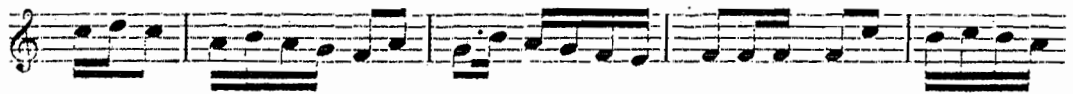
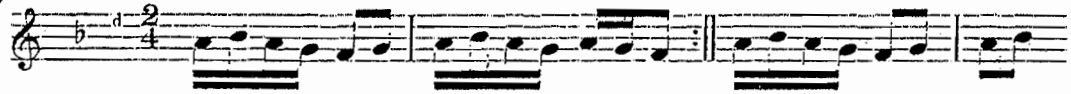
دولاب هزام



hazār (cont.)

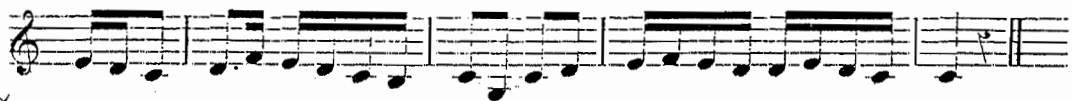
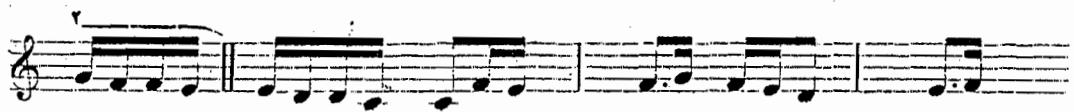
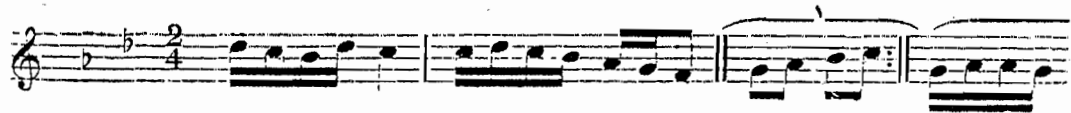


~~Hijaz kar~~ ~~Si~~ ~~hark~~ = 7
دولاب چهارگاه



Hijaz kar

دولاب حجازکار



Kordobay

~~Hijaz kar~~ ~~kur~~

دولاب کردیلی حجازکار

