

---

Sheet Music

Middle Eastern Music Ensemble Archive

---

2010

## Arboresque

Follow this and additional works at: [https://scholarworks.wm.edu/memea\\_sheetmusic](https://scholarworks.wm.edu/memea_sheetmusic)



Part of the [Ethnomusicology Commons](#)

---

### Recommended Citation

"Arboresque" (2010). *Sheet Music*. 94.

[https://scholarworks.wm.edu/memea\\_sheetmusic/94](https://scholarworks.wm.edu/memea_sheetmusic/94)

This Sheet Music is brought to you for free and open access by the Middle Eastern Music Ensemble Archive at W&M ScholarWorks. It has been accepted for inclusion in Sheet Music by an authorized administrator of W&M ScholarWorks. For more information, please contact [scholarworks@wm.edu](mailto:scholarworks@wm.edu).

# Arboresque

Composed by Simon Shaheen

## Wahdah

Violin

Dm Gm F A Qanun

5 Gm Gm Dm B $\flat$  Gm A Dm<sub>3</sub>

## Malfuf

9 C B $\flat$

13 A A G B $\flat$

16 A Gm B $\flat$  E $\flat$  E $\flat$  A7#3b5

## Wahdah

20 Dm Gm F B $\flat$  Gm

## Improvisation on the Oud

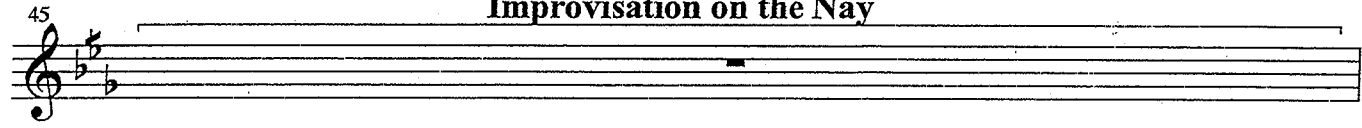
## Adagio - Zaffa Rhythm

1 x Nay  
2 x All

Arboresque 2



**Improvisation on the Nay**



**Moderato - Ayyub Rhythm**



dom dom tak

1st x Orchestra  
2nd x Nay & Qanun

Arboresque 3

50 D

2 x vln

54 A

58 Dm

62 All Fm Dm

Improvisation on the Qanun

66

68 All D Qanun

74 A Qanun Dm

80 Fm Dm 4 x Malfuf accel. dom tak tak

**Allegro - Malfuf**

Dm

85



90

A



95

Gm

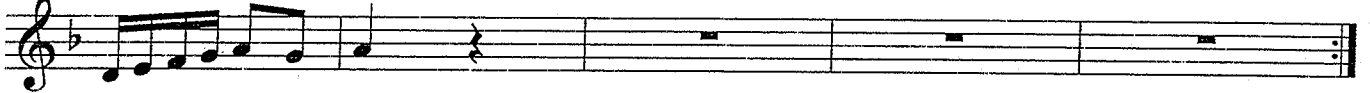
F

Gm

Dm



100



105

Dm

Gm



109

F

Gm

Dm

Gm

Dm



113

Dm

Qanun  
Cm

All  
Gm

Qanun  
F



117

All  
D

Qanun  
Gm

All  
Eb

A7



121

Dm

tr

