

2010

## Ana wa Sahrani

Follow this and additional works at: [https://scholarworks.wm.edu/memea\\_sheetmusic](https://scholarworks.wm.edu/memea_sheetmusic)



Part of the [Ethnomusicology Commons](#)

---

### Recommended Citation

"Ana wa Sahrani" (2010). *Sheet Music*. 106.

[https://scholarworks.wm.edu/memea\\_sheetmusic/106](https://scholarworks.wm.edu/memea_sheetmusic/106)

This Sheet Music is brought to you for free and open access by the Middle Eastern Music Ensemble Archive at W&M ScholarWorks. It has been accepted for inclusion in Sheet Music by an authorized administrator of W&M ScholarWorks. For more information, please contact [scholarworks@wm.edu](mailto:scholarworks@wm.edu).

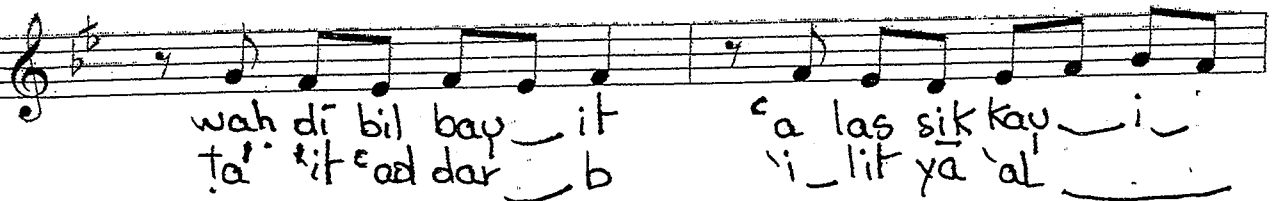
# 'ana w sihrani

Lyrics & Music  
Rahbani Brothers

كلمات و ألحان : الأخوان رحباني

*Acc  
+ ud*

*Repeat  
up an octave*



'ana w Sihrani - 2

tiw mit lid dij-rā - ni  
b jā-yi ha bī - bī

'im tuw duw way - - -

t zih-til bir dā - yi      tay-shu faL jā - - yi -

1. iw sha' sha' til - bayt      2. 'iw sha' sha' til - bayt

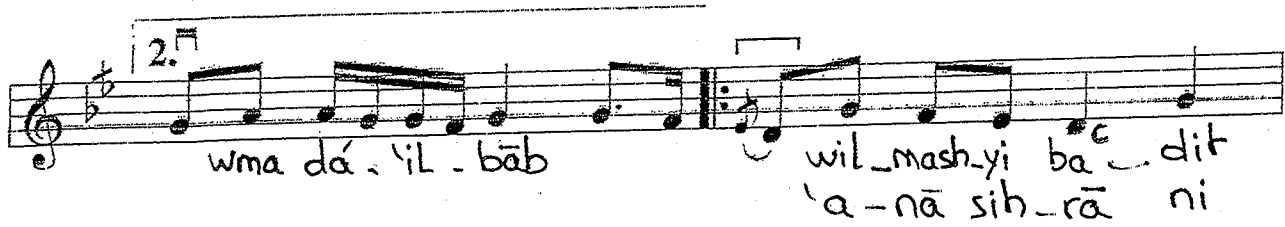
rit tab tiL maz ha - ri - - yi hay yay ti' Lü - bis - sik Kar

hit tay tish sha li ' lay - - yi wil - bis tiL 'a' di L 'ah - mar

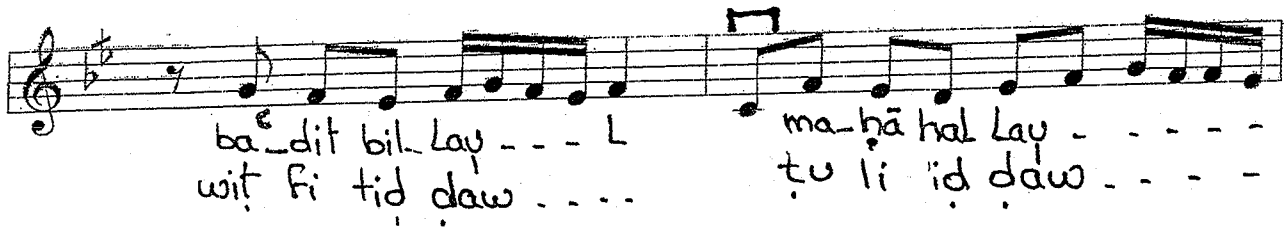
win - tar - til bā      b tal bā biy di'

1. wiL 'a' biy di'      wma dá - 'i L bab

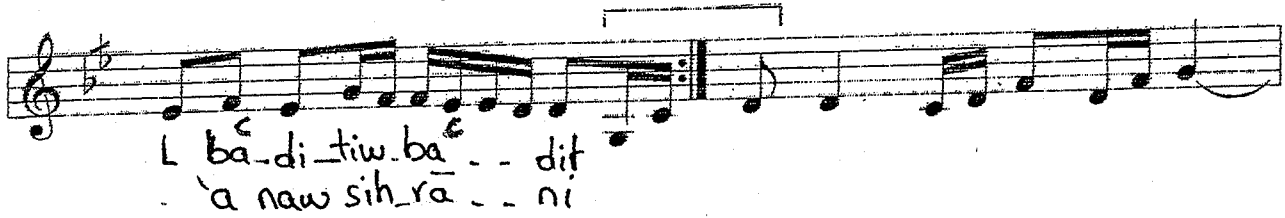
'ana w Sihrani - 3



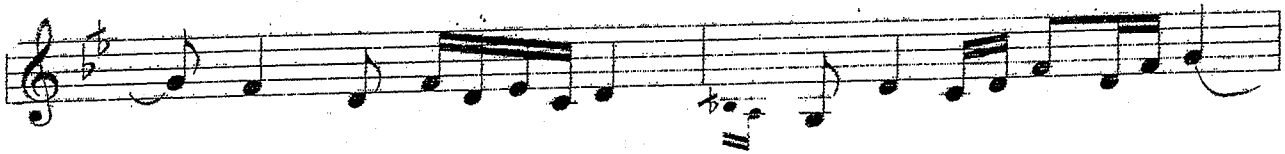
2.  
wma dá - 'il - bāb wil\_mash-yi ba<sup>c</sup> - dit  
'a - nā sih - rā ni



ba<sup>c</sup> - dit bil - lay - - - L ma - hā hal lay - - - -  
wit fi tid daw . . . . tu li 'id daw . . . .



L ba<sup>c</sup> - di - tiw - ba<sup>c</sup> - - - dit  
'a naw sih - rā - - - ni



Fin

