

2010

Ala Baladil Mahbub

Follow this and additional works at: https://scholarworks.wm.edu/memea_sheetmusic



Part of the [Ethnomusicology Commons](#)

Recommended Citation

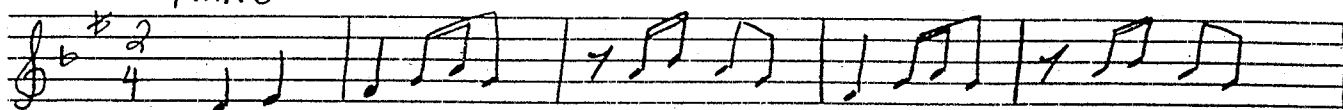
"Ala Baladil Mahbub" (2010). *Sheet Music*. 108.

https://scholarworks.wm.edu/memea_sheetmusic/108

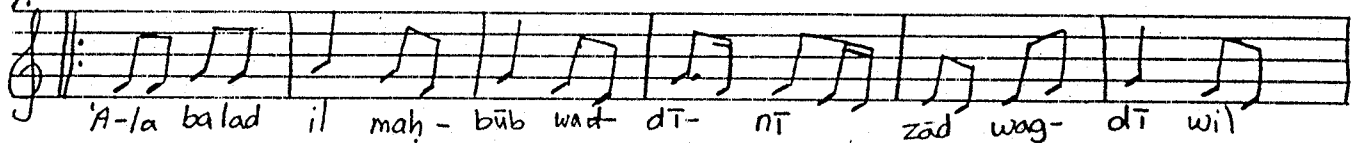
This Sheet Music is brought to you for free and open access by the Middle Eastern Music Ensemble Archive at W&M ScholarWorks. It has been accepted for inclusion in Sheet Music by an authorized administrator of W&M ScholarWorks. For more information, please contact scholarworks@wm.edu.

'Ala Baladil Mohbub

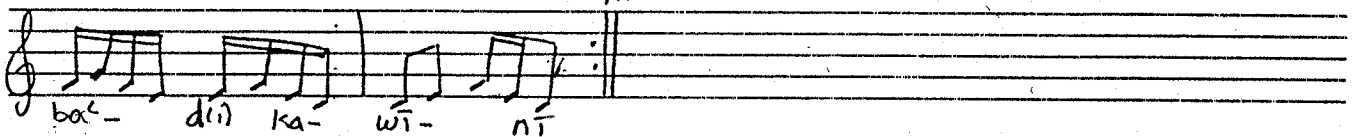
Intro



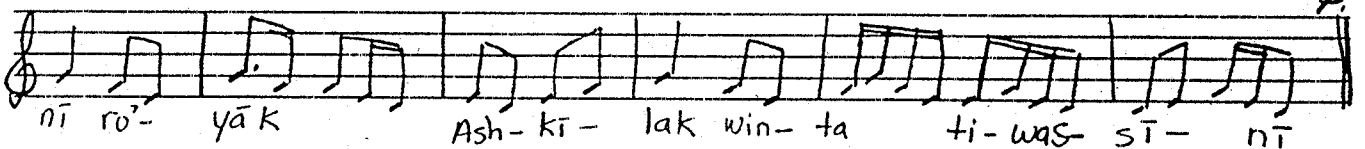
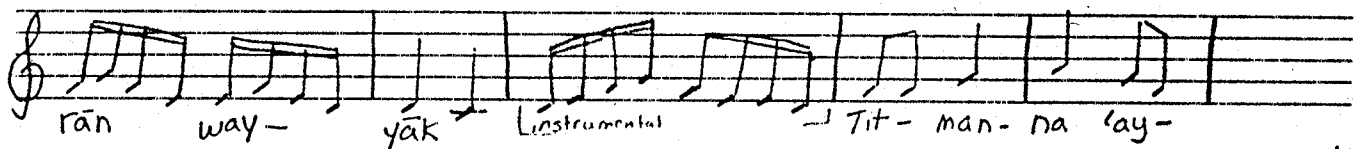
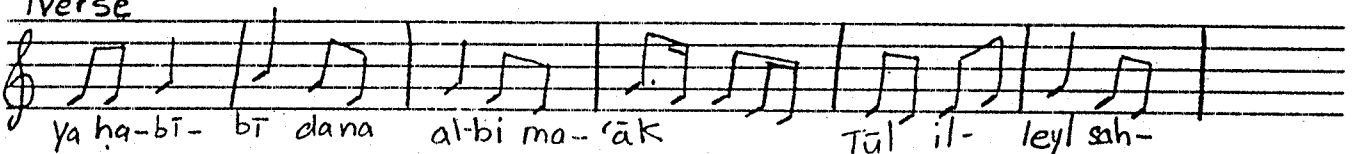
Refrain.



FIN



Verse



Verse 2: ya hana ya lammafraḥ bīk, wat-hanna bi'orbak wanageek
wa'anayya tib'a fi'eneyk, Ashkilak winta tirā'tnī

Verse 3: ya misāfir 'ala baḥr innīl, Ana liyya fi maṣr khalīl
Min ḥubbu mā banām il leyl, 'Ala baladil mahbub waddīnī

Iqaz
① Dabkah

Ala al-Daluna

Handwritten musical notation for the first staff of 'Ala al-Daluna' in 12/8 time, featuring a treble clef and a key signature of one flat.

Handwritten musical notation for the second staff of 'Ala al-Daluna' in 12/8 time, continuing the melody from the first staff.

② Ayyub or Maasum

Handwritten musical notation for the third staff of 'Ala al-Daluna' in 4/4 time, featuring a treble clef and a key signature of one flat.

③ Dabkah

Handwritten musical notation for the fourth staff of 'Ala al-Daluna' in 12/8 time, featuring a treble clef and a key signature of one flat.

FORM A A B A B C A Drum Solo

Handwritten musical notation for the drum solo section, including rhythmic patterns and lyrics:
 kebanese Dabkah Ayyub
 Dum teka Dum Dum teka Dum Dum Tek Dum ta Dum tek

Tune # 2

Dabkah

Handwritten musical notation for the first staff of 'Tune # 2' in 12/8 time, featuring a treble clef and a key signature of one flat.

Handwritten musical notation for the second staff of 'Tune # 2' in 12/8 time, continuing the melody.

Handwritten musical notation for the third staff of 'Tune # 2' in 12/8 time, continuing the melody.

Handwritten musical notation for the fourth staff of 'Tune # 2' in 12/8 time, ending with a double bar line and the instruction 'Opt. repeat octave lower'.

Handwritten musical notation for the fifth staff of 'Tune # 2' in 12/8 time, ending with the instruction 'D.S. al fine'.