

8-2010

Monitoring Report for Bald Eagles at Calvert Cliffs Nuclear Power Plant, MD: 2010 Report

B. D. Watts

The Center for Conservation Biology, bdwatt@wm.edu

Elizabeth K. Mojica

The Center for Conservation Biology, lmojica@edmlink.com

Follow this and additional works at: https://scholarworks.wm.edu/ccb_reports

Recommended Citation

Watts, B.D. and E.K. Mojica. 2010. Monitoring Report for Bald Eagles at Calvert Cliffs Nuclear Power Plant, MD. CCBTR-10-07. Center for Conservation Biology Technical Report Series. College of William and Mary, Williamsburg, VA. 3 pp.

This Report is brought to you for free and open access by the Center for Conservation Biology (CCB) at W&M ScholarWorks. It has been accepted for inclusion in CCB Technical Reports by an authorized administrator of W&M ScholarWorks. For more information, please contact scholarworks@wm.edu.

Monitoring Report for Bald Eagles at Calvert Cliffs Nuclear Power Plant, MD

2010 Monitoring Report for Federal Fish and Wildlife Eagle Scientific Collecting Permit MB207511-1

August 31, 2010

Bryan D. Watts, PhD
Elizabeth K. Mojica
Center for Conservation Biology
College of William and Mary & Virginia Commonwealth University

Recommended Citation:

Watts, B.D. and E.K. Mojica. 2010. Monitoring Report for Bald Eagles at Calvert Cliffs Nuclear Power Plant, MD. Center for Conservation Biology Technical Report Series, CCBTR-10-07. College of William and Mary & Virginia Commonwealth University, Williamsburg, VA. 3 pp.



The Center for Conservation Biology is an organization dedicated to discovering innovative solutions to environmental problems that are both scientifically sound and practical within today's social context. Our philosophy has been to use a general systems approach to locate critical information needs and to plot a deliberate course of action to reach what we believe are essential information endpoints.

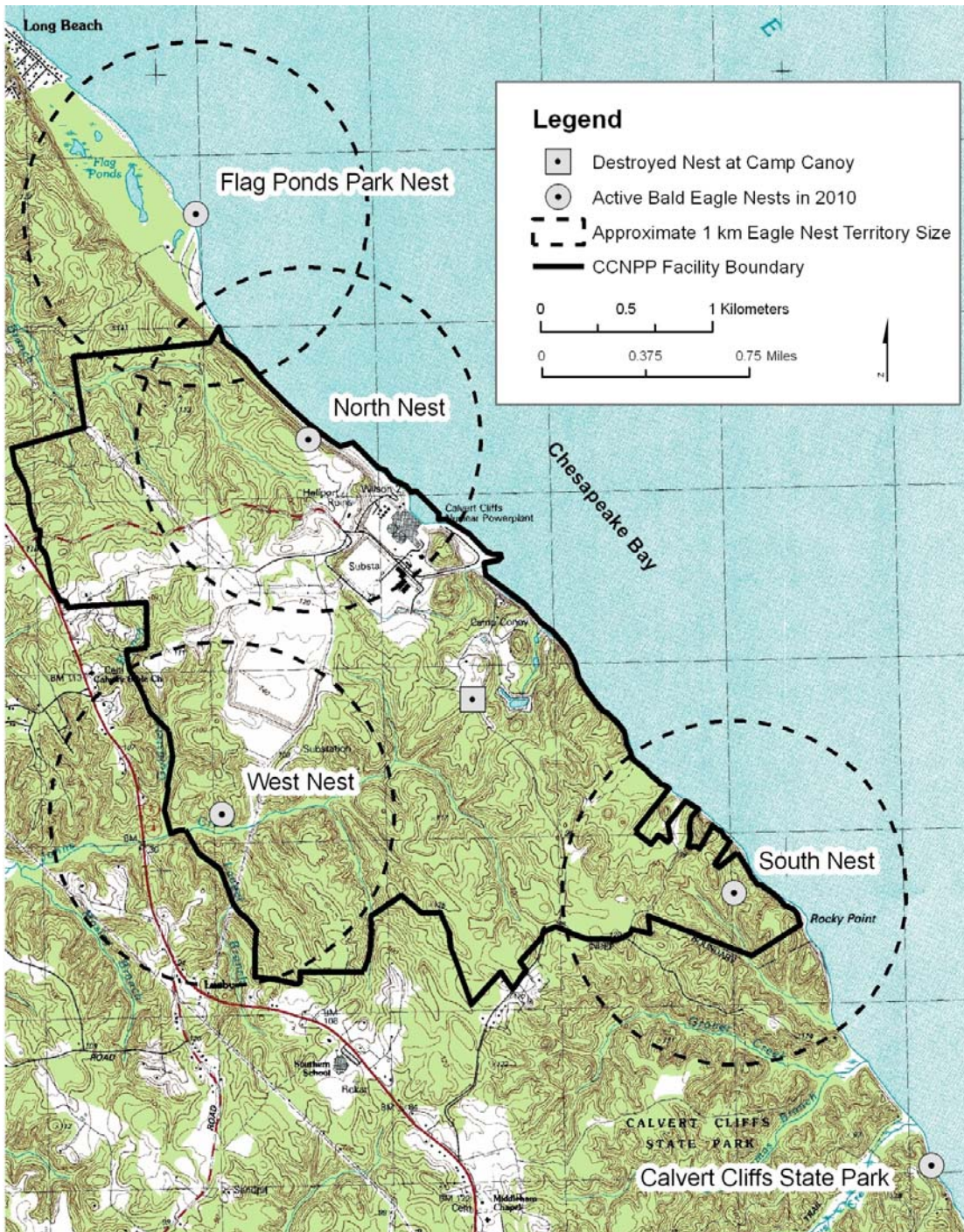
Background

Under Migratory Bird permit MB207511-1, a Bald Eagle nest was removed in the non-breeding season (10/9/2009) from the construction site of a new reactor at Calvert Cliffs Nuclear Power Plant (CCNPP), in Calvert County, Maryland.

Methods

CCNPP and surrounding properties were monitored by two observers in a 172 Cessna plane flying approximately 200-500' above the nest. Presence of adult eagles, nest contents, and condition of each nest structure were recorded.

Figure 1. Bald Eagle nests monitored during the 2010 breeding season.



Results

We monitored 4 eagle nesting territories on CCNPP for breeding attempts (Table 1). Only one nest on CCNPP successfully raised young in 2010 (South nest). Two territories were documented incubating but later failed for unknown reasons (North and West nests). The territory at Camp Conoy remained empty during the breeding season and no nesting attempts were documented.

Two nests on surrounding public lands were active during the 2010 breeding season. One nest just north of CCNPP on Flag Ponds Park was documented incubating but later failed for unknown reasons. A new territory was established southeast of the South nest in Calvert Cliffs State Park. We speculate the eagle pair from Camp Conoy could have moved south one territory since no activity was documented within Camp Conoy and this nest on the State Park was newly built.

The western shore of Maryland received multiple snow storms during the eagle breeding season this year. These storms produced high winds and 2-3' of snow. These weather conditions may have disrupted the active eagle nests in this area and caused nest failures. It is unknown if severe winter weather contributed to the failure of nests monitored in this study.

Table 1. Aerial flight observations for Bald Eagle nests surveyed on Calvert Cliffs Nuclear Power Plant and surrounding properties.

Nest	1/18/2010	2/15/2010	3/16/2010	5/26/2010
North Nest	Fresh grass lining in nest.	Incubating adult on nest	Incubating adult on nest	Nest empty, failed
West Nest	New sticks in nest. 1 adult perched on nest tree	Nest lining fresh	Incubating, 2 adults present	Nest empty, failed
South Nest	Fresh grass lining in nest. 2 adults perched nearby.	Snow in nest	No eggs, 2 adults standing in nest	2 chicks (27 days old) and 1 adult in nest
Flag Ponds Park	Fresh grass lining in nest.	Nest lining fresh	Incubating, 2 adults present	Nest empty, failed
Calvert Cliffs State Park	Nest not present on survey	Nest lining fresh but not final	Incubating adult on nest	Nest empty- partially blown out of tree
Camp Conoy	New nest not found. 1 adult present on nearby shoreline	No activity in territory	No activity in territory	No activity in territory

Future Monitoring

Aerial surveys are planned for December 2010 – May 2011 for the next eagle breeding season.