

2015

E00-110 experiment at Jefferson Lab Hall A: Deeply virtual Compton scattering off the proton at 6 GeV

M. Defurne

M. Beaumel

E. Fuchey

T. Holmstrom
William & Mary

A. Kelleher
William & Mary

See next page for additional authors

Follow this and additional works at: <https://scholarworks.wm.edu/aspubs>

Recommended Citation

Defurne, M.; Beaumel, M.; Fuchey, E.; Holmstrom, T.; Kelleher, A.; Moffit, B.; and Sulkosky, V., E00-110 experiment at Jefferson Lab Hall A: Deeply virtual Compton scattering off the proton at 6 GeV (2015). *Physical Review C*, 92(5).
10.1103/PhysRevC.92.055202

This Article is brought to you for free and open access by the Arts and Sciences at W&M ScholarWorks. It has been accepted for inclusion in Arts & Sciences Articles by an authorized administrator of W&M ScholarWorks. For more information, please contact scholarworks@wm.edu.

Authors

M. Defurne, M. Beaumel, E. Fuchey, T. Holmstrom, A. Kelleher, B. Moffit, and V. Sulkosky

E00-110 experiment at Jefferson Lab Hall A: Deeply virtual Compton scattering off the proton at 6 GeV

M. Defurne,^{1,*} M. Amaryan,² K. A. Aniol,³ M. Beaumel,¹ H. Benaoum,^{4,5} P. Bertin,^{6,7} M. Brossard,⁶ A. Camsonne,^{6,7} J.-P. Chen,⁷ E. Chudakov,⁷ B. Craver,⁸ F. Cusanno,⁹ C. W. de Jager,^{7,8} A. Deur,⁷ R. Feuerbach,⁷ C. Ferdi,⁶ J.-M. Fieschi,⁶ S. Frullani,⁹ E. Fuchey,^{6,1} M. Garçon,¹ F. Garibaldi,⁹ O. Gayou,¹⁰ G. Gavalian,² R. Gilman,¹¹ J. Gomez,⁷ P. Gueye,¹² P. A. M. Guichon,¹ B. Guillon,¹³ O. Hansen,⁷ D. Hayes,² D. Higinbotham,⁷ T. Holmstrom,¹⁴ C. E. Hyde,² H. Ibrahim,^{2,15} R. Igarashi,¹⁶ X. Jiang,¹¹ H. S. Jo,¹⁷ L. J. Kaufman,^{18,19} A. Kelleher,¹⁴ C. Keppel,⁷ A. Kolarkar,¹ E. Kuchina,²⁰ G. Kumbartzki,¹¹ G. Laveissière,⁶ J. J. LeRose,⁷ R. Lindgren,⁸ N. Liyanage,⁸ H.-J. Lu,²¹ D. J. Margaziotis,³ M. Mazouz,^{13,22} Z.-E. Meziani,²³ K. McCormick,¹¹ R. Michaels,⁷ B. Michel,⁶ B. Moffit,¹⁴ P. Monaghan,¹⁰ C. Muñoz Camacho,^{1,17} S. Nanda,⁷ V. Nelyubin,⁸ R. Paremuzyan,¹⁷ M. Potokar,²⁴ Y. Qiang,¹⁰ R. D. Ransome,¹¹ J.-S. Réal,¹³ B. Reitz,⁷ Y. Roblin,⁷ J. Roche,^{7,25} F. Sabatié,¹ A. Saha,⁷ S. Sirca,²⁴ K. Slifer,^{8,26} P. Solvignon,²³ R. Subedi,²⁷ V. Sulkosky,¹⁴ P. E. Ulmer,² E. Voutier,¹³ K. Wang,⁸ L. B. Weinstein,² B. Wojtsekhowski,⁷ X. Zheng,²⁸ and L. Zhu²⁹

(Jefferson Lab Hall A Collaboration)

¹CEA, Centre de Saclay, Irfu/Service de Physique Nucléaire, 91191 Gif-sur-Yvette, France

²Old Dominion University, Norfolk, Virginia 23508, USA

³California State University, Los Angeles, Los Angeles, California 90032, USA

⁴Syracuse University, Syracuse, New York 13244, USA

⁵Department of Applied Physics, University of Sharjah, UAE

⁶Université Blaise Pascal/CNRS-IN2P3, F-63177 Aubière, France

⁷Thomas Jefferson National Accelerator Facility, Newport News, Virginia 23606, USA

⁸University of Virginia, Charlottesville, Virginia 22904, USA

⁹INFN/Sezione Sanità, 00161 Roma, Italy

¹⁰Massachusetts Institute of Technology, Cambridge, Massachusetts 02139, USA

¹¹Rutgers, The State University of New Jersey, Piscataway, New Jersey 08854, USA

¹²Hampton University, Hampton, Virginia 23668, USA

¹³Laboratoire de Physique Subatomique et de Cosmologie, 38026 Grenoble, France

¹⁴College of William and Mary, Williamsburg, Virginia 23187, USA

¹⁵Physics Department, Cairo University, Giza 12613, Egypt

¹⁶University of Saskatchewan, Saskatchewan, Saskatchewan, Canada S7N 5C6

¹⁷Institut de Physique Nucléaire CNRS-IN2P3, Orsay, France

¹⁸University of Massachusetts Amherst, Amherst, Massachusetts 01003, USA

¹⁹Indiana University Department of Physics and CEEM Bloomington, Indiana 47405, USA

²⁰University of Kentucky, Lexington, Kentucky 40506, USA

²¹Department of Modern Physics, University of Science and Technology of China, Hefei 230026, China

²²Faculté des sciences de Monastir, 5000 Tunisia

²³Temple University, Philadelphia, Pennsylvania 19122, USA

²⁴Institut Jozef Stefan, University of Ljubljana, Ljubljana, Slovenia

²⁵Ohio University, Athens, Ohio 45701, USA

²⁶University of New Hampshire, Durham, New Hampshire 03824, USA

²⁷Kent State University, Kent, Ohio 44242, USA

²⁸Argonne National Laboratory, Argonne, Illinois 60439, USA

²⁹University of Illinois, Urbana, Illinois 61801, USA

(Received 23 April 2015; revised manuscript received 27 July 2015; published 3 November 2015)

We present final results on the photon electroproduction ($\bar{e}p \rightarrow ep\gamma$) cross section in the deeply virtual Compton scattering (DVCS) regime and the valence quark region from Jefferson Lab experiment E00-110. Results from an analysis of a subset of these data were published before, but the analysis has been improved, which is described here at length, together with details on the experimental setup. Furthermore, additional data have been analyzed, resulting in photon electroproduction cross sections at new kinematic settings for a total of 588 experimental bins. Results of the Q^2 and x_B dependencies of both the helicity-dependent and the helicity-independent cross sections are discussed. The Q^2 dependence illustrates the dominance of the twist-2 handbag amplitude in the kinematics of the experiment, as previously noted. Thanks to the excellent accuracy of this high-luminosity experiment, it becomes clear that the unpolarized cross section shows a significant deviation from the Bethe-Heitler process in our kinematics, compatible with a large contribution from the leading twist-2

*Corresponding author: maxime.defurne@cea.fr

DVCS² term to the photon electroproduction cross section. The necessity to include higher-twist corrections to fully reproduce the shape of the data is also discussed. The DVCS cross sections in this paper represent the final set of experimental results from E00-110, superseding the previous publication.

DOI: [10.1103/PhysRevC.92.055202](https://doi.org/10.1103/PhysRevC.92.055202)

PACS number(s): 25.30.Dh, 14.20.Dh, 13.60.Fz

I. INTRODUCTION

In the past two decades the deeply virtual Compton scattering (DVCS) and deep virtual meson production (DVMP) reactions have emerged as powerful probes of the quark-gluon structure of the proton, neutron, and other atomic nuclei. DVCS, specifically, refers to the reaction $\gamma^* p \rightarrow p \gamma$ in the Bjorken limit of deep inelastic scattering (DIS) $\gamma^* p$ kinematics, but at low net invariant momentum transfer t to the target (in this case the proton). Experimentally, we can access DVCS through exclusive electroproduction of real photons $ep \rightarrow ep \gamma$, where the DVCS amplitude interferes with the so-called Bethe-Heitler (BH) process (Fig. 1). Given the knowledge of the proton elastic form factors, the BH contribution is calculable in quantum electrodynamics (QED) because it corresponds to the emission of the photon by the incoming or the outgoing electron.

DVCS is the simplest probe of a new class of light-cone matrix elements called generalized parton distributions (GPDs) [1]. These reactions offer the exciting prospect of obtaining three-dimensional tomographic images of the transverse spatial distributions of partons (elementary quarks and gluons) as functions of the parton light-cone momentum fraction [1–6]. In the kinematics of the present experiment, the GPDs are dominated by the quark light-cone matrix elements. The correlation of transverse spatial and longitudinal momentum information contained in the GPDs provides a new tool to evaluate the contribution of quark orbital angular momentum to the proton spin [3].

The proof of quantum chromodynamics (QCD) factorization theorems [7,8] established that in the Bjorken limit of high Q^2 at fixed x_B , the GPDs are the leading contribution to the $\gamma^* p \rightarrow \gamma p$ amplitude in an expansion in inverse powers of Q^2 (twist expansion). Higher terms in the expansion are sensitive to more complicated correlation matrix elements (e.g., qqg correlations). The leading-order DVCS amplitude is determined by four GPDs, which are defined in terms of vector H and E and axial vector \tilde{H} and \tilde{E} light-cone matrix

elements. The GPDs enter the DVCS cross section through Compton form factors (CFFs), which are integrals over the quark loops of the two diagrams of Fig. 2. For example, the CFF \mathcal{H} corresponding to the GPD H is defined through ($f \in \{u, d, s\}$) [9]:

$$\mathcal{H}(\xi, t) = \sum_f \frac{e_f^2}{e^2} \left\{ i\pi [H_f(\xi, \xi, t) - H_f(-\xi, \xi, t)] + \mathcal{P} \int_{-1}^{+1} dx \left[\frac{1}{\xi - x} - \frac{1}{\xi + x} \right] H_f(x, \xi, t) \right\}. \quad (1)$$

Thus, the imaginary part accesses GPDs along the line $x = \pm \xi$, whereas the real part probes GPD integrals over x . The “diagonal” GPD, $H(\xi, \xi, t = \Delta^2)$, is not a positive-definite probability density; however, it is a transition density with the momentum transfer Δ_\perp Fourier conjugate to the transverse distance r between the active parton and the center of momentum of the spectator partons in the target [10]. Furthermore, the real part of the CFF is determined by a dispersion integral over the diagonal $x = \pm \xi$ plus a D term [11–14]. This D term [15] only has support in the Efremov-Radyushkin-Brodsky-Lepage region $|x| < \xi$, in which the GPD is determined by $q\bar{q}$ exchange in the t channel.

GPDs have generated intense experimental activity. Beam-spin asymmetries for DVCS in the valence region were first measured by the HERMES [16] and CLAS [17] collaborations. Cross sections were first measured at low x_B by the H1 [18] and ZEUS collaborations [19]. These results were followed with more detailed studies of the Q^2 , W^2 , and t dependence of the cross sections [20–23]. The HERMES collaboration measured a diverse range of asymmetries on the proton, including longitudinal-spin [24], transverse-spin [25,26], beam-charge [27], and kinematically complete beam-spin asymmetries [28]. HERMES also published an analysis of the beam-spin and -charge asymmetries on the unpolarized proton using the entire data set [29]. Detailed studies of

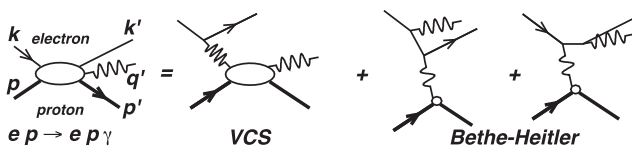


FIG. 1. Lowest-order QED amplitude for the $ep \rightarrow ep \gamma$ reaction including its decomposition. The momentum four-vectors of all external particles are labeled at left. The net four-momentum transfer to the proton is $\Delta_\mu = (q - q')_\mu = (p' - p)_\mu$. In the virtual Compton scattering (VCS) amplitude, the (spacelike) virtuality of the incident photon is $Q^2 = -q^2 = -(k - k')^2$. In the Bethe-Heitler (BH) amplitude, the virtuality of the incident photon is $-\Delta^2 = -t$. Standard (e, e') invariants are $s_e = (k + p)^2$, $x_B = Q^2/(2qp)$, and $W^2 = (q + p)^2$.

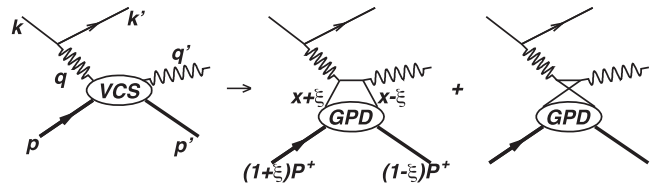


FIG. 2. The leading-order virtual Compton scattering (VCS) amplitude in the limit of large Q^2 , fixed x_B , and small $t = \Delta^2$. The kinematic variable $\xi = -(q + q')^2/[2(q + q')P]$, with $P = (p + p')/2$. In the aforementioned limit $\xi \rightarrow x_B/(2 - x_B)$ and $2\xi \rightarrow \Delta^+/P^+ = (\Delta^0 + \Delta^z)/(P^0 + P^z)$, with the z direction parallel to \mathbf{P} in the $\mathbf{q} + \mathbf{P} = 0$ center-of-mass frame. Similarly, in the middle diagram, the quark and proton lines are labeled by their “+” momentum fractions and “+” momentum components, respectively.

the DVCS cross section as a function of W^2 , Q^2 , and t by the ZEUS [19] and H1 collaborations [21] demonstrated the factorization of the cross section and the dominance of gluon GPDs at low x_B . The first measurements of the DVCS cross section in the valence region were obtained by the present experiment [30], together with an extraction of DVCS off the neutron [31]. A subsequent Jefferson Lab Hall A experiment is analyzing the beam energy dependence of the DVCS cross section [32,33]. Beam-spin and longitudinal target spin asymmetries in the valence region were measured in CLAS [34–37]. Extensive DVCS data taking has now started

with the Jefferson Lab upgrade [38]. Over the next few years, a broad GPD program is planned for the 12-GeV beams at Jefferson Lab and the high-energy muon beams at CERN in the COMPASS experiment.

II. THEORETICAL FRAMEWORK

The photon electroproduction cross section of a polarized lepton beam of energy k off an unpolarized target of mass M is sensitive to the coherent interference of the DVCS amplitude with the BH amplitude (see Fig. 1). It can be written as

$$\frac{d^5\sigma(\lambda, \pm e)}{dQ^2 dx_B dt d\phi d\phi_e} = \frac{d^2\sigma_0}{dQ^2 dx_B} \frac{1}{e^6} [|\mathcal{T}^{\text{BH}}|^2 + |\mathcal{T}^{\text{DVCS}}|^2 \mp \mathcal{I}], \quad (2)$$

$$\frac{d^2\sigma_0}{dQ^2 dx_B} = \frac{\alpha_{\text{QED}}^3}{16\pi^2(s_e - M^2)^2 x_B} \frac{1}{\sqrt{1 + \epsilon^2}}, \quad \epsilon^2 = 4M^2 x_B^2 / Q^2, \quad s_e = 2Mk + M^2, \quad (3)$$

where ϕ_e is the azimuthal angle of the scattered electron around the beam axis in the laboratory frame, ϕ is the azimuthal angle between the leptonic and hadronic planes defined in the Trento convention [39], λ is the electron helicity, and the $+$ ($-$) stands for the sign of the charge of the lepton beam. The cross section does not depend on ϕ_e and this angle is integrated over, leaving effectively a 4-differential cross section. The BH contribution \mathcal{T}^{BH} is calculable in QED, given the $\sim 1\%$ knowledge of the proton elastic form factors in our range of $-t < 0.4 \text{ GeV}^2$. The other two contributions to the cross section, the interference term \mathcal{I} and the DVCS squared term $|\mathcal{T}^{\text{DVCS}}|^2$, provide complementary information on GPDs. It is possible to exploit the structure of the cross section as a function of the angle ϕ to separate up to a certain degree the different contributions to the total cross section [40]. The BH term is given in Ref. [9], Eq. (25), and only its general form is reproduced here:

$$|\mathcal{T}^{\text{BH}}|^2 = \frac{e^6 \sum_{n=0}^2 c_n^{\text{BH}} \cos(n\phi)}{x_B^2 t y^2 (1 + \epsilon^2)^2 \mathcal{P}_1(\phi) \mathcal{P}_2(\phi)}. \quad (4)$$

The harmonic terms c_n^{BH} depend upon bilinear combinations of the ordinary elastic form factors $F_1(t)$ and $F_2(t)$ of the proton. The factors \mathcal{P}_i are the electron propagators in the BH amplitude [9].

The interference term in Eq. (2) is a linear combination of GPDs, whereas the DVCS² term is a bilinear combination of GPDs. These terms have the following harmonic structure:

$$\mathcal{I} = \frac{e^6}{x_B y^3 t \mathcal{P}_1(\phi) \mathcal{P}_2(\phi)} \left\{ c_0^{\mathcal{I}} + \sum_{n=1}^3 [c_n^{\mathcal{I}} \cos(n\phi) + \lambda s_n^{\mathcal{I}} \sin(n\phi)] \right\}, \quad (5)$$

$$|\mathcal{T}^{\text{DVCS}}|^2 = \frac{e^6}{y^2 Q^2} \left\{ c_0^{\text{DVCS}} + \sum_{n=1}^2 [c_n^{\text{DVCS}} \cos(n\phi) + \lambda s_n^{\text{DVCS}} \sin(n\phi)] \right\}. \quad (6)$$

The $c_0^{\text{DVCS}, \mathcal{I}}$ and $(c, s)_1^{\mathcal{I}}$ harmonics are dominated by twist-2 GPD terms, although they do have higher-twist admixtures that must be quantified by the Q^2 dependence of each harmonic. The $(c, s)_1^{\text{DVCS}}$ and $(c, s)_2^{\mathcal{I}}$ harmonics are dominated by twist-3 matrix elements, although the same twist-2 GPD terms also contribute (but with smaller kinematic coefficients than in the lower Fourier terms). The $(c, s)_2^{\text{DVCS}}$ and $(c, s)_3^{\mathcal{I}}$ harmonics stem only from twist-2 double helicity-flip gluonic GPDs. They are formally suppressed by α_s and will be neglected here, but they do not mix with the twist-2 quark amplitudes.

The bilinear DVCS term has a twist-2 contribution that reads

$$c_0^{\text{DVCS}} = 2 \frac{2 - 2y + y^2 + \frac{\epsilon^2}{2} y^2}{1 + \epsilon^2} \mathcal{C}^{\text{DVCS}}(\mathcal{F}, \mathcal{F}^*), \quad (7)$$

where \mathcal{F} represents the set $\{\mathcal{H}, \mathcal{E}, \tilde{\mathcal{H}}, \tilde{\mathcal{E}}\}$ of twist-2 CFFs. The Fourier coefficients $c_n^{\mathcal{I}}$ and $s_n^{\mathcal{I}}$ of the interference term are

$$\begin{aligned} c_n^{\mathcal{I}} &= C_{++}^n \text{Re} \mathcal{C}_{++}^{\mathcal{I}, n}(\mathcal{F}) + C_{0+}^n \text{Re} \mathcal{C}_{0+}^{\mathcal{I}, n}(\mathcal{F}_{\text{eff}}), \\ s_n^{\mathcal{I}} &= S_{++}^n \text{Im} \mathcal{S}_{++}^{\mathcal{I}, n}(\mathcal{F}) + S_{0+}^n \text{Im} \mathcal{S}_{0+}^{\mathcal{I}, n}(\mathcal{F}_{\text{eff}}), \end{aligned} \quad (8)$$

where \mathcal{F}_{eff} stand for “effective” twist-3 CFFs [9]. The above coefficients are defined in terms of the photon helicity-conserving amplitudes,

$$\mathcal{C}_{++}^{\mathcal{I}, n}(\mathcal{F}) = \mathcal{C}^{\mathcal{I}}(\mathcal{F}) + \frac{C_{++}^{V, n}}{C_{++}^n} \mathcal{C}^{\mathcal{I}, V}(\mathcal{F}) + \frac{C_{++}^{A, n}}{C_{++}^n} \mathcal{C}^{\mathcal{I}, A}(\mathcal{F}), \quad (9)$$

$$\mathcal{S}_{++}^{\mathcal{I}, n}(\mathcal{F}) = \mathcal{C}^{\mathcal{I}}(\mathcal{F}) + \frac{S_{++}^{V, n}}{S_{++}^n} \mathcal{C}^{\mathcal{I}, V}(\mathcal{F}) + \frac{S_{++}^{A, n}}{S_{++}^n} \mathcal{C}^{\mathcal{I}, A}(\mathcal{F}), \quad (10)$$

TABLE I. Experimental $ep \rightarrow ep\gamma$ kinematics, for incident beam energy $E_b = 5.7572$ GeV. θ_q is the central value of the \mathbf{q} -vector direction. E_γ is the photon energy for $t = t_{\min}$. The dependence in momentum transfer to the proton was studied using five bins in t taken in the interval $[-0.121, -0.4]$. A subset of Kin2 and Kin3, with the cuts shown in Fig. 3, provides the kinematic settings KinX2 and KinX3 at fixed Q^2 but varying x_B . Note that only the average kinematics for each setting are listed in this table: To minimize systematic bin centering effects, the results are presented or listed using the kinematics of each bin in x_B , Q^2 , and t according to their averaged experimental value in the bin. Our extraction procedure ensures that all ϕ bins are evaluated at the same kinematic setting, as explained in Sec. IV F.

Setting	k' (GeV/c)	θ_e ($^\circ$)	Q^2 (GeV 2)	x_B	θ_q ($^\circ$)	W (GeV)	E_γ (GeV)
Kin1	3.53	15.6	1.5	0.36	-22.3	1.9	2.14
Kin2	2.94	19.3	1.9	0.36	-18.3	2.0	2.73
Kin3	2.34	23.8	2.3	0.36	-14.8	2.2	3.32
KinX2	2.94	20.1	2.06	0.39	-18.6	2.03	2.71
KinX3	2.36	23.1	2.17	0.34	-14.5	2.26	3.33

and helicity-changing amplitudes,

$$\mathcal{C}_{0+}^{\mathcal{I},n}(\mathcal{F}_{\text{eff}}) = \frac{\sqrt{2}}{2-x_B} \frac{\tilde{K}}{Q} \left[\mathcal{C}^{\mathcal{I}}(\mathcal{F}_{\text{eff}}) + \frac{C_{0+}^{V,n}}{C_{0+}^n} \mathcal{C}^{\mathcal{I},V}(\mathcal{F}_{\text{eff}}) + \frac{C_{0+}^{A,n}}{C_{0+}^n} \mathcal{C}^{\mathcal{I},A}(\mathcal{F}_{\text{eff}}) \right], \quad (11)$$

$$\mathcal{S}_{0+}^{\mathcal{I},n}(\mathcal{F}_{\text{eff}}) = \frac{\sqrt{2}}{2-x_B} \frac{\tilde{K}}{Q} \left[\mathcal{C}^{\mathcal{I}}(\mathcal{F}_{\text{eff}}) + \frac{S_{0+}^{V,n}}{S_{0+}^n} \mathcal{C}^{\mathcal{I},V}(\mathcal{F}_{\text{eff}}) + \frac{S_{0+}^{A,n}}{S_{0+}^n} \mathcal{C}^{\mathcal{I},A}(\mathcal{F}_{\text{eff}}) \right]. \quad (12)$$

The complete expressions of kinematic coefficients C_{ab}^n , S_{ab}^n and \tilde{K} are given in Ref. [41]. The $\mathcal{C}^{\mathcal{I}}$ and $\mathcal{C}^{\text{DVCS}}$ terms are respectively linear and bilinear combination of CFFs. For example,

$$\mathcal{C}^{\mathcal{I}}(\mathcal{F}) = F_1 \mathcal{H} + \xi(F_1 + F_2) \tilde{\mathcal{H}} - \frac{t}{4M^2} F_2 \mathcal{E}. \quad (13)$$

III. THE E00-110 EXPERIMENT

The E00-110 [42] experiment ran in Hall A at Jefferson Lab in the fall of 2004. Its goal was to measure the Q^2 dependence of the DVCS¹ helicity-dependent cross sections at fixed value of x_B :

$$d^4\sigma = \frac{1}{2} \left[\frac{d^4\sigma(\lambda = +1)}{dQ^2 dx_B dt d\phi} + \frac{d^4\sigma(\lambda = -1)}{dQ^2 dx_B dt d\phi} \right], \quad (14)$$

$$\Delta^4\sigma = \frac{1}{2} \left[\frac{d^4\sigma(\lambda = +1)}{dQ^2 dx_B dt d\phi} - \frac{d^4\sigma(\lambda = -1)}{dQ^2 dx_B dt d\phi} \right]. \quad (15)$$

Table I summarizes all the kinematic settings of this experiment. In addition to the Q^2 dependence at fixed x_B , we present here new results on the x_B dependence of the DVCS cross section at fixed Q^2 by using a subset of the data from the Kin2 and Kin3 settings with $1.95 < Q^2 < 2.30$ GeV 2 , as illustrated in Fig. 3. We labeled these new settings KinX2

and KinX3. They are centered at $x_B = 0.40$ and $x_B = 0.34$, respectively, for an averaged $Q^2 = 2.1$ GeV 2 .

The setup of the experiment is shown in Fig. 4. To counter the small cross section, this experiment used the high luminosity in Hall A of Jefferson Lab, running at 10^{37} cm $^{-2}$ s $^{-1}$, which corresponds to 2.25 μ A of electron beam on a 15-cm-long liquid hydrogen target. The scattered electron was detected in the Hall A left high-resolution spectrometer (HRS), which provides a momentum resolution $\delta p/p = 2 \times 10^{-4}$ and an angular resolution of 2 mrad in the horizontal plane [43]. This pinpoints the electron kinematics (x_B and Q^2), the electron scattering plane, and the momentum direction \mathbf{q} of the virtual photon of the virtual Compton amplitude. The emitted photon was detected in an electromagnetic calorimeter covering ~ 0.1 sr, with its front face 1.1 m from the target center and centered in the direction of the virtual photon (shifted by half a calorimeter block). The spectrometer acceptance of 6 msr and $\pm 4.5\%$ in momentum selects virtual photons in a small solid angle of ~ 3 msr, as illustrated in Fig. 5. The detected photon direction (two angles) with respect to the virtual photon direction (calculated using the electron kinematics) determines the remaining two kinematic variables of the reaction: t and ϕ . The measurement of the detected photon energy allows for an exclusivity cut based on the squared missing mass

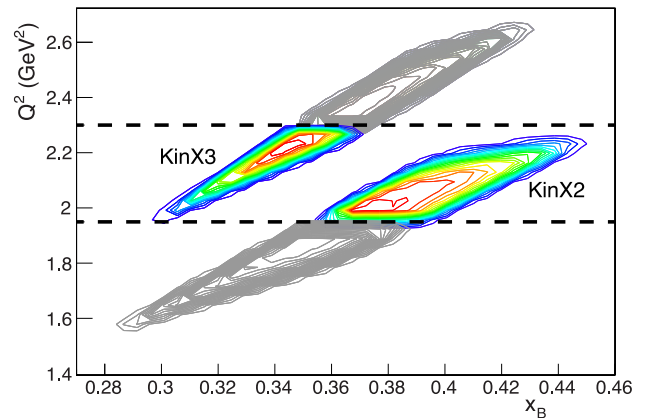


FIG. 3. (Color online) Distribution of $H(e,e'\gamma)X$ events in the $[x_B, Q^2]$ plane, for Kin2 ($x_B = 0.36$, $Q^2 = 1.9$ GeV 2) and Kin3 ($x_B = 0.36$, $Q^2 = 2.3$ GeV 2). Events for KinX2 ($x_B = 0.39$, $Q^2 = 2.06$ GeV 2) and KinX3 ($x_B = 0.34$, $Q^2 = 2.17$ GeV 2) are bounded by the two horizontal lines at $Q^2 = 1.95$ GeV 2 and $Q^2 = 2.30$ GeV 2 .

¹Formally, DVCS refers only to the subprocess $\gamma^* p \rightarrow \gamma p$. However, DVCS is often used more loosely in the literature to name the photon electroproduction process $ep \rightarrow ep\gamma$ used experimentally.

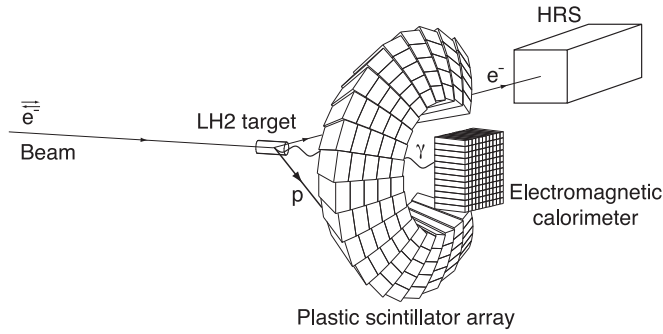


FIG. 4. Setup of the E00-110 experiment in Hall A of Jefferson Lab. The photon calorimeter as well as the proton array were centered on the virtual photon direction \mathbf{q} , then shifted sideways by half a calorimeter block away from the beam to limit the singles rate on the detector elements close to the beamline.

of the recoil proton. As a cross check on exclusivity, the recoil proton was detected in the proton array, a set of 100 blocks of plastic scintillator in a C-ring configuration around the virtual photon direction. This geometry was selected to have a simple azimuthal symmetry around the virtual photon direction, which is a key element for a smooth ϕ acceptance.

The basic equipment of Hall A, including the beamline, target system, and dual spectrometers is described in Ref. [43]. The following sections provide details specific to the present experiment.

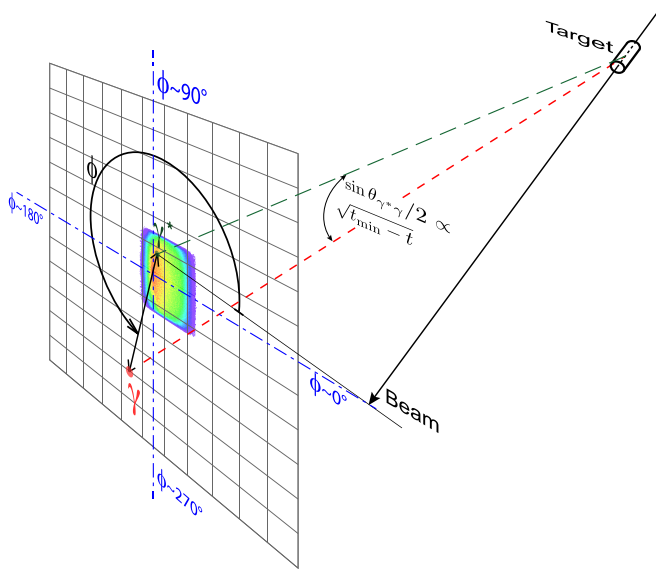


FIG. 5. (Color online) Perspective view of the downstream face of electromagnetic calorimeter. The virtual photon (γ^*) acceptance is shown projected on the calorimeter plane. The distance (black line) between the “impact” of the virtual photon and the detected real photon (γ) position is roughly proportional to $\sqrt{t - t_{\min}}$ for the small $t_{\min} - t$ values of this experiment. The angle ϕ is the azimuthal angle of the photon with respect to the plane formed by the incident beam and the virtual photon. For the central (e, e') kinematics indicated by γ^* , ϕ is measured counterclockwise from the horizontal (to the right) direction.

A. Electron beam

1. Beam energy

The incident beam energy is measured by determining its bend in the arc section of the Hall A beamline [44]. Its deflection angle is computed from a set of wire scanners. The magnetic field integral of the eight dipoles of the beamline is compared to a reference magnet (ninth dipole). The measurement of the beam energy made during the experiment resulted in the value $E_b = 5757.2 \pm 0.1_{\text{stat}} \pm 0.1_{\text{syst}}$ MeV.

2. Beam current

The beam current is measured using two resonant rf cavity monitors (beam current monitors) tuned at the frequency of the accelerator (1.497 GHz). The voltage at their outputs is proportional to the beam current and provides a continuous monitoring of its value during the experiment. The absolute reference is provided by a separate monitor, a parametric current transformer [43], which is calibrated by passing current of known value through a wire inside the beam pipe.

3. Beam polarization

The electron beam polarization was measured concurrently with the regular data taking using the Hall A Compton polarimeter [45]. At the entrance of the Hall, the beam is deflected by a chicane and interacts with a circularly polarized photon beam. The polarization of the electron beam can be obtained from the counting rate asymmetry from opposite beam helicities. The electrons that interact with the photon beam are detected by silicon microstrips, while those that do not interact continue towards the experimental target. The photon beam is provided by a resonant Fabry-Pérot cavity that amplifies a 230-mW Nd:YAG laser ($\lambda = 1064$ nm) to 1200 W.

The statistical uncertainty of a Compton measurement is inversely proportional to the square root of the number of events and to the analyzing power of the polarimeter. In this experiment, a 1% statistical uncertainty could be achieved in 2.5 h of data taking. However, this is far from being the limiting factor. Because the Compton data were taken during normal DVCS running, we can average over long periods of time to make the statistical uncertainty negligible.

Beam polarization results can be readily obtained from the electron detector. The electron detector consists of four planes of 48 silicon microstrips, standing 4.6 mm above the beam axis during the DVCS experiment. Figure 6 (top) shows the electron counting rate versus strip number in one of the detector planes for a typical Compton run of 3 h duration. The detector is located behind the third dipole of the Compton chicane and the strip number gives the position of the scattered electron along the dispersive axis with a resolution of 200 μm . Hence, the horizontal axis of the plot is proportional to the energy lost by the electron (and given to the photon). The Compton energy spectrum shows up as a flat rate on the first strips. The background spectrum has a $1/E$ shape, like bremsstrahlung. The differential asymmetry as a function of the electron energy (strip number) is shown in the bottom plot of Fig. 6 for each of the laser polarization states.

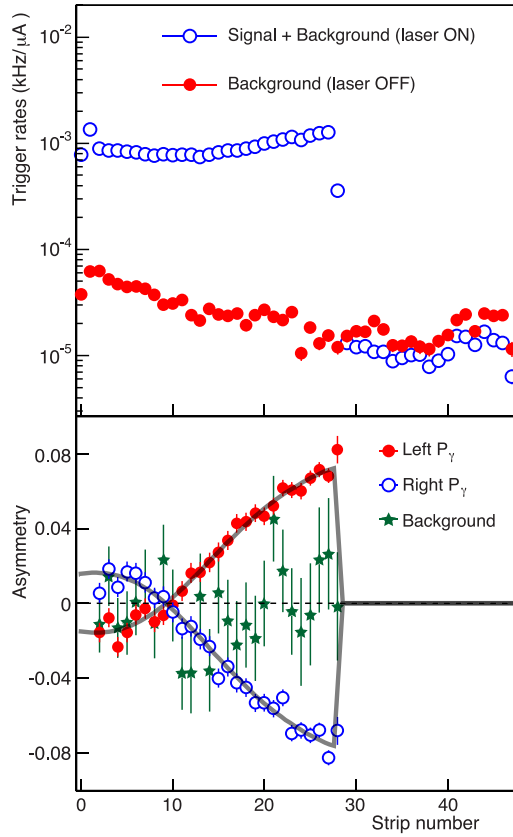


FIG. 6. (Color online) Signal and background rates (normalized to the electron beam current) in one of the planes of the electron detector as a function of strip number (top) and asymmetry measured for each of the laser polarization states and the background as a function of strip number (bottom).

The systematic uncertainty in the polarization measurement owing to the uncertainty of the laser polarization is 0.7%. The maximum deviation of scattered electrons for a beam energy of ~ 5.75 GeV is 21.5 mm at the electron detector plane, which makes a calibration error of $200 \mu\text{m}/21.5 \text{ mm} = 0.93\%$, which propagates to 1.9% to the polarization measurement. The total systematic uncertainty associated to the beam polarization measurement is 2%.

Figure 7 shows the Compton polarimeter results for the full experiment duration, where only the electron detector was used in the analysis. A constant fit to these data yields an average beam polarization value of $75.3 \pm 0.1_{\text{stat}} \pm 2.0_{\text{syst}}\%$ during the experiment. The low polarization values at the beginning of the experiment (first three points in Fig. 7) correspond to the period when the polarization was not yet optimized for Hall A.

B. Liquid hydrogen target

The standard Hall A cryogenic target system [46] was mounted inside a 60-cm-radius scattering chamber custom built for the E00-110 experiment. The scattering chamber wall was much thinner than the 2-inch aluminum wall of the usual Hall A scattering chamber. The scattering chamber was made of a 1-cm spherical shell of aluminum, allowing for low-energy protons to go through (minimum momentum of

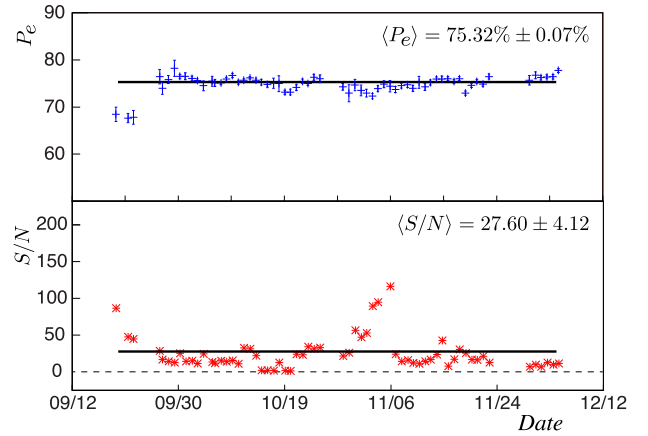


FIG. 7. (Color online) Compton polarimeter results, using only the electron detector. Beam polarization is shown in the top plot. The bottom plot shows the signal-to-background ratio. The first three points in the beginning of the experiment correspond to a nonoptimal Wien angle setting.

305 MeV/c, corresponding to a cut on the kinematic variable $-t > 0.09 \text{ GeV}^2$). Moreover, the new scattering chamber accommodates the spherical symmetry of the reaction and makes energy losses nearly independent of the scattering angle, except for extended target effects. Finally, a larger-diameter exit beam pipe was constructed to reduce the secondary background in the electromagnetic calorimeter.

The cryogenic target has three target loops, two of which were used for the DVCS experiment: a liquid hydrogen (LH_2) loop and a liquid deuterium (LD_2) loop.² Each of the two liquid loops had an aluminum cylindrical target cell, 15 cm long with 125- μm walls. An additional solid target ladder was attached to the system for calibration purposes. The targets are arranged in a vertical stack, which can be moved from one position to another by remote control. The solid target ladder contained the following targets:

- (i) optics, seven 1-mm-thick carbon foils used for optics calibration of the HRS;
- (ii) two dummy targets, ± 2 and ± 7.5 cm Al foils to study target walls effects;
- (iii) cross hair, aluminum foil with a milled cross, used to measure beam position with respect to the target;
- (iv) BeO, which makes it possible to see the beam spot at the target through a camera installed in the scattering chamber.
- (v) C, 1-mm-thick carbon, serving as a pointlike target;
- (vi) empty, position used to reduce radiation on detectors while the beam was used for other purposes (beam size measurements using wire scanners and other beam tunings).

²The deuterium loop was only used during experiment E03-106, running just after the one described herein.

C. Hall A spectrometer

The HRS in Hall A consist of four superconducting magnets in the configuration QQDQ. In the E00-110 experiment, the left HRS was used to detect the scattered electron and therefore define the virtual photon kinematics in an accurate way. The main components of the detector stack are as follows: a set of two scintillator planes called S1 and S2m giving very fast and good timing signals; two vertical drift chambers for track reconstruction; a gas Čerenkov counter for π/e discrimination and a pion rejector composed of two layers of lead-glass blocks which is used in addition to the Čerenkov detector to select a clean sample of electrons. The efficiencies of each of the four vertical drift chamber (VDC) planes were measured to be higher than 99.98% during the experiment [47]. A fast signal from S2m in coincidence with the Čerenkov detector was used as a level 1 trigger for the rest of the electronics. It is useful to recall the angular acceptance of the left HRS for electrons: ± 30 mrad horizontal, ± 60 mrad vertical, and $\pm 4.5\%$ in momentum.

D. Calorimeter

One of the key elements of this experiment was a dedicated electromagnetic calorimeter, consisting of a 11×12 array of lead fluoride crystals, each $3 \times 3 \times 18.6 \text{ cm}^3$. The crystals were purchased from SICCAS (Shanghai). PbF_2 was selected as a pure Čerenkov medium, to minimize hadronic backgrounds and to obtain the shortest possible signal without exponential tails. The size of the blocks is adapted to the radiation length and Molière radius of PbF_2 so that a shower is almost completely contained in a cluster of nine blocks, both longitudinally and transversally. Each block was equipped with a Hamamatsu R7700 fine-mesh photomultiplier tube (PMT). During the experiment, the relative gains of the PMTs were periodically monitored using a cluster of light-emitting diodes (LEDs) that could be moved across the calorimeter face on an X - Y stage. However, the large luminosity of the experiment induced radiation damage near the front face of the blocks. Because the LED light was injected in the front face, the LED method proved unreliable to measure the true signal variation of high-energy photon or electron showers. Indeed, the Čerenkov light from a multi-GeV γ ray is mostly produced deeper in the crystal, avoiding most of the damaged area. Figure 8 shows simulated shower profiles for 4-GeV electrons at a typical energy for the electromagnetic background and for photons of various energies expected from DVCS photons.

The crystal-by-crystal calibration coefficients were obtained from kinematically overconstrained elastic scattering: $H(e, e'_{\text{Calo}} p_{\text{HRS}})$ in which the electron is detected in the calorimeter and the proton is detected in the HRS. To illuminate the full acceptance of the calorimeter with elastic electrons, it was necessary to move the calorimeter back to a distance of 5.5 m from the target center during these runs. Data at 1.1 m, covering only the center part of the calorimeter, were taken additionally as a consistency check. Figure 9 shows the energy resolution of the calorimeter as measured during the elastic calibration runs. Two elastic calibrations were made, one a few weeks after the start of the experiment and another one a few weeks before it finished. The calibration coefficients

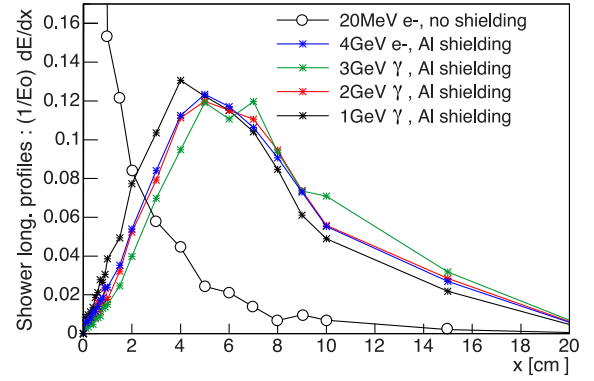


FIG. 8. (Color online) Longitudinal shower profile for different incoming particles into the DVCS calorimeter, obtained from the Monte Carlo simulation. The aluminum shielding corresponds to the total thickness of material between the target and the calorimeter crystals, and includes both the scattering chamber and some additional Al shielding in front of the calorimeter front face.

changed by a considerable amount for some blocks, but the energy resolution did not degrade during the almost 3 months of data taking. Because calibration coefficients changed with time, to keep a good energy resolution all along the experiment, we interpolated these coefficients between the two calibrations runs, together with an extrapolation before and after them. This was done based on the radiation dose accumulated by each block. This dose is proportional to the beam current and depends on the block polar angle with respect to the beamline and also on the target type (LH_2 or LD_2). The relative dose accumulation for each block was estimated from its PMT anode current monitoring [48]. In addition, the calibrations were monitored *in situ* using the missing-mass peak of the reaction $D(e, e'_{\text{Calo}} \pi_{\text{HRS}}^-) pp$ and both the missing-mass

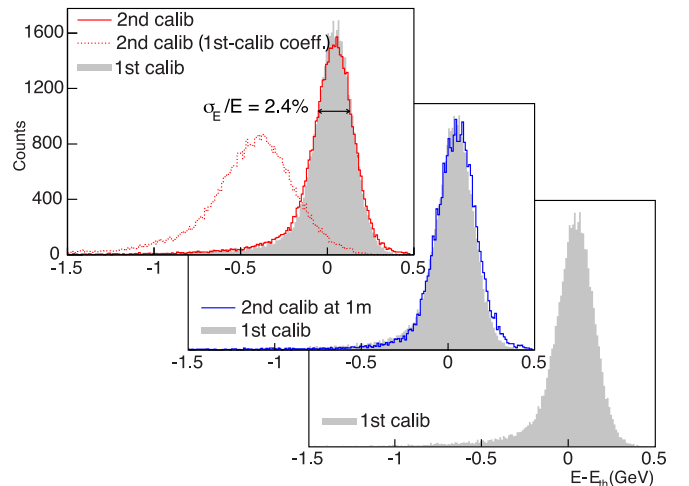
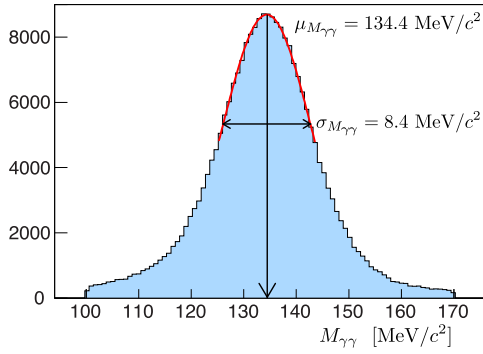


FIG. 9. (Color online) Energy measured in the calorimeter minus energy expected from elastic kinematics during elastic calibrations runs. In both elastic calibration periods, we obtained 2.4% energy resolution at an elastic energy of 4.2 GeV. The results of the second calibration when first calibration coefficients are used are also plotted to show the necessity of a careful monitoring of the coefficients between these two calibration points.

FIG. 10. (Color online) $(\gamma\gamma)$ invariant mass for Kin2.

and $(\gamma\gamma)$ invariant-mass peaks of the reaction $H(e, e'\pi^0)p$. Figure 10 shows the raw $(\gamma\gamma)$ invariant mass after calorimeter calibration for Kin2. The peak is nicely centered at the π^0 mass, the width of the distribution is 8.4 MeV. Overall, the calibration coefficients were known for any given time at the 1% level.

E. Proton array

To detect the full exclusive final state, a recoil detector was originally built to tag the DVCS proton. The recoil proton direction for an exclusive event can be inferred from the information of the HRS and the calorimeter; therefore, one can check in the proton array (PA) if the proton was actually at the right position. The main difficulties of such a detector is that it needs to detect low-momentum protons in a large acceptance, close to the beamline, with as high an efficiency as possible. The PA subtended an acceptance (relative to the nominal direction of the virtual photon) of $18^\circ < \theta_{\gamma^*p} < 38^\circ$ and $45^\circ < \phi_{\gamma^*p} < 315^\circ$, arranged in five rings of 20 detectors, as shown in Fig. 4. The scintillator blocks were fabricated by Eljen Technology as five distinct tapered trapezoids, each 30 cm long, to form a hermetic ring pointing at the target center. Each scintillator is equipped with a Photonis XP2972 PMT and a custom voltage divider-preamplifier circuit. This allowed us to operate the PMTs at low gain to accommodate the high backgrounds in this open geometry. The 90° cutoff in ϕ_{γ^*p} corresponds to the exit-beam pipe in the kinematic setting, where the detector stack is the closest to the beamline.

Note that as mentioned and justified later, the PA was only used as an exclusivity check, but not used for the final analysis of DVCS events for which only the missing-mass technique was used.

F. Sampling electronics

The E00-110 experiment was designed with open detectors at low angles (the blocks of the calorimeter closest to the beamline were at 6.5°), with limited shielding running at high luminosity. High singles rates up to 10 MHz were expected and also measured in a test run during the design phase. In this environment, regular analog-to-digital converters (ADCs) even with a reduced gate are strongly affected by pileup. We therefore chose to use digitizing electronics for all the electronic channels of the dedicated detectors (PbF₂ calorimeter and PA), namely a custom 6U 16 VERSAModule

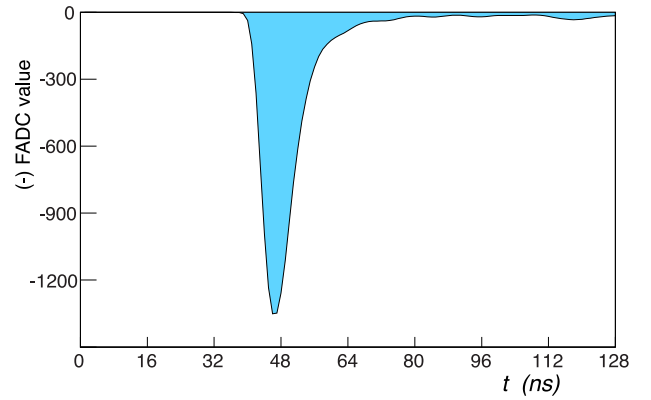


FIG. 11. (Color online) Flash ADC value as a function of time recorded by the ARS system for a typical calorimeter pulse.

Eurocard (VME) (A24/D32) module sampling system based on the analog ring sampler (ARS) CMOS application-specific integrated circuit (ASIC) developed at CEA-Saclay [49,50].

The ARS uses the concept of analog memories to sample data at a clock rate of 1 GHz: Each channel contains a circular array of 128 capacitors: Every 1 ns, the ARS points the signal to the next capacitor, eventually overwriting itself after 128 ns. When a trigger is issued, the capacitor array is isolated and the previous 128 samples are stored. During the next 500 ns, a separate trigger module (described below) decides whether to digitize the event. Following a validation from the trigger, each capacitor array is digitized in parallel using a 12-bit flash ADC at a rate of $1 \mu\text{s}$ per sample, for a total of $128 \mu\text{s}$ per channel. During this long digitization period, we observe an exponential decay of the samples. This is compensated by a stable baseline included in the pulse wave-form analysis. Each ARS ASIC contains 4 channels, and four ARS ASICs were implemented onto each VME board for a total of 16 channels per board. Figure 11 shows a typical calorimeter signal as a function of time, read out by the ARS system.

G. Trigger

The data acquisition (DAQ) trigger for this experiment was a two-level system. A standard HRS electron trigger was formed from the coincidence of the Čerenkov and S2m signals. This level-1 signal generated the “Stop” to freeze the analog data in the ARS. The “Validation,” or level-2 signal is generated by a dedicated DVCS trigger module. The DVCS trigger includes a large backplane, containing field-programmable gate array (FPGA) logic. Each PbF₂ signal is first sent to a trigger daughter card, where it is split with one branch going to an ARS input and the second branch passing to a fast ADC chip on the daughter card. Each daughter card has four channels. The 132 trigger ADCs are gated by the level-1 signal, with a programmable width generally set to 60 ns. Following digitization, the FPGA logic forms local 2×2 overlapping cluster sums. If a cluster sum is found above a programmable threshold (usually set to 1 GeV equivalent), then the level-2 validation signal is set to true. This is completed within ~ 500 ns. In the absence of a validation signal at the end the 500-ns window, a fast clear is issued to the DVCS trigger and

ARS. In this way, for random level-1 triggers, the dead time is only ~ 500 ns, and the full readout is incurred only for a genuine $H(e,e'\gamma)X$ coincidence (including accidentals). Notice that only calorimeter channels belonging to 2×2 clusters above threshold were digitized and recorded for each event.

The PA was not in the trigger and was read at every HRS-calorimeter coincidence. As the virtual photon has an almost fixed direction, the approximate region of the proton detector that a DVCS proton would hit can be inferred from only the calorimeter region hit by the photon. The list of proton detector channels to be read out can then be made on the fly out of the information provided by the calorimeter trigger module. The accuracy of this prediction is dominated by a convolution of the HRS acceptance and the calorimeter energy resolution. Processes such as multiple scattering in the target and the scattering chamber can also affect the accuracy of the prediction. The lookup table of proton detector channels to read as a function of calorimeter ones was computed using the Monte Carlo simulation, which included a realistic description of all the elements of the experimental setup (see Sec. IV E). The detector inefficiency for DVCS protons owing to this online readout choice is smaller than 0.1%. Depending on the kinematic setting, only 15% to 30% of the proton detector blocks needed to be read out. This reduced the amount of data to record and therefore the acquisition dead time. Note that no threshold was set in any of the proton detector channels, so that even very low-energy protons could be detected. The communication between the calorimeter and PA crates necessary for this block selection in the proton detector was made possible by a custom multiplexer module (MUX) which allowed the calorimeter trigger module to send its data to the PA crate.

The HRS DAQ functions in the standard way for a Hall A coincidence experiment, with all HRS analog PMT signals sent through delay cables corresponding to 880 ns. Scintillator signals feed a common-start LeCroy 1875 high-resolution Time-To-digital converter (TDC). The delayed HRS signals arrive at their respective ADC and TDC inputs after the level-2 decision is made.

Even though the ARS represents a considerable advantage for this type of experiment, it has an obvious drawback: The amount of data to transfer is about a hundred times higher than a regular HRS event. If the 232 ARS channels of the E00-110 experiment were to be recorded at every event, the event size would be $232 \times 128 \times 16/8 \sim 60$ kB. Typically, only ~ 40 ARS channels were recorded at every event.

IV. DATA ANALYSIS

As mentioned before, the selection of the $ep \rightarrow ep\gamma$ final state is based on a missing-mass analysis of the $ep \rightarrow ep\gamma X$ event sample. This is made possible by the excellent momentum resolution of the Hall A HRS and the fair energy and position resolutions of our dedicated electromagnetic calorimeter. The following sections describe the selection of electron candidates from the HRS and the analysis of the calorimeter to select the final-state photon. We then focus on the final steps to ensure that our $ep \rightarrow ep\gamma$ selection is efficient and its purity close to perfect. Finally, we describe the normalization procedure, the Monte Carlo simulation, and

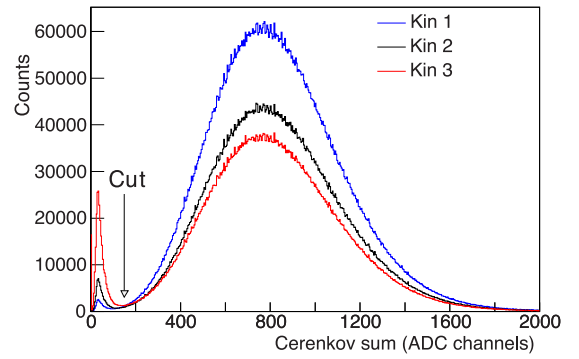


FIG. 12. (Color online) Distribution of the sum of all ten Čerenkov PMT ADC values for each kinematic setting. The cut applied to remove the one-photoelectron signal from data is also shown.

the method used to extract cross sections from our data and Monte Carlo events.

A. HRS analysis

The HRS Čerenkov detector was used for the electron identification. The number of photoelectrons detected is seven on average so that the distribution is Poissonian. Figure 12 shows the distribution of the sum of all 10 PMTs (in ADC channels). The first “peak” in the spectrum is the tail of the electronic noise in the pedestal. We remove one-photoelectron events (either thermal emission in the PMT or δ rays from pions) by applying a cut at 150 ADC channels. The one-photoelectron peak is only visible if the Čerenkov signal is removed from the trigger, and a cut is made on the pion rejector to select minimum ionizing particles (i.e., pions).

Figure 13 shows the distribution of the reaction point along the beam v_z reconstructed by the HRS. The target center relative to the Hall center was determined to be 7.8 mm downstream. A cut to avoid the contribution from the target cell wall was applied to the data: $-6.00 \text{ cm} < v_z < 7.50 \text{ cm}$.

Figure 14 shows the resolution on the vertex reconstruction as measured with a carbon multifoil target. The thickness of each foil is 1 mm, and the HRS was at 37.69° during this run.

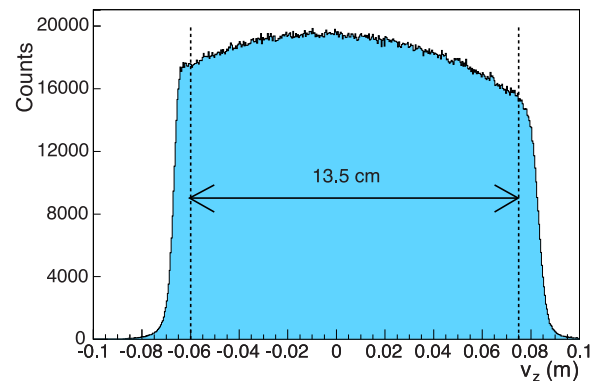


FIG. 13. (Color online) Reaction point along the beam reconstructed by the HRS. The cut on the target length applied is shown by the vertical lines. The 7.8-mm downstream shift of the target observed during the experiment is also evident.

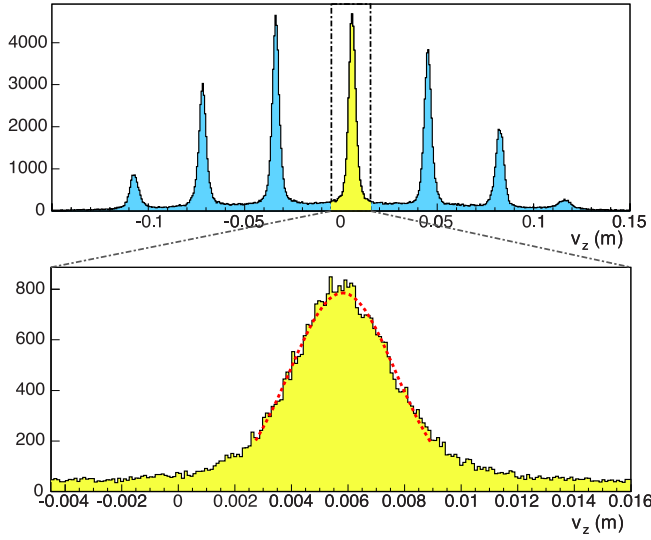


FIG. 14. (Color online) (Top) Resolution of the vertex reconstruction from a multifoil target. (Bottom) Closeup of the central foil fit, which results in a $\sigma = 1.9$ -mm resolution. The foil thickness is 1 mm and the HRS was at 37.69° during this run.

The HRS vertex resolution varies as

$$\sigma = \frac{\sigma_{90^\circ}}{\sin \theta_{\text{HRS}}}. \quad (16)$$

The σ measured at 37.69° is 1.87 mm, which means 1.2 mm at 90° (the σ introduced by the foil thickness is $(1/\sqrt{12})$ mm and can be neglected).

The HRS acceptance is a hypervolume depending on five correlated variables: x_{tg} and θ_{tg} (the position of the particle and the tangent of the angle made by its trajectory along the dispersive direction), y_{tg} and ϕ_{tg} (the position and the tangent of the angle perpendicular to the dispersive direction), and δ_{tg} (the fractional deviation of the particle momentum with respect to the central momentum of the HRS). Trajectories of higher-momentum particles have lower curvature in the dipole, and for them to fit into the spectrometer they need to have lower θ_{tg} . The dipole magnet has a trapezoidal cross section and higher-momentum particles tending to fly closer to its shorter base (high magnetic field) side, which makes the accepted range of ϕ_{tg} smaller for higher δ_{tg} . Finally, increasing y_{tg} requires decreasing ϕ_{tg} for the particle to get into the spectrometer entrance window. Making cuts independently in each of the variables to limit events to flat acceptance regions in each of them is thus very inefficient. Instead, we used an acceptance function [51], which makes it possible to place a four-dimensional cut ($x_{\text{tg}} = 0$ is assumed). This procedure is almost twice more efficient than the traditional sequential acceptance cuts. This function takes the arguments y_{tg} , θ_{tg} , ϕ_{tg} , and δ_{tg} and returns a so-called R value, which is the minimum distance (in radians) to the $(\theta_{\text{tg}}, \phi_{\text{tg}})$ solid angle acceptance region appropriate for a given value of y_{tg} and δ_{tg} . A value of 5 mrad was used to constrain a well-defined region of the HRS acceptance. The cross-section results varied by no more than 1% when increasing the R -function cut. This value was used as an estimate of the HRS acceptance systematic uncertainty.

B. Calorimeter analysis

The calorimeter analysis is done in two steps. First, the recorded ARS wave forms are analyzed to extract the time and energy information. Then an algorithm is used to aggregate the block information into photon clusters with a measured position, time, and total energy.

1. ARS wave-form analysis

All the detector channels of the electromagnetic calorimeter were equipped with ARS electronics, which made it possible to save the full wave form in a manner similar to that of a digital oscilloscope. To extract time and amplitude information from the ARS, a wave-form analysis is needed which is performed offline.

Each pulse as a function of time is described by a reference pulse multiplied by an amplitude. For an ideal event without noise, the amplitude of the pulse and its arrival time are free parameters. For any given arrival time t , the amplitude $a(t)$ which best fits the signal $\{x_i\}$ is simply given by the one which minimizes

$$\chi^2(t) = \sum_{i_{\min}}^{i_{\max}} [x_i - a(t)h_{i-t} - b(t)]^2, \quad (17)$$

where $\{h_i\}$ is the reference shape. Notice that we also fit a flat baseline $b(t)$. Reference shapes for each individual PMT are determined experimentally from data, using elastic calibration runs, where the probability of pileup is very small. To reduce the impact of accidental events, only $i_{\max} - i_{\min} = 80$ ARS samples were used in the calorimeter analysis, centered around the expected arrival time of DVCS events which, because of cable lengths, varies slightly from one channel to another. The partial derivatives of $\chi^2(t)$ with respect to $a(t)$ and $b(t)$ yield a linear set of equations to obtain the best amplitude for any given arrival time t . If the minimum value of $\chi^2(t)$ found for all the possible t is above a given analysis threshold χ_1^2 , the algorithm will fit a second pulse to the wave form by minimizing

$$\chi^2(t_1, t_2) = \sum_{i_{\min}}^{i_{\max}} [x_i - a_1(t_1, t_2)h_{i-t_1} - a_2(t_1, t_2)h_{i-t_2} - b(t_1, t_2)]^2, \quad (18)$$

for every combination of t_1 and t_2 . For every pair of t_1 and t_2 and the corresponding fitted amplitudes and baseline, a reduced χ^2 is also computed in a time window of ± 20 ns around the minimum of the pulse. The minimum reduced χ^2 found determines the amplitudes and arrival times of the pulses. Pulses were searched in a $[-20, 25]$ ns interval around the expectation arrival time of events, in steps of 1 ns. An improved time resolution is obtained by interpolating around the time that minimizes the χ^2 for any time $t = t_1, t_2$:

$$t = t(\chi_{\min}^2) + \frac{\chi_{t-1}^2 - \chi_{t+1}^2}{2(\chi_{t+1}^2 + \chi_{t-1}^2 - 2\chi_{\min}^2)}. \quad (19)$$

The threshold value χ_1^2 used for the analysis corresponded to an effective missed pulse of ~ 280 MeV for each particular calorimeter block (which translates to slightly different ARS

channel thresholds owing to the different calibration of each block). Also, if the χ^2 of a fit by a flat line b was below an equivalent energy of $\chi_0^2 \sim 40$ MeV, no pulse was fitted and the signal was discarded. Finally, if two pulses were found with a relative arrival time smaller than 4 ns, the algorithm returned the best single pulse fit because two-pulse results proved to be unstable in those cases.

The wave-form analysis of the PA ARS data used the same algorithm, but with slightly different parameters. Energy thresholds were set to $\chi_0^2 \sim 2$ MeV and $\chi_1^2 \sim 15$ MeV to best fit the much smaller recoil proton energies in the detector. Owing to the high counting rate in the detector, only 30 ARS samples were used for the fit. Also, time windows to search for pulses were set to $-20 \leq t_1, t_2 \leq 20$ ns around the expected event signal.

Overall, the wave-form analysis of ARS signals increases the energy resolution in the DVCS calorimeter by a factor of 2–3 (depending on the background level) with respect to results obtained integrating the signal in a 60-ns window. We found about 8% of events in the calorimeter with some pileup from accidentals.

2. Clustering algorithm

The algorithm used to separate clusters in the electromagnetic calorimeter is based on a cellular automaton, as described in Ref. [52], and uses only pulses arriving within a $[-3, 3]$ ns interval. This coincidence time window is more than 6 times the time resolution of the detector (~ 0.8 ns). For each cluster found, the total photon energy E is taken to be the sum over the deposited energy E_i in each of the cluster blocks,

$$E = \sum_i E_i, \quad E_i = C_i A_i, \quad (20)$$

where A_i is the signal amplitude collected in block i and C_i its calibration coefficient. The impact position x_{clus} is calculated as the sum of blocks positions x_i weighted logarithmically by the relative energy deposition in each of them [53]:

$$x_{\text{clus}} = \frac{\sum_i w_i x_i}{\sum_i w_i}, \quad (21)$$

with $w_i = \max\{0, W_0 + \ln(E_i/E)\}$.

The parameter W_0 allows a further tuning of the relative weight between blocks: As $W_0 \rightarrow \infty$ the weighting becomes uniform regardless of the energy deposited in each block, whereas small values of W_0 give a larger relative weight to blocks with large energy deposition. The value of W_0 fixes the energy threshold for blocks to be taken into account in the position determination: Blocks with a relative energy deposition less than e^{-W_0} are neglected in the calculation.

Because the calorimeter was placed at 1.1 m from the 15-cm-long target, the incidence angle of particles on the front face of the calorimeter could therefore vary by significant amounts: Corrections owing to the vertex position in the target needed to be applied. Furthermore, the electromagnetic shower does not begin at the surface of the calorimeter, but at a certain depth as shown in Fig. 8. This depth is, to first approximation, independent of the incident particle energy. Taking these two effects into account, the position x_{clus} given by Eq. (21) is

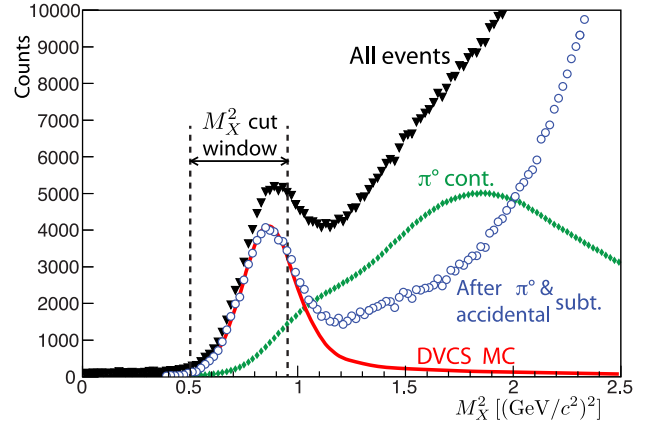


FIG. 15. (Color online) Squared missing mass M_X^2 associated with the reaction $ep \rightarrow e\gamma X$ for Kin2. Total events for Kin2 are represented as inverted black triangles, the estimated π^0 contamination is represented as green diamonds, the distribution after the subtraction of accidentals and π^0 's is shown as blue open circles. Finally, it is compared with the normalized DVCS Monte Carlo (described in Sec. IV E) shown as a red solid line. To remove unnecessary uncertainties owing to low-missing-mass-squared accidental events, we apply a cut requiring a missing-mass squared higher than $0.5 \text{ GeV}^2/c^4$ for all kinematics.

corrected by

$$x_{\text{corr}} = x_{\text{clus}} \left(1 - \frac{a}{\sqrt{L_{\text{vc}}^2 + x^2}} \right), \quad (22)$$

where L_{vc} is the distance from the vertex to the calorimeter and a is the distance of the electromagnetic shower centroid to the calorimeter front face, taken along the direction of its propagation. The algorithm depends on two parameters W_0 and a , which have been optimized to $W_0 = 4.3$ and $a = 7$ cm by Monte Carlo simulation and real data from the elastic runs, where a 2-mm position resolution (σ) at 1.1 m and 4.2 GeV was measured, compatible with the one obtained from Monte Carlo simulations. Position resolution when two partially overlapping clusters are present is slightly worse than in the case of a single cluster: Simulated data show in this case a 4-mm spatial resolution.

C. Event selection

The $ep \rightarrow ep\gamma$ events are selected among the calorimeter one-cluster events. A software energy threshold of 1.1 GeV was applied to calorimeter clusters, slightly above the hardware threshold of ~ 1 GeV. Fiducial cuts were used to discard events hitting blocks at the edges of the calorimeter. Figure 15 shows the $ep \rightarrow e\gamma X$ missing-mass-squared distribution of the data. Accidental coincidences were estimated by analyzing events in $[-11, -5]$ - and $[5, 11]$ -ns time windows, the same width as the coincidence clustering window but shifted in time (see Fig. 16). The use of two intervals to estimate the accidental sample reduces its statistical uncertainty.

Neutral pion decays with only one photon reaching the calorimeter form an important source of background to the DVCS sample. This background is subtracted using π^0 events where the two photons are detected in the calorimeter. For each

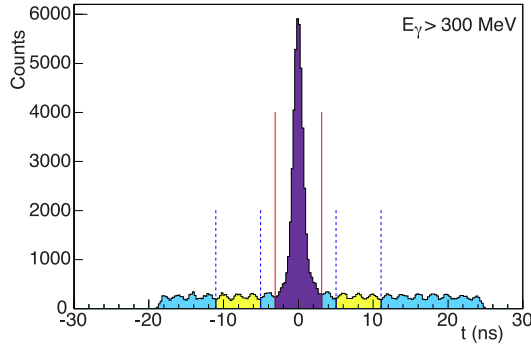


FIG. 16. (Color online) Time spectrum of blocks with $E > 300$ MeV in the Kin3 setting. It shows the 45-ns time window of the wave-form analysis. The 2-ns Continuous electron beam accelerator facility (CEBAF) beam structure is clearly visible. The coincidence $[-3, 3]$ -ns window used for clustering is shown by the solid line. Dashed lines show windows used for the HRS-calorimeter accidental subtraction.

detected π^0 , its isotropic decay in its center-of-mass frame is simulated $n_{\text{dec}} = 5000$ times, and the decay photons are projected onto the calorimeter acceptance. This simulation allows us to make a statistical subtraction of the π^0 background to the DVCS signal, including both exclusive and inclusive π^0 events. The subtraction is obtained from the simulated decays in which one of the photons is emitted close to the pion momentum direction. Note that this background-subtraction scheme could not be applied in Kin1 as the energy of π^0 decay photons is too close to the calorimeter threshold to ensure an efficient background subtraction.

A self-consistency check of the π^0 -subtraction method was performed using a Monte Carlo. π^0 's were generated over the acceptance and classified into two categories: the one-photon-detected and the two-photon-detected events. After applying the π^0 -subtraction method described above to the two-photon category, we obtained a number of one-photon events and compared it to the one-photon-detected category. The result is presented in Fig. 17. This efficiency ratio is close to 1 except in the corners or close to the edges. Therefore, we applied a geometrical cut on the cluster in the data and the Monte Carlo simulation, also shown in the figure.

Figure 18 (top) shows the total distribution of events in a Kin3 bin along with the accidentals and π^0 contributions. Accidental events reside close to $\phi = 0^\circ$, which corresponds to the beamline side of the calorimeter, where higher single rates are observed. The contribution of π^0 events, however, is larger around $\phi = 180^\circ$. This feature remains true for most experimental bins. The bottom plot of Fig. 18 shows the helicity-dependent distribution of events for the same bin. The contribution of accidental events cancels in this difference of counts, as they are essentially helicity independent. The fact that the same feature is observed for π^0 's is not trivial. As it turns out, exclusive π^0 events are known to have a small beam-spin asymmetry at Jefferson Lab kinematics [54], and the π^0 events we subtract may include semi-inclusive π^0 's that have an even smaller asymmetry [55]. We have checked that in all our experimental bins the contributions of both accidental and π^0 events to the difference of counts for opposite helicities

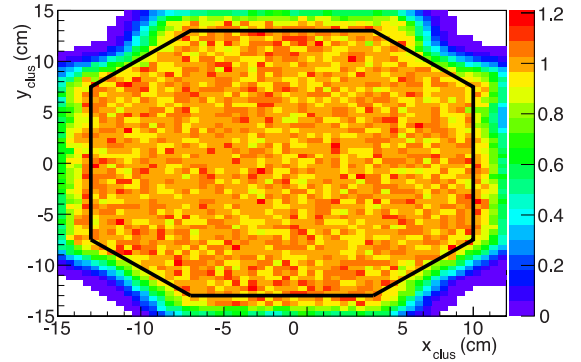


FIG. 17. (Color online) Estimated efficiency (color scale) of the π^0 subtraction using a Monte Carlo simulation as a function of the photon cluster position in the calorimeter (x_{clus} and y_{clus}). An octagonal cut on the front face of the calorimeter applied to all events was used to ascertain a nearly full efficiency of the π^0 subtraction; it is shown as a black line. The general shape and size of the cut can be understood from the size of the front face and the width of the shower profile (Fig. 8).

are compatible with zero within statistical uncertainties. We have therefore decided to not subtract these contributions in the computation of the helicity-dependent cross sections. In this way, even though we were unable to evaluate the unpolarized

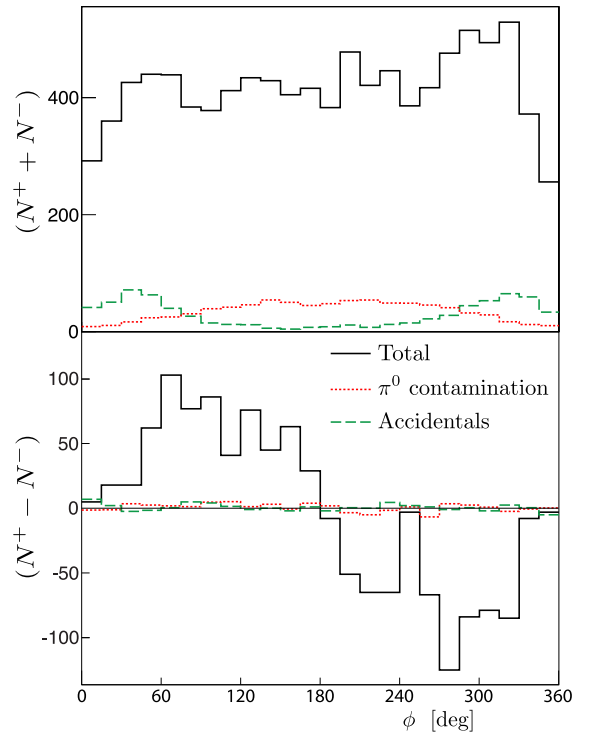


FIG. 18. (Color online) Total counts (top) and difference of counts for opposite helicities (bottom) as a function of ϕ for the Kin3 bin $x_B = 0.37$, $Q^2 = 2.36$ GeV², and $-t = 0.32$ GeV². The solid curve histogram in black corresponds to the distribution of events after all analysis cuts have been applied. The estimated remaining contribution corresponding to accidental events is shown as a dashed green histogram. The estimated π^0 contribution is represented as a red dotted histogram.

TABLE II. Summary of the $ep \rightarrow ep\gamma$ selection cuts.

HRS	
Track multiplicity	$N_{\text{tr}} = 1$
R function	$R \text{ value} > 0.005$
Čerenkov	$\text{ADC}_{\text{sum}} > 150$
Vertex	$-6.0 \text{ cm} < v_z < 7.5 \text{ cm}$
Calorimeter	
Cluster multiplicity	$N_{\text{clus}} = 1$
Energy	$E_{\text{clus}} > 1.1 \text{ GeV}$
Position	$-13 < x_{\text{clus}} < 10$
(in cm)	$ y_{\text{clus}} < 13$
	$y_{\text{clus}} < 0.92 \times (x_{\text{clus}} + 13) + 7.5$
	$y_{\text{clus}} < -0.92 \times (x_{\text{clus}} - 4) + 13$
	$y_{\text{clus}} > -0.92 \times (x_{\text{clus}} + 13) - 7.5$
	$y_{\text{clus}} > 0.92 \times (x_{\text{clus}} - 4) - 13$
Exclusivity	
All settings	$M_X^2 > 0.5 \text{ GeV}^2/c^4$
Kin1-2	$M_X^2 < 0.95 \text{ GeV}^2/c^4$
Kin3	$M_X^2 < 1.09 \text{ GeV}^2/c^4$

cross section for Kin1, we did succeed in evaluating the helicity-dependent cross section.

After the π^0 subtraction, the only remaining channels (other than exclusive DVCS) are kinematically constrained to $M_X^2 > (M + m_\pi)^2$. However, resolution effects may cause these channels to contribute below the M_X^2 cut. This contamination was strongly suppressed by the tight missing-mass-squared cut and will be evaluated in Sec. VI A.

All selection cuts in this analysis are summarized in Table II.

D. Efficiencies and normalization

The efficiency of the scintillators that were used for the electron trigger was monitored during dedicated runs along the experiment. An efficiency of 99.95% was measured over the duration of the experiment. The efficiency of the Čerenkov counter used to discriminate electrons from negative pions was measured to be 99%. The purity of the electron sample was estimated at 98.8%, further enhanced by the missing-mass-squared cut on $H(e, e'\gamma)X$. We estimated that a maximum of 0.5% of electrons may still be misidentified and consider this value as the systematic uncertainty on the electron identification.

The dead time associated with the DAQ is determined by comparing the number of pulses from two clocks running both at 62.5 MHz: One is always running; the other one is vetoed when the DAQ is busy. The integrated luminosity is corrected for the dead time on a run-by-run basis, with an associated systematic uncertainty estimated to be 1% for Hall A [43]. The average dead time varied between 14% and 40% depending on the kinematic setting.

When multiple tracks were detected in the HRS, events were discarded owing to the unreliability of the reconstruction. These events represent between 7% and 10% of the total statistics, depending on the kinematic setting. However, most of these multitrack events show a very low energy in the pion rejector, indicating that most of them contain secondary

TABLE III. Summary of efficiency factors to be applied multiplicatively to experimental yields. The multicluster correction depends on the kinematic setting and the experimental bin; only the average value is listed in this table.

Source	Correction to yield
Čerenkov	1.01
Multitrack	1.02
Multicluster	1.02
Total	1.05

tracks from showers generated in the exit region of the Q3 magnet or pions that trigger the DAQ with δ rays. The number of multitrack events corresponding to good electrons was estimated by requiring a $\sim 1.7 \text{ GeV}$ minimum energy deposited in the pion rejector. The number of good electron events with two or more tracks in the VDCs amounts to only $\sim 2\%$ of the total number of events for all kinematics. The 0.5% associated systematic uncertainty has been evaluated by changing the energy threshold of the pion rejector.

Similarly, multicluster events in the DVCS calorimeter are discarded from the analysis. They represent from 1% to 5% of the statistics, depending on the kinematic setting. To apply a correction for this, two-cluster events were thoroughly studied. All selection cuts were applied to each of the two photons, and a correction was computed, based on the number of events that remain after the cuts are applied. Two-cluster events with an invariant mass between 100 and 170 MeV/c^2 were not included in the sample used to calculate this correction as they are mostly decay photons from neutral pions. In rare cases where both photons fulfilled all selection cuts, they contribute to the correction with a relative weight based on the accidental rate measured in their respective kinematical bin. We attribute a systematic uncertainty to the multicluster correction based on the number of events with more than two clusters in the calorimeter, which were not considered in our analysis. This number represents 7% of the two-cluster events and therefore an associated systematic uncertainty of less than 0.4% overall.

Table III gives a summary of efficiency factors applied to experimental yields.

E. Monte Carlo simulation

The experimental setup was implemented in a GEANT4 Monte Carlo simulation. The HRS geometrical acceptance was modeled by a collimator window placed at the entrance of the spectrometer. Its acceptance was simulated by applying the same R -value cut that is used for the experimental data ($R \text{ value} > 5 \text{ mrad}$). The PbF_2 DVCS electromagnetic calorimeter geometry was implemented in detail, including all active and passive materials of the experimental setup. Only the energy deposit of particles in the calorimeter is digitized in our simulation, as the generation and tracking of Čerenkov photons requires unrealistic simulation times and proves to be unreliable owing to the difficulty to define optical surfaces accurately. Detector offsets were adjusted following geometrical surveys of the experimental equipment.

Events were generated following a flat distribution in Q^2 , x_B , t , ϕ , and ϕ_e . In addition, the z position of the vertex was randomized within the full length of the target cell. The ranges of Q^2 and x_B are defined by the angular and momentum acceptance of the HRS. The hadronic part of the reaction ($\gamma^* p \rightarrow \gamma p$) is computed in its center-of-mass and final-state particles are then boosted to the laboratory frame. The generation range in t is kinematically constrained event by event by the values of Q^2 and x_B . The angle ϕ is then generated uniformly inside 2π . Finally, all particles in the final state are rotated around the beam axis by ϕ_e , chosen large enough to cover the full vertical acceptance of the HRS for all positions along the length of the target. Each event is then weighted by a phase-space factor $\Delta\Gamma = \Delta x_B \Delta Q^2 \Delta\phi \Delta t(x_B, Q^2) \Delta\phi_e / N_{\text{gen}}$, where N_{gen} is the total number of generated events.

Because of bremsstrahlung energy losses and resolution effects, the missing-mass-squared cut removes a significant fraction of exclusive events. This is corrected through the Monte Carlo simulation by applying the same cut in the simulated data. However, the experimental resolution of the calorimeter and the imperfections of the calibration procedure have to be reproduced by the Monte Carlo simulation. To achieve this, the detector is divided into 49 partially overlapping areas. From the photon four-momentum in the Monte Carlo simulation the following smearing transformation is applied:

$$\begin{pmatrix} q_x \\ q_y \\ q_z \\ E \end{pmatrix} \mapsto \text{gauss}(\mu, \sigma) \times \begin{pmatrix} q_x \\ q_y \\ q_z \\ E \end{pmatrix}. \quad (23)$$

In each area, the parameters μ and σ are fitted to best match the M_X^2 spectra of the simulated and the experimental data in the exclusive region. The final values of μ and σ used to smear the simulated events are interpolated event-by-event according to the impact point of the photon in the calorimeter. Figure 19 shows the resulting values of μ and σ for Kin3, interpolated across the calorimeter surface and within the fiducial region defined by the octagonal cut shown in Fig. 17. The parameter μ corrects imperfections in the estimation of the energy in the Monte Carlo simulation compared to the data. The parameter σ accounts for different resolutions on the different areas of the calorimeter. The latter can be attributed to either different levels of background or different quality of the crystals. Indeed, a worse energy resolution is observed at small angles with respect to the electron beam (positive x_{clus}). Also, we notice areas of fluctuating resolution corresponding to varying quality of the PbF₂ crystals.

The missing-mass-squared cut to ensure exclusivity is chosen as the value where the Monte Carlo and the data spectra start to differ owing to contamination by nonexclusive events. This leads to two different values of missing-mass-squared cut: 0.95 GeV²/c⁴ for Kin1 and Kin2 and 1.09 GeV²/c⁴ for Kin3. A study of the systematic uncertainty on the exclusivity is presented in Sec. VIA.

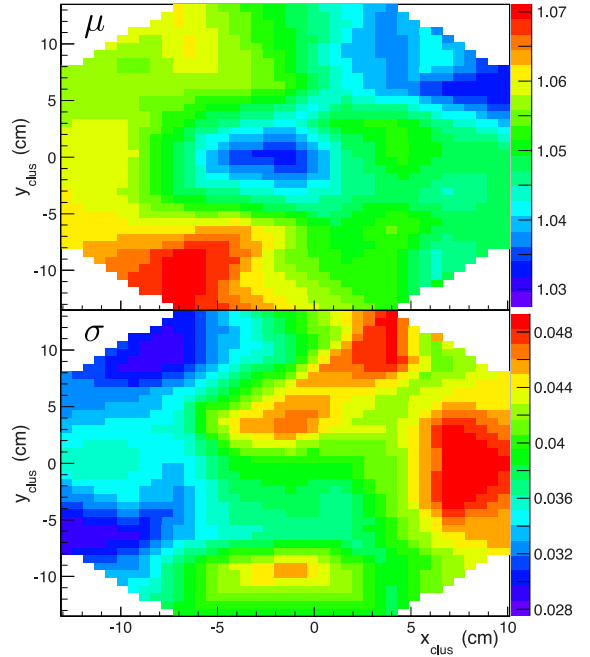


FIG. 19. (Color online) Mean μ (top) and standard deviation σ (bottom) of the Gaussian distribution used to smear the simulated photon data of Kin3 viewed on the calorimeter surface y_{clus} vs x_{clus} (beam on the right side).

F. Cross section

To derive differential cross sections from the measured data, the solid angle (or acceptance) Ω of the detection apparatus has to be accurately known. In the expression of the photon electroproduction cross section, CFF combinations $\mathcal{F}(Q^2, x_B, t)$ appear to be multiplied by different kinematical factors $\Gamma(Q^2, x_B, t, \phi)$, which also vary within the bin width. In addition, BH itself is a rapidly varying cross section, especially as a function of ϕ , x_B , and t . Because all the kinematic dependencies besides the intrinsic CFF ones are known, we decided to use a method which directly extracts the CFF from data by disentangling all effects in a combined data-Monte Carlo fit. The general principle is the following: We form a χ^2 by comparing the experimental yield with the Monte Carlo yield in each bin, for which the cross section is parametrized by CFF combinations. We then minimize the χ^2 to extract the CFF combinations for which the Monte Carlo best describes the data. This method has the additional advantage of automatically handling bin migration effects that may occur. The extraction method is formally described in the following.

Let

$$\mathbf{x}_v = \begin{pmatrix} E_b \\ x_B \\ Q^2 \\ t \\ \phi \\ \phi_e \end{pmatrix}_v \quad (24)$$

represent the kinematic variable vector at the vertex in the simulation. The incident electron energy E_b is included to

treat the radiative tail. Let

$$\mathbf{x}_e = \begin{pmatrix} E_b \\ x_B \\ Q^2 \\ t \\ \phi \\ \phi_e \end{pmatrix}_e \quad (25)$$

represent the reconstructed event variables. In the Monte Carlo simulation, we define the mapping

$$K(\mathbf{x}_e|\mathbf{x}_v) \quad (26)$$

as the conditional probability distribution to observe an event at the kinematic point \mathbf{x}_e starting from vertex point \mathbf{x}_v . The experimental acceptances, intrinsic detector efficiencies and resolutions, and real-radiative effects are included in $K(\mathbf{x}_e|\mathbf{x}_v)$. This conditional probability, which we compute using the Monte Carlo simulation, takes into account the potential bin migration owing to detector resolutions and radiative effects. The binning vector

$$\mathbf{i}_e = \begin{pmatrix} i_{x_B} \\ i_{Q^2} \\ i_t \\ i_\phi \end{pmatrix}_e \quad (27)$$

labels a set of bins in the corresponding event kinematics, after integration over ϕ_e because unpolarized target observables depend on only one azimuthal angle ϕ . The binning vector

$$\mathbf{j}_v = \begin{pmatrix} j_{x_B} \\ j_{Q^2} \\ j_t \end{pmatrix}_v \quad (28)$$

labels a similar set of bins in the vertex variables. The helicity-dependent and helicity-independent cross sections can be written as a sum of several harmonic contributions as described by Eqs. (4)–(6),

$$\sigma(\mathbf{x}_v) = \sum_{\Lambda} \Gamma^{\Lambda}(\mathbf{x}_v) X_{\mathbf{j}_v}^{\Lambda}, \quad (29)$$

where $\Gamma^{\Lambda}(\mathbf{x}_v)$ represent some kinematical factors and $X_{\mathbf{j}_v}^{\Lambda}$ are some combinations of CFFs that are unknown and that parametrize the DVCS cross section. Notice that, as shown by Eq. (28), the variable ϕ is not binned at the vertex. This is because the full ϕ dependence of the cross section is known and contained in the kinematical factors $\Gamma^{\Lambda}(\mathbf{x}_v)$. Thus, the unknowns $X_{\mathbf{j}_v}^{\Lambda}$ are independent of ϕ . The fact that the total number of bins in the reconstructed event variables is significantly higher than the number of bins in the vertex variables is precisely what makes the fit described below possible.

The number of counts per bin at the vertex is

$$\begin{aligned} N^{\text{MC}}(\mathbf{j}_v) &= \mathcal{L} \int_{\mathbf{x}_e \in \text{bin}(\mathbf{j}_v)} \sum_{\Lambda} \Gamma^{\Lambda}(\mathbf{x}_v) X_{\mathbf{j}_v}^{\Lambda} d\mathbf{x}_v \\ &= \mathcal{L} \sum_{\Lambda} X_{\mathbf{j}_v}^{\Lambda} \int_{\mathbf{x}_e \in \text{bin}(\mathbf{j}_v)} \Gamma^{\Lambda}(\mathbf{x}_v) d\mathbf{x}_v, \end{aligned} \quad (30)$$

where \mathcal{L} is the integrated luminosity. In the experimental bin \mathbf{i}_e , the yield is

$$\begin{aligned} N^{\text{MC}}(\mathbf{i}_e) &= \int_{\mathbf{x}_e \in \text{bin}(\mathbf{i}_e)} d\mathbf{x}_e \sum_{\mathbf{j}_v} N^{\text{MC}}(\mathbf{j}_v) K(\mathbf{x}_e|\mathbf{x}_v) \\ &= \mathcal{L} \sum_{\mathbf{j}_v} \sum_{\Lambda} X_{\mathbf{j}_v}^{\Lambda} \int_{\mathbf{x}_e \in \text{bin}(\mathbf{i}_e)} d\mathbf{x}_e \\ &\quad \times \int_{\mathbf{x}_v \in \text{bin}(\mathbf{j}_v)} d\mathbf{x}_v \Gamma^{\Lambda}(\mathbf{x}_v) K(\mathbf{x}_e|\mathbf{x}_v). \end{aligned} \quad (31)$$

We define a bin-mapping function:

$$K_{\mathbf{i}_e, \mathbf{j}_v}^{\Lambda} = \int_{\mathbf{x}_e \in \text{bin}(\mathbf{i}_e)} \int_{\mathbf{x}_v \in \text{bin}(\mathbf{j}_v)} d\mathbf{x}_e d\mathbf{x}_v K(\mathbf{x}_e|\mathbf{x}_v) \Gamma^{\Lambda}(\mathbf{x}_v). \quad (32)$$

This function is basically the solid angle weighted by the kinematic factors $\Gamma^{\Lambda}(\mathbf{x}_v)$, where the effects of bin migration are taken into account through the function $K(\mathbf{x}_e|\mathbf{x}_v)$. The number of counts per bin can thus be written as

$$N^{\text{MC}}(\mathbf{i}_e) = \mathcal{L} \sum_{\mathbf{j}_v, \Lambda} K_{\mathbf{i}_e, \mathbf{j}_v}^{\Lambda} X_{\mathbf{j}_v}^{\Lambda}. \quad (33)$$

Note the summation over all \mathbf{j}_v . All bins at the vertex might contribute to a given experimental bin \mathbf{i}_e , with a certain probability or weight given by the function $K_{\mathbf{i}_e, \mathbf{j}_v}^{\Lambda}$, computed in the simulation. We construct a χ^2 which we minimize to extract the $\mathbf{X}_{\mathbf{j}_v}$,

$$\chi^2 = \sum_{\mathbf{i}_e} \frac{[N^{\text{exp}}(\mathbf{i}_e) - N^{\text{MC}}(\mathbf{i}_e)]^2}{[\delta^{\text{exp}}(\mathbf{i}_e)]^2}, \quad (34)$$

where $\delta^{\text{exp}}(\mathbf{i}_e)$ are the experimental statistical uncertainties in each bin. The Monte Carlo statistical uncertainties are omitted in this expression as they are negligible with respect to the experimental statistical uncertainties.

The coefficients $\bar{\mathbf{X}}_{\mathbf{j}_v}$ are defined as the values of $\mathbf{X}_{\mathbf{j}_v}$ that minimize χ^2 :

$$0 = - \frac{1}{2} \frac{\partial \chi^2}{\partial X_{\mathbf{j}_v}^{\Lambda}} \bigg|_{\bar{\mathbf{X}}_{\mathbf{j}_v}}, \quad (35)$$

$$0 = \sum_{\mathbf{j}'_v, \Lambda'} \alpha_{\mathbf{j}_v, \mathbf{j}'_v}^{\Lambda, \Lambda'} \bar{X}_{\mathbf{j}'_v}^{\Lambda'} - \beta_{\mathbf{j}_v}^{\Lambda} \quad \forall \mathbf{j}_v, \Lambda.$$

The linear system is defined by

$$\alpha_{\mathbf{j}_v, \mathbf{j}'_v}^{\Lambda, \Lambda'} = \sum_{\mathbf{i}_e} \mathcal{L}^2 \frac{K_{\mathbf{i}_e, \mathbf{j}_v}^{\Lambda} K_{\mathbf{i}_e, \mathbf{j}'_v}^{\Lambda'}}{[\delta^{\text{exp}}(\mathbf{i}_e)]^2}, \quad (36)$$

$$\beta_{\mathbf{j}_v}^{\Lambda} = \sum_{\mathbf{i}_e} \mathcal{L} \frac{N^{\text{exp}}(\mathbf{i}_e) K_{\mathbf{i}_e, \mathbf{j}_v}^{\Lambda}}{[\delta^{\text{exp}}(\mathbf{i}_e)]^2}. \quad (37)$$

The fit parameters are

$$\bar{X}_{\mathbf{j}_v}^{\Lambda} = \sum_{\mathbf{j}'_v, \Lambda'} [\alpha^{-1}]_{\mathbf{j}_v, \mathbf{j}'_v}^{\Lambda, \Lambda'} \beta_{\mathbf{j}'_v}^{\Lambda'}. \quad (38)$$

The covariance matrix of the fitted parameters is

$$V_{\mathbf{j}_v, \mathbf{j}'_v}^{\Lambda, \Lambda'} = [\alpha^{-1}]_{\mathbf{j}_v, \mathbf{j}'_v}^{\Lambda, \Lambda'}. \quad (39)$$

Finally, the cross-section values (and associated error bars) at the point \bar{x}_{i_e} are obtained as

$$\frac{d^4\sigma(\bar{x}_{i_e})}{dx_B dQ^2 dt d\phi} = \frac{d^4\sigma_{j_v}^{\text{Fit}}(\bar{x}_{i_e})}{dx_B dQ^2 dt d\phi} \cdot \frac{N^{\text{exp}}(\mathbf{i}_e, \mathbf{j}_v)}{N^{\text{MC}}(\mathbf{i}_e, \mathbf{j}_v)}, \quad (40)$$

where

$$\frac{d^4\sigma_{j_v}^{\text{Fit}}(\bar{x}_{i_e})}{dx_B dQ^2 dt d\phi} = \sum_{\Lambda} \Gamma^{\Lambda}(\bar{x}_{i_e}) \bar{X}_{j_v}^{\Lambda} \quad (41)$$

is defined by the fit parameters of the bin \mathbf{j}_v , which has the same bin limits in x_B , Q^2 , and t as the experimental bin \mathbf{i}_e . The number of counts $N^{\text{MC}}(\mathbf{i}_e, \mathbf{j}_v)$ and $N^{\text{exp}}(\mathbf{i}_e, \mathbf{j}_v)$ corrected from bin migration are given by

$$N^{\text{MC}}(\mathbf{i}_e, \mathbf{j}_v) = \mathcal{L} \sum_{\Lambda} K_{i_e, j_v}^{\Lambda} X_{j_v}^{\Lambda}, \quad (42)$$

$$N^{\text{exp}}(\mathbf{i}_e, \mathbf{j}_v) = N^{\text{exp}}(\mathbf{i}_e) - \mathcal{L} \sum_{\Lambda} \sum_{j'_v \neq j_v} K_{i_e, j'_v}^{\Lambda} X_{j'_v}^{\Lambda}. \quad (43)$$

Note that we study the harmonic coefficients of the cross section, which are the sum of $(c, s)_n^T$ and $(c, s)_n^{\text{DVCS}}$, themselves involving several combinations of twist-2 and twist-3 CFFs. The ϕ dependence is therefore not enough to separate all linear-bilinear combinations of CFFs. The ϕ dependence of the cross section can thus be properly described by different choices of free parameters.

In this analysis, we chose to parametrize the DVCS helicity-independent cross section by the three following combinations of effective CFFs: $\mathcal{C}^{\text{DVCS}}(\mathcal{F}, \mathcal{F}^*)$ [Eq. (7)], $\text{Re}[\mathcal{C}^T(\mathcal{F})]$ [Eq. (9)], and $\text{Re}[\mathcal{C}^T(\mathcal{F}_{\text{eff}})]$ [Eq. (11)]. The helicity-dependent cross section is fitted using the $\text{Im}[\mathcal{C}^T(\mathcal{F})]$ and $\text{Im}[\mathcal{C}^T(\mathcal{F}_{\text{eff}})]$. For the helicity-independent cross section

- (i) the $\mathcal{C}^{\text{DVCS}}(\mathcal{F}, \mathcal{F}^*)$ is the twist-2 DVCS² contribution (it corresponds to a constant term in the cross section);
- (ii) the $\text{Re}[\mathcal{C}^T(\mathcal{F})]$ twist-2 coefficient contributes mostly to the $\cos \phi$ modulation of the cross section;
- (iii) the $\text{Re}[\mathcal{C}^T(\mathcal{F}_{\text{eff}})]$ twist-3 coefficient contributes mostly to the $\cos 2\phi$ modulation of the cross section.

For the helicity-dependent cross section

- (i) the $\text{Im}[\mathcal{C}^T(\mathcal{F})]$ twist-2 coefficient contributes mostly to the $\sin \phi$ modulation of the cross section;
- (ii) the $\text{Im}[\mathcal{C}^T(\mathcal{F}_{\text{eff}})]$ twist-3 coefficient contributes mostly to the $\sin 2\phi$ modulation of the cross section.

For both observables, other higher-twist contributions are kinematically suppressed and therefore neglected. While this is the most physical choice of parameters, any other choice that provides a good fit ($\chi^2/\text{DOF} \sim 1$) to the ϕ dependence of the number of counts is an equally valid choice as far as the cross-section extraction is concerned. The fitted parameters, though, would have a less straightforward physics interpretation. We have tested the stability of our cross-section results against a

TABLE IV. Helicity-correlated charge (Q_{\pm}), total charge ($Q = Q_+ + Q_-$), and charge asymmetry $Q_{\text{asy}} = (Q_+ - Q_-)/Q$ for the three kinematics settings. The last column shows the integrated luminosity including events for which the helicity bit is undefined. In all cases, the charge and the luminosity have been corrected for the dead time.

Kin	Q_+ (C)	Q_- (C)	Q (C)	Q_{asy} (10^{-3})	\mathcal{L} (fb ⁻¹)
1	0.3732	0.3733	0.7464	-0.1	3059
2	0.4057	0.4064	0.8121	-0.7	3328
3	0.6913	0.6937	1.385	-2.4	5676

different choice of free parameters and results are discussed in Sec. VIB.

G. Global normalization

In the previous section, we defined \mathcal{L} as the integrated luminosity. It is computed from the average total charge Q recorded by the BCMs as

$$\int \frac{d\mathcal{L}}{dt} dt = \frac{Q}{e} \frac{N_A \rho l}{A_H}, \quad (44)$$

where $e = 1.602 \times 10^{-19}$ C is the electron charge, $A_H = 1.0079$ g/mol is the atomic mass of H, and $N_A = 6.022 \times 10^{23}$ mol⁻¹ is Avogadro's number. The LH₂ target length was $l = 15$ cm and was operated at 19 K and a pressure of 25 psi, which gives a density of $\rho = 0.07229$ g/cm³. Table IV shows the integrated luminosity (corrected by the acquisition dead time) recorded for each of the kinematic settings.

V. RADIATIVE CORRECTIONS

The diagrams of Fig. 1 only include the lowest-order QED amplitude for the DVCS process. The experimental cross section necessarily includes higher-order QED processes. Radiative corrections to the $ep \rightarrow ep\gamma$ reaction have been studied in several papers [56–59]. In this analysis we follow the approach of Ref. [56].

In this analysis we fit a model cross section to the experimental yield, bin by bin. We separate the radiative corrections into terms that are dependent on the missing-mass-squared M_X^2 cut we impose on the $H(e, e'\gamma)X$ spectra and terms that are independent of this cut. The external radiative effects on the incident electron and internal real-radiative effects at the vertex are treated in the equivalent radiator approximation [60,61]. Prescattering radiation is modeled by generating an event-by-event energy loss ΔE_{in} of the incident electron (E_b) following a distribution ($b \simeq 4/3$),

$$I_{\text{in}}(E_b, \Delta E_{\text{in}}, t_{\text{in}}) = \frac{bt_{\text{in}} + \delta_S/2}{\Delta E_{\text{in}}} \left[\frac{\Delta E_{\text{in}}}{E_b} \right]^{bt_{\text{in}} + \delta_S/2}, \quad (45)$$

with

$$\delta_S = \frac{2\alpha}{\pi} \left[\ln \frac{Q^2}{m_e^2} - 1 \right], \quad (46)$$

where t_{in} is the event-by-event target thickness (in radiation lengths) traversed by the electron before the scattering vertex. The Schwinger term δ_S models the internal prescattering radiation. The scattered energy at the vertex is $E'_v = E_b - \Delta E_{\text{in}} - Q^2/(2M_p x_B)$. Internal postscattering radiation is modeled by a similar distribution in the postscattering radiated energy ΔE_{out} :

$$I_{\text{out}} = \frac{\delta_S/2}{\Delta E_{\text{out}}} \left[\frac{\Delta E_{\text{out}}}{E'_v} \right]^{\delta_S/2}. \quad (47)$$

These radiative effects are treated within the peaking approximation. External postscattering radiation by the scattered electron is evaluated with the Monte Carlo simulation by transporting the electron to the entrance of the spectrometer. Kinematic shifts (e.g., in either the norm or the direction of \vec{q}) from external and internal radiations are fully included in the simulation and thereby unfolded from the extracted cross sections.

In addition to these radiative effects incorporated into the Monte Carlo simulation, we correct the data for internal virtual radiation as well as the cutoff independent effect of unresolvable soft real radiation, given by Eqs. (58)–(62) of [56]. The virtual corrections to the VCS amplitude are model independent in the sense that they do not depend on the dynamics of the $\gamma^* p \rightarrow \gamma p$ process. These corrections (vacuum polarization and vertex renormalization) are essentially equivalent to the corrections to elastic ep scattering, with suitable adjustment to the kinematics. However, the vacuum polarization and vertex corrections to the BH amplitude differ by several percent relative to the VCS corrections, and the BH amplitude also has self-energy corrections to the virtual electron propagators. We calculate separately the radiative corrections to the helicity-independent and helicity-dependent cross sections based on a code derived from Ref. [56] which includes the leading-twist DVCS amplitude with a fully factorized GPD ansatz [62,63]. The correction factors vary by less than 0.5% over ϕ and by $\approx 1\%$ over the $[x_B, Q^2]$ acceptance of each kinematic setting. We assign a 2% systematic uncertainty to the combined real- and virtual-radiative corrections. This is based on the variation of the correction over the acceptance, ambiguities over whether or not to exponentiate the correction, and the model-dependence of the relative contributions of the $|\mathcal{T}^{\text{BH}}|^2$, interference, and $|\mathcal{T}^{\text{DVCS}}|^2$ terms in the unpolarized cross sections. Over our five kinematic settings, the average corrections varied by less than 0.5%. Because this is less than the uncertainty of the correction, we apply the following global corrections to all cross-section bins [64]:

$$\begin{aligned} d^4\sigma^{\text{Born}} &= (0.948 \pm 0.02) d^4\sigma^{\text{exp}}, \\ \Delta^4\sigma^{\text{Born}} &= (0.973 \pm 0.02) \Delta^4\sigma^{\text{exp}}. \end{aligned} \quad (48)$$

VI. SYSTEMATIC UNCERTAINTIES

Systematic uncertainties are divided into uncorrelated (or point-to-point) and correlated (or normalization) uncertainties. The largest source of uncorrelated error in this experiment was associated with the missing-mass-squared cut. The correlated

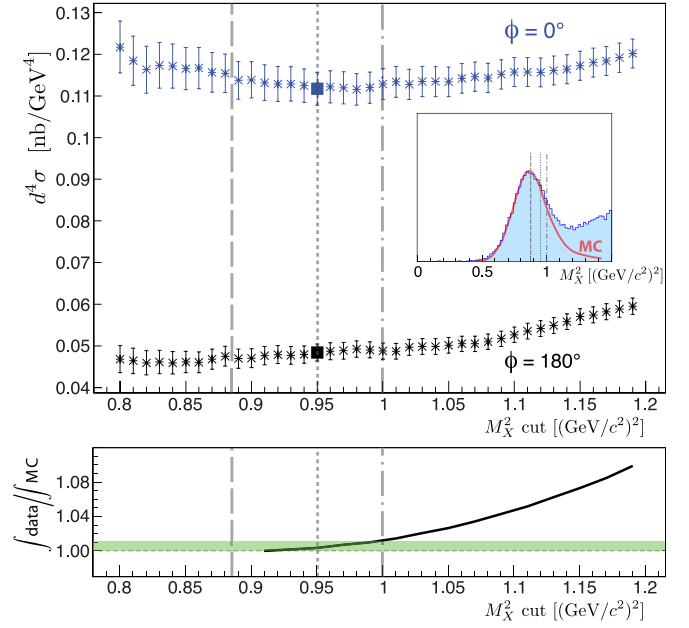


FIG. 20. (Color online) (Top) Variation of the $ep \rightarrow ep\gamma$ cross section for Kin2, $-t = 0.17 \text{ GeV}^2$, as a function of the missing-mass-squared cut, for $\phi = 0^\circ$ (upper blue points) and $\phi = 180^\circ$ (lower black points). The dotted vertical line corresponds to the nominal cut. The systematic uncertainties are evaluated bin by bin in ϕ and t for each kinematic setting by studying the variation of the cross section between the nominal and the lower missing-mass-squared cut (dashed line). The inset represents the same cuts on the missing-mass plot, along with the normalized Monte Carlo distribution. (Bottom) Ratio of the running integrals of the experimental and Monte Carlo missing-mass spectra as a function of the upper limit on the squared missing mass.

uncertainties have been described before and a summary table is shown in this section.

A. Missing-mass-squared cut

Two systematic effects are associated with the missing-mass-squared cut. The first comes from semi-inclusive events contaminating our sample. These events have larger missing-mass-squared values induced by extra missing particles. Indeed, even if the cut is supposed to keep this contamination minimal, a small fraction of such events may remain below the missing-mass-squared cut. To evaluate an upper value for this systematic uncertainty, we examined the ratio of the integrals of the experimental and Monte Carlo missing-mass-squared spectra. As seen in Fig. 20, this ratio increases significantly with the missing-mass-squared cut, which is expected because the Monte Carlo only contains exclusive events. By varying the cut from the nominal value $0.95 \text{ GeV}^2/c^4$ up to $1 \text{ GeV}^2/c^4$, the observed contamination remains smaller than 1% (green band), which we took as the systematic uncertainty on the cross section.

The second systematic effect induced by the missing-mass-squared cut arises from a mismatch on the position and shape of the missing-mass-squared peaks between data and Monte Carlo. This is attributable to our limited ability to reproduce

perfectly the response of our calorimeter. The effect of this mismatch increases as the missing-mass-squared cut decreases and is maximal around the maximum of the distribution. We estimate the corresponding error by looking at the variation of the cross section between the nominal cut and a lower cut value. This lower bound is chosen such that the loss of statistics is 15%, ensuring that the observed variations are not statistical in nature. The systematic uncertainty is evaluated for each (t, ϕ) bin of each kinematic setting and may reach up to a few percent. These point-to-point uncertainties are included in the data in Tables VII–XV.

B. Cross-section extraction

As mentioned in Sec. IV F, the cross-section results should be independent of the choice of parametrization in the extraction method. To evaluate the impact of this choice, we used a different parameter set by replacing the squared DVCS amplitude term with the interference term $\text{Re } \mathcal{C}^{\mathcal{I},V}$, which yields an equally good fit to the data. A difference in the cross-section value of up to 1% appears locally depending on the kinematic bin, as shown in Fig. 21. As a consequence, we estimated the systematic uncertainty from the parameter choice to be 1%.

The extraction procedure was performed in five experimental bins. However, bin migration may occur from events with t values outside the binning range, owing to radiative or resolution effects. To estimate the systematic uncertainty owing to bin migration, we performed the cross-section extraction using a sixth t bin by only taking into account the BH cross section as the acceptance is too limited in this phase-space region to perform an accurate measurement. The effect of bin migration was found negligible everywhere except for the fifth bin in t (largest $|t|$ value), for which variations up to 10% were found for $\phi \simeq 0^\circ$, smaller around 180° . Therefore,

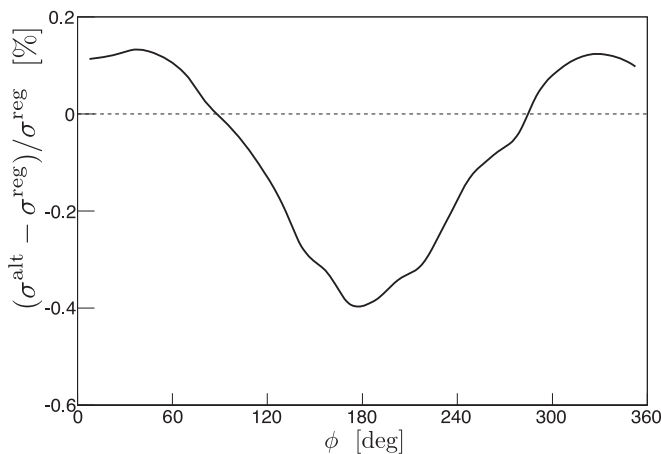


FIG. 21. Difference in % between the cross section extracted with the squared DVCS amplitude term and with the $\text{Re } \mathcal{C}^{\mathcal{I},V}$ term for $x_B = 0.37$, $Q^2 = 2.36 \text{ GeV}^2$, and $-t = 0.33 \text{ GeV}^2$. The ϕ profile of the difference is a consequence of the small $\cos \phi$ and $\cos 2\phi$ dependencies of the $\text{Re } \mathcal{C}^{\mathcal{I},V}$ kinematic coefficient. Both extractions give almost the same reduced $\chi^2/\text{DOF} = 0.94$ (nominal) and 0.93 (alternate) for the entire Kin2 setting.

TABLE V. Normalization systematic uncertainties in the extracted photon electroproduction cross sections. The systematic uncertainty coming from the fit parameter choice is not a normalization error per se, but we consider that 1% is an upper limit for this error on all kinematic bins. The helicity-dependent cross sections have an extra uncertainty stemming from the beam polarization measurement. The last column gives the section in which each systematic effect is discussed.

Systematic uncertainty	Value (%)	Section
HRS acceptance cut	1	IV A
Electron ID	0.5	IV D
HRS multitrack	0.5	IV D
Multicluster	0.4	IV D
Corrected luminosity	1	IV D
Fit parameters	1	VI B
Radiative corrections	2	V
Beam polarization	2	III A 3
Total (helicity-independent)	2.8	
Total (helicity-dependent)	3.4	

we have added a 10% systematic uncertainty corresponding to this bin migration effect to the point-to-point systematic uncertainty in the fifth t bin of Tables VII, VIII, XII, and XIII. Note that this bin migration effect is found to be negligible for helicity-dependent cross sections.

C. Correlated uncertainties

Table V presents the systematic uncertainties on the cross section stemming from normalization effects, which are considered 100% correlated bin by bin. Note that the helicity-dependent cross sections have an additional uncertainty coming from the beam polarization measurement. The determination of these uncertainties are discussed in the associated section listed in the table.

VII. RESULTS

The cross-section extraction procedure described in Sec. IV F was applied to all data sets for both the unpolarized and the helicity-dependent cases. In addition to the Q^2 dependence of the helicity-dependent cross sections, we were able to measure the Q^2 dependence of the unpolarized cross section at two values of $Q^2 = 1.9$ and 2.3 GeV^2 . The x_B dependence of helicity-dependent and -independent cross sections were studied using the KinX2 and KinX3 settings. Note that an extra bin in t was analyzed compared to our previous publication [30] for all (x_B, Q^2) settings.

An example of the cross-section extraction is presented in Fig. 22 for $x_B = 0.37$, $Q^2 = 2.36 \text{ GeV}^2$, and $-t = 0.32 \text{ GeV}^2$, along with the different contributions resulting from the fit, which gave an overall χ^2/DOF of 1.1. For the unpolarized cross section, one observes a significant contribution from the term associated with $|\mathcal{T}^{\text{DVCS}}|^2$, in addition to a large contribution from the interference term. As pointed out before, we only kept the twist-2 $|\mathcal{T}^{\text{DVCS}}|^2$ contribution in our cross-

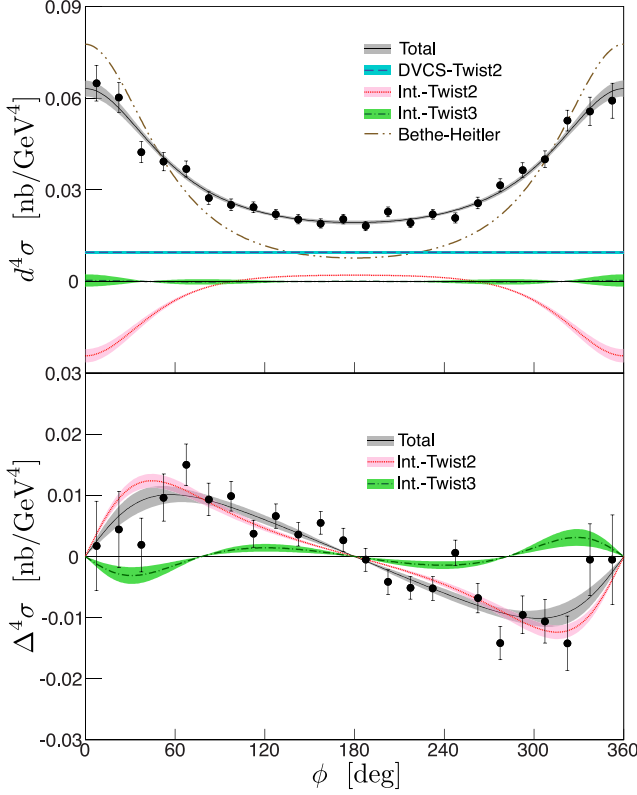


FIG. 22. (Color online) Unpolarized (top) and helicity-dependent (bottom) cross-section extraction for the Kin3 bin $-t = 0.32 \text{ GeV}^2$. The error bars on the data points are statistical only. The shaded areas represent the statistical uncertainty for each contribution.

section extraction. By construction, this term is ϕ independent, in contrast to the BH and interference contributions which contain the $\mathcal{P}_1(\phi)\mathcal{P}_2(\phi)$ electron propagators as shown in Eq. (6). The precision of the data is such that contributions other than the BH are obviously necessary to explain the observed cross section. The helicity-dependent cross section is dominated by the twist-2 interference term, as noticed before in this experiment [30] and elsewhere [28,34]. These conclusions extend to all bins in our analysis, whose results are shown in Sec. VII D. Table VI lists the χ^2/DOF resulting from the extraction method for all kinematics settings.

TABLE VI. χ^2/DOF resulting from the extraction method for all kinematics settings. The subscript “pol” stands for polarized cross sections, “unp” for unpolarized cross sections. The polarized cross sections are extracted using 109 degrees of freedom; the unpolarized cross section are extracted using 104 degrees of freedom.

Settings	$\chi^2_{\text{pol}}/\text{DOF}$	$\chi^2_{\text{unp}}/\text{DOF}$
Kin1	0.88	—
Kin2	1.00	1.16
KinX2	0.96	0.82
Kin3	1.15	0.99
KinX3	1.08	1.28

A. Scan in Q^2

The combinations of effective CFFs which have been extracted from the fitting procedure for Kin1–3 using the formalism developed in Ref. [41] are shown integrated over t in Fig. 23. With the choice of parameters used to describe the kinematical dependence of the cross sections (as explained in Sec. IV F), the contribution associated with the $|\mathcal{T}^{\text{DVCS}}|^2$ term is large for the unpolarized case. The twist-2 interference term is significant and the contribution of the twist-3 interference term is often found to be small, with large systematic uncertainties. For the polarized case, the twist-2 interference term is dominant, the twist-3 contribution is small, again with large systematic uncertainties.

Overall, the extracted parameters show no Q^2 dependence for either the helicity-dependent or the helicity-independent cases over our Q^2 range. Note that the logarithmic Q^2 evolution can safely be neglected within this Q^2 lever arm at this x_B .

The full set of results for settings Kin1–3 are presented in Figs. 24–28 in Sec. VII D.

B. Scan in x_B

The results from KinX2 and KinX3 showing the x_B dependence of the cross sections are presented in Figs. 29–32 in Sec. VII D. KinX3 has a limited acceptance close to 0° , which increases the correlation between the different fit parameters describing the azimuthal dependence of the cross section. Indeed, the separation of the real part of the twist-2 interference and $|\mathcal{T}^{\text{DVCS}}|^2$ contributions in the fit is particularly sensitive to the relative value of the cross section measured around both $\phi = 0^\circ$ and 180° . These difficulties have basically no impact on the determination of the cross sections themselves. The measured x_B dependence will set interesting constraints on GPD models and parametrizations, especially thanks to the relatively high precision of our data.

C. Comparison with GPD models

In Fig. 33, we compare our results with various models and previous fits to data. We have chosen to use two different kinds of double-distribution GPD models, namely the VGG [65] and KMS12 [66] models. Note that, in contrast to VGG, the KMS12 model was tuned using vector meson data at low to very-low x_B and is not considered adapted yet to the valence quark region. In any case, one observes that both models overshoot the helicity-dependent cross-section data in this Kin2 bin, whereas VGG is more adequate for the unpolarized data.

In addition, we have compared our data with the KM10a model [67], which fits some of its parameters to all DVCS data available worldwide except for the previously published results from a subset of the present experiment.

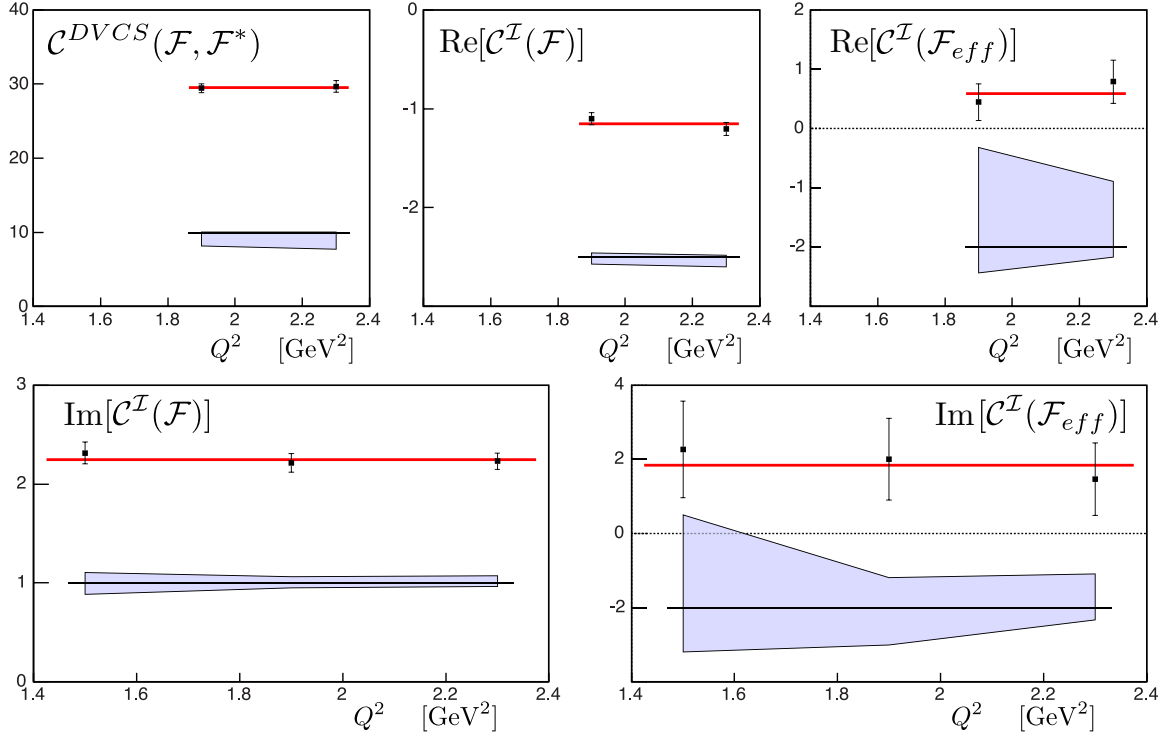


FIG. 23. (Color online) Combinations of effective CFFs extracted from the fitting procedure described in Sec. IV F using the formalism developed in Ref. [41], integrated over t and plotted as a function of Q^2 . The top three plots show the effective CFFs resulting from the unpolarized cross-section fit (Kin2 and Kin3), whereas the bottom plots show the effective CFFs resulting from the helicity-dependent cross-section fit (Kin1–3). The shaded areas represent systematic uncertainties.

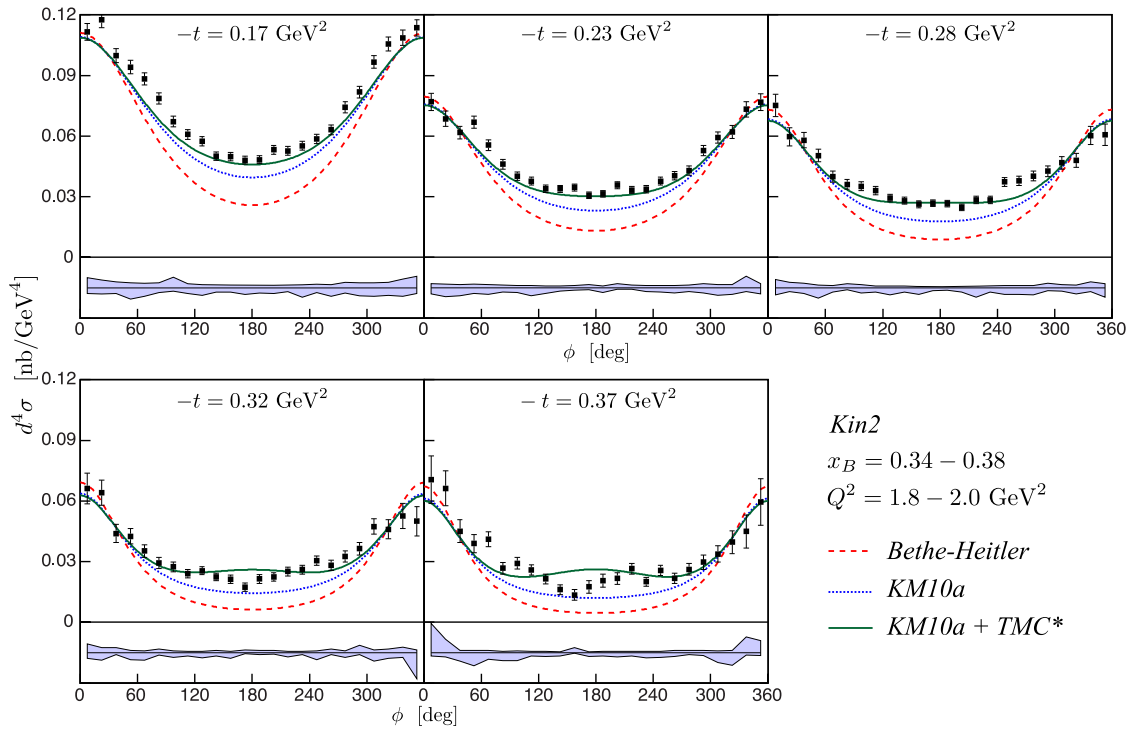


FIG. 24. (Color online) Unpolarized cross sections for Kin2. Each t -bin corresponds to slightly different average (x_B, Q^2) values; their range is indicated in the legend, their specific values are listed in the data tables. Error bars are statistical only. The light blue area represents the point-to-point systematic uncertainties added linearly to the normalization error. The KM10a model along with its modified version (including the TMC effects) are shown as dotted blue and solid green curves, respectively. The BH contribution is represented as a dashed red line.

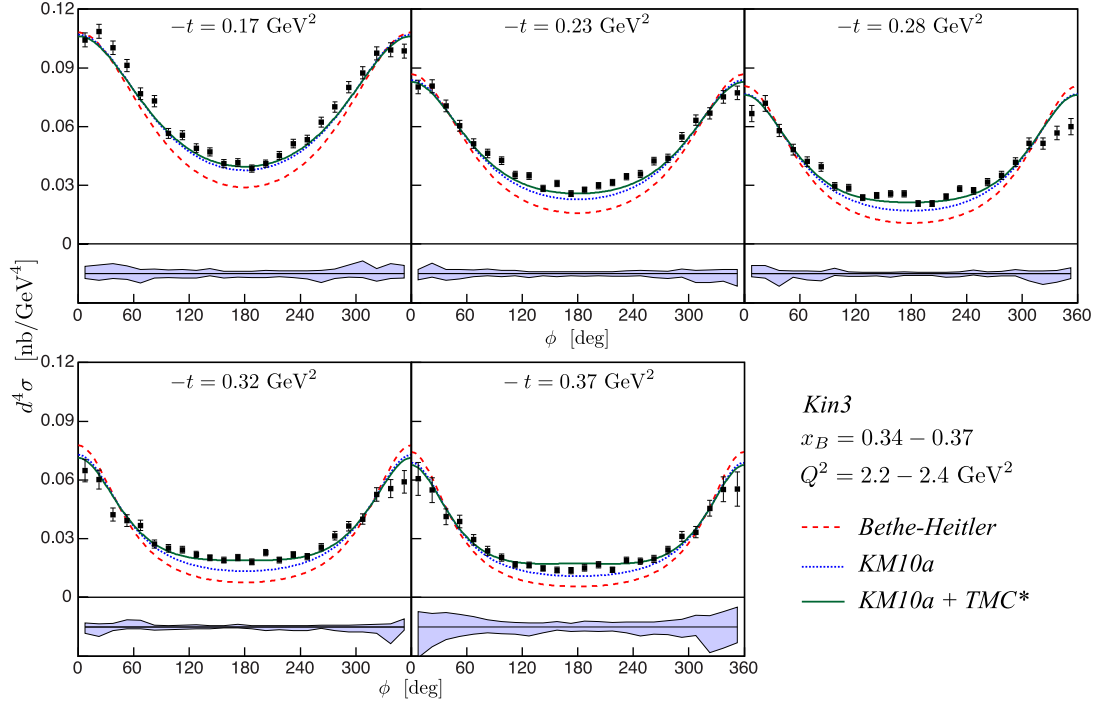


FIG. 25. (Color online) Unpolarized cross sections for Kin3. Error bars are statistical only. The light blue area represents the point-to-point systematic uncertainties added linearly to the normalization error. The KM10a model along with its modified version (including the TMC effects) are shown as dotted blue and solid green curves, respectively. The BH contribution is represented as a dashed red line.

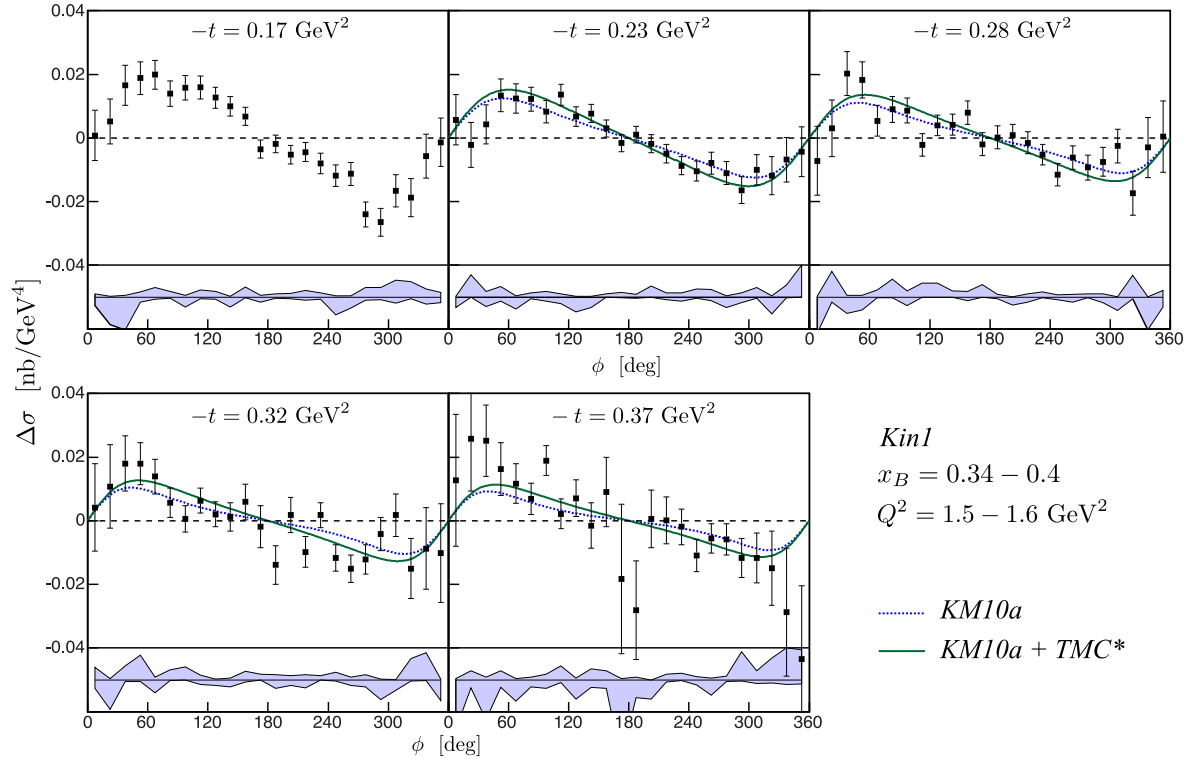


FIG. 26. (Color online) Cross-section differences for opposite beam helicities for Kin1. Error bars are statistical only. The light blue area represents the point-to-point systematic uncertainties added linearly to the normalization error. The KM10a model along with its modified version (including the TMC effects) are shown as dotted blue and solid green curves, respectively, except for the first t bin, which is outside the prescribed range of this model.

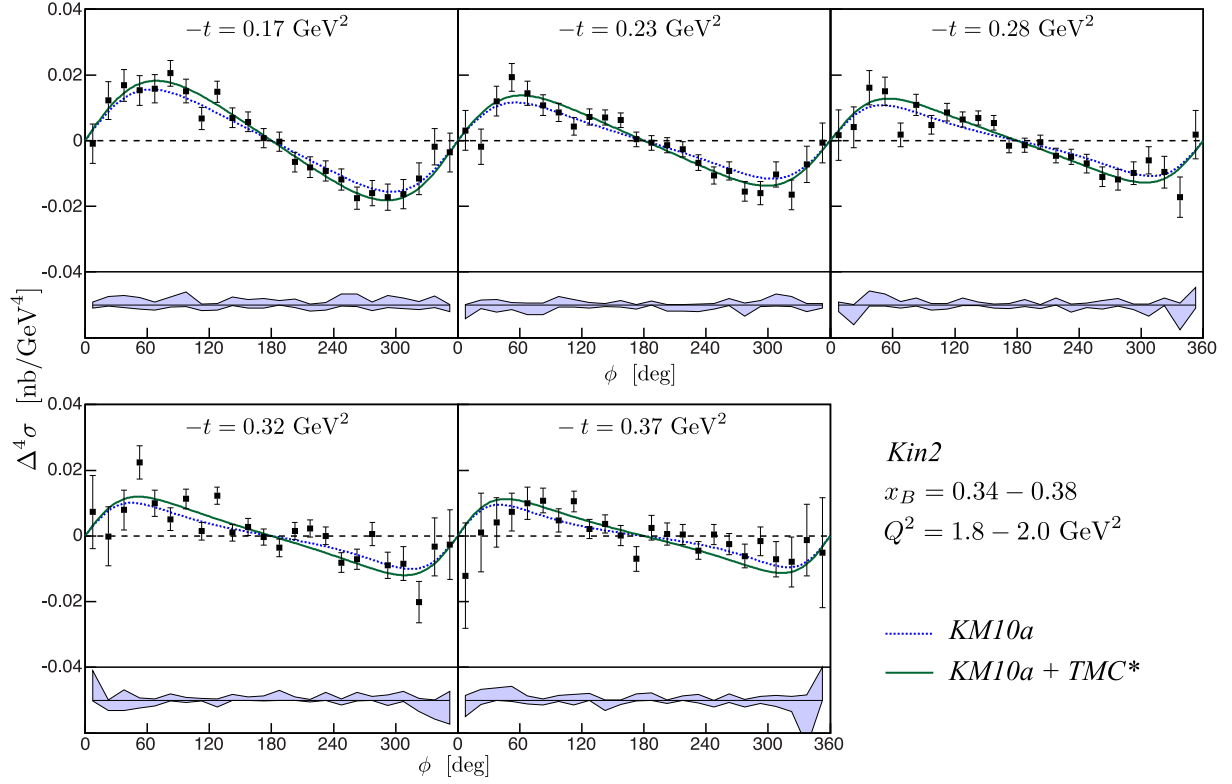


FIG. 27. (Color online) Cross-section differences for opposite beam helicities for Kin2. Error bars are statistical only. The light blue area represents the point-to-point systematic uncertainties added linearly to the normalization error. The KM10a model along with its modified version (including the TMC effects) are shown as dotted blue and solid green curves, respectively.

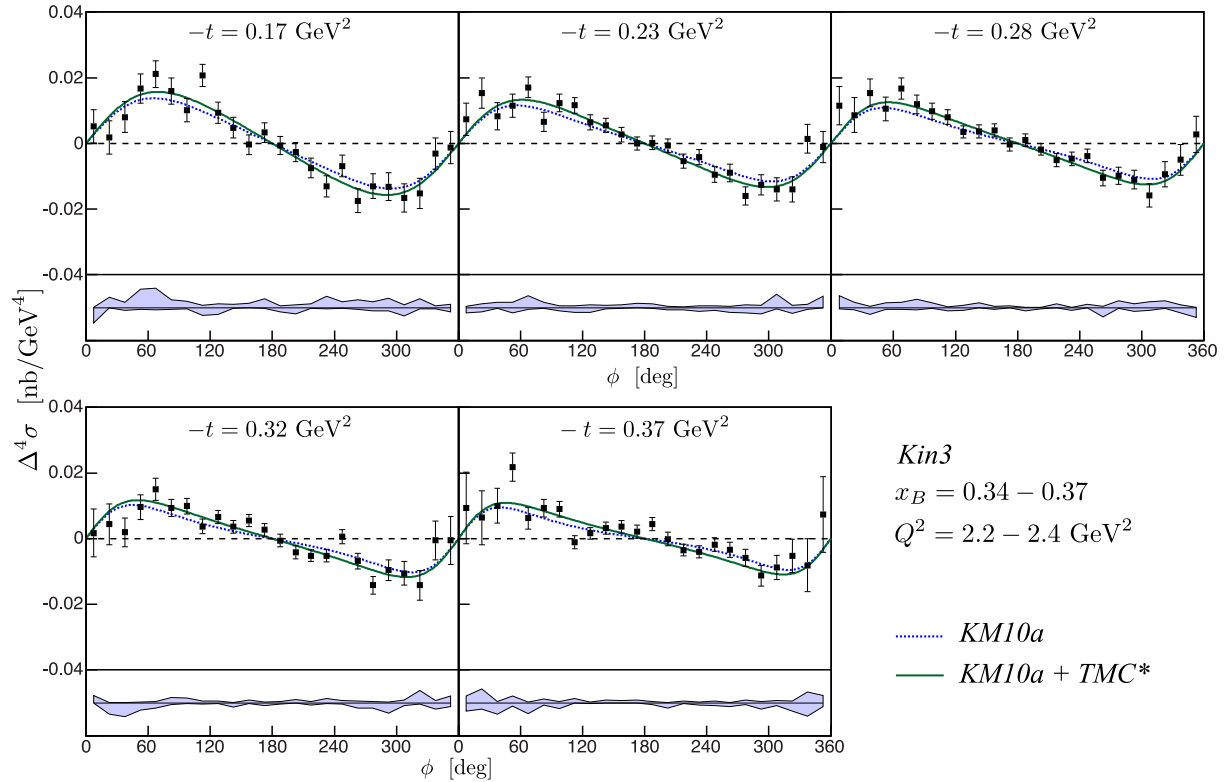


FIG. 28. (Color online) Cross-section differences for opposite beam helicities for Kin3. Error bars are statistical only. The light blue area represents the point-to-point systematic uncertainties added linearly to the normalization error. The KM10a model along with its modified version (including the TMC effects) are shown as dotted blue and solid green curves, respectively.

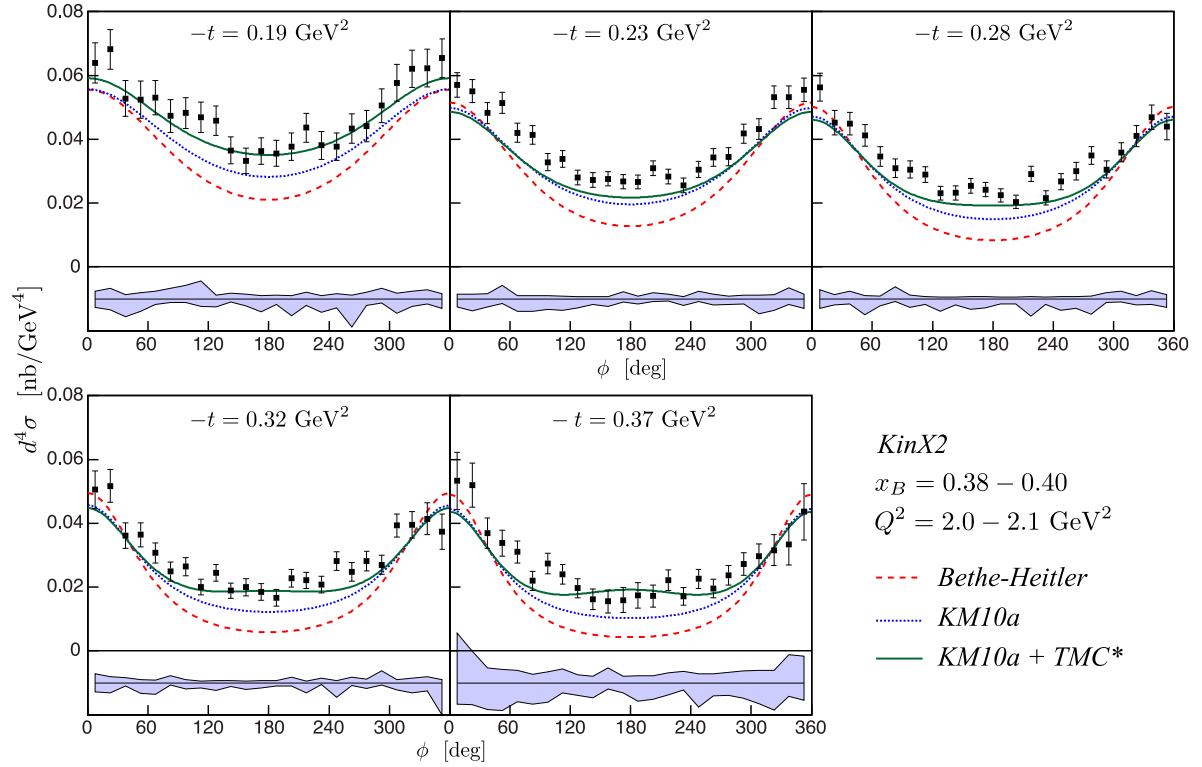


FIG. 29. (Color online) Unpolarized cross sections for KinX2. Error bars are statistical only. The light blue area represents the point-to-point systematic uncertainties added linearly to the normalization error. The KM10a model along with its modified version (including the TMC effects) are shown as dotted blue and solid green curves, respectively. The BH contribution is represented as a dashed red line.

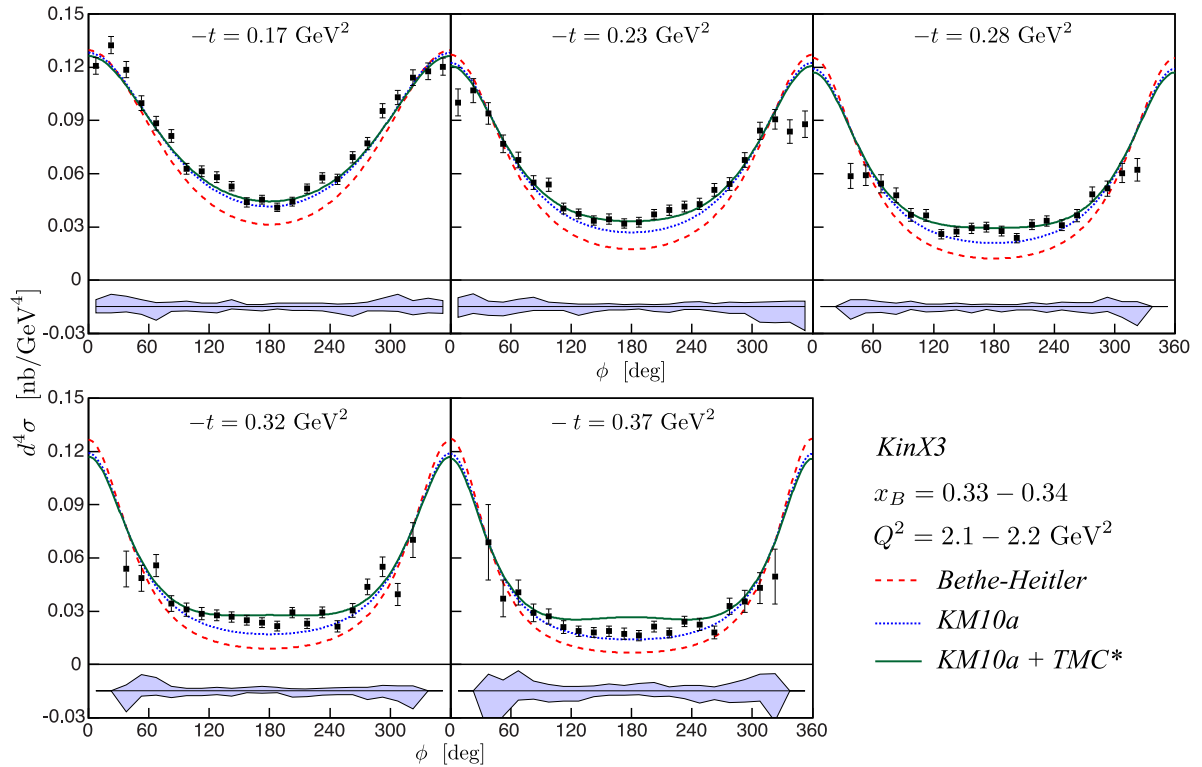


FIG. 30. (Color online) Unpolarized cross sections for KinX3. Error bars are statistical only. The light blue area represents the point-to-point systematic uncertainties added linearly to the normalization error. The KM10a model along with its modified version (including the TMC effects) are shown as dotted blue and solid green curves, respectively. The BH contribution is represented as a dashed red line.

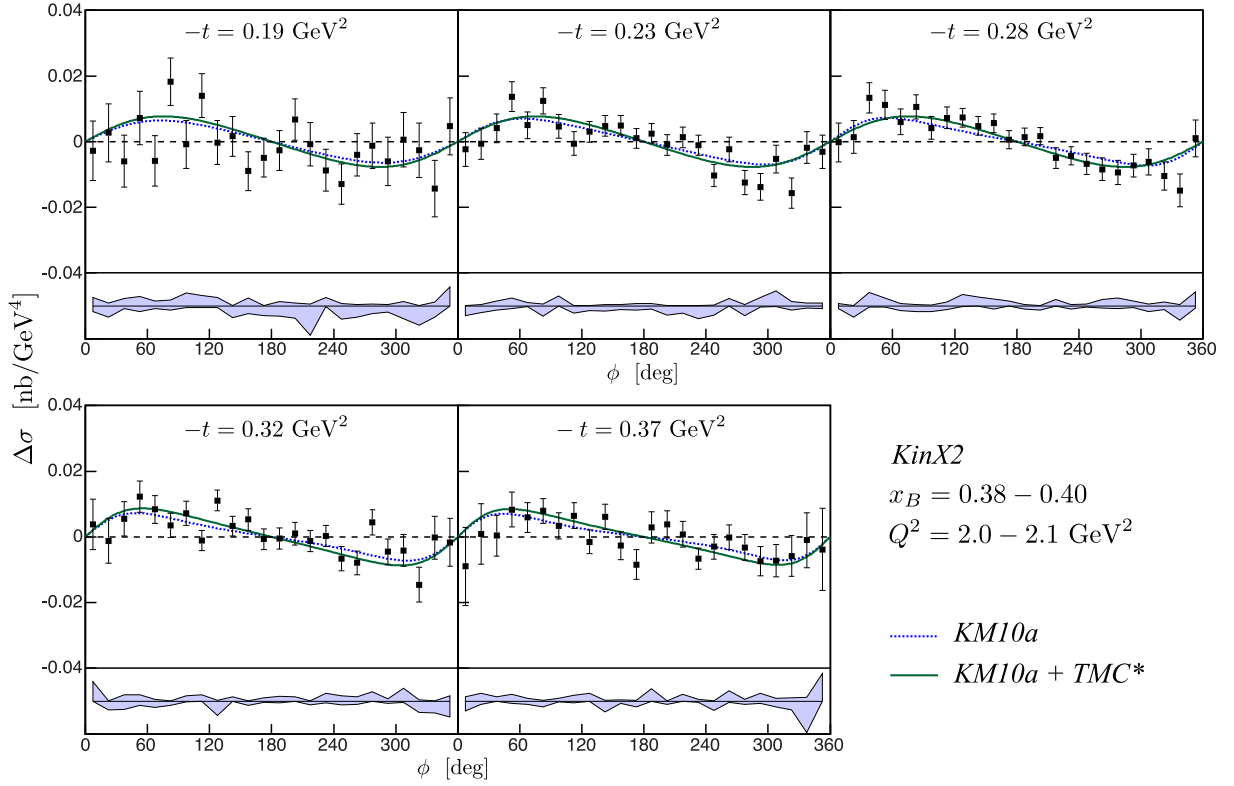


FIG. 31. (Color online) Cross-section differences for opposite beam helicities for KinX2. Error bars are statistical only. The light blue area represents the point-to-point systematic uncertainties added linearly to the normalization error. The KM10a model along with its modified version (including the TMC effects) are shown as dotted blue and solid green curves, respectively.

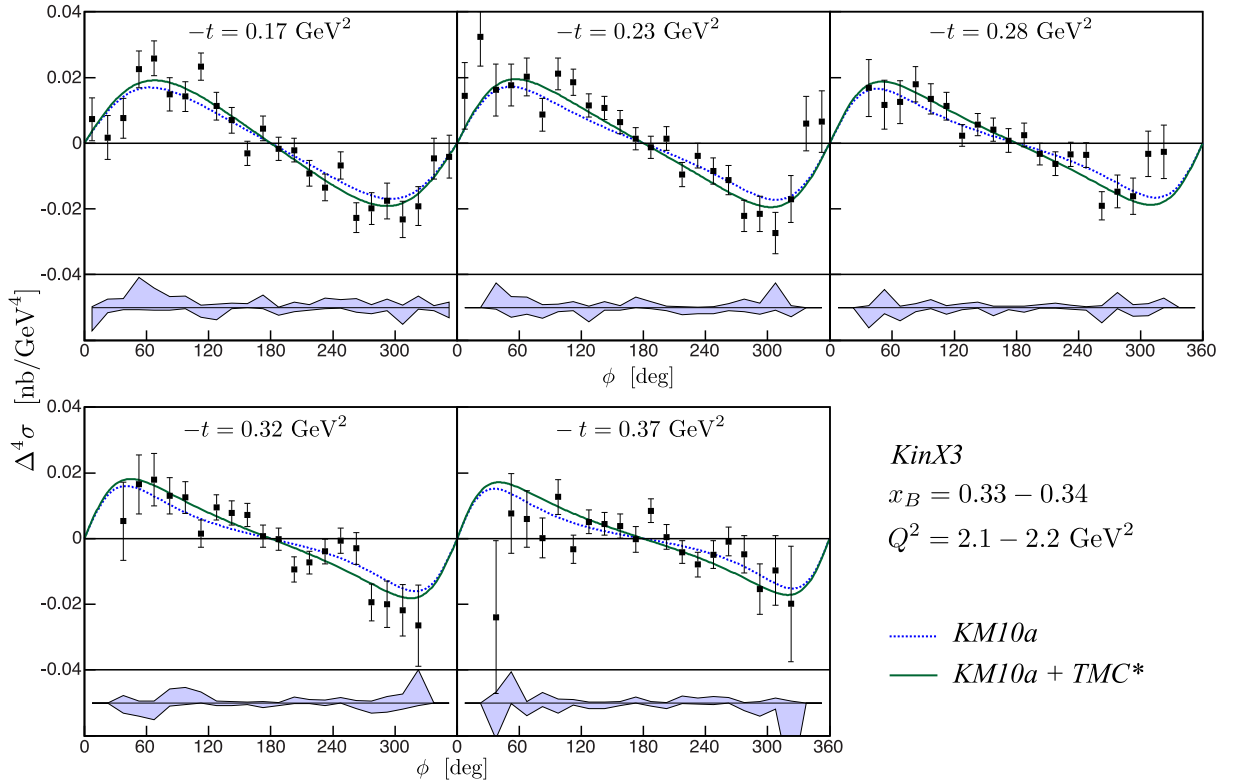


FIG. 32. (Color online) Cross-section differences for opposite beam helicities for KinX3. Error bars are statistical only. The light blue area represents the point-to-point systematic uncertainties added linearly to the normalization error. The KM10a model along with its modified version (including the TMC effects) are shown as dotted blue and solid green curves, respectively.

The consequence is that no absolute DVCS cross-section data in the valence region were used for this fit. The KM10a model is clearly very close to the helicity-dependent data, which is not a surprise considering that the CLAS asymmetry data in the same kinematic region were used to constrain this model. However, this same model significantly underestimates the DVCS unpolarized cross section around $\phi = 180^\circ$.

Recently, kinematic twist-4 target-mass and finite- t corrections (TMC) have been calculated for DVCS on the proton and estimated for the KMS12 model [68,69] (shown in Fig. 33). Because this model is not adapted to the valence quark region, we have extracted the correction factor and applied it to the KM10a parametrization.³ This allows us to gauge the effect of such corrections in the most realistic model available to us. It is striking that the lack of strength observed at $\phi = 180^\circ$ for the KM10a model is largely compensated by the TMC, giving a surprisingly good agreement between this modified KM10a model and our data.

An update of the KMS12 model, taking into account the DVCS data in the valence region, would allow for a much stronger statement about the necessity of target-mass and finite- t corrections at these moderate Q^2 . At any rate, we emphasize that the high precision of the present data is crucial to disentangle the different contributions at play in this critical area around 180° . There is no doubt that the addition of our new data set to the KM fit will be most interesting, especially in the light of these new higher-twist calculations.

All the features we have described remain true for most of our data bins, which are shown in Sec. VII D. It is interesting to note that for the highest bins in t , especially for Kin2 and KinX2 (Figs. 24 and 29), the TMC to the unpolarized cross section is of the same order as the cross section itself around $\phi = 180^\circ$. This corresponds to values of $(-t/Q^2) \sim 0.15$ or larger. It is not unreasonable to expect that higher-order corrections in $(-t/Q^2)^2$ start to be important at these values, and may compensate the peculiar behavior of the TMC around $\phi = 180^\circ$, which is not visible in data. Efforts to achieve a resummation of the $(-t/Q^2)^k$ series to all orders are currently undertaken [71].

³In principle, the full calculation of TMC can only be evaluated knowing the GPDs in the entire region $x > \xi$. KM10a, however, uses a dispersion relation fit for the valence region by parametrizing the GPD H on the crossover $x = \xi$ line and a subtraction constant. Moreover, even if the main part of the TMC for unpolarized observables could, in principle, be evaluated by a change of conventions to CFFs and the ξ variable [70], the KM10a parametrization is currently only available as a binary package giving directly the photon electroproduction cross section.

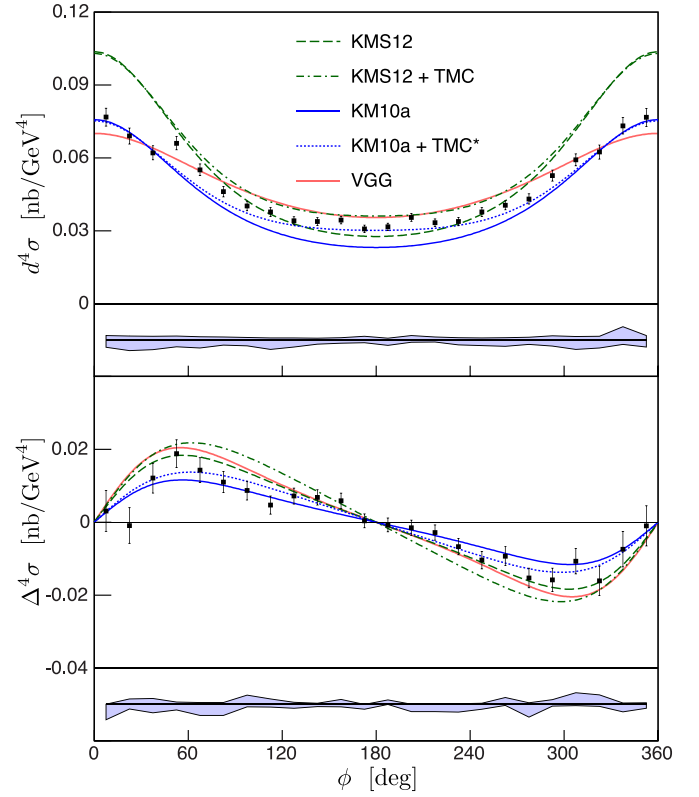


FIG. 33. (Color online) Unpolarized (top) and helicity-dependent (bottom) cross sections for the Kin2 bin $-t = 0.23 \text{ GeV}^2$. The light blue area represents the point-to-point systematic uncertainties added linearly to the normalization error. The predictions from the distribution-based models KMS12 and VGG are shown as the dashed green and solid red curves, respectively. The KM10a fit is represented as the solid blue line. The target-mass and finite- t corrections are included in the KMS12 model and shown as the dot-dashed curve. The correction is then applied to the KM10a model shown as the dotted blue line.

D. Results for all kinematics

In the following we present the unpolarized cross sections for Kin2 and Kin3, as well as KinX2 and KinX3 in Figs. 24, 25, 29 and 30, respectively, for a total of 468 experimental bins in $(x_B, Q^2, -t, \phi)$. The cross-section differences for opposite beam helicities are presented for Kin1–3, KinX2, and KinX3 in Figs. 26–28, 31, and 32, for a total of 588 experimental bins in $(x_B, Q^2, -t, \phi)$. All results are compared to only two models for clarity: the KM10a model and its modified version, including the TMC effects as described in Sec. VII C. All the cross-section data are also listed in Tables VII–XV along with their statistical and point-to-point systematic uncertainties. The correlated systematic uncertainties are summarized in Table V.

TABLE VII. Unpolarized cross sections in pb GeV^{-4} with their statistical and asymmetric point-to-point systematic uncertainties for the Kin2 setting, for each bin in ϕ (vertical) and $-t$ (horizontal).

ϕ (deg)	$x_B = 0.343$ $Q^2 = 1.820 \text{ GeV}^2$ $t = -0.172 \text{ GeV}^2$		$x_B = 0.368$ $Q^2 = 1.933 \text{ GeV}^2$ $t = -0.232 \text{ GeV}^2$		$x_B = 0.375$ $Q^2 = 1.964 \text{ GeV}^2$ $t = -0.278 \text{ GeV}^2$		$x_B = 0.379$ $Q^2 = 1.986 \text{ GeV}^2$ $t = -0.323 \text{ GeV}^2$		$x_B = 0.381$ $Q^2 = 1.999 \text{ GeV}^2$ $t = -0.371 \text{ GeV}^2$	
7.5	111.6 \pm 4.1	+2.3 – 0.0	76.9 \pm 4.2	+0.0 – 1.1	75.2 \pm 5.6	+2.2 – 1.7	66.2 \pm 7.7	+3.2 – 0.9	70.6 \pm 11.8	+20.1 – 7.0
22.5	117.6 \pm 3.9	+0.7 – 0.3	68.6 \pm 3.7	+0.0 – 2.8	59.7 \pm 4.5	+1.4 – 0.6	64.1 \pm 6.3	+0.9 – 2.0	66.3 \pm 8.7	+11.8 – 7.0
37.5	99.8 \pm 3.5	+0.3 – 0.5	61.7 \pm 3.2	+0.0 – 2.6	57.9 \pm 3.8	+0.9 – 1.5	43.9 \pm 4.5	+1.8 – 0.0	45.1 \pm 5.7	+4.5 – 7.8
52.5	94.1 \pm 3.3	+0.0 – 3.4	66.9 \pm 3.0	+0.0 – 1.2	50.4 \pm 3.2	+0.0 – 4.2	42.5 \pm 3.8	+0.0 – 2.8	39.0 \pm 4.5	+3.9 – 9.7
67.5	88.2 \pm 3.0	+0.0 – 2.1	55.5 \pm 2.7	+0.0 – 2.0	40.0 \pm 2.8	+0.2 – 1.1	35.3 \pm 3.1	+0.0 – 2.9	41.0 \pm 3.7	+4.1 – 6.5
82.5	78.7 \pm 2.8	+0.4 – 0.4	46.1 \pm 2.4	+0.1 – 0.9	36.1 \pm 2.5	+1.3 – 0.0	29.4 \pm 2.8	+1.2 – 0.4	26.7 \pm 2.9	+2.7 – 6.0
97.5	67.2 \pm 2.6	+3.6 – 0.0	40.1 \pm 2.1	+0.1 – 1.4	35.2 \pm 2.2	+0.6 – 1.8	27.4 \pm 2.4	+0.0 – 2.0	29.2 \pm 2.8	+2.9 – 6.2
112.5	60.8 \pm 2.4	+0.5 – 1.3	37.7 \pm 2.0	+0.0 – 3.1	33.0 \pm 2.1	+0.0 – 1.4	24.0 \pm 2.1	+0.0 – 1.3	25.9 \pm 2.6	+2.6 – 3.6
127.5	57.5 \pm 2.3	+0.0 – 2.3	34.0 \pm 1.8	+0.0 – 2.2	29.3 \pm 1.8	+0.1 – 3.0	25.5 \pm 2.0	+0.0 – 2.2	21.4 \pm 2.4	+2.2 – 3.6
142.5	50.1 \pm 2.1	+0.2 – 0.8	33.9 \pm 1.7	+0.0 – 0.9	28.0 \pm 1.7	+0.0 – 1.4	22.4 \pm 1.9	+0.5 – 1.3	16.1 \pm 2.4	+1.6 – 3.0
157.5	49.9 \pm 2.1	+0.0 – 0.9	34.6 \pm 1.7	+0.2 – 0.5	26.3 \pm 1.7	+0.0 – 2.8	21.3 \pm 2.1	+0.0 – 2.6	13.5 \pm 2.7	+4.0 – 1.3
172.5	48.1 \pm 2.0	+0.0 – 2.0	30.7 \pm 1.6	+0.9 – 0.3	26.8 \pm 1.7	+0.0 – 0.7	17.4 \pm 2.0	+1.3 – 0.0	17.5 \pm 3.2	+1.7 – 3.4
187.5	48.3 \pm 2.0	+0.0 – 1.5	31.5 \pm 1.6	+0.0 – 1.6	26.6 \pm 1.7	+0.2 – 0.6	21.4 \pm 2.1	+0.7 – 0.3	20.5 \pm 3.2	+2.0 – 3.4
202.5	53.2 \pm 2.1	+0.0 – 1.6	35.7 \pm 1.7	+1.2 – 0.0	24.7 \pm 1.6	+0.0 – 1.5	22.5 \pm 2.1	+0.6 – 0.3	21.7 \pm 2.9	+2.2 – 4.0
217.5	52.7 \pm 2.2	+0.0 – 0.7	33.3 \pm 1.7	+0.6 – 0.0	28.4 \pm 1.8	+0.0 – 4.2	25.1 \pm 2.1	+0.0 – 1.7	26.5 \pm 2.6	+2.7 – 4.1
232.5	55.2 \pm 2.2	+0.0 – 3.4	33.7 \pm 1.8	+0.2 – 1.1	28.4 \pm 1.9	+0.0 – 1.5	26.0 \pm 2.1	+0.0 – 0.4	20.1 \pm 2.2	+2.0 – 4.4
247.5	58.5 \pm 2.3	+0.2 – 0.9	37.7 \pm 2.0	+0.0 – 1.3	37.3 \pm 2.2	+0.0 – 2.5	30.5 \pm 2.4	+0.1 – 3.1	25.7 \pm 2.6	+2.6 – 4.4
262.5	63.1 \pm 2.4	+0.0 – 2.8	40.4 \pm 2.1	+0.0 – 1.7	37.8 \pm 2.3	+0.0 – 2.5	28.2 \pm 2.5	+1.3 – 0.3	21.7 \pm 2.6	+2.8 – 3.8
277.5	74.2 \pm 2.7	+0.8 – 0.7	42.9 \pm 2.3	+0.2 – 0.7	40.2 \pm 2.4	+0.0 – 2.6	32.6 \pm 2.7	+0.0 – 1.7	26.2 \pm 2.9	+3.1 – 2.9
292.5	81.8 \pm 2.9	+0.3 – 2.1	52.8 \pm 2.6	+0.6 – 1.2	42.6 \pm 2.7	+1.1 – 0.1	36.4 \pm 3.1	+3.0 – 0.0	29.7 \pm 3.5	+3.4 – 3.7
307.5	96.7 \pm 3.2	+0.0 – 1.8	59.3 \pm 2.8	+0.0 – 2.6	46.8 \pm 3.1	+0.4 – 0.4	47.4 \pm 3.8	+0.0 – 3.2	33.8 \pm 4.1	+3.4 – 7.5
322.5	105.6 \pm 3.5	+0.0 – 1.2	62.0 \pm 3.2	+0.0 – 1.9	48.0 \pm 3.5	+0.0 – 2.0	46.0 \pm 4.7	+0.7 – 1.8	39.6 \pm 5.7	+4.0 – 9.5
337.5	108.6 \pm 3.8	+1.5 – 1.5	73.3 \pm 3.8	+4.1 – 0.0	60.3 \pm 4.5	+1.6 – 0.5	52.6 \pm 6.3	+1.4 – 0.8	44.9 \pm 8.2	+11.4 – 4.5
352.5	113.6 \pm 4.0	+2.9 – 0.0	76.8 \pm 4.2	+0.0 – 1.1	60.7 \pm 5.3	+0.5 – 3.5	50.0 \pm 7.3	+0.0 – 13.0	59.5 \pm 11.6	+10.4 – 6.0

TABLE VIII. Unpolarized cross sections in pb GeV⁻⁴ with their statistical and asymmetric point-to-point systematic uncertainties for the Kin3 setting, for each bin in ϕ (vertical) and $-t$ (horizontal).

ϕ (deg)	$x_B = 0.345$ $Q^2 = 2.218 \text{ GeV}^2$ $t = -0.176 \text{ GeV}^2$		$x_B = 0.363$ $Q^2 = 2.318 \text{ GeV}^2$ $t = -0.232 \text{ GeV}^2$		$x_B = 0.368$ $Q^2 = 2.348 \text{ GeV}^2$ $t = -0.279 \text{ GeV}^2$		$x_B = 0.371$ $Q^2 = 2.360 \text{ GeV}^2$ $t = -0.325 \text{ GeV}^2$		$x_B = 0.373$ $Q^2 = 2.375 \text{ GeV}^2$ $t = -0.372 \text{ GeV}^2$	
7.5	104.3 \pm 3.6	+1.1 -0.2	80.3 \pm 3.5	+0.0 -1.1	66.6 \pm 4.2	+3.1 -0.0	64.8 \pm 5.8	+0.5 -1.9	60.6 \pm 8.4	+6.1 -14.3
22.5	108.6 \pm 3.6	+1.6 -0.9	80.6 \pm 3.3	+3.6 -0.0	71.9 \pm 4.0	+2.6 -0.6	60.2 \pm 4.9	+0.0 -3.9	54.8 \pm 6.3	+5.5 -8.8
37.5	100.3 \pm 3.4	+2.6 -0.0	70.5 \pm 3.0	+0.1 -1.8	58.0 \pm 3.2	+0.0 -5.8	42.3 \pm 3.4	+0.9 -0.6	41.2 \pm 4.1	+6.3 -5.5
52.5	91.2 \pm 3.2	+1.5 -1.0	60.4 \pm 2.7	+0.5 -1.3	48.2 \pm 2.8	+0.2 -0.7	39.2 \pm 3.0	+3.1 -0.0	38.8 \pm 3.3	+5.3 -3.9
67.5	76.8 \pm 2.9	+0.0 -3.1	51.3 \pm 2.4	+0.6 -0.4	42.2 \pm 2.4	+0.2 -2.5	36.8 \pm 2.6	+3.0 -0.0	29.5 \pm 2.6	+4.4 -3.1
82.5	73.0 \pm 2.8	+0.4 -0.6	46.3 \pm 2.2	+1.1 -0.1	39.4 \pm 2.2	+0.0 -3.0	27.3 \pm 2.1	+0.0 -1.0	23.8 \pm 2.2	+3.0 -2.6
97.5	56.5 \pm 2.5	+0.4 -0.7	42.6 \pm 2.0	+0.5 -0.7	29.5 \pm 1.9	+2.1 -0.2	25.1 \pm 1.9	+0.0 -0.8	20.3 \pm 1.9	+2.0 -3.1
112.5	55.7 \pm 2.3	+0.6 -1.2	35.3 \pm 1.8	+0.8 -0.3	28.7 \pm 1.7	+0.0 -0.8	24.3 \pm 1.7	+0.4 -0.7	16.6 \pm 1.6	+1.7 -3.5
127.5	49.0 \pm 2.2	+0.4 -1.1	34.8 \pm 1.7	+0.0 -1.5	23.8 \pm 1.5	+0.0 -0.9	21.9 \pm 1.6	+0.5 -0.4	16.5 \pm 1.5	+1.7 -4.3
142.5	47.0 \pm 2.1	+1.4 -0.0	28.4 \pm 1.6	+0.1 -0.5	24.8 \pm 1.5	+0.0 -0.6	20.3 \pm 1.5	+0.0 -0.6	14.9 \pm 1.4	+1.5 -2.8
157.5	41.1 \pm 2.0	+0.1 -1.4	30.9 \pm 1.6	+0.1 -0.9	25.7 \pm 1.6	+0.0 -1.4	19.0 \pm 1.5	+0.2 -0.2	14.0 \pm 1.5	+2.3 -1.4
172.5	41.6 \pm 2.0	+0.0 -0.9	25.7 \pm 1.5	+0.1 -0.6	25.7 \pm 1.6	+0.1 -0.5	20.4 \pm 1.6	+0.9 -0.0	13.7 \pm 1.7	+1.4 -2.1
187.5	38.5 \pm 1.9	+0.0 -1.1	27.7 \pm 1.5	+0.0 -0.9	20.6 \pm 1.5	+0.0 -0.6	18.1 \pm 1.5	+0.3 -0.6	15.1 \pm 1.7	+2.6 -1.7
202.5	41.1 \pm 1.9	+0.4 -1.1	29.7 \pm 1.6	+0.1 -0.6	20.7 \pm 1.5	+0.1 -0.4	22.8 \pm 1.6	+0.0 -1.7	16.7 \pm 1.6	+2.2 -2.0
217.5	45.3 \pm 2.1	+0.3 -0.6	31.4 \pm 1.6	+0.1 -0.6	24.2 \pm 1.5	+0.0 -1.5	19.1 \pm 1.5	+0.0 -1.0	14.2 \pm 1.4	+1.7 -1.9
232.5	51.3 \pm 2.2	+0.0 -0.9	34.4 \pm 1.7	+0.3 -0.6	28.3 \pm 1.6	+0.0 -1.0	21.9 \pm 1.5	+0.0 -1.5	19.0 \pm 1.5	+1.9 -2.6
247.5	53.3 \pm 2.3	+0.0 -1.6	35.8 \pm 1.8	+0.5 -0.3	27.2 \pm 1.7	+1.3 -0.1	20.8 \pm 1.6	+0.0 -1.5	18.5 \pm 1.7	+2.0 -4.3
262.5	62.2 \pm 2.5	+0.0 -3.2	42.4 \pm 2.0	+0.1 -1.1	31.7 \pm 1.8	+0.1 -1.0	25.6 \pm 1.9	+0.3 -0.1	19.6 \pm 1.8	+2.0 -3.3
277.5	70.0 \pm 2.7	+0.4 -1.0	43.9 \pm 2.1	+0.0 -1.6	35.1 \pm 2.0	+0.1 -0.3	31.5 \pm 2.1	+0.0 -1.2	24.2 \pm 2.0	+2.4 -3.3
292.5	80.1 \pm 2.9	+2.3 -0.0	54.6 \pm 2.3	+1.0 -0.6	41.8 \pm 2.2	+1.2 -0.1	36.4 \pm 2.4	+0.0 -1.9	31.2 \pm 2.5	+3.1 -4.5
307.5	87.4 \pm 3.1	+4.3 -0.0	63.3 \pm 2.6	+0.0 -3.3	51.4 \pm 2.7	+0.0 -2.6	40.0 \pm 2.7	+0.0 -1.8	33.3 \pm 2.9	+4.9 -3.5
322.5	97.4 \pm 3.3	+0.0 -1.8	66.8 \pm 2.9	+0.0 -3.3	51.4 \pm 2.9	+0.0 -4.9	52.6 \pm 3.4	+0.0 -2.1	45.5 \pm 4.0	+4.6 -12.2
337.5	99.2 \pm 3.5	+2.7 -0.0	75.2 \pm 3.3	+0.0 -2.2	56.8 \pm 3.5	+0.0 -3.2	55.7 \pm 4.6	+0.0 -8.2	55.2 \pm 6.4	+6.2 -9.5
352.5	98.6 \pm 3.6	+1.7 -0.0	77.3 \pm 3.5	+0.0 -4.7	60.0 \pm 4.1	+2.0 -1.1	59.1 \pm 5.7	+3.2 -0.0	55.4 \pm 8.7	+8.6 -6.8

TABLE IX. Cross-section differences for opposite beam helicities in pb GeV⁻⁴ with their statistical and asymmetric point-to-point systematic uncertainties for the Kin1 setting, for each bin in ϕ (vertical) and $-t$ (horizontal).

ϕ (deg)	$x_B = 0.345$ $Q^2 = 1.453 \text{ GeV}^2$ $t = -0.170 \text{ GeV}^2$		$x_B = 0.374$ $Q^2 = 1.552 \text{ GeV}^2$ $t = -0.232 \text{ GeV}^2$		$x_B = 0.385$ $Q^2 = 1.589 \text{ GeV}^2$ $t = -0.278 \text{ GeV}^2$		$x_B = 0.391$ $Q^2 = 1.608 \text{ GeV}^2$ $t = -0.323 \text{ GeV}^2$		$x_B = 0.399$ $Q^2 = 1.633 \text{ GeV}^2$ $t = -0.370 \text{ GeV}^2$	
7.5	0.8 ± 7.9	+1.0 -3.0	5.7 ± 7.9	+0.0 -3.8	-7.2 ± 10.8	+0.0 -13.5	4.2 ± 13.8	+4.5 -3.2	12.7 ± 20.7	+0.0 -16.2
22.5	5.2 ± 7.1	+0.0 -9.4	-2.2 ± 7.1	+8.4 -0.0	3.1 ± 8.9	+9.9 -1.8	10.8 ± 13.1	+0.0 -11.6	25.7 ± 16.3	+2.6 -1.3
37.5	16.5 ± 6.3	+0.0 -10.7	4.3 ± 6.1	+1.9 -3.4	20.3 ± 6.9	+0.0 -5.1	18.0 ± 8.7	+3.8 -0.0	25.2 ± 11.2	+0.0 -12.1
52.5	18.8 ± 5.2	+1.1 -1.1	13.4 ± 5.1	+3.2 -1.2	18.3 ± 5.7	+0.0 -4.2	18.0 ± 6.6	+7.8 -0.0	16.3 ± 8.3	+2.6 -1.8
67.5	19.9 ± 4.5	+2.6 -0.0	12.4 ± 4.6	+0.0 -4.0	5.4 ± 4.8	+2.4 -0.0	13.9 ± 5.4	+0.4 -4.6	11.7 ± 6.2	+0.0 -6.8
82.5	14.0 ± 4.0	+1.6 -0.0	12.2 ± 3.8	+1.0 -0.0	9.0 ± 4.1	+6.1 -0.0	5.7 ± 4.6	+3.6 -0.0	6.9 ± 4.9	+0.6 -2.2
97.5	15.8 ± 3.8	+0.0 -2.8	8.3 ± 3.5	+1.6 -1.1	8.6 ± 3.9	+1.8 -2.9	0.6 ± 4.2	+4.5 -0.0	18.9 ± 4.7	+1.4 -2.3
112.5	15.9 ± 3.6	+1.9 -0.2	13.6 ± 3.3	+0.7 -1.7	-2.2 ± 3.5	+5.1 -0.0	6.3 ± 3.9	+1.3 -1.4	2.2 ± 4.7	+4.8 -0.8
127.5	12.7 ± 3.3	+1.5 -0.3	6.7 ± 3.1	+0.0 -4.9	4.0 ± 3.2	+4.7 -0.0	2.0 ± 3.9	+0.1 -2.1	7.1 ± 5.8	+0.3 -7.2
142.5	10.0 ± 3.1	+0.0 -3.0	7.7 ± 2.8	+0.0 -3.4	4.2 ± 3.3	+1.8 -0.0	1.2 ± 4.5	+0.6 -3.0	-1.5 ± 7.1	+4.4 -2.8
157.5	6.8 ± 2.9	+3.0 -0.0	3.0 ± 2.7	+1.1 -0.0	8.0 ± 3.7	+0.9 -1.8	5.9 ± 5.6	+4.0 -0.7	9.1 ± 10.9	+3.5 -4.0
172.5	-3.5 ± 2.8	+0.4 -1.6	-1.6 ± 2.7	+1.5 -0.3	-2.0 ± 3.6	+5.0 -0.0	-1.8 ± 6.6	+2.3 -0.0	-18.3 ± 23.5	+0.0 -34.1
187.5	-1.9 ± 2.8	+1.1 -0.3	1.0 ± 2.6	+1.0 -0.4	0.2 ± 3.6	+1.2 -0.8	-13.9 ± 6.1	+0.0 -4.2	-28.1 ± 15.5	+5.6 -7.0
202.5	-5.3 ± 2.9	+1.1 -0.3	-1.8 ± 2.8	+4.0 -0.0	0.9 ± 3.4	+0.0 -3.4	1.8 ± 5.5	+2.0 -2.1	0.6 ± 9.0	+0.0 -8.1
217.5	-4.4 ± 3.0	+2.0 -0.8	-4.9 ± 2.9	+1.2 -0.9	-1.5 ± 3.4	+1.1 -1.9	-9.8 ± 4.8	+1.2 -3.2	0.1 ± 7.4	+2.3 -0.8
232.5	-8.0 ± 3.2	+1.1 -0.4	-8.7 ± 2.9	+1.1 -1.2	-5.2 ± 3.2	+1.9 -0.0	1.8 ± 3.9	+1.8 -0.0	-1.9 ± 5.6	+2.3 -0.2
247.5	-11.8 ± 3.4	+0.0 -5.7	-10.4 ± 3.2	+2.4 -0.0	-11.5 ± 3.5	+0.7 -0.2	-11.7 ± 4.1	+2.4 -0.0	-10.9 ± 5.1	+0.8 -1.3
262.5	-11.3 ± 3.6	+0.0 -3.4	-7.9 ± 3.5	+2.4 -1.0	-6.2 ± 3.7	+0.8 -1.5	-15.0 ± 4.3	+0.4 -1.5	-5.5 ± 4.6	+0.3 -5.1
277.5	-24.0 ± 3.9	+2.4 -0.2	-11.0 ± 3.6	+0.0 -3.3	-9.3 ± 3.9	+1.0 -0.0	-12.1 ± 4.6	+1.6 -2.1	-5.8 ± 4.9	+0.9 -0.5
292.5	-26.5 ± 4.4	+2.4 -0.0	-16.4 ± 4.2	+0.9 -1.5	-7.5 ± 4.5	+0.9 -1.7	-4.2 ± 5.2	+0.0 -7.3	-11.7 ± 6.1	+9.2 -0.0
307.5	-16.6 ± 5.0	+5.2 -1.5	-10.0 ± 4.7	+3.1 -0.0	-2.5 ± 5.3	+0.0 -4.9	1.8 ± 6.7	+0.0 -4.2	-11.7 ± 7.8	+2.6 -0.9
322.5	-18.7 ± 6.0	+4.7 -0.0	-11.8 ± 6.0	+0.0 -5.5	-17.4 ± 6.9	+7.5 -0.0	-15.0 ± 9.4	+7.9 -0.0	-14.9 ± 11.7	+6.7 -0.5
337.5	-5.7 ± 6.9	+2.7 -2.3	-6.8 ± 7.0	+4.3 -0.0	-3.0 ± 9.4	+0.0 -12.4	-8.7 ± 12.8	+9.5 -0.0	-28.7 ± 20.1	+16.1 -0.6
352.5	-1.4 ± 7.6	+1.6 -1.9	-4.3 ± 7.8	+15.1 -0.0	0.5 ± 11.2	+2.6 -3.8	-10.2 ± 15.5	+0.0 -7.2	-43.5 ± 23.1	+8.2 -0.0

TABLE X. Cross-section differences for opposite beam helicities in pb GeV⁻⁴ with their statistical and asymmetric point-to-point systematic uncertainties for the Kin2 setting, for each bin in ϕ (vertical) and $-t$ (horizontal).

ϕ (deg)	$x_B = 0.343$ $Q^2 = 1.820 \text{ GeV}^2$ $t = -0.172 \text{ GeV}^2$		$x_B = 0.368$ $Q^2 = 1.933 \text{ GeV}^2$ $t = -0.232 \text{ GeV}^2$		$x_B = 0.375$ $Q^2 = 1.964 \text{ GeV}^2$ $t = -0.278 \text{ GeV}^2$		$x_B = 0.379$ $Q^2 = 1.986 \text{ GeV}^2$ $t = -0.323 \text{ GeV}^2$		$x_B = 0.381$ $Q^2 = 1.999 \text{ GeV}^2$ $t = -0.371 \text{ GeV}^2$	
7.5	-1.0 ± 6.0	+1.0 -1.1	3.1 ± 6.1	+0.0 -4.8	1.7 ± 7.7	+0.9 -2.5	7.3 ± 11.1	+10.3 -0.0	-12.1 ± 16.0	+1.4 -5.2
22.5	12.2 ± 5.7	+2.3 -0.0	-1.9 ± 5.4	+1.9 -1.4	4.1 ± 6.2	+0.0 -7.5	-0.1 ± 9.0	+0.0 -3.7	1.1 ± 12.0	+3.6 -1.4
37.5	16.8 ± 4.9	+2.6 -0.5	12.0 ± 4.5	+1.6 -2.0	16.1 ± 5.2	+4.2 -0.0	7.9 ± 6.1	+3.2 -3.4	4.1 ± 7.5	+4.0 -0.0
52.5	15.3 ± 4.5	+1.9 -0.9	19.3 ± 4.2	+0.1 -0.9	15.0 ± 4.3	+3.2 -0.0	22.4 ± 5.1	+0.2 -1.9	7.3 ± 5.8	+4.4 -0.2
67.5	15.8 ± 4.3	+0.5 -1.2	14.4 ± 3.7	+0.1 -3.0	1.8 ± 3.6	+1.2 -1.1	9.9 ± 4.0	+0.1 -1.6	9.9 ± 4.9	+1.1 -1.1
82.5	20.5 ± 3.9	+2.0 -0.0	10.8 ± 3.2	+0.2 -3.1	10.9 ± 3.2	+2.0 -0.0	5.1 ± 3.5	+2.1 -0.0	10.8 ± 3.8	+0.0 -1.4
97.5	15.1 ± 3.6	+3.8 -0.0	8.6 ± 2.8	+2.6 -0.5	4.8 ± 2.9	+0.4 -1.7	11.3 ± 3.0	+0.6 -0.4	4.7 ± 3.5	+1.4 -0.3
112.5	6.7 ± 3.4	+0.0 -1.7	4.3 ± 2.7	+1.6 -0.7	8.6 ± 2.7	+0.2 -1.3	1.5 ± 2.7	+0.7 -0.1	10.5 ± 3.2	+1.5 -1.2
127.5	14.9 ± 3.2	+0.0 -1.1	7.2 ± 2.4	+0.4 -1.0	6.4 ± 2.3	+2.2 -0.0	12.2 ± 2.6	+0.0 -1.9	2.1 ± 2.9	+2.4 -0.0
142.5	6.9 ± 3.0	+2.4 -0.0	7.0 ± 2.3	+0.0 -0.5	6.9 ± 2.2	+0.8 -0.0	1.0 ± 2.5	+2.5 -0.0	3.7 ± 2.8	+0.0 -3.6
157.5	5.7 ± 3.0	+1.5 -0.9	6.2 ± 2.3	+1.3 -0.7	5.4 ± 2.2	+0.0 -1.1	2.7 ± 2.6	+1.4 -0.0	0.1 ± 3.1	+0.0 -1.6
172.5	0.7 ± 2.9	+2.0 -1.0	0.4 ± 2.2	+0.0 -1.5	-1.5 ± 2.2	+0.4 -1.4	-0.3 ± 2.5	+2.1 -0.4	-7.0 ± 3.8	+2.6 -0.0
187.5	-0.3 ± 2.9	+1.4 -0.0	-0.7 ± 2.2	+1.4 -0.0	-1.4 ± 2.1	+1.8 -0.5	-3.6 ± 2.7	+4.5 -0.0	2.5 ± 3.7	+2.7 -0.0
202.5	-6.5 ± 3.0	+1.6 -0.7	-1.4 ± 2.3	+0.0 -2.1	-0.5 ± 2.1	+0.0 -1.3	1.5 ± 2.6	+1.4 -0.0	0.6 ± 3.4	+0.0 -1.3
217.5	-8.1 ± 3.1	+0.0 -1.9	-2.6 ± 2.3	+0.0 -2.2	-4.6 ± 2.2	+2.4 -0.0	2.3 ± 2.6	+0.3 -0.8	0.4 ± 3.1	+1.6 -0.0
232.5	-9.2 ± 3.1	+0.4 -1.5	-6.7 ± 2.4	+0.0 -2.1	-5.0 ± 2.3	+0.0 -2.4	0.0 ± 2.7	+3.0 -0.0	-4.4 ± 2.7	+1.9 -0.9
247.5	-11.8 ± 3.2	+3.2 -0.0	-10.6 ± 2.6	+0.0 -1.1	-7.0 ± 2.8	+0.4 -0.8	-8.1 ± 3.0	+0.1 -1.6	0.4 ± 3.1	+0.0 -2.5
262.5	-17.5 ± 3.4	+3.0 -0.0	-9.2 ± 2.8	+1.9 -0.0	-11.0 ± 3.0	+1.1 -1.0	-7.1 ± 3.1	+2.7 -0.0	-2.5 ± 3.2	+2.2 -0.7
277.5	-16.0 ± 3.8	+0.5 -1.4	-15.5 ± 3.0	+0.0 -3.5	-11.9 ± 3.2	+1.8 -0.0	0.6 ± 3.5	+1.3 -0.0	-6.1 ± 3.6	+0.0 -2.1
292.5	-17.2 ± 4.0	+2.6 -0.4	-16.0 ± 3.5	+0.9 -0.0	-9.9 ± 3.5	+0.0 -1.3	-8.9 ± 4.0	+1.6 -1.5	-1.6 ± 4.4	+1.2 -1.1
307.5	-16.3 ± 4.5	+1.7 -0.6	-10.3 ± 3.9	+3.3 -0.0	-6.0 ± 4.1	+0.0 -3.9	-8.4 ± 5.1	+2.8 -0.0	-7.1 ± 5.4	+1.6 -1.9
322.5	-11.6 ± 4.9	+0.7 -1.3	-16.5 ± 4.5	+2.3 -0.0	-9.6 ± 4.8	+2.4 -0.0	-20.1 ± 6.3	+0.0 -3.6	-7.9 ± 7.6	+1.1 -3.5
337.5	-1.9 ± 5.5	+2.7 -1.0	-7.2 ± 5.5	+0.2 -2.3	-17.2 ± 6.2	+0.0 -8.0	-3.3 ± 8.8	+0.0 -6.7	-1.2 ± 10.9	+1.7 -15.4
352.5	-3.6 ± 5.9	+0.0 -2.2	-0.7 ± 6.1	+0.5 -1.1	1.8 ± 7.4	+6.3 -1.3	-2.6 ± 10.6	+3.0 -8.5	-5.1 ± 16.7	+13.3 -0.0

TABLE XI. Cross-section differences for opposite beam helicities in pb GeV⁻⁴ with their statistical and asymmetric point-to-point systematic uncertainties for the Kin3 setting, for each bin in ϕ (vertical) and $-t$ (horizontal).

ϕ (deg)	$x_B = 0.345$ $Q^2 = 2.218 \text{ GeV}^2$ $t = -0.176 \text{ GeV}^2$		$x_B = 0.363$ $Q^2 = 2.318 \text{ GeV}^2$ $t = -0.232 \text{ GeV}^2$		$x_B = 0.368$ $Q^2 = 2.348 \text{ GeV}^2$ $t = -0.279 \text{ GeV}^2$		$x_B = 0.371$ $Q^2 = 2.360 \text{ GeV}^2$ $t = -0.325 \text{ GeV}^2$		$x_B = 0.373$ $Q^2 = 2.375 \text{ GeV}^2$ $t = -0.372 \text{ GeV}^2$	
7.5	5.2 ± 5.1	+0.0 -5.4	7.4 ± 4.9	+0.2 -1.8	11.5 ± 5.9	+3.9 -0.1	1.7 ± 7.3	+2.9 -0.0	9.4 ± 10.9	+2.0 -2.5
22.5	1.8 ± 5.1	+3.6 -0.0	15.4 ± 4.6	+0.9 -1.3	8.6 ± 5.3	+1.6 -0.4	4.4 ± 6.2	+0.0 -4.3	6.4 ± 8.2	+4.6 -1.9
37.5	8.0 ± 4.7	+1.5 -0.7	8.3 ± 4.1	+1.8 -0.0	15.4 ± 4.2	+0.0 -1.9	1.9 ± 4.4	+0.0 -5.3	10.0 ± 5.3	+0.0 -3.6
52.5	16.7 ± 4.5	+5.7 -0.1	11.5 ± 3.6	+1.5 -1.5	10.5 ± 3.6	+1.5 -0.2	9.6 ± 3.8	+0.0 -2.3	21.8 ± 4.3	+1.6 -0.4
67.5	21.1 ± 4.1	+6.0 -0.0	17.1 ± 3.2	+3.7 -0.0	16.7 ± 3.2	+1.2 -0.0	15.0 ± 3.4	+0.0 -1.4	6.2 ± 3.3	+0.0 -3.5
82.5	16.0 ± 4.0	+2.1 -0.1	6.6 ± 2.9	+1.6 -0.0	11.9 ± 2.8	+2.4 -0.4	9.3 ± 2.6	+1.7 -0.2	9.3 ± 2.7	+1.0 -0.5
97.5	10.1 ± 3.5	+1.9 -0.1	12.3 ± 2.7	+0.0 -0.7	9.8 ± 2.4	+1.4 -0.0	9.9 ± 2.4	+1.3 -0.0	9.0 ± 2.4	+0.1 -1.8
112.5	20.7 ± 3.4	+0.1 -1.8	11.6 ± 2.4	+0.1 -1.3	8.0 ± 2.2	+0.0 -0.9	3.7 ± 2.2	+0.5 -0.3	-1.1 ± 2.0	+1.6 -0.0
127.5	9.3 ± 3.2	+0.9 -1.9	6.4 ± 2.3	+0.7 -1.4	3.5 ± 1.9	+0.7 -1.0	6.6 ± 2.0	+0.4 -0.0	1.6 ± 1.8	+0.1 -0.4
142.5	4.8 ± 3.1	+1.0 -0.1	5.5 ± 2.1	+0.6 -0.2	3.7 ± 2.0	+1.6 -0.0	3.6 ± 1.9	+0.0 -1.5	3.2 ± 1.8	+0.9 -0.0
157.5	-0.4 ± 3.0	+1.4 -0.0	2.7 ± 2.2	+0.9 -0.1	4.0 ± 2.0	+0.3 -0.5	5.5 ± 1.8	+0.8 -0.2	3.6 ± 1.9	+0.7 -0.0
172.5	3.3 ± 3.0	+2.9 -0.2	0.0 ± 2.0	+1.5 -0.0	-0.3 ± 2.0	+0.7 -0.1	2.7 ± 1.9	+0.1 -0.9	2.1 ± 2.0	+1.1 -0.2
187.5	-0.6 ± 2.8	+0.6 -1.4	0.2 ± 2.1	+1.2 -0.2	1.0 ± 1.9	+0.0 -1.2	-0.6 ± 1.9	+0.4 -0.5	4.4 ± 2.0	+0.0 -1.0
202.5	-2.6 ± 2.9	+0.9 -2.0	-0.7 ± 2.1	+0.4 -0.7	-1.8 ± 1.8	+0.0 -0.5	-4.2 ± 2.0	+1.1 -0.0	-0.1 ± 2.0	+0.0 -2.5
217.5	-7.5 ± 3.0	+1.1 -0.0	-5.4 ± 2.2	+0.2 -0.5	-5.1 ± 2.0	+1.3 -0.0	-5.2 ± 1.8	+0.4 -0.7	-3.5 ± 1.8	+0.8 -0.1
232.5	-13.1 ± 3.2	+3.3 -0.0	-4.2 ± 2.3	+0.5 -1.2	-4.7 ± 2.1	+0.0 -0.8	-5.2 ± 1.9	+1.4 -0.0	-4.0 ± 1.9	+0.2 -0.7
247.5	-6.9 ± 3.3	+1.7 -0.0	-9.5 ± 2.4	+0.4 -0.7	-3.8 ± 2.1	+0.9 -0.0	0.6 ± 2.1	+0.9 -0.4	-1.8 ± 2.1	+0.6 -1.0
262.5	-17.5 ± 3.6	+2.1 -0.0	-9.0 ± 2.7	+0.1 -1.4	-10.5 ± 2.4	+0.0 -3.0	-6.8 ± 2.4	+0.4 -1.7	-3.4 ± 2.3	+0.0 -1.1
277.5	-13.0 ± 3.8	+1.4 -0.7	-16.0 ± 2.8	+0.5 -1.2	-9.8 ± 2.6	+2.1 -0.0	-14.2 ± 2.7	+0.0 -1.5	-5.8 ± 2.6	+0.7 -0.3
292.5	-13.2 ± 4.2	+2.9 -0.6	-12.6 ± 3.1	+0.4 -1.8	-11.0 ± 2.9	+1.0 -0.9	-9.6 ± 3.1	+0.0 -3.6	-11.3 ± 3.1	+0.0 -1.8
307.5	-16.6 ± 4.3	+0.4 -2.1	-14.0 ± 3.5	+4.4 -0.0	-15.8 ± 3.5	+1.7 -0.5	-10.6 ± 3.6	+0.7 -0.6	-8.8 ± 3.7	+0.4 -0.5
322.5	-15.2 ± 4.6	+2.8 -0.0	-14.0 ± 3.8	+0.2 -1.5	-9.4 ± 3.8	+2.1 -0.0	-14.2 ± 4.5	+4.4 -0.0	-5.2 ± 5.1	+0.4 -2.6
337.5	-3.1 ± 4.8	+0.5 -0.4	1.4 ± 4.4	+1.1 -0.8	-5.0 ± 4.7	+0.8 -1.7	-0.5 ± 5.9	+0.7 -2.6	-8.1 ± 8.1	+3.4 -4.3
352.5	-1.2 ± 4.9	+1.1 -1.5	-1.1 ± 4.8	+4.3 -0.0	2.7 ± 5.5	+0.0 -3.8	-0.5 ± 7.3	+2.9 -1.5	7.3 ± 11.5	+2.2 -1.1

TABLE XII. Unpolarized cross sections in pb GeV⁻⁴ with their statistical and asymmetric point-to-point systematic uncertainties for the KinX2 setting, for each bin in ϕ (vertical) and $-t$ (horizontal).

ϕ (deg)	$x_B = 0.378$ $Q^2 = 2.012 \text{ GeV}^2$ $t = -0.192 \text{ GeV}^2$		$x_B = 0.392$ $Q^2 = 2.054 \text{ GeV}^2$ $t = -0.233 \text{ GeV}^2$		$x_B = 0.398$ $Q^2 = 2.074 \text{ GeV}^2$ $t = -0.279 \text{ GeV}^2$		$x_B = 0.400$ $Q^2 = 2.084 \text{ GeV}^2$ $t = -0.324 \text{ GeV}^2$		$x_B = 0.401$ $Q^2 = 2.091 \text{ GeV}^2$ $t = -0.371 \text{ GeV}^2$	
7.5	64.0 ± 6.3	+1.1 -0.9	57.0 ± 3.8	+0.1 -1.2	56.3 ± 4.4	+1.4 -1.7	50.5 ± 5.9	+2.1 -1.3	53.3 ± 9.0	+14.2 -5.3
22.5	68.2 ± 6.2	+1.8 -2.0	55.1 ± 3.6	+0.0 -2.5	45.2 ± 3.8	+0.1 -0.9	51.7 ± 5.1	+0.8 -1.7	52.0 ± 6.9	+8.6 -5.5
37.5	52.8 ± 5.6	+0.0 -4.6	48.2 ± 3.3	+0.5 -1.3	44.9 ± 3.5	+1.4 -0.5	36.2 ± 4.0	+1.0 -0.0	36.9 ± 4.8	+3.7 -7.5
52.5	52.4 ± 5.8	+0.6 -2.8	51.4 ± 3.3	+3.3 -0.1	41.2 ± 3.4	+0.0 -4.4	36.4 ± 3.8	+0.0 -2.7	33.8 ± 4.1	+3.4 -7.9
67.5	53.0 ± 5.4	+1.3 -0.5	42.0 ± 3.0	+0.0 -3.0	34.6 ± 3.0	+0.0 -1.5	30.7 ± 3.2	+0.0 -3.2	31.0 ± 3.5	+3.1 -5.1
82.5	47.3 ± 5.1	+2.3 -0.0	41.4 ± 2.9	+0.0 -3.0	30.9 ± 2.9	+3.3 -0.0	24.9 ± 3.0	+1.8 -0.0	22.0 ± 3.0	+2.2 -6.1
97.5	48.2 ± 4.9	+3.3 -0.0	32.8 ± 2.7	+0.3 -2.6	30.5 ± 2.7	+0.5 -2.0	26.4 ± 2.9	+0.4 -1.4	27.4 ± 3.2	+2.7 -5.4
112.5	46.9 ± 4.7	+4.8 -1.3	33.9 ± 2.6	+0.0 -2.9	28.9 ± 2.5	+0.0 -1.2	20.0 ± 2.5	+0.0 -1.2	24.0 ± 3.1	+3.7 -2.6
127.5	45.8 ± 4.6	+0.0 -1.5	28.0 ± 2.3	+0.0 -2.3	23.1 ± 2.2	+0.0 -3.4	24.5 ± 2.6	+0.0 -1.8	19.7 ± 3.0	+2.0 -3.5
142.5	36.5 ± 4.2	+1.0 -0.0	27.3 ± 2.3	+0.0 -1.0	23.2 ± 2.2	+0.0 -1.4	18.9 ± 2.4	+0.3 -0.7	16.2 ± 3.2	+1.6 -4.2
157.5	33.2 ± 4.0	+0.7 -1.3	27.6 ± 2.2	+0.0 -1.7	25.4 ± 2.3	+0.0 -2.8	20.0 ± 2.7	+0.0 -1.6	15.5 ± 3.6	+4.3 -1.6
172.5	36.3 ± 4.1	+0.0 -3.1	26.7 ± 2.2	+1.6 -0.3	24.2 ± 2.2	+0.0 -2.3	18.5 ± 2.6	+0.3 -1.2	15.9 ± 3.9	+1.7 -2.7
187.5	35.6 ± 4.1	+0.3 -0.8	26.6 ± 2.2	+0.2 -1.0	22.4 ± 2.1	+0.0 -0.9	16.6 ± 2.6	+0.5 -0.4	17.4 ± 4.0	+1.7 -5.2
202.5	37.7 ± 4.3	+0.0 -4.5	30.9 ± 2.3	+1.3 -0.0	20.4 ± 2.0	+0.0 -1.1	22.8 ± 2.8	+1.5 -0.3	17.2 ± 3.4	+1.7 -4.7
217.5	43.6 ± 4.5	+1.1 -1.0	28.3 ± 2.3	+0.8 -0.0	29.1 ± 2.4	+0.0 -5.0	22.1 ± 2.6	+0.0 -2.9	22.2 ± 3.2	+2.5 -3.1
232.5	38.1 ± 4.4	+0.0 -3.5	25.6 ± 2.3	+0.0 -1.5	21.6 ± 2.2	+0.0 -1.2	20.8 ± 2.6	+1.0 -0.0	17.1 ± 2.7	+3.2 -1.8
247.5	37.7 ± 4.3	+0.9 -1.8	30.5 ± 2.5	+1.7 -0.0	26.7 ± 2.5	+0.0 -3.1	28.1 ± 2.9	+0.0 -4.2	22.6 ± 3.0	+2.3 -7.0
262.5	43.4 ± 4.6	+0.0 -8.3	34.3 ± 2.7	+0.7 -1.1	30.0 ± 2.7	+0.0 -2.2	24.8 ± 2.9	+1.2 -0.2	19.5 ± 2.9	+2.4 -3.6
277.5	44.1 ± 4.9	+1.0 -0.8	34.5 ± 2.8	+0.0 -0.9	34.9 ± 2.8	+0.0 -4.2	28.2 ± 3.1	+0.4 -1.1	23.7 ± 3.1	+2.7 -3.4
292.5	50.5 ± 5.3	+2.3 -0.0	41.8 ± 3.0	+0.2 -0.6	30.5 ± 2.7	+1.4 -0.2	27.0 ± 3.0	+3.6 -0.0	27.2 ± 3.5	+3.1 -4.1
307.5	57.7 ± 5.8	+0.3 -3.4	43.2 ± 3.2	+0.0 -3.8	35.9 ± 3.0	+1.6 -0.0	39.3 ± 3.6	+0.0 -1.4	29.7 ± 3.8	+3.2 -5.8
322.5	62.1 ± 5.9	+0.9 -0.9	53.2 ± 3.5	+0.0 -2.5	41.0 ± 3.3	+0.0 -0.8	39.5 ± 4.1	+0.6 -2.2	31.6 ± 4.8	+3.2 -7.7
337.5	62.3 ± 5.9	+1.5 -0.0	53.2 ± 3.5	+2.3 -0.3	46.9 ± 3.8	+1.4 -0.7	41.4 ± 5.0	+0.9 -1.2	33.4 ± 6.4	+7.9 -3.3
352.5	65.4 ± 6.0	+0.0 -1.5	55.5 ± 3.7	+0.0 -1.5	44.0 ± 4.1	+0.3 -1.6	37.4 ± 5.5	+0.0 -9.8	43.6 ± 8.8	+7.3 -4.4

TABLE XIII. Unpolarized cross sections in pb GeV⁻⁴ with their statistical and asymmetric point-to-point systematic uncertainties for the KinX3 setting, for each bin in ϕ (vertical) and $-t$ (horizontal).

ϕ (deg)	$x_B = 0.336$ $Q^2 = 2.161 \text{ GeV}^2$ $t = -0.171 \text{ GeV}^2$		$x_B = 0.342$ $Q^2 = 2.190 \text{ GeV}^2$ $t = -0.231 \text{ GeV}^2$		$x_B = 0.343$ $Q^2 = 2.194 \text{ GeV}^2$ $t = -0.278 \text{ GeV}^2$		$x_B = 0.342$ $Q^2 = 2.191 \text{ GeV}^2$ $t = -0.324 \text{ GeV}^2$		$x_B = 0.342$ $Q^2 = 2.193 \text{ GeV}^2$ $t = -0.371 \text{ GeV}^2$	
7.5	120.7 \pm 4.7	+0.9 -0.4	100.1 \pm 7.6	+2.1 -2.5	—		—		—	
22.5	132.5 \pm 4.9	+3.7 -0.0	106.9 \pm 6.8	+4.5 -0.5	—		—		—	
37.5	118.7 \pm 4.5	+2.8 -0.0	93.9 \pm 6.1	+0.2 -1.6	58.7 \pm 7.0	+1.1 -4.3	53.8 \pm 10.1	+0.7 -9.3	68.8 \pm 21.3	+7.8 -21.5
52.5	99.8 \pm 4.1	+1.3 -1.9	76.9 \pm 5.0	+0.1 -2.7	59.3 \pm 5.8	+1.5 -1.1	48.6 \pm 7.3	+8.3 -0.3	37.1 \pm 10.4	+5.3 -13.4
67.5	88.4 \pm 3.8	+0.0 -5.5	67.7 \pm 4.5	+2.2 -1.3	54.4 \pm 5.1	+0.9 -0.9	55.8 \pm 6.2	+6.5 -0.0	40.6 \pm 7.0	+10.3 -4.1
82.5	81.4 \pm 3.6	+0.5 -0.7	55.1 \pm 3.9	+3.6 -0.0	47.8 \pm 4.2	+0.0 -2.6	34.2 \pm 4.4	+0.7 -1.8	29.0 \pm 5.0	+5.0 -3.9
97.5	62.7 \pm 3.1	+1.5 -0.8	53.8 \pm 3.7	+1.2 -0.7	36.7 \pm 3.6	+1.8 -0.0	30.9 \pm 3.8	+0.0 -1.1	27.0 \pm 4.3	+2.9 -5.6
112.5	61.3 \pm 3.0	+0.6 -1.5	40.3 \pm 3.1	+0.7 -0.7	36.5 \pm 3.3	+0.0 -1.4	28.6 \pm 3.4	+0.0 -1.2	21.0 \pm 3.5	+2.1 -5.2
127.5	58.1 \pm 3.0	+0.5 -1.9	37.3 \pm 2.8	+0.0 -3.7	25.9 \pm 2.6	+0.0 -1.2	27.6 \pm 3.1	+0.8 -0.6	18.8 \pm 2.9	+2.0 -5.3
142.5	52.9 \pm 2.7	+2.8 -0.0	33.6 \pm 2.7	+0.0 -1.7	27.3 \pm 2.7	+1.0 -0.5	26.7 \pm 3.0	+0.0 -2.0	17.9 \pm 2.8	+2.3 -2.5
157.5	43.9 \pm 2.6	+0.2 -0.8	34.4 \pm 2.8	+0.7 -0.6	29.2 \pm 2.8	+0.0 -2.8	24.8 \pm 2.8	+1.0 -0.0	18.7 \pm 3.0	+3.5 -1.9
172.5	45.4 \pm 2.5	+0.0 -1.2	31.9 \pm 2.6	+0.2 -0.6	29.9 \pm 2.8	+0.3 -0.2	23.5 \pm 2.8	+1.7 -0.0	17.2 \pm 3.2	+2.8 -2.0
187.5	41.0 \pm 2.4	+0.9 -0.1	32.6 \pm 2.7	+0.5 -0.3	27.7 \pm 2.8	+0.1 -2.1	21.6 \pm 2.8	+1.4 -0.0	16.2 \pm 2.9	+3.8 -1.6
202.5	44.2 \pm 2.5	+0.9 -0.9	37.1 \pm 2.8	+0.0 -1.6	23.7 \pm 2.6	+0.1 -0.5	29.2 \pm 3.0	+0.0 -3.1	21.3 \pm 3.0	+4.2 -2.6
217.5	51.6 \pm 2.7	+0.8 -0.8	39.5 \pm 2.9	+0.1 -2.0	31.2 \pm 2.8	+1.1 -0.7	23.0 \pm 2.7	+0.0 -2.1	17.7 \pm 2.8	+1.9 -2.6
232.5	57.7 \pm 2.9	+0.6 -0.8	41.5 \pm 3.0	+1.1 -0.0	33.4 \pm 2.9	+0.0 -1.9	29.3 \pm 3.0	+0.0 -0.9	24.2 \pm 3.0	+2.4 -3.7
247.5	56.9 \pm 2.9	+0.1 -2.3	43.0 \pm 3.1	+1.4 -0.0	30.9 \pm 3.0	+1.5 -0.4	21.4 \pm 3.1	+0.5 -0.7	22.5 \pm 3.4	+2.7 -6.2
262.5	69.3 \pm 3.2	+0.0 -3.7	50.9 \pm 3.5	+0.0 -0.8	36.4 \pm 3.4	+0.7 -1.2	30.4 \pm 3.9	+0.6 -0.3	18.1 \pm 3.6	+1.8 -4.4
277.5	77.0 \pm 3.5	+0.7 -0.4	54.2 \pm 3.7	+0.5 -2.0	48.5 \pm 3.9	+0.4 -1.8	43.6 \pm 4.4	+0.1 -3.2	32.8 \pm 4.5	+3.3 -5.8
292.5	95.5 \pm 3.9	+2.5 -0.0	67.8 \pm 4.2	+0.0 -1.4	51.6 \pm 4.3	+3.3 -0.2	55.0 \pm 5.6	+0.9 -1.2	35.5 \pm 6.3	+5.6 -5.5
307.5	103.1 \pm 4.0	+4.8 -0.0	84.2 \pm 4.8	+0.0 -6.6	60.3 \pm 5.4	+0.2 -3.9	39.5 \pm 6.2	+0.5 -2.9	43.1 \pm 8.7	+8.4 -4.6
322.5	114.1 \pm 4.4	+0.4 -1.7	90.7 \pm 5.5	+0.0 -6.5	62.2 \pm 6.4	+0.0 -8.6	70.1 \pm 9.9	+0.0 -7.6	49.6 \pm 15.5	+8.6 -15.8
337.5	117.8 \pm 4.6	+2.0 -0.6	83.8 \pm 6.6	+0.0 -5.6	—		—		—	
352.5	120.3 \pm 4.8	+0.2 -0.7	87.9 \pm 7.4	+0.0 -10.9	—		—		—	

TABLE XIV. Cross-section differences for opposite beam helicities in pb GeV⁻⁴ with their statistical and asymmetric point-to-point systematic uncertainties for the KinX2 setting, for each bin in ϕ (vertical) and $-t$ (horizontal).

ϕ (deg)	$x_B = 0.378$ $Q^2 = 2.012 \text{ GeV}^2$ $t = -0.192 \text{ GeV}^2$		$x_B = 0.392$ $Q^2 = 2.054 \text{ GeV}^2$ $t = -0.233 \text{ GeV}^2$		$x_B = 0.398$ $Q^2 = 2.074 \text{ GeV}^2$ $t = -0.279 \text{ GeV}^2$		$x_B = 0.400$ $Q^2 = 2.084 \text{ GeV}^2$ $t = -0.324 \text{ GeV}^2$		$x_B = 0.401$ $Q^2 = 2.091 \text{ GeV}^2$ $t = -0.371 \text{ GeV}^2$	
7.5	-2.8 ± 9.1	+4.3 -2.5	-2.4 ± 5.1	+0.0 -3.5	-0.2 ± 5.9	+0.8 -1.0	3.8 ± 7.7	+6.9 -0.0	-9.0 ± 11.9	+1.1 -3.2
22.5	2.7 ± 8.8	+0.7 -5.6	-0.6 ± 4.8	+0.5 -2.4	1.4 ± 5.0	+0.0 -4.0	-1.2 ± 6.8	+0.0 -3.5	0.9 ± 9.2	+2.7 -1.1
37.5	-6.0 ± 7.9	+3.6 -0.0	4.1 ± 4.4	+1.6 -1.1	13.3 ± 4.6	+4.3 -0.0	5.5 ± 5.2	+2.0 -3.0	0.4 ± 6.2	+1.4 -0.0
52.5	7.2 ± 8.1	+2.6 -2.5	13.7 ± 4.5	+2.6 -0.4	11.2 ± 4.4	+2.3 -0.0	12.3 ± 4.8	+1.9 -1.2	8.3 ± 5.3	+2.0 -0.4
67.5	-5.9 ± 7.7	+2.2 -0.7	5.0 ± 4.1	+1.1 -0.0	6.0 ± 3.9	+0.6 -1.4	8.4 ± 4.2	+0.4 -2.0	5.9 ± 4.5	+0.6 -1.0
82.5	18.2 ± 7.2	+0.7 -1.9	12.4 ± 4.0	+0.1 -3.3	10.6 ± 3.7	+0.2 -1.8	3.5 ± 3.7	+0.0 -1.4	7.9 ± 3.8	+0.0 -1.7
97.5	-0.8 ± 7.3	+4.8 -0.6	4.6 ± 3.6	+3.2 -0.0	4.2 ± 3.5	+0.2 -1.8	7.2 ± 3.7	+1.8 -0.0	3.3 ± 4.0	+0.9 -0.2
112.5	14.0 ± 6.7	+2.8 -0.0	-0.6 ± 3.6	+0.0 -2.5	7.2 ± 3.3	+1.0 -1.1	-1.1 ± 3.1	+2.4 -0.0	6.5 ± 3.9	+1.8 -0.5
127.5	-0.3 ± 6.7	+2.9 -0.7	3.0 ± 3.1	+0.0 -1.6	7.3 ± 2.8	+3.5 -0.0	11.1 ± 3.2	+0.0 -4.8	-1.5 ± 3.6	+2.9 -0.0
142.5	1.6 ± 6.0	+0.0 -4.0	4.8 ± 3.1	+0.2 -1.7	4.8 ± 2.8	+2.9 -0.0	3.3 ± 3.0	+1.8 -0.0	6.1 ± 3.8	+0.0 -3.8
157.5	-9.0 ± 5.9	+2.5 -2.4	4.9 ± 3.0	+0.1 -1.2	5.6 ± 2.9	+2.1 -0.8	5.3 ± 3.3	+0.1 -1.5	-2.7 ± 4.2	+0.6 -0.6
172.5	-4.9 ± 5.9	+0.0 -3.1	1.0 ± 3.0	+0.8 -1.5	0.6 ± 2.8	+1.5 -0.1	-0.7 ± 3.2	+1.5 -0.3	-8.4 ± 4.5	+0.1 -2.0
187.5	-2.7 ± 6.0	+1.4 -3.3	2.5 ± 3.0	+0.6 -1.1	1.4 ± 2.7	+0.4 -1.1	-0.5 ± 3.2	+2.2 -0.7	2.9 ± 4.7	+4.7 -0.0
202.5	6.7 ± 6.3	+0.9 -4.1	-1.0 ± 3.2	+0.0 -3.2	1.7 ± 2.6	+0.0 -1.4	1.0 ± 3.4	+1.8 -0.0	3.8 ± 4.1	+0.0 -1.4
217.5	-0.8 ± 6.6	+0.5 -10.0	1.3 ± 3.1	+0.0 -2.6	-5.0 ± 3.1	+1.9 -0.0	-1.2 ± 3.2	+0.0 -1.6	0.8 ± 3.9	+2.6 -0.0
232.5	-8.7 ± 6.3	+2.6 -0.0	-1.1 ± 3.1	+0.0 -4.4	-4.3 ± 2.8	+0.3 -1.0	0.3 ± 3.2	+3.2 -0.7	-6.6 ± 3.2	+0.5 -0.2
247.5	-12.9 ± 6.2	+0.5 -4.0	-10.3 ± 3.4	+0.0 -2.8	-6.8 ± 3.2	+0.4 -0.2	-6.6 ± 3.7	+1.6 -1.2	-3.0 ± 3.7	+0.0 -3.2
262.5	-4.0 ± 6.5	+0.3 -3.8	-2.4 ± 3.7	+2.5 -0.0	-8.4 ± 3.5	+1.9 -0.4	-7.9 ± 3.6	+1.3 -1.1	-0.1 ± 3.7	+3.5 -0.4
277.5	-1.2 ± 6.9	+0.6 -2.9	-12.5 ± 3.7	+0.0 -3.0	-9.4 ± 3.7	+2.4 -0.6	4.4 ± 3.8	+3.4 -0.0	-3.2 ± 3.9	+0.4 -1.0
292.5	-6.0 ± 7.4	+0.6 -1.6	-13.8 ± 4.1	+2.6 -0.0	-7.3 ± 3.5	+1.5 -0.3	-4.5 ± 3.9	+0.6 -0.7	-7.4 ± 4.4	+2.4 -0.6
307.5	0.6 ± 8.3	+1.7 -5.6	-5.3 ± 4.2	+5.0 -0.0	-6.2 ± 4.0	+0.5 -1.8	-4.1 ± 4.8	+4.7 -0.2	-7.2 ± 4.9	+0.8 -1.7
322.5	-2.6 ± 8.3	+0.0 -8.0	-15.7 ± 4.6	+1.1 -1.2	-10.4 ± 4.3	+1.0 -1.1	-14.6 ± 5.3	+0.0 -3.9	-5.8 ± 6.2	+1.0 -2.7
337.5	-14.3 ± 8.6	+3.4 -1.6	-1.8 ± 4.8	+0.8 -0.8	-14.9 ± 5.0	+0.0 -4.6	-0.2 ± 6.5	+0.0 -4.5	-1.0 ± 8.4	+1.2 -10.7
352.5	4.7 ± 8.7	+7.7 -0.0	-3.1 ± 5.0	+0.9 -0.8	1.0 ± 5.6	+4.9 -0.7	-1.7 ± 7.3	+2.0 -5.9	-3.8 ± 12.5	+9.3 -0.0

TABLE XV. Cross-section differences for opposite beam helicities in pb GeV⁻⁴ with their statistical and asymmetric point-to-point systematic uncertainties for the KinX3 setting, for each bin in ϕ (vertical) and $-t$ (horizontal).

ϕ (deg)	$x_B = 0.336$ $Q^2 = 2.161 \text{ GeV}^2$ $t = -0.171 \text{ GeV}^2$		$x_B = 0.342$ $Q^2 = 2.190 \text{ GeV}^2$ $t = -0.231 \text{ GeV}^2$		$x_B = 0.343$ $Q^2 = 2.194 \text{ GeV}^2$ $t = -0.278 \text{ GeV}^2$		$x_B = 0.342$ $Q^2 = 2.191 \text{ GeV}^2$ $t = -0.324 \text{ GeV}^2$		$x_B = 0.342$ $Q^2 = 2.193 \text{ GeV}^2$ $t = -0.371 \text{ GeV}^2$	
7.5	7.3 ± 6.5	+0.0 -8.0	14.4 ± 10.1	+0.3 -6.4	-		-		-	
22.5	1.7 ± 6.7	+2.8 -1.8	32.4 ± 8.9	+0.3 -3.2	-		-		-	
37.5	7.6 ± 6.1	+2.8 -0.4	16.2 ± 7.9	+8.5 -0.0	16.8 ± 8.7	+0.0 -7.4	5.3 ± 11.9	+2.6 -3.5	-23.9 ± 23.3	+5.6 -11.7
52.5	22.5 ± 5.6	+9.3 -0.0	17.7 ± 6.4	+3.3 -2.7	11.7 ± 7.4	+6.6 -1.6	16.5 ± 9.0	+0.0 -4.3	7.7 ± 12.1	+10.5 -0.0
67.5	25.8 ± 5.3	+5.7 -0.0	20.2 ± 5.8	+2.9 -1.6	12.5 ± 6.5	+0.0 -4.6	17.9 ± 8.0	+0.0 -5.4	5.9 ± 8.6	+0.2 -4.5
82.5	14.9 ± 5.1	+3.2 -0.4	8.7 ± 5.0	+0.7 -3.4	17.9 ± 5.4	+0.9 -0.9	13.0 ± 5.5	+4.5 -0.7	0.2 ± 6.1	+3.9 -1.3
97.5	14.2 ± 4.5	+3.3 -0.0	21.1 ± 4.8	+0.4 -0.8	13.5 ± 4.6	+2.4 -0.0	12.5 ± 4.9	+5.0 -0.2	12.7 ± 5.3	+0.9 -3.4
112.5	23.3 ± 4.2	+0.0 -2.6	18.6 ± 4.0	+1.4 -0.6	11.3 ± 4.2	+0.2 -2.0	1.5 ± 4.2	+3.8 -0.0	-3.2 ± 4.3	+1.0 -1.0
127.5	11.3 ± 4.2	+0.8 -3.8	11.5 ± 3.6	+0.1 -4.6	2.3 ± 3.3	+1.2 -0.8	9.5 ± 3.9	+0.1 -0.7	5.1 ± 3.6	+0.1 -2.0
142.5	7.0 ± 3.9	+1.2 -0.2	10.7 ± 3.5	+1.6 -0.7	5.7 ± 3.4	+1.7 -0.0	7.8 ± 3.7	+0.0 -1.1	4.5 ± 3.5	+0.6 -1.9
157.5	-3.1 ± 3.7	+1.2 -0.0	6.4 ± 3.5	+0.2 -0.9	4.1 ± 3.5	+0.2 -3.0	7.2 ± 3.6	+0.0 -1.0	3.8 ± 3.7	+0.5 -0.4
172.5	4.5 ± 3.7	+4.0 -0.3	1.4 ± 3.4	+3.6 -0.0	0.8 ± 3.6	+0.5 -0.9	0.8 ± 3.4	+0.4 -1.9	-0.2 ± 3.9	+3.4 -0.0
187.5	-1.7 ± 3.5	+0.1 -2.5	-1.2 ± 3.4	+2.2 -0.5	2.5 ± 3.6	+0.3 -1.9	-0.2 ± 3.4	+0.0 -1.0	8.5 ± 3.6	+1.3 -0.3
202.5	-2.1 ± 3.6	+1.8 -1.3	1.4 ± 3.6	+0.5 -1.1	-3.3 ± 3.3	+0.9 -0.1	-9.4 ± 3.8	+2.5 -0.0	0.5 ± 3.8	+0.0 -3.6
217.5	-9.2 ± 3.9	+0.6 -0.7	-9.5 ± 3.7	+0.0 -2.2	-6.3 ± 3.6	+1.4 -0.0	-7.3 ± 3.4	+1.2 -0.0	-4.1 ± 3.4	+2.6 -0.2
232.5	-13.5 ± 4.1	+2.6 -0.0	-3.8 ± 3.8	+0.0 -2.1	-3.4 ± 3.7	+0.6 -0.5	-3.9 ± 3.8	+0.9 -0.8	-7.9 ± 3.8	+1.3 -0.2
247.5	-6.8 ± 4.1	+2.4 -0.0	-8.4 ± 4.0	+0.0 -1.8	-3.6 ± 3.8	+0.2 -0.9	-0.6 ± 3.8	+1.8 -0.0	-4.9 ± 4.2	+2.1 -0.5
262.5	-22.7 ± 4.5	+2.2 -0.8	-11.2 ± 4.5	+0.9 -0.7	-19.1 ± 4.3	+0.0 -5.1	-3.0 ± 4.8	+0.7 -2.0	-0.9 ± 4.4	+2.0 -0.1
277.5	-19.9 ± 4.8	+0.4 -1.4	-22.1 ± 4.8	+2.2 -0.8	-14.7 ± 5.0	+5.1 -0.0	-19.4 ± 5.6	+0.0 -3.1	-4.8 ± 5.7	+0.0 -2.5
292.5	-17.6 ± 5.4	+2.3 -0.5	-21.5 ± 5.4	+0.8 -1.6	-16.1 ± 5.5	+0.5 -2.7	-20.0 ± 7.1	+1.5 -2.7	-15.4 ± 7.7	+0.0 -3.8
307.5	-23.2 ± 5.5	+0.0 -4.8	-27.4 ± 6.3	+7.9 -0.0	-3.2 ± 6.9	+1.1 -3.4	-21.8 ± 7.8	+2.2 -1.8	-9.7 ± 10.6	+2.2 -1.5
322.5	-19.2 ± 5.9	+3.5 -0.0	-17.0 ± 7.2	+0.0 -2.9	-2.6 ± 8.1	+3.4 -0.0	-26.5 ± 12.3	+13.9 -0.0	-19.9 ± 17.6	+0.0 -25.8
337.5	-4.7 ± 6.2	+0.4 -0.9	5.9 ± 8.3	+0.0 -5.4	-		-		-	
352.5	-4.1 ± 6.5	+1.8 -3.4	6.6 ± 9.4	+2.5 -2.0	-		-		-	

VIII. SUMMARY AND CONCLUSION

We report final results for E00-110, the first dedicated DVCS experiment, which ran in Hall A of Jefferson Lab. Using new developments in the parametrization of the DVCS reaction, we extracted cross sections including for the first time an evaluation of the DVCS squared amplitude. We showed results for the unpolarized DVCS cross section at two different Q^2 values and two different x_B values, thanks to a new analysis which allowed for a reliable evaluation of the π^0 background in all these kinematics. The effective CFFs used to describe the kinematical dependence of the helicity-dependent and helicity-independent cross section show no Q^2 dependence, compatible with the dominance of the leading-twist diagram in this region of moderate Q^2 and high x_B . Our results were compared with various models based on the GPDs framework. A relative good agreement was found with the KM10a parametrization. However, this model does not fully match the behavior of the unpolarized cross section for $\phi \sim 180^\circ$. We showed that adding an empirical estimate of the target-mass and finite- t corrections to the KM10a model improved the agreement with our data significantly, which may hint at the necessity to include such effects in the analysis of moderate- Q^2 data, relevant for current and future Jefferson Lab experiments. At any rate, the accuracy of the unpolarized cross-section data around $\phi = 180^\circ$ seems absolutely critical to disentangle all contributions of the cross section.

The significant deviation of the DVCS cross section observed in this experiment with respect to the BH contri-

bution motivated the subsequent experiment E07-007 [32], currently under analysis. Its goal is to investigate the nature of this deviation by using the beam-energy dependence of the different terms of the cross section. Indeed, the BH-DVCS interference contribution has a $\sim E_b^3$ dependence, whereas the DVCS² varies as $\sim E_b^2$. In a way similar to a Rosenbluth separation, by measuring the DVCS cross section at exactly the same kinematics but different beam energies, one will be able to tell if this deviation is mainly attributable to the DVCS², the BH-DVCS interference terms or higher-twist terms. This high-accuracy measurement of the cross section at two beam energies will set stringent constraints on GPD models.

ACKNOWLEDGMENTS

We acknowledge essential work of the JLab accelerator staff and the Hall A technical staff. We also thank V. Braun for many informative discussions and B. M. Pirnay for the access to his TMC code. This work was supported by the Department of Energy (DOE), the National Science Foundation, the French Centre National de la Recherche Scientifique, the Agence Nationale de la Recherche, the Commissariat à l'énergie atomique et aux énergies alternatives and P2IO Laboratory of Excellence. Jefferson Science Associates, LLC, operates Jefferson Lab for the US DOE under US DOE Contract No. DOE-AC05-06OR23177.

-
- [1] D. Müller, D. Robaschik, B. Geyer, F. M. Dittes, and J. Horejsi, *Fortschr. Phys.* **42**, 101 (1994).
 - [2] X. Ji, *Phys. Rev. D* **55**, 7114 (1997).
 - [3] X. Ji, *Phys. Rev. Lett.* **78**, 610 (1997).
 - [4] X. Ji, W. Melnitchouk, and X. Song, *Phys. Rev. D* **56**, 5511 (1997).
 - [5] A. V. Radyushkin, *Phys. Rev. D* **56**, 5524 (1997).
 - [6] A. V. Radyushkin, *Phys. Lett. B* **380**, 417 (1996).
 - [7] J. C. Collins, L. Frankfurt, and M. Strikman, *Phys. Rev. D* **56**, 2982 (1997).
 - [8] X. Ji and J. Osborne, *Phys. Rev. D* **58**, 094018 (1998).
 - [9] A. V. Belitsky, D. Müller, and A. Kirchner, *Nucl. Phys. B* **629**, 323 (2002).
 - [10] M. Burkardt, [arXiv:0711.1881](https://arxiv.org/abs/0711.1881) [hep-ph].
 - [11] O. V. Teryaev, [arXiv:hep-ph/0510031](https://arxiv.org/abs/hep-ph/0510031).
 - [12] I. V. Anikin and O. V. Teryaev, *Phys. Rev. D* **76**, 056007 (2007).
 - [13] I. V. Anikin and O. V. Teryaev, *Fizika B* **17**, 151 (2008).
 - [14] M. Diehl and D. Y. Ivanov, [arXiv:0712.3533](https://arxiv.org/abs/0712.3533) [hep-ph].
 - [15] M. V. Polyakov and C. Weiss, *Phys. Rev. D* **60**, 114017 (1999).
 - [16] A. Airapetian *et al.* (HERMES Collaboration), *Phys. Rev. Lett.* **87**, 182001 (2001).
 - [17] S. Stepanyan *et al.* (CLAS Collaboration), *Phys. Rev. Lett.* **87**, 182002 (2001).
 - [18] C. Adloff *et al.* (H1 Collaboration), *Phys. Lett. B* **517**, 47 (2001).
 - [19] S. Chekanov *et al.* (ZEUS Collaboration), *Phys. Lett. B* **573**, 46 (2003).
 - [20] A. Aktas *et al.* (H1 Collaboration), *Eur. Phys. J. C* **44**, 1 (2005).
 - [21] F. D. Aaron *et al.* (H1 Collaboration), *Phys. Lett. B* **659**, 796 (2008).
 - [22] S. Chekanov *et al.* (ZEUS Collaboration), *J. High Energy Phys.* **05** (2009) 108.
 - [23] F. D. Aaron *et al.* (H1 Collaboration), *Phys. Lett. B* **681**, 391 (2009).
 - [24] A. Airapetian *et al.* (HERMES Collaboration), *J. High Energy Phys.* **06** (2010) 019.
 - [25] A. Airapetian *et al.* (HERMES Collaboration), *J. High Energy Phys.* **06** (2008) 066.
 - [26] A. Airapetian *et al.* (HERMES Collaboration), *Phys. Lett. B* **704**, 15 (2011).
 - [27] A. Airapetian *et al.* (HERMES Collaboration), *Phys. Rev. D* **75**, 011103 (2007).
 - [28] A. Airapetian *et al.* (HERMES Collaboration), *J. High Energy Phys.* **10** (2012) 042.
 - [29] A. Airapetian *et al.* (HERMES Collaboration), *J. High Energy Phys.* **07** (2012) 032.
 - [30] C. Muñoz Camacho *et al.* (Jefferson Lab Hall A Collaboration, Hall A DVCS Collaboration), *Phys. Rev. Lett.* **97**, 262002 (2006).
 - [31] M. Mazouz *et al.* (Jefferson Lab Hall A Collaboration), *Phys. Rev. Lett.* **99**, 242501 (2007).
 - [32] P. Bertin, C. E. Hyde, C. Muñoz Camacho, J. Roche *et al.* (Jefferson Lab Hall A Collaboration), E07-007, (2007), JLab Experiment E07-007, Separation of Deeply Virtual Photon and pi-0 Electroproduction Observables of Unpolarized Protons.

- [33] A. Camsonne, C. E. Hyde, M. Mazouz, C. Muñoz Camacho, J. Roche *et al.* (Jefferson Lab Hall A Collaboration), E08-025, (2008), JLab Experiment E08-025, Measurement of the Deeply Virtual Compton Scattering off the Neutron.
- [34] F.-X. Girod *et al.* (CLAS Collaboration), *Phys. Rev. Lett.* **100**, 162002 (2008).
- [35] S. Chen *et al.* (CLAS Collaboration), *Phys. Rev. Lett.* **97**, 072002 (2006).
- [36] E. Seder, A. Biselli, S. Pisano, and S. Niccolai (CLAS Collaboration), *Phys. Rev. Lett.* **114**, 032001 (2015).
- [37] S. Pisano *et al.* (CLAS Collaboration), *Phys. Rev. D* **91**, 052014 (2015).
- [38] J. Roche *et al.*, [arXiv:nucl-ex/0609015](https://arxiv.org/abs/nucl-ex/0609015).
- [39] A. Bacchetta, U. D'Alesio, M. Diehl, and C. A. Miller, *Phys. Rev. D* **70**, 117504 (2004).
- [40] M. Diehl, T. Gousset, B. Pire, and J. P. Ralston, *Phys. Lett. B* **411**, 193 (1997).
- [41] A. V. Belitsky and D. Müller, *Phys. Rev. D* **82**, 074010 (2010).
- [42] P. Bertin, C. E. Hyde, R. Ransome, F. Sabatié *et al.* (Jefferson Lab Hall A Collaboration), E00-110, (2000), JLab Experiment E00-110, Deeply Virtual Compton Scattering at 6 GeV.
- [43] J. Alcorn *et al.*, *Nucl. Instrum. Methods A* **522**, 294 (2004).
- [44] J. Berthot and P. Vernin, *Nucl. Phys. News* **9**, 12 (1999).
- [45] M. Baylac *et al.*, *Phys. Lett. B* **539**, 8 (2002).
- [46] R. Suleiman, *Hall A Cryogenic and Dummy Targets Information*, Technical Report TN-98-007, JLab, 1998.
- [47] M. Mazouz, *Exploration de la diffusion Compton profondément virtuelle sur le neutron dans le Hall A au Jefferson Laboratory*, Ph.D. thesis, Université Joseph Fourier, Grenoble, France, 2006.
- [48] M. Mazouz and E. Voutier, JLab Technical Note JLAB-05-033, 2005.
- [49] F. Feinstein, *Nucl. Instrum. Methods A* **504**, 258 (2003).
- [50] F. Druillolle *et al.* (ANTARES Collaboration), *IEEE Trans. Nucl. Sci.* **49**, 1122 (2002).
- [51] M. Rvachev, *Effective Use of Hall A Spectrometers with R-Functions*, Technical Report Jlab-TN-01-055, JLab, 2001.
- [52] V. Breton *et al.*, *Nucl. Instrum. Methods A* **362**, 478 (1995).
- [53] T. C. Awes, F. E. Obenshain, F. Plasil, S. Saini, S. P. Sorensen *et al.*, *Nucl. Instrum. Methods A* **311**, 130 (1992).
- [54] R. De Masi *et al.* (CLAS Collaboration), *Phys. Rev. C* **77**, 042201 (2008).
- [55] M. Aghasyan, H. Avakian, P. Rossi, E. De Sanctis, D. Hasch *et al.* (CLAS Collaboration), *Phys. Lett. B* **704**, 397 (2011).
- [56] M. Vanderhaeghen, J. M. Friedrich, D. Lhuillier, D. Marchand, L. Van Hooft, and J. Van de Wiele, *Phys. Rev. C* **62**, 025501 (2000).
- [57] V. V. Bytev, E. A. Kuraev, and E. Tomasi-Gustafsson, *Phys. Rev. C* **77**, 055205 (2008).
- [58] A. V. Afanasev, M. I. Konchatnij, and N. P. Merenkov, *J. Exp. Theor. Phys.* **102**, 220 (2006).
- [59] I. Akushevich and A. Ilyichev, *Phys. Rev. D* **85**, 053008 (2012).
- [60] L. W. Mo and Y. S. Tsai, *Rev. Mod. Phys.* **41**, 205 (1969).
- [61] Y. S. Tsai, *Rev. Mod. Phys.* **46**, 815 (1974).
- [62] M. Vanderhaeghen, D. Lhuillier, and P. A. M. Guichon (private communication).
- [63] P. A. M. Guichon and M. Vanderhaeghen, *Prog. Part. Nucl. Phys.* **41**, 125 (1998).
- [64] C. E. Hyde, *Non-Factorized Form of Radiative Corrections*, Technical Report JLAB-TN-15-023, JLab, 2015.
- [65] K. Goeke, M. V. Polyakov, and M. Vanderhaeghen, *Prog. Part. Nucl. Phys.* **47**, 401 (2001).
- [66] P. Kroll, H. Moutarde, and F. Sabatié, *Eur. Phys. J. C* **73**, 2278 (2013).
- [67] K. Kumerički and D. Müller, *Nucl. Phys. B* **841**, 1 (2010).
- [68] V. M. Braun, A. N. Manashov, and B. Pirnay, *Phys. Rev. Lett.* **109**, 242001 (2012).
- [69] V. M. Braun, A. N. Manashov, D. Müller, and B. M. Pirnay, *Phys. Rev. D* **89**, 074022 (2014).
- [70] V. M. Braun, A. N. Manashov, D. Müller, and B. Pirnay, *PoS DIS2014*, 225 (2014).
- [71] V. M. Braun (private communication).