

Code 1
Fresh dead

Code 2
Moderately
decomposed
(2 days)

Code 3
Severely
decomposed
(4 days)

Code 5
Bones only
(6 days)



Figure A1. Images of Turtle 1 at various condition code stages and the minimum number of days to reach that stage.

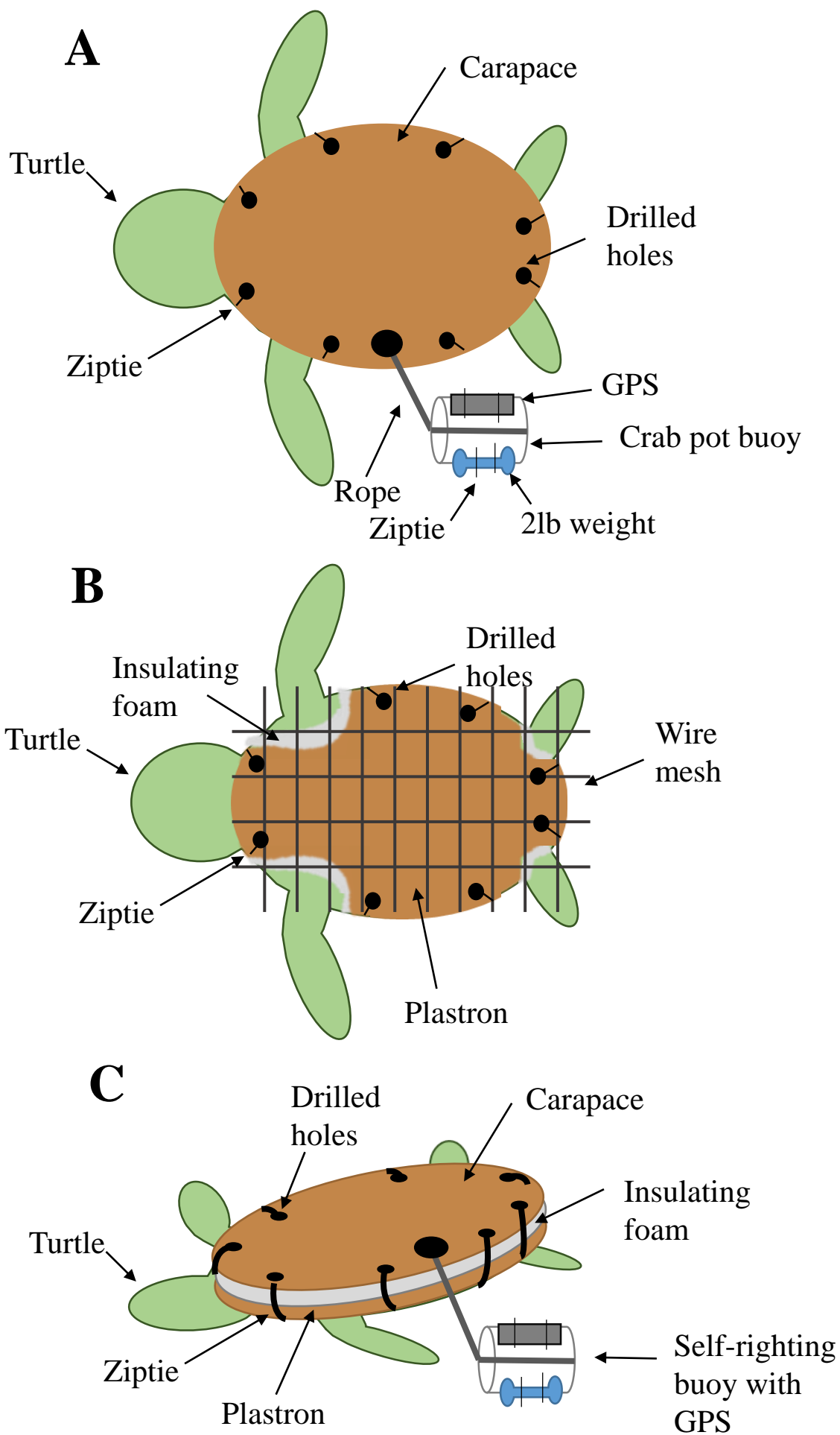
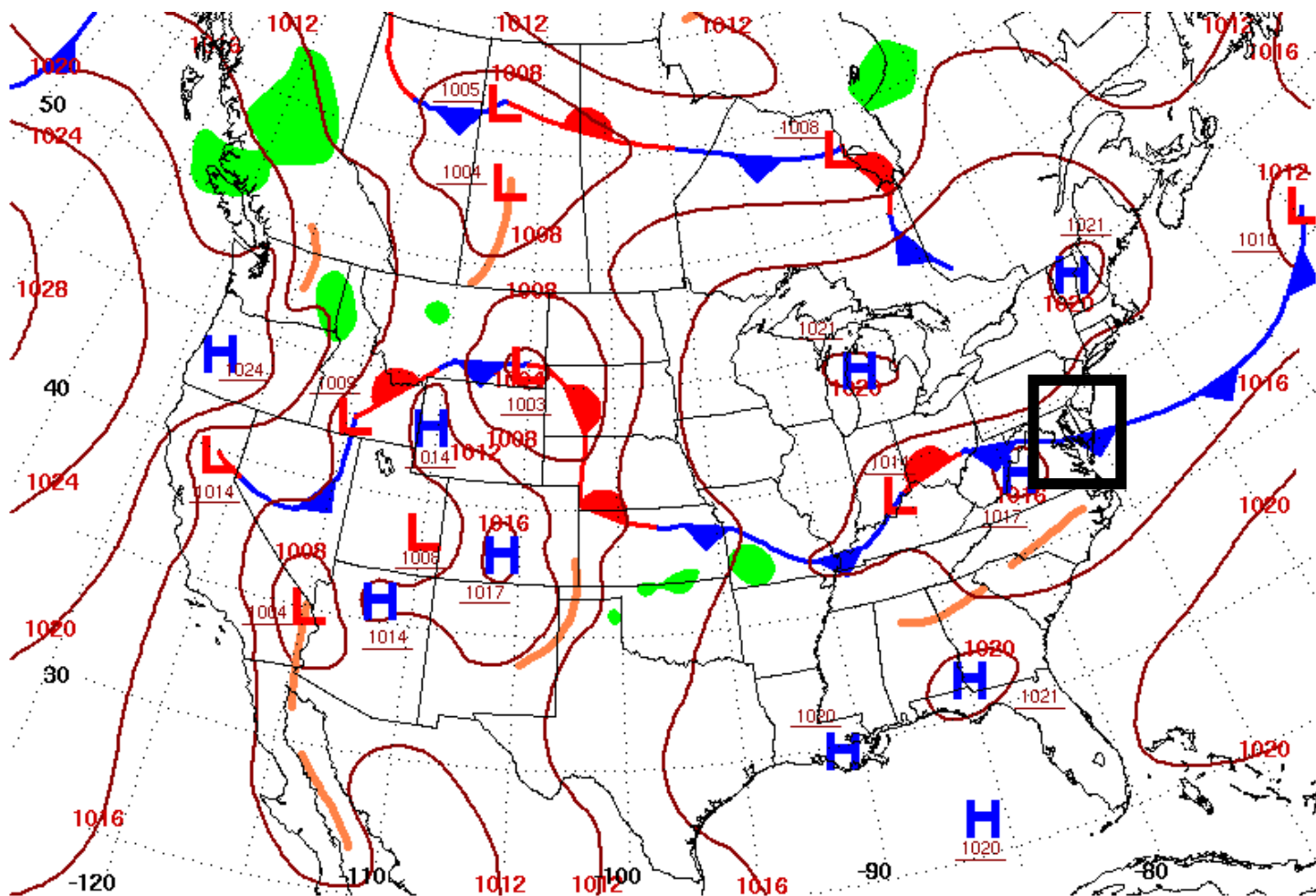


Figure A2. Schematic of sea turtle carcass drifter, including (A) carapace view, (B) plastron view, and (C) side-profile.



Figure A3. Self-righting buoy attachment with GPS for wood-foam and turtle carcass drifters.



Surface Weather Map at 7:00 A.M. E.S.T.

Figure A4. NOAA National Weather Service daily weather map from July 24, 2016 depicting the presence of a weather front moving through the study site of deployment 2 (black box). Available from:

http://www.wpc.ncep.noaa.gov/dailywxmap/index_20160624.html.

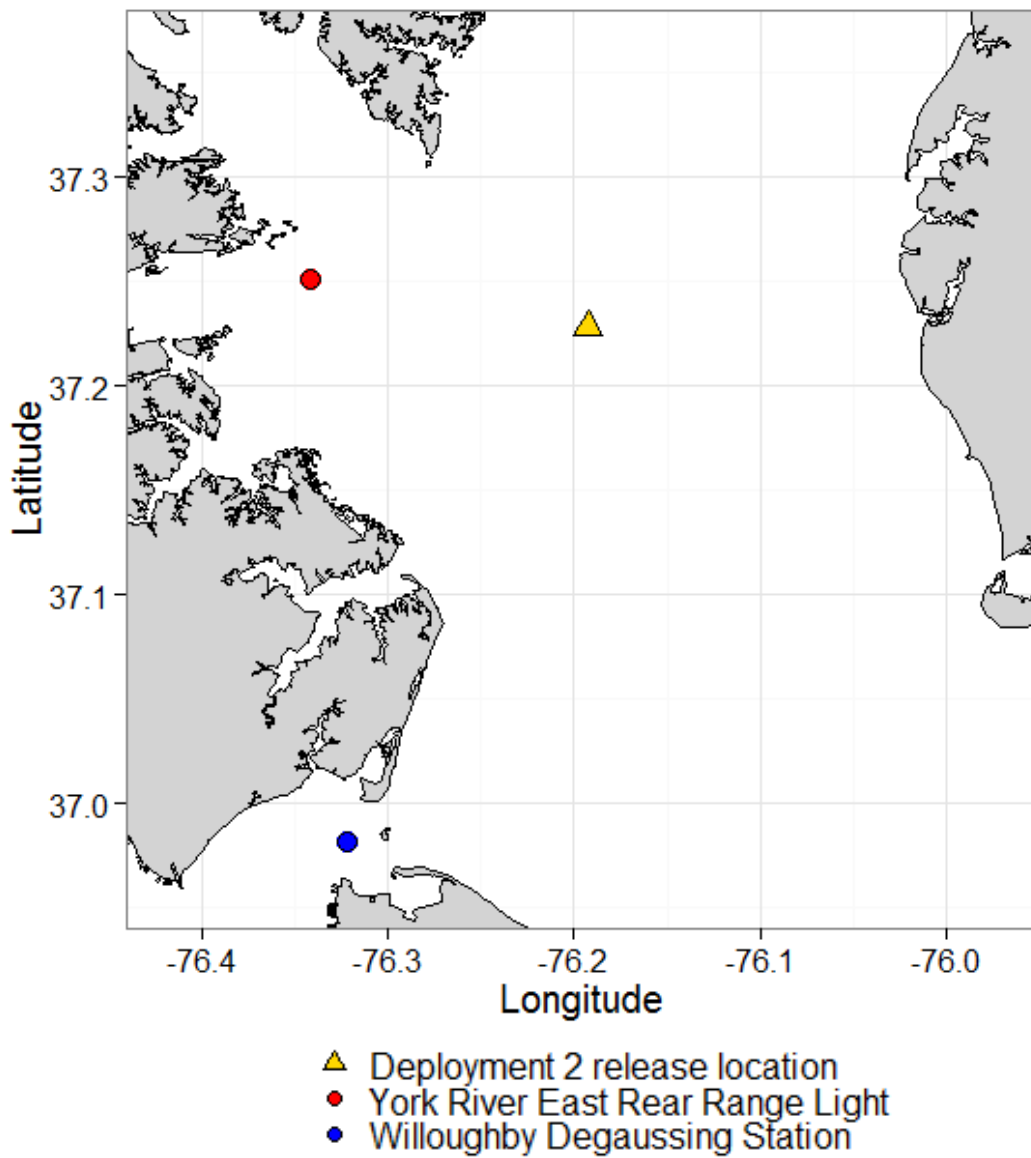


Figure A5. Locations of monitoring stations 8637611 York River East Rear Range Light (red circle), 8638614 Willoughby Degaussing Station (blue circle), and deployment 2 release location (yellow triangle).

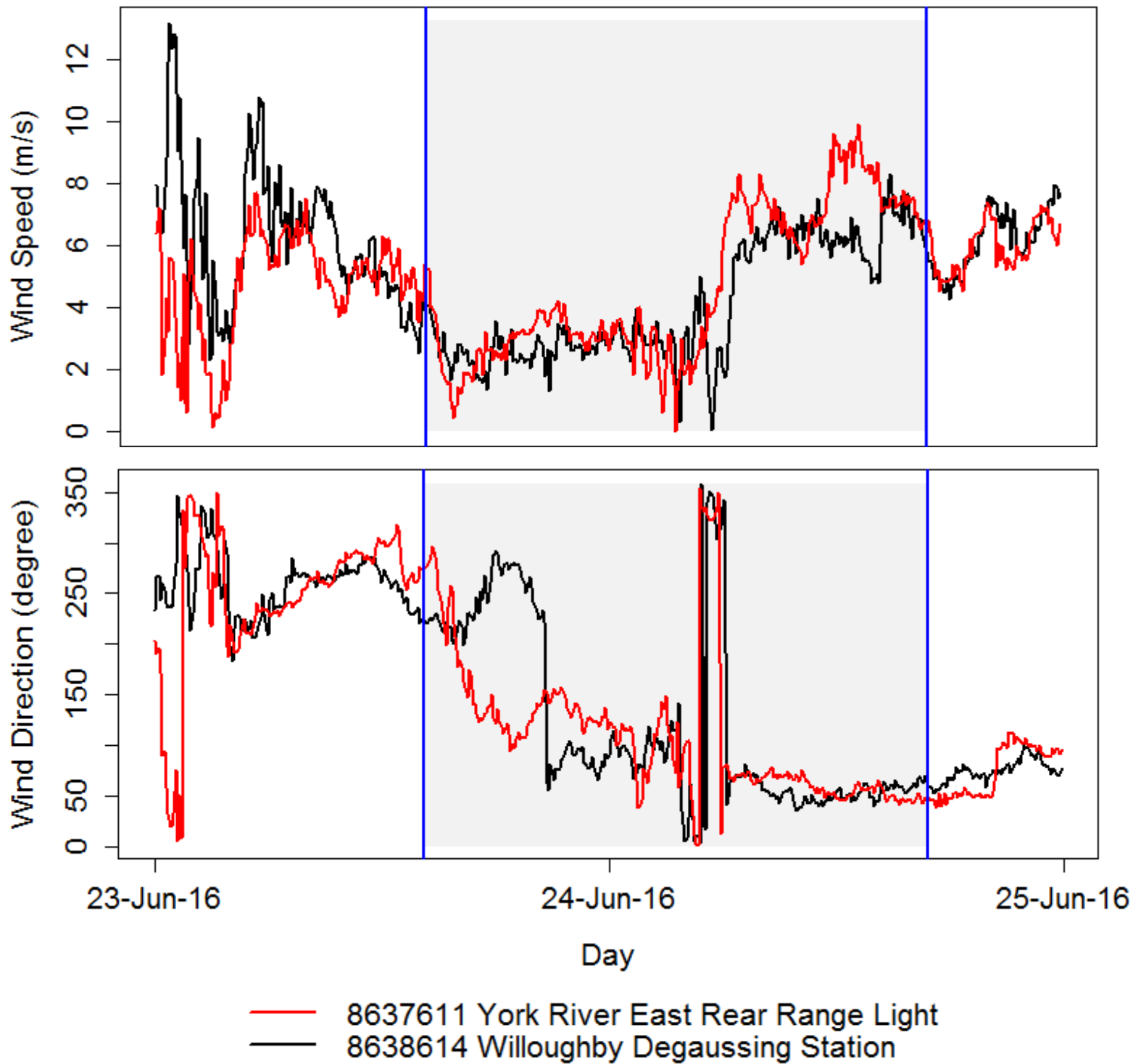


Figure A6. Reported wind speed (m/s) and wind direction (degrees from true north) from monitoring stations 8637611 York River East Rear Range Light and 8638614 Willoughby Degaussing Station. Area between the blue lines represent the full time period of deployment 2.

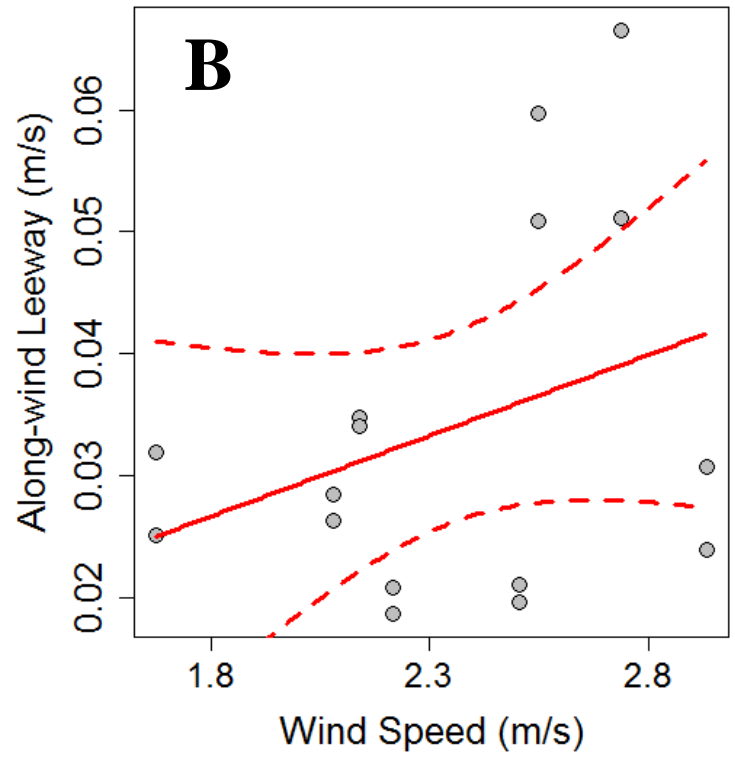
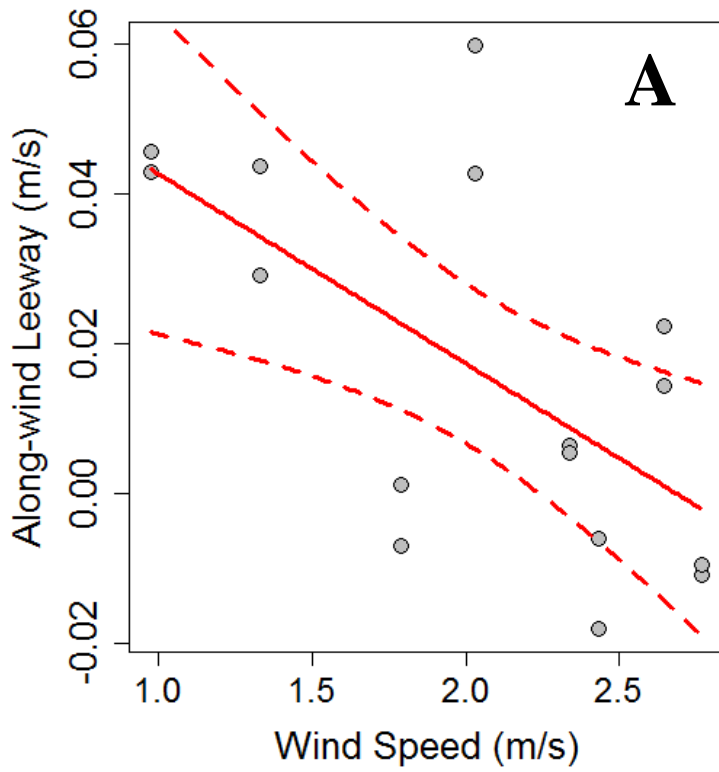


Figure A7. Deployment 2 results of the along-wind component of leeway for turtle carcass drifter 3 using metrological data from monitoring stations (A) 8637611 York River East Rear Range Light and (B) 8638614 Willoughby Degaussing Station. Dashed lines represent 95% confidence intervals.

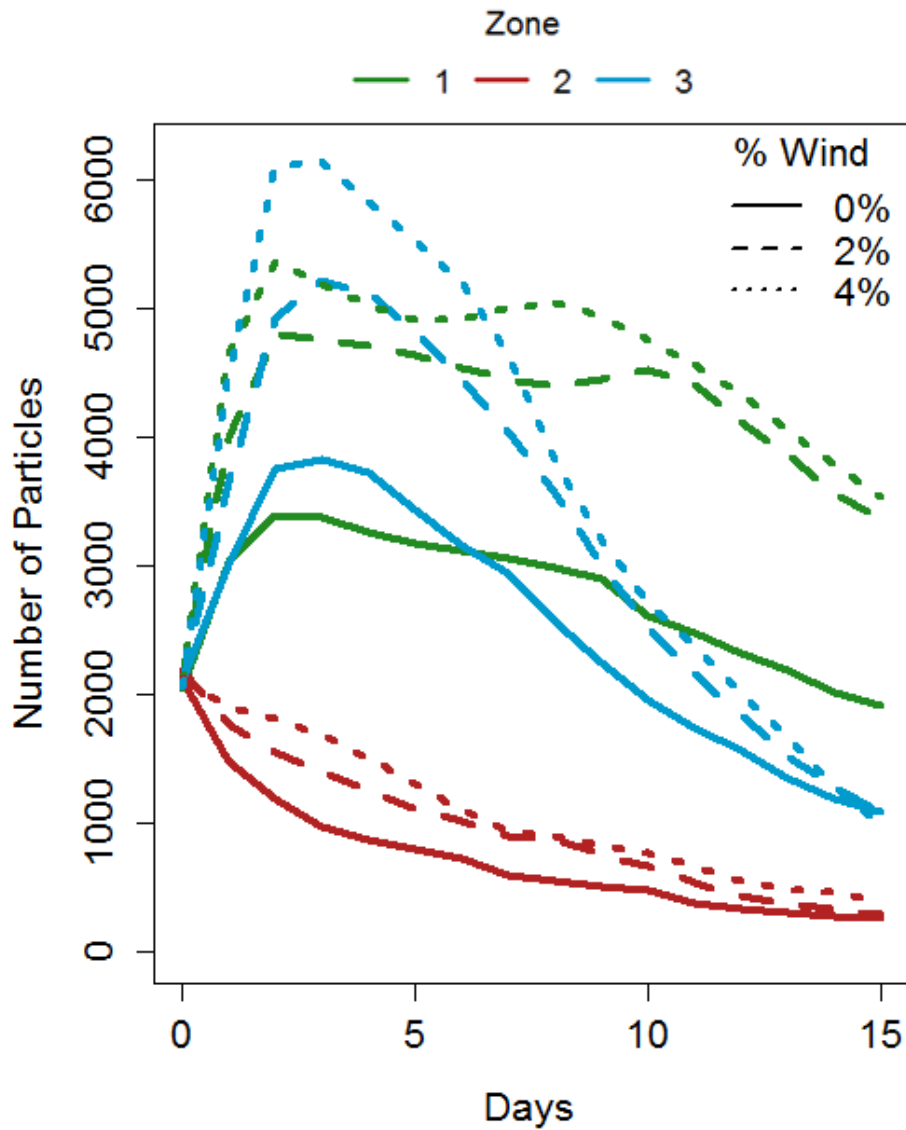


Figure A8. Relative number of particles from the oceanographic model making landfall over elapsed time (days). Simulation results are a composite over 5 months of June from the years 2001-2005.

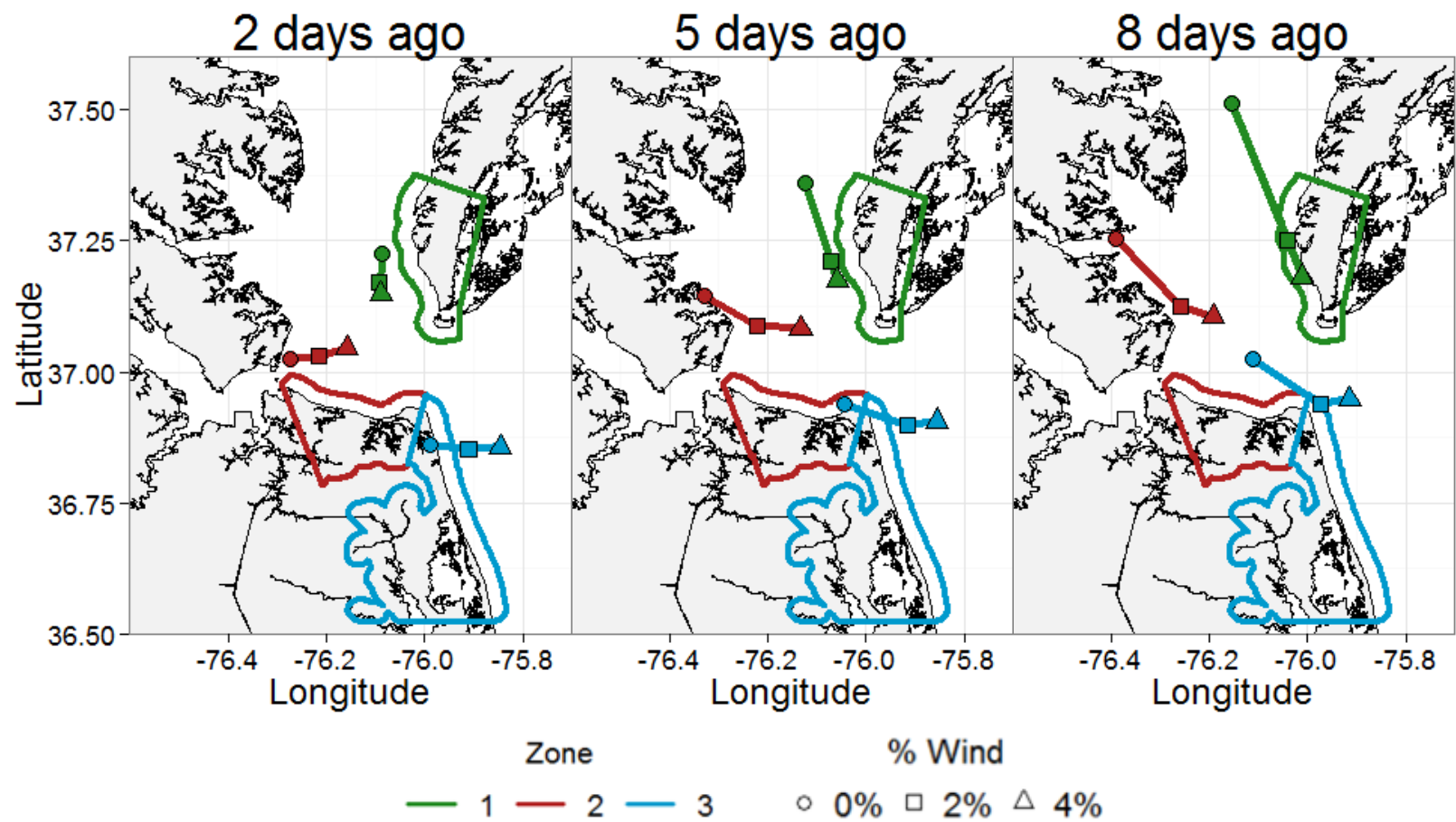


Figure A9. Mean starting locations 2, 5, and 8 days prior to stranding in top zones. Zone number corresponds to locations in Figure 1. Simulation results are a composite over 5 months of June from the years 2001-2005.