

Supplementary data and analysis for estimating walleye selectivity

Matthew W. Smith and John M. Hoenig

*Virginia Institute of Marine Science, College of William & Mary, Post Office Box 1346, Gloucester Point,
Virginia 23062, USA*

Neil Kmiecik and Mark A. Luehring

Great Lakes Indian Fish and Wildlife Commission, Post Office Box 9, Odanah, Wisconsin 54861, USA

Melissa T. Drake

*Minnesota Department of Natural Resources, Division of Fish and Wildlife, 500 Lafayette Road, St. Paul,
MN 55155, USA*

Patrick J. Schmalz

*Minnesota Department of Natural Resources, Division of Fish and Wildlife, 5351 North Shore Drive,
Duluth, Minnesota 55804, USA*

Greg G. Sass

*Escanaba Lake Research Station, Wisconsin Department of Natural Resources, 10810 County Hwy N,
Boulder Junction, Wisconsin 54512, USA*

Virginia Institute of Marine Science

Data Report 61

February 2014



Introduction

This document has been issued as VIMS Data Report 61 and provides data tables and results of exploratory analyses conducted as part of the complete data analysis for Myers et al. 2014 published in the Transactions of the American Fisheries Society.

Estimates of size- and sex-specific selectivity of fishing gear are important for making informed management decisions. We distinguish between capture selectivity – the relative catchability of the components of the population – and harvest selectivity, which is the combined effects of capture selectivity and the decision to retain or release a fish of a given population component. We used short-term recaptures from three extensive tagging programs in Minnesota and Wisconsin to estimate directly the size- and sex- specific selectivity of angling for captured and for harvested walleye *Sander vitreus*, and of spear fishing for harvested walleye. Estimates were obtained using generalized linear models with an information-theoretic approach to determining the significance of individual and interactive effects of length and sex on selectivity. The primary conclusions of this research are presented in Myers et al. 2014. Residual analyses for the models presented in the manuscript, results of unpublished exploratory analyses, and the complete data set used to conduct the analyses are presented in this supplementary document. Through this data report, interested readers can repeat the analyses conducted in Myers et al. 2014, as well as see the results of additional analyses not presented in the primary publication.

References

- Jacobson, P. C. 1994. Population dynamics of large walleye in Big Sand Lake. Minnesota Department of Natural Resources, Section of Fisheries Investigation Report 436, St. Paul.
- Myers, R. A. and J. M. Hoenig. 1997. Direct estimates of gear selectivity from multiple tagging experiments. *Canadian Journal of Fisheries and Aquatic Sciences* 54:1-9.
- Myers, R. A., M. W. Smith, J. M. Hoenig, N. Kmiecik, M. Luehring, M. T. Drake, P. J. Schmalz and G. G. Sass. 2014. Size- and Sex-Specific Capture and Harvest Selectivity of Walleyes from Tagging Studies. *Transactions of the American Fisheries Society* 143:438-450.

Supplemental results for analyses presented in Myers et al. 2014 and additional analyses not presented in the manuscript.

Big Sand Lake angler harvest selectivity

A suite of plausible models was fitted to the Big Sand Lake data. The model with experiment, sex, length and interactoin between sex and two size-groups was preferred (Table 1). The model fit the data well as indicated by the relatively smooth selectivity curves (Figure 1) and unpatterned residuals (Figure 2). Selectivity estimates and standard errors are presented in Table 2.

Table 1. Model selection criteria for angling harvest selectivity models fit to walleye mark recapture data from Big Sand Lake. Main factors tested are experiment (Exp), length class (Length), and sex, with interactions identified by *. The number of parameters (K), corrected quasi-Akaike information criterion ($QAIC_c$), delta corrected quasi-Akaike information criterion ($\Delta QAIC_c$), normalized Akaike weights (w), and the quasi-log likelihood value for each model are shown. The variance inflation factor (\hat{c}), obtained from the (Exp*Sex, Length) model, was equal to 1.45 for Big Sand Lake angling.

Model	K	QAIC _c	$\Delta QAIC_c$	w	Log likelihood
Exp, Length*Sex ^a	21	285.91	0.00	0.64	-114.25
Exp, Length, Sex	20	287.17	1.27	0.34	-116.70
Exp, Length*Sex ^b	22	292.69	6.78	0.02	-115.77
Exp, Length	19	301.44	15.53	0.00	-125.59
Length, Sex	18	303.40	17.49	0.00	-128.27
Length	17	325.37	39.47	0.00	-140.91
Exp	4	342.27	56.36	0.00	-166.87
Exp, Sex	5	344.49	58.59	0.00	-166.85
NULL	2	365.92	80.01	0.00	-180.88
Sex	3	367.82	81.91	0.00	-180.76

a interactions between sex and two size factors (≤ 500 mm and > 500 mm total length)

b interactions between sex and three size factors (≤ 500 mm, 501 – 600 mm, and > 600 mm total length)

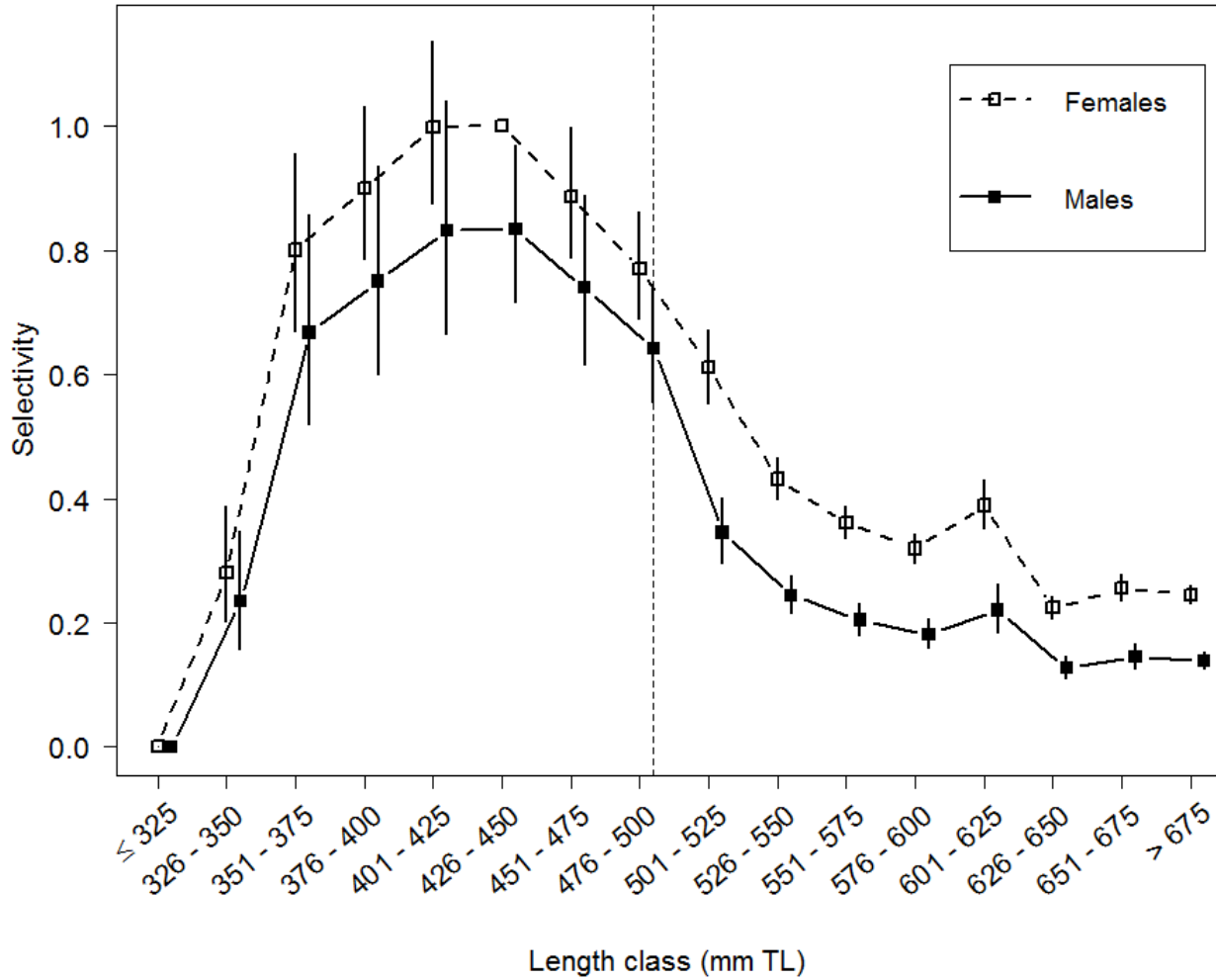


Figure 1. Estimated harvest selectivity curves for male and female walleye harvested by anglers on Big Sand Lake. Error bars were calculated using the delta method and depict \pm one standard error of the estimated selectivity for a given length class, sex and interaction. Male selectivity estimates and error bars are offset slightly from those of females to improve interpretability. Fish were tabulated in 25 millimeter total length (TL) bins. Vertical dashed line separates the two size classes used to test the size-sex interaction.

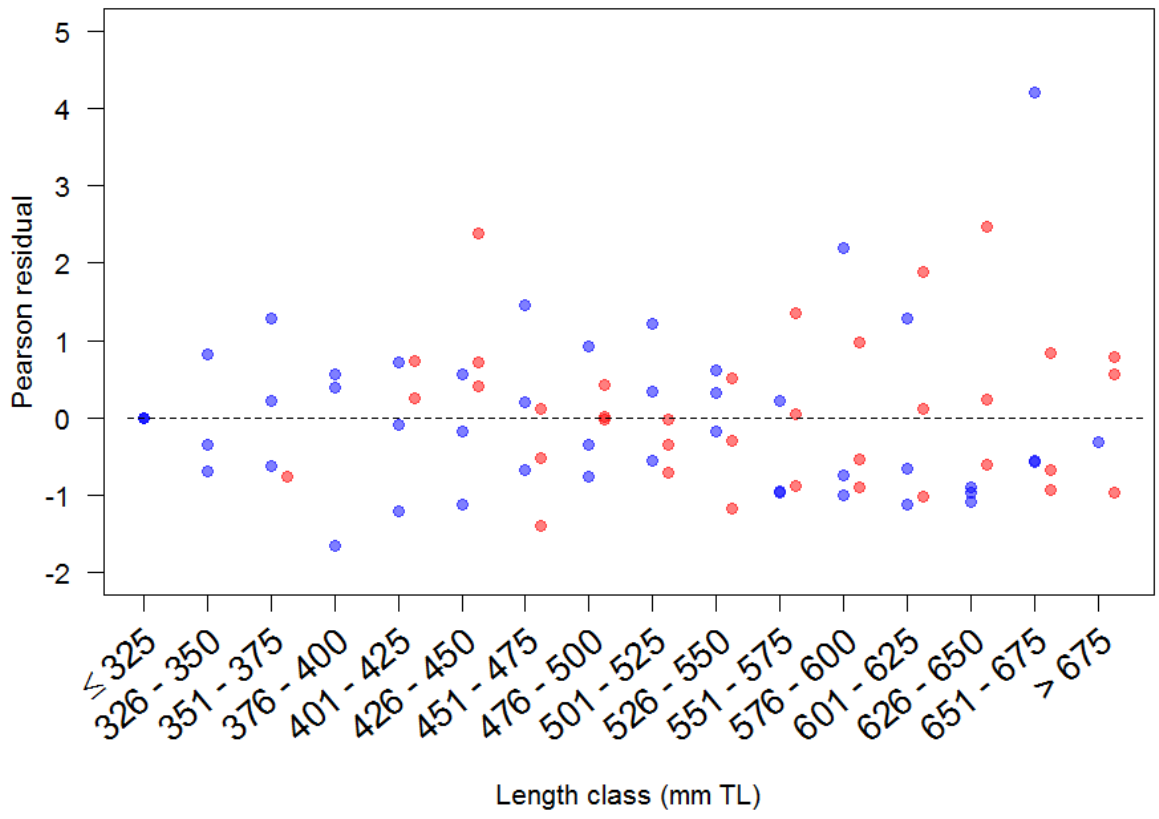


Figure 2. Model residuals for estimated angling harvest selectivity for Big Sand Lake. Residuals for females are shown in red and males are shown in blue. Residuals are absent for experiments where there were no animals tagged of a given length - sex group. Fish were tabulated in 25 millimeter total length (TL) bins.

Table 2. Length- and sex specific estimates of angling harvest selectivity (Est.) and associated standard errors, adjusted for overdispersion, (SE) for Big Sand Lake. Estimates were obtained for 25 mm length bins.

Length Bin	BSL (F)	BSL (F)	BSL (M)	BSL (M)
	Est.	SE	Est.	SE
≤ 325	< 0.001	0.0002	< 0.001	0.0002
326-350	0.281	0.326	0.234	0.394
351-375	0.801	0.178	0.667	0.251
376-400	0.900	0.136	0.750	0.222
401-425	0.998	0.131	0.832	0.225
426-450	1.000	NA	0.833	0.152
451-475	0.887	0.117	0.739	0.183
476-500	0.771	0.111	0.642	0.147
501-525	0.611	0.097	0.345	0.151
526-550	0.432	0.076	0.244	0.126
551-575	0.361	0.072	0.204	0.121
576-600	0.320	0.074	0.181	0.128
601-625	0.389	0.101	0.220	0.174
626-650	0.224	0.083	0.127	0.141
651-675	0.256	0.084	0.145	0.139
> 675	0.245	0.060	0.139	0.091

Great Lakes Indian Fish and Wildlife Commission harvest selectivity

A suite of plausible models was fitted to the GLIFWC data. The model with experiment and sex was preferred followed by the model with only experiment (Table 3). These results indicated that the GLIFWC data either are not robust enough to detect differences in selectivity between the length bins or that there was uniform selectivity among lengths. The sex effect from the experiment and sex model was 0.63 indicating that females are about 47% more catchable for a given length group. Length- and sex- specific selectivity curves produced from the experiment, length and sex model are displayed in Figure 3. This model fits the data poorly as indicated by the jagged selectivity curve and skewed/strongly patterned residuals (Figure 4). Selectivity estimates and standard errors from the experiment, length, and sex model are presented in Table 4.

Table 3. Model selection criteria for angling harvest selectivity models fit to walleye mark recapture data obtained from GLIFWC. Main factors tested are experiment (Exp), length class (Length), and sex, with interactions identified by *. The number of parameters (K), corrected quasi-Akaike information criterion ($QAIC_c$), delta corrected quasi-Akaike information criterion ($\Delta QAIC_c$), normalized Akaike weights (w), and the quasi-log likelihood value for each model are shown. The variance inflation factor (\hat{c}), obtained from the (Exp*Sex, Length) model, was equal to 1.451.

Model	K	QAIC _c	$\Delta QAIC_c$	w	Log likelihood
Exp, Sex	69	770.93	0.00	0.95	-312.08
Exp	68	776.74	5.81	0.05	-316.11
Exp, Length, Sex	81	788.74	17.80	0.00	-307.26
Exp, Length*Sex ^a	82	789.25	18.32	0.00	-306.36
Exp, Length*Sex ^b	83	789.28	18.35	0.00	-305.22
Exp, Length	80	790.48	19.55	0.00	-309.29
NULL	2	854.16	83.23	0.00	-425.08

a interactions between sex and two size factors (≤ 450 mm and > 450 mm total length)

b interactions between sex and three size factors (≤ 400 mm, 401 – 500 mm, and > 500 mm total length)

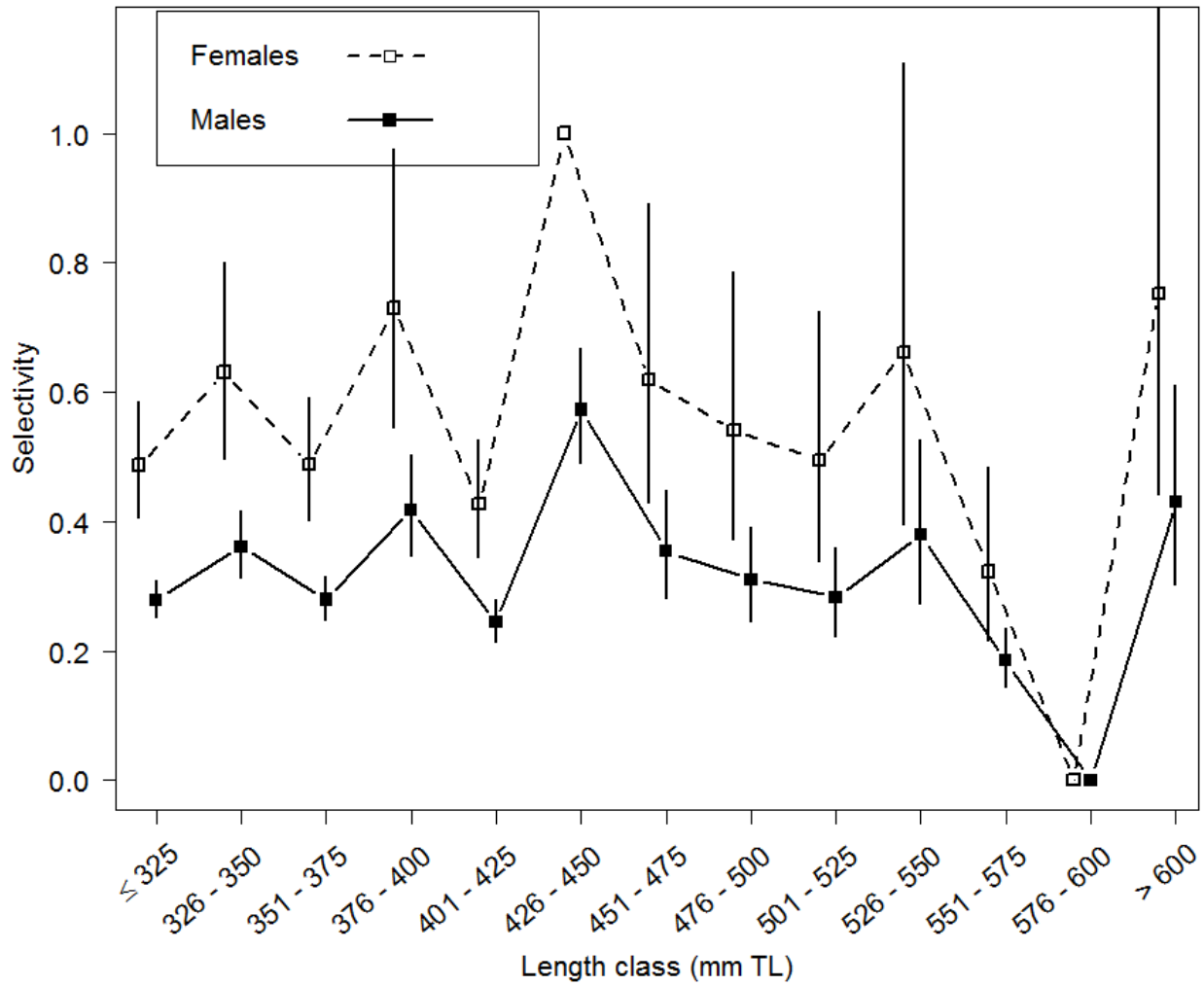


Figure 3. Estimated harvest selectivity curves for male and female walleye harvested by anglers on the lakes included in the GLIFWC data set. Error bars were calculated using the delta method and depict \pm one standard error of the estimated selectivity for a given length class, sex and interaction. Male selectivity estimates and error bars are offset slightly from those of females to improve interpretability. Fish were tabulated in 25 millimeter total length (TL) bins.

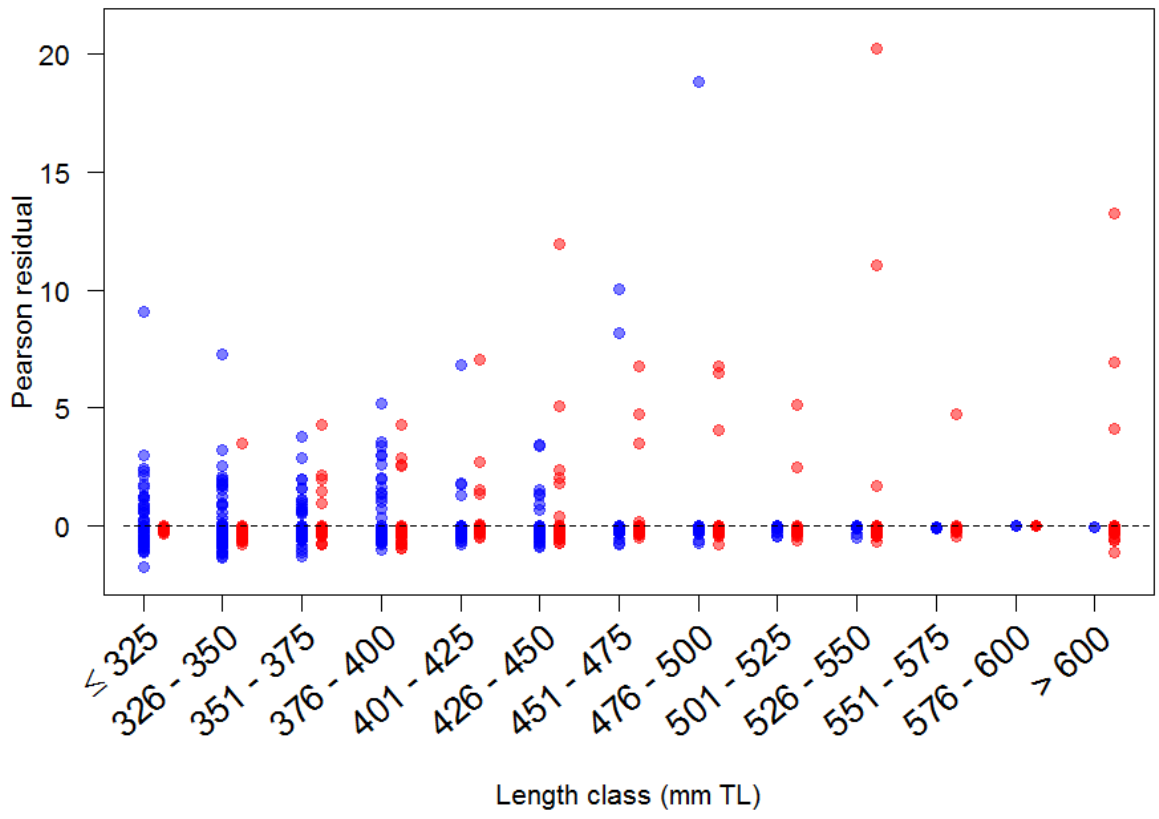


Figure 4. Model residuals for estimated angling harvest selectivity for GLIFWC data set. Residuals for females are shown in red and males are shown in blue. Residuals are absent for experiments where there were no animals tagged of a given length - sex group. Fish were tabulated in 25 millimeter total length (TL) bins. Extremely large residuals occurred when a fish was harvested from a group with few releases.

Table 4. Length- and sex specific estimates of angling harvest selectivity (Est.) and associated standard errors, adjusted for overdispersion, (SE) for the GLIFWC data set. Estimates were obtained for 25 mm length bins.

Length Bin	GLIFWC (F)		GLIFWC (M)	
	Est.	SE	Est.	SE
≤ 325	0.487	0.183	0.279	0.104
326-350	0.631	0.238	0.361	0.140
351-375	0.488	0.193	0.280	0.118
376-400	0.730	0.290	0.418	0.185
401-425	0.426	0.212	0.244	0.135
426-450	1.00	NA	0.573	0.154
451-475	0.619	0.364	0.354	0.234
476-500	0.541	0.372	0.310	0.234
501-525	0.494	0.381	0.283	0.241
526-550	0.662	0.516	0.379	0.327
551-575	0.323	0.404	0.185	0.242
576-600	0.000	0.000	0.000	0.000
> 600	0.752	0.534	0.431	0.351

Escanaba Lake capture selectivity

A suite of plausible models was fitted to the Escanaba Lake data. The model with experiment, length, sex and interaction between two size groups and sex was preferred (Table 5). This model predicted that anglers preferentially selected females at small sizes and males at large sizes (Figure 5 middle panel). This result was determined not to be credible. Exploration of the data (see data tables, this document) revealed that very few males were released in the large size group and that, by chance, the recovery rate of males increased for the length bins that corresponded with the large size group (Myers et al. 2014). We hypothesized that the significance of the interaction in the preferred model was the result of the arbitrary selection of size groups and sampling error and not real differences in selectivity. To test this, we fitted two additional models that divided the length bins into size groups using the length bin one to the right and one to the left of the original size group delimiting length bin (Figure 5). Model output showed that including one more length bin in the large size group (i.e., making the dividing length bin smaller) reduced the magnitude of the large size effect from 0.58 to 0.24 and made it no longer significant ($P = 0.0728$). Consequently, the interactive model was removed from the set of plausible models which resulted in the model that included experiment, length and sex with no interactions being preferred (Figure 6). The full model without interaction received 100% of the QAICc weight after the interactive models were removed. Residuals for this model were adequate (Figure 7) and the selectivity estimates and standard errors are presented in Table 6.

Table 5. Model selection criteria for angling capture selectivity models fit to walleye mark recapture data obtained from Escanaba Lake. Main factors tested are experiment (Exp), length class (Length), and sex, with interactions identified by *. The number of parameters (K), corrected quasi-Akaike information criterion (QAIC_c), delta corrected quasi-Akaike information criterion (Δ QAIC_c), normalized Akaike weights (w), and the quasi-log likelihood value for each model are shown. The variance inflation factor (\hat{c}), obtained from the (Exp*Sex, Length) model, was equal to 1.57.

Model	K	QAIC _c	Δ QAIC _c	w	Log likelihood
Exp, Length*Sex ^a	48	1607.31	0.00	0.97	-751.03
Exp, Length, Sex	47	1614.54	7.23	0.03	-755.84
Exp, Sex	32	1645.06	37.75	0.00	-788.51
Exp, Length	46	1646.07	38.76	0.00	-772.80
Exp	31	1650.49	43.18	0.00	-792.36
NULL	2	2162.43	555.12	0.00	-1079.20

a interactions between sex and two size factors (\leq 500 mm and $>$ 500 mm total length)

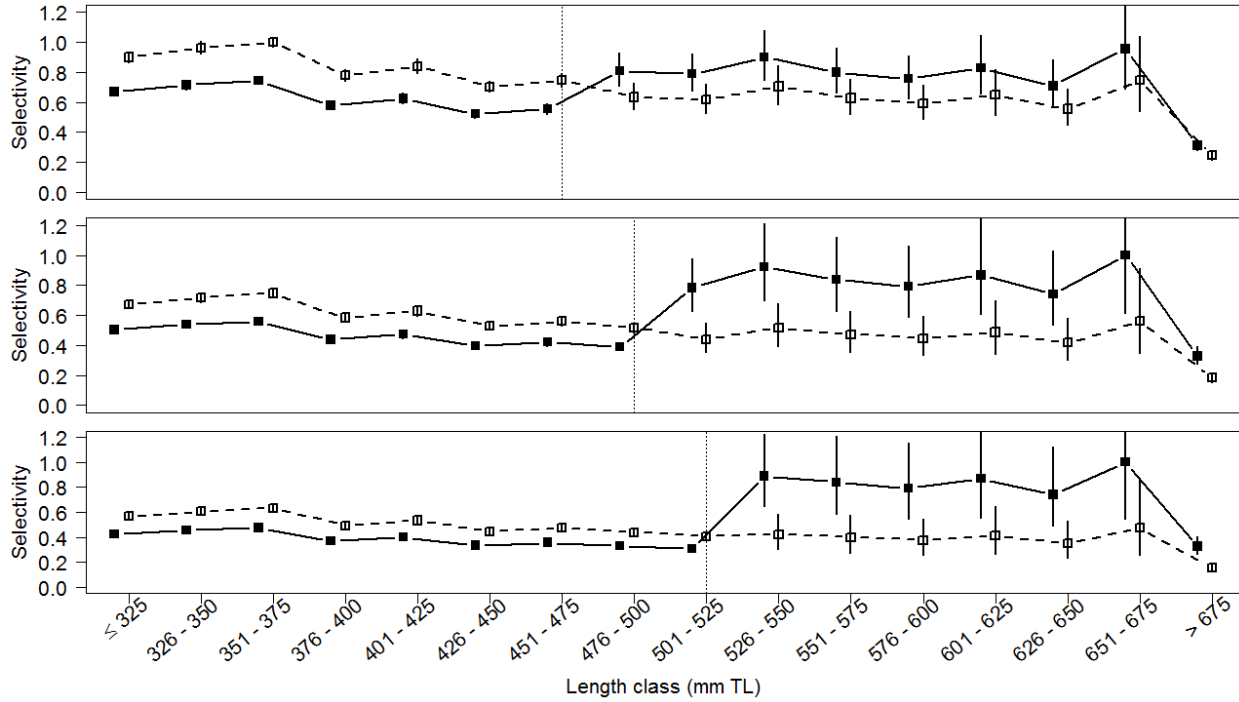


Figure 5. Estimated capture selectivity curves for male and female walleye captured by anglers on Escanaba Lake. Results for males are shown with black squares and female results are shown with open squares. Error bars were calculated using the delta method and depict \pm one standard error of the estimated selectivity for a given length class, sex and interaction. Male selectivity estimates and error bars are offset slightly from those of females to improve interpretability. Fish were tabulated in 25 millimeter total length (TL) bins. Vertical dashed line separates the two size classes used to test the size-sex interaction.

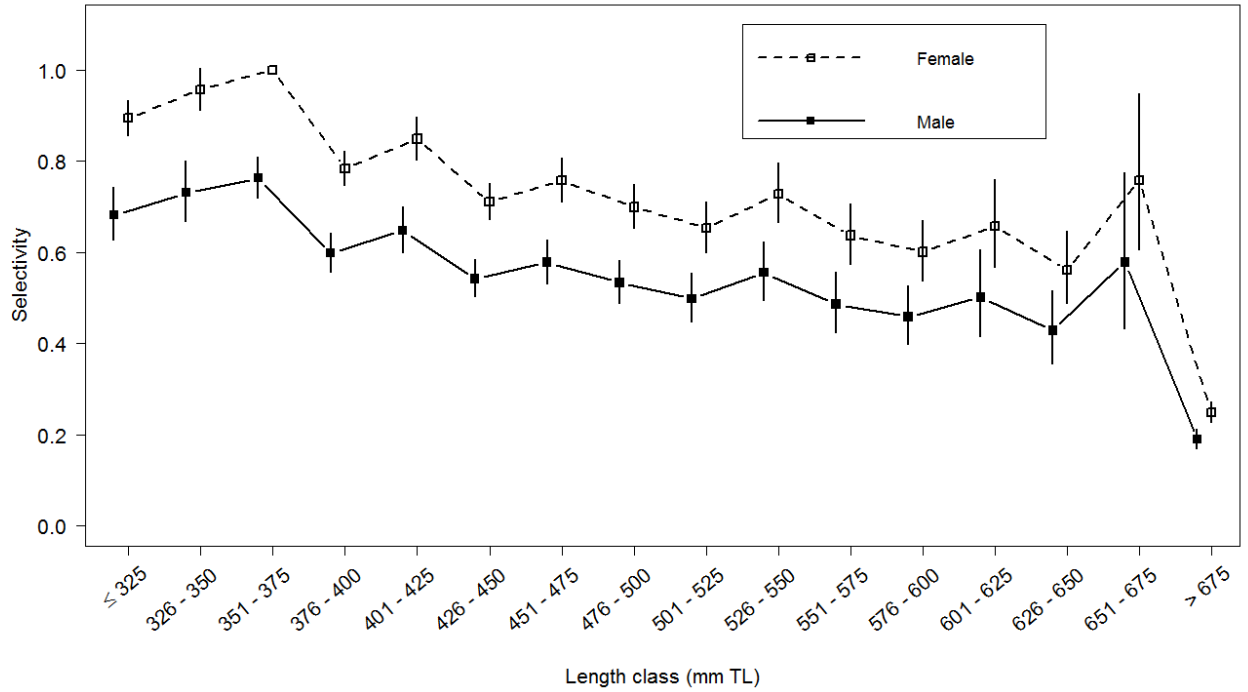


Figure 6. Estimated capture selectivity curves for male and female walleye captured by anglers on Escanaba Lake. Error bars were calculated using the delta method and depict \pm one standard error of the estimated selectivity for a given length class and sex. Male selectivity estimates and error bars are offset slightly from those of females to improve interpretability. Fish were tabulated in 25 millimeter total length (TL) bins.

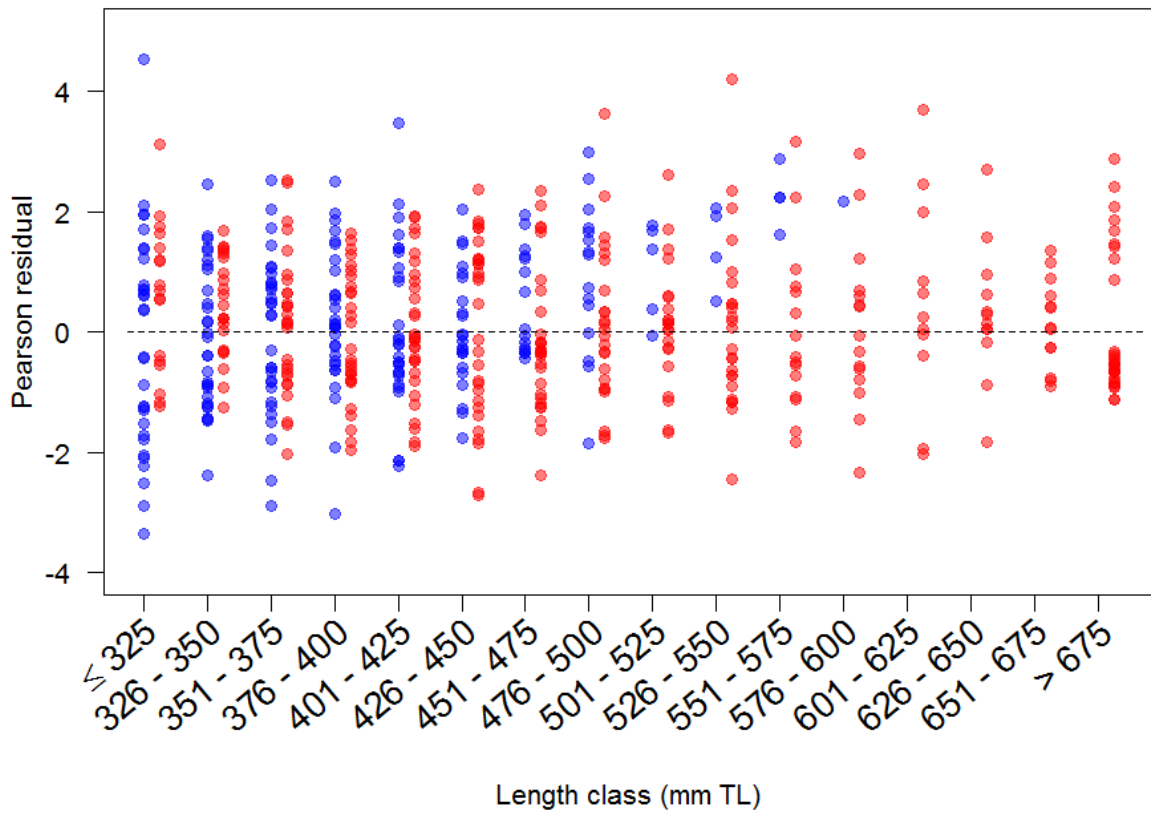


Figure 7. Residuals of the full model with no interactions for the Escanaba Lake angling capture selectivity. Residuals for females are shown in red and males are shown in blue. Residuals are absent for experiments where there were no animals tagged of a given length - sex group. Fish were tabulated in 25 millimeter total length (TL) bins.

Table 6. Length- and sex specific estimates of angling capture selectivity (Est.) and associated standard errors, adjusted for overdispersion, (SE) for Escanaba Lake. Estimates were obtained for 25 mm length bins.

Length Bin	Escanaba (F) Est.	Escanaba (F) SE	Escanaba (M) Est.	Escanaba (M) SE
≤ 325	0.89	0.04	0.68	0.08
326-350	0.96	0.05	0.73	0.09
351-375	1.00	NA	0.76	0.06
376-400	0.78	0.05	0.60	0.07
401-425	0.85	0.06	0.65	0.08
426-450	0.71	0.06	0.54	0.07
451-475	0.76	0.06	0.58	0.08
476-500	0.70	0.07	0.53	0.09
501-525	0.65	0.08	0.50	0.11
526-550	0.73	0.09	0.56	0.11
551-575	0.64	0.10	0.49	0.13
576-600	0.60	0.11	0.46	0.14
601-625	0.66	0.15	0.50	0.19
626-650	0.56	0.14	0.43	0.18
651-675	0.76	0.22	0.58	0.29
> 675	0.25	0.09	0.19	0.11

Combined Big Sand Lake and Escanaba Lake angling capture selectivity

Capture selectivity curves for Big Sand Lake were estimated by dividing the number of recaptures in each length-sex bin by the corresponding probability of retention in the creel (Jacobson 1994) and rounding the result to the nearest whole number. The retention probabilities were estimated in the creel survey by asking anglers about the number and size of released fish and computing proportions released by size. We assume these retention probabilities are known without error because the number of interviews is large; any error in the estimated probabilities is likely due to unquantifiable, non-sampling error. Capture selectivity estimates were obtained for Escanaba Lake using the raw Escanaba Lake tag return data because anglers retain almost all fish caught. Combined Big Sand Lake and Escanaba Lake capture selectivity curves were estimated using the raw Escanaba Lake data and the Big Sand Lake data adjusted for retention rates.

Transforming the Big Sand Lake harvest selectivity curve into a capture selectivity curve resulted in similar patterns of capture selectivity between Big Sand Lake and Escanaba Lake (Figure 8). Analysis of the combined data set resulted in the model with experiment, length, sex and interaction between sex and two size factors being preferred (Table 7 and Figure 9). Model residuals were adequate, and showed no signs of outliers, influential points or obvious pattern with length (Figure 10). Selectivity estimates and standard errors are presented in Table 8.

Table 7. Model selection criteria for angling capture selectivity models fit to walleye mark recapture data obtained from Escanaba Lake and Big Sand Lake. Main factors tested are experiment (Exp), length class (Length), and sex, with interactions identified by *. The number of parameters (K), corrected quasi-Akaike information criterion ($QAIC_c$), delta corrected quasi-Akaike information criterion ($\Delta QAIC_c$), normalized Akaike weights (w), and the quasi-log likelihood value for each model are shown. The variance inflation factor (\hat{c}), obtained from the (Exp*Sex, Length) model, was equal to 1.62.

Model	K	$QAIC_c$	$\Delta QAIC_c$	w	Log likelihood
Exp, Length*Sex ^a	51	1833.15	0.00	0.86	-861.05
Exp, Length*Sex ^b	52	1837.80	4.65	0.08	-862.19
Exp, Length, Sex	50	1838.72	5.56	0.05	-865.01
Exp, Length	49	1890.66	57.51	0.00	-892.16
Exp, Sex	35	1901.30	68.15	0.00	-913.56
Exp	34	1909.64	76.49	0.00	-918.85
Null	2	2433.78	600.62	0.00	-1214.88

a interactions between sex and two size factors (≤ 500 mm and > 500 mm total length)

b interactions between sex and three size factors (≤ 500 mm, 501 – 600 mm, and > 600 mm total length)

c interactions between sex and two size factors (≤ 400 mm and > 400 mm total length)

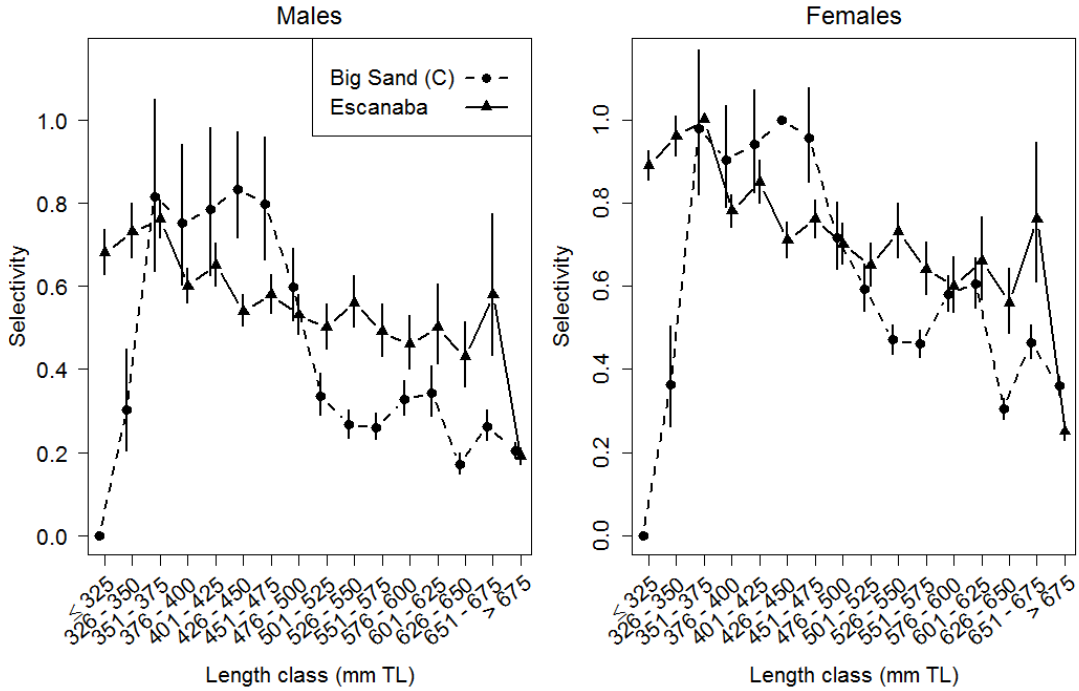


Figure 8. Separately estimated capture selectivity curves for male and female walleye caught by anglers on Big Sand Lake and Escanaba Lake. Big Sand Lake capture selectivity (C) was obtained by dividing the harvest selectivity from Figure 2 by the length specific retention probabilities estimated for Big Sand Lake anglers. Retention probabilities did not differ by sex. Error bars were calculated using the delta method and depict \pm one standard error of the estimated selectivity for a given length class and sex. The size-sex interaction with two sizes (small \leq 500mm and large $>$ 500mm) was significant for Big Sand Lake but not for Escanaba Lake. Escanaba Lake selectivity estimates and error bars are offset slightly from those of Big Sand Lake to improve interpretability. Fish were tabulated in 25 millimeter total length (TL) bins.

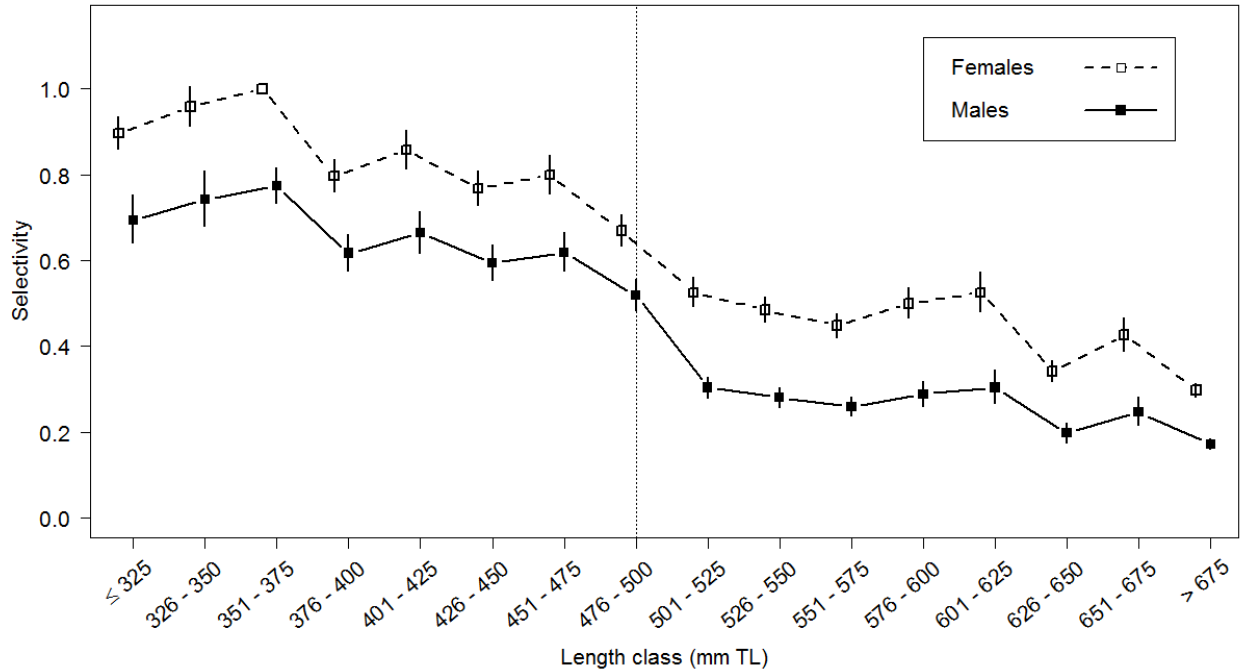


Figure 9. Pooled data estimates of capture selectivity for male and female walleye captured by anglers on Big Sand Lake and Escanaba Lake. Big Sand Lakes harvest-only tag recoveries were converted to capture recoveries by dividing the length-specific harvest recoveries by the length specific retention probabilities estimated for Big Sand Lake anglers. Retention probabilities did not differ by sex. Error bars were calculated using the delta method and depict \pm one standard error of the estimated selectivity for a given length class, sex and interaction. Male selectivity estimates and error bars are offset slightly from those of females to improve interpretability. Fish were tabulated in 25 millimeter total length (TL) bins. Vertical dashed line separates the two size classes used to test the size-sex interaction.

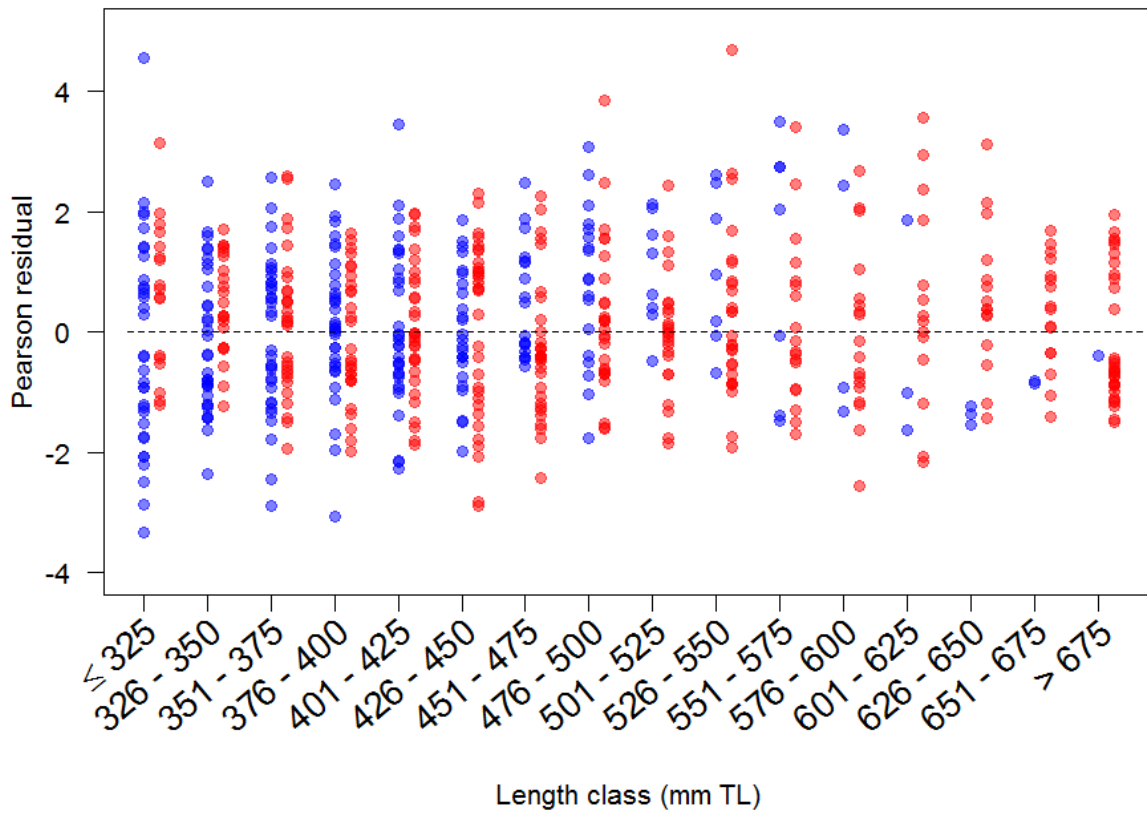


Figure 10. Residuals for the best (determined by AIC; see table 7) combined Escanaba Lake and Big Sand Lake angling capture selectivity model. Residuals for females are shown in red and males are shown in blue. Residuals are absent for experiments where there were no animals tagged of a given length - sex group. Fish were tabulated in 25 millimeter total length (TL) bins.

Table 8. Length- and sex specific estimates of angling capture selectivity (Est.) and associated standard errors, adjusted for overdispersion, (SE) for the combined data from Big Sand Lake and Escanaba Lake. Estimates were obtained for 25 mm length bins.

Length Bin	Female Est.	Female SE	Male Est.	Male SE
≤ 325	0.90	0.04	0.69	0.08
326-350	0.96	0.05	0.74	0.09
351-375	1.00	NA	0.77	0.05
376-400	0.80	0.05	0.62	0.07
401-425	0.86	0.05	0.66	0.07
426-450	0.77	0.05	0.59	0.07
451-475	0.80	0.06	0.62	0.07
476-500	0.67	0.06	0.52	0.07
501-525	0.53	0.06	0.30	0.08
526-550	0.48	0.06	0.28	0.08
551-575	0.45	0.06	0.26	0.09
576-600	0.50	0.07	0.29	0.10
601-625	0.53	0.09	0.30	0.13
626-650	0.34	0.07	0.20	0.12
651-675	0.43	0.09	0.25	0.13
> 675	0.30	0.05	0.17	0.07

Spearing selectivity estimates obtained from GLIFWC tagging data

The spearing selectivity model that included experiment, sex, and length without interactions was the preferred model and obtained 78% of the weight (Table 9). The model that included a size-sex interaction obtained the remaining 22% of the weight. The main effects model was used to estimate selectivity. The selectivity was similar for the two largest length classes and the selectivity of spearing for females was 17% that of the males (SE = 2%; Figure 11). There was no pattern in the Pearson residuals with respect to length, sex or experiment that would lead to rejection of the model (Figure 12). Estimated selectivity and standard errors are presented in Table 10.

Table 9. Model selection criteria for spearing selectivity models fit to walleye mark recapture data obtained from GLIFWC data obtained from northern Wisconsin. Main factors tested are experiment (Exp), length class (Length), and sex, with interactions identified by *. The number of parameters (K), corrected quasi-Akaike information criterion ($QAIC_c$), delta corrected quasi-Akaike information criterion ($\Delta QAIC_c$), normalized Akaike weights (w), and the quasi-log likelihood value for each model are shown. The variance inflation factor (\hat{c}), obtained from the (Exp*Sex, Length) model, was equal to 1.79.

Model	K	$QAIC_c$	$\Delta QAIC_c$	w	Log likelihood
Exp, Length, Sex	80	1272.45	0.00	0.78	-546.27
Exp, Length*Sex ^c	81	1274.98	2.53	0.22	-546.27
Exp, Length	79	1460.79	188.34	0.00	-641.70
Exp, Sex	74	1817.33	544.88	0.00	-826.22
Exp	73	1944.92	672.48	0.00	-891.25
Null	2	3767.94	2495.49	0.00	-1881.96

c interactions between sex and two size factors (≤ 400 mm and > 400 mm total length)

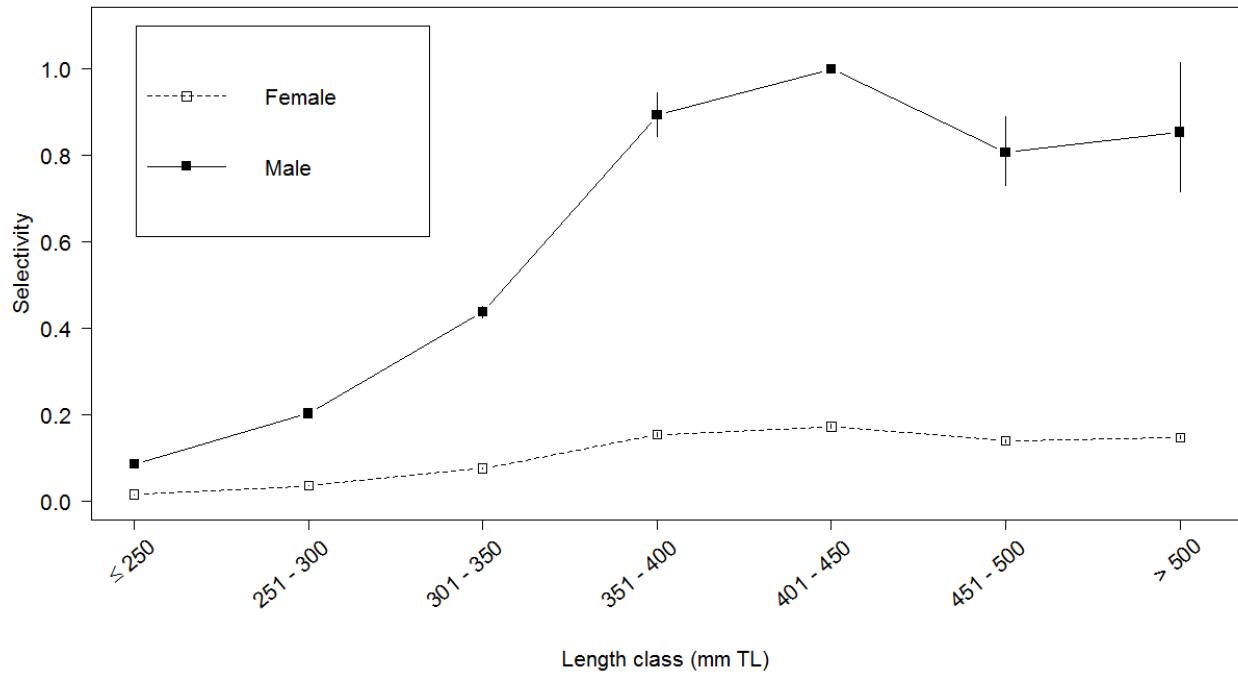


Figure 11. Estimated selectivity for male and female walleye captured by spear fishers during 72 tagging experiments conducted between 1996 and 2011 in eight northern Wisconsin lakes. Error bars were calculated using the delta method and depict \pm one standard error of the estimated selectivity for a given length class and sex. Recaptured fish were tabulated into 50 millimeter total length (TL) bins.

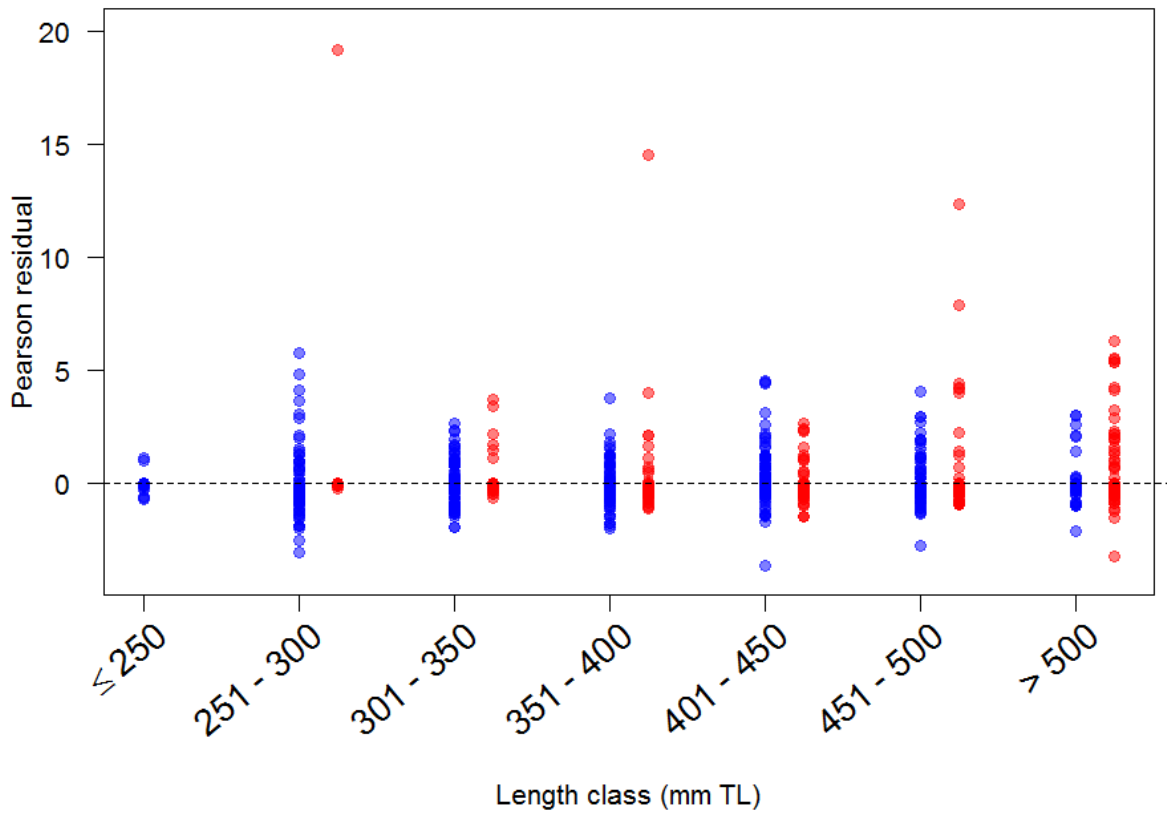


Figure 12. Residuals for the best (determined by AIC; see table 9) sparring selectivity model. Residuals for females are shown in red and males are shown in blue. Residuals are absent for experiments where there were no animals tagged of a given length - sex group. Fish were tabulated in 50 millimeter total length (TL) bins. Extremely large residuals occurred when a fish was harvested from a group with few releases.

Table 10. Length- and sex specific estimates of spearing electivity (Est.) and associated standard errors, adjusted for overdispersion, (SE) for GLIFWC data. Estimates were obtained for 50 mm length bins.

Length Bin	Female Est.	Female SE	Male Est.	Male SE
≤ 250	0.01	0.01	0.09	0.06
251-300	0.03	0.01	0.20	0.02
301-350	0.08	0.01	0.44	0.03
351-400	0.15	0.03	0.89	0.06
401-450	0.17	0.03	1.00	NA
451-500	0.14	0.03	0.81	0.10
> 500	0.15	0.03	0.86	0.17

Data files used for walleye selectivity analysis

Data are tabulated by lake, year, sex, and length with length tabulated in 25mm total length bins for data used to estimate angling selectivity and 50mm TL bins for data used to estimate spearing selectivity. NA values in the tables indicate that no releases of that length-sex combination were made in that given lake during that given year. Big Sand Lake data are presented in Tables 11 and 12, Escanaba Lake data are presented in Tables 13 and 14, angling data for the lakes included in the GLIFWC data set are presented in Tables 15 – 30, and spearing data for the lakes included in the GLIFWC data set are presented in Tables 31 – 38.

Table 11. Length- and year- specific release and recapture data for male walleye caught and harvested by anglers in Big Sand Lake, Minnesota. Recaptures are only included if they occurred in the same year as release. Releases and recaptures are tabulated in 25 millimeter length bins as originally presented in Jacobson (1994) and subsequently used in the angling harvest selectivity analysis as presented in Myers et al. (2014).

Length (mm)	1990		1991		1992		Total	
	Tagged	Recap.	Tagged	Recap.	Tagged	Recap.	Tagged	Recap.
≤ 325	2	0	1	0	1	0	4	0
326-350	6	1	1	0	6	0	13	1
351-375	59	11	38	12	11	4	108	27
376-400	154	41	81	29	52	7	287	77
401-425	185	55	119	44	94	19	398	118
426-450	142	33	93	34	103	29	338	96
451-475	120	26	119	47	123	29	362	102
476-500	96	24	80	20	82	15	258	59
501-525	100	18	69	20	68	9	237	47
526-550	101	13	65	10	67	9	233	32
551-575	75	8	55	5	54	3	184	16
576-600	59	3	47	4	47	8	153	15
601-625	29	2	28	2	22	4	79	8
626-650	12	0	10	0	19	0	41	0
651-675	4	0	3	0	3	2	10	2
> 675	0	0	1	0	0	0	1	0

Table 12. Length- and year- specific release and recapture data for female walleye caught and harvested in Big Sand Lake, Minnesota. Recaptures are only included if they occurred in the same year as release. Releases and recaptures are tabulated in 25 millimeter length bins as originally presented in Jacobson (1994) and subsequently used in the angling harvest selectivity analysis as presented in Myers et al. (2014).

Length (mm)	1990		1991		1992		Total	
	Tagged	Recap.	Tagged	Recap.	Tagged	Recap.	Tagged	Recap.
≤ 325	0	0	0	0	0	0	0	0
326-350	0	0	0	0	0	0	0	0
351-375	0	0	1	0	0	0	1	0
376-400	0	0	0	0	0	0	0	0
401-425	4	2	6	3	0	0	10	5
426-450	4	2	16	8	5	4	25	14
451-475	17	4	41	12	21	6	79	22
476-500	24	7	84	29	63	15	171	51
501-525	30	8	119	48	67	16	216	72
526-550	37	7	87	27	59	8	183	42
551-575	27	3	68	21	54	9	149	33
576-600	23	2	36	10	43	5	102	17
601-625	15	3	24	4	25	8	64	15
626-650	33	4	20	2	18	5	71	11
651-675	49	8	36	4	16	1	101	13
> 675	102	14	102	13	63	9	267	36

Table 13. Length- and year- specific release and recapture data for male walleye captured by anglers in Escanaba Lake, Wisconsin. Recaptures are only included if they occurred in the same year as release. Releases and recaptures are tabulated in 25 millimeter length bins as used in the angling capture selectivity analysis presented in Myers et al. (2014).

Length (mm)	1967		1968		1969		1972	
	Tagged	Recap.	Tagged	Recap.	Tagged	Recap.	Tagged	Recap.
≤ 325	356	186	61	13	158	26	105	5
326-350	109	48	91	18	104	14	79	6
351-375	31	6	52	10	152	27	64	9
376-400	24	4	28	6	92	15	49	3
401-425	16	2	7	1	26	11	28	2
426-450	17	3	6	2	20	6	12	0
451-475	12	4	11	4	14	3	5	0
476-500	13	1	9	1	5	0	3	1
501-525	7	2	3	0	9	0	4	0
526-550	3	2	1	1	2	0	1	0
551-575	3	0	1	1	1	0	NA	NA
576-600	NA	NA	NA	NA	NA	NA	NA	NA
601-625	1	0	NA	NA	NA	NA	NA	NA
626-650	NA	NA	NA	NA	NA	NA	NA	NA
651-675	NA	NA	NA	NA	NA	NA	NA	NA
> 675	NA	NA	NA	NA	NA	NA	NA	NA

Length (mm)	1974		1977		1979		1980	
	Tagged	Recap.	Tagged	Recap.	Tagged	Recap.	Tagged	Recap.
≤ 325	22	4	272	85	174	66	319	43
326-350	86	14	97	23	127	37	95	10
351-375	113	16	100	37	135	43	99	11
376-400	171	18	36	7	80	28	99	15
401-425	119	9	58	7	45	12	48	6
426-450	46	5	37	6	37	5	40	3
451-475	23	5	22	4	14	4	22	3
476-500	5	0	9	0	18	6	10	2
501-525	3	0	2	0	3	1	5	2
526-550	2	0	NA	NA	2	0	2	0
551-575	1	1	NA	NA	NA	NA	NA	NA
576-600	NA	NA	1	0	NA	NA	NA	NA
601-625	NA	NA	NA	NA	3	0	2	0
626-650	NA	NA	NA	NA	NA	NA	NA	NA
651-675	NA	NA	NA	NA	NA	NA	NA	NA
> 675	NA	NA	NA	NA	NA	NA	NA	NA

Length (mm)	1981		1982		1983		1984	
	Tagged	Recap.	Tagged	Recap.	Tagged	Recap.	Tagged	Recap.
≤ 325	149	42	117	29	114	20	649	173
326-350	196	55	31	11	123	38	41	9
351-375	136	31	55	15	42	23	37	15
376-400	56	2	53	10	46	19	20	8
401-425	36	6	25	5	42	17	19	7
426-450	23	3	12	4	20	5	14	3
451-475	19	3	12	2	9	2	4	0
476-500	2	0	9	1	4	1	3	0
501-525	4	0	1	0	3	2	NA	NA
526-550	1	0	2	0	1	0	1	0
551-575	NA	NA	NA	NA	NA	NA	2	0
576-600	NA	NA	NA	NA	NA	NA	NA	NA
601-625	NA	NA	NA	NA	NA	NA	NA	NA
626-650	1	0	NA	NA	NA	NA	NA	NA
651-675	NA	NA	NA	NA	NA	NA	NA	NA
> 675	NA	NA	NA	NA	NA	NA	NA	NA

Length (mm)	1985		1986		1987		1988	
	Tagged	Recap.	Tagged	Recap.	Tagged	Recap.	Tagged	Recap.
≤ 325	149	55	167	18	309	131	408	197
326-350	221	91	84	17	48	16	72	41
351-375	126	65	97	23	19	8	35	21
376-400	23	12	75	13	18	6	12	6
401-425	8	6	22	2	8	5	7	2
426-450	4	1	10	1	NA	NA	4	2
451-475	2	2	1	0	1	0	1	1
476-500	2	1	3	0	NA	NA	1	0
501-525	NA	NA	NA	NA	NA	NA	1	1
526-550	2	1	1	0	1	0	NA	NA
551-575	NA	NA	NA	NA	NA	NA	1	0
576-600	NA	NA	NA	NA	NA	NA	NA	NA
601-625	1	0	NA	NA	NA	NA	NA	NA
626-650	NA	NA	NA	NA	NA	NA	NA	NA
651-675	NA	NA	NA	NA	NA	NA	NA	NA
> 675	NA	NA	NA	NA	NA	NA	NA	NA

Length (mm)	1989		1990		1991		1992	
	Tagged	Recap.	Tagged	Recap.	Tagged	Recap.	Tagged	Recap.
≤ 325	566	216	267	111	101	20	23	7
326-350	91	42	56	17	100	28	31	8
351-375	23	7	23	5	60	7	31	11
376-400	9	3	6	4	19	3	24	6
401-425	2	0	2	0	10	1	18	4
426-450	NA	NA	NA	NA	1	0	4	1
451-475	NA	NA	NA	NA	2	0	NA	NA
476-500	1	0	1	0	1	1	NA	NA
501-525	1	0	NA	NA	1	0	NA	NA
526-550	NA	NA	NA	NA	NA	NA	1	0
551-575	NA	NA	NA	NA	1	0	NA	NA
576-600	NA	NA	NA	NA	NA	NA	NA	NA
601-625	1	0	NA	NA	NA	NA	NA	NA
626-650	NA	NA	NA	NA	NA	NA	NA	NA
651-675	NA	NA	NA	NA	NA	NA	NA	NA
> 675	NA	NA	NA	NA	NA	NA	NA	NA

Length (mm)	1993		1994		1995		1996	
	Tagged	Recap.	Tagged	Recap.	Tagged	Recap.	Tagged	Recap.
≤ 325	127	27	143	39	87	34	133	34
326-350	13	3	88	24	35	16	32	8
351-375	7	3	29	6	10	6	19	11
376-400	3	0	8	1	3	1	10	2
401-425	8	3	8	2	2	2	5	1
426-450	5	1	11	1	3	2	NA	NA
451-475	1	0	7	0	7	4	1	0
476-500	NA	NA	1	1	1	1	1	0
501-525	NA	NA	1	0	NA	NA	NA	NA
526-550	1	1	NA	NA	1	0	1	0
551-575	NA	NA	NA	NA	NA	NA	NA	NA
576-600	1	1	NA	NA	NA	NA	NA	NA
601-625	NA	NA	NA	NA	NA	NA	NA	NA
626-650	NA	NA	NA	NA	NA	NA	NA	NA
651-675	NA	NA	NA	NA	NA	NA	NA	NA
> 675	NA	NA	NA	NA	NA	NA	NA	NA

Length (mm)	1997		1998		1999		2000	
	Tagged	Recap.	Tagged	Recap.	Tagged	Recap.	Tagged	Recap.
≤ 325	517	94	400	138	105	20	105	28
326-350	78	25	211	96	135	43	73	17
351-375	37	11	42	19	101	35	47	6
376-400	18	8	17	7	24	9	37	4
401-425	4	2	7	5	4	2	13	2
426-450	4	1	1	1	3	0	3	0
451-475	2	0	2	0	1	1	NA	NA
476-500	2	2	1	1	1	0	NA	NA
501-525	NA	NA	1	NA	NA	NA	NA	NA
526-550	NA	NA	NA	NA	NA	NA	1	0
551-575	1	1	1	1	NA	NA	NA	NA
576-600	NA	NA	NA	NA	NA	NA	NA	NA
601-625	NA	NA	NA	NA	NA	NA	NA	NA
626-650	NA	NA	NA	NA	NA	NA	NA	NA
651-675	NA	NA	NA	NA	NA	NA	NA	NA
> 675	NA	NA 0	NA	NA	NA	NA	NA	NA

Length (mm)	2001		2002		Total	
	Tagged	Recap.	Tagged	Recap.	Tagged	Recap.
≤ 325	62	25	61	21	6226	1907
326-350	69	28	53	24	2669	827
351-375	68	22	67	37	1857	546
376-400	74	21	62	30	1196	271
401-425	29	7	41	18	667	149
426-450	14	3	30	14	381	73
451-475	3	0	3	1	201	43
476-500	1	1	1	1	108	22
501-525	NA	NA	NA	NA	49	8
526-550	NA	NA	NA	NA	27	5
551-575	NA	NA	NA	NA	12	4
576-600	NA	NA	NA	NA	2	1
601-625	NA	NA	NA	NA	8	0
626-650	NA	NA	NA	NA	1	0
651-675	NA	NA	NA	NA	NA	NA
> 675	NA	NA	NA	NA	NA	NA

Table 14. Length- and year- specific release and recapture data for female walleye captured by anglers in Escanaba Lake, Wisconsin. Recaptures are only included if they occurred in the same year as release. Releases and recaptures are tabulated in 25 millimeter length bins as used in the angling capture selectivity analysis presented in Myers et al. (2014).

Length (mm)	1967		1968		1969		1972	
	Tagged	Recap.	Tagged	Recap.	Tagged	Recap.	Tagged	Recap.
≤ 325	NA	NA	NA	NA	NA	NA	1	0
326-350	2	2	1	1	1	0	1	0
351-375	4	3	4	2	10	3	8	3
376-400	13	5	12	2	23	5	29	4
401-425	12	7	11	2	46	5	33	4
426-450	22	5	7	3	52	13	24	2
451-475	19	5	11	2	20	3	22	5
476-500	13	4	4	0	9	0	19	4
501-525	3	0	5	0	11	4	10	1
526-550	4	1	1	0	10	1	5	0
551-575	9	1	6	2	4	0	3	0
576-600	15	1	10	5	5	0	5	0
601-625	11	1	4	4	6	1	2	0
626-650	12	1	10	2	6	1	2	0
651-675	4	1	6	2	3	1	4	1
> 675	5	0	2	1	5	1	3	0

Length (mm)	1974		1977		1979		1980	
	Tagged	Recap.	Tagged	Recap.	Tagged	Recap.	Tagged	Recap.
≤ 325	NA	NA	NA	NA	2	0	NA	NA
326-350	NA	NA	NA	NA	12	5	1	0
351-375	4	1	16	7	43	18	22	3
376-400	21	5	14	2	88	31	38	10
401-425	54	10	14	5	58	31	51	17
426-450	56	12	5	0	60	27	34	11
451-475	56	9	8	1	43	21	39	10
476-500	49	11	25	3	33	11	22	11
501-525	27	5	26	0	24	5	23	9
526-550	22	5	19	3	19	11	16	10
551-575	23	7	13	0	33	11	14	7
576-600	10	1	9	0	25	6	26	10
601-625	10	0	4	0	23	3	16	6
626-650	9	0	2	0	12	3	16	3
651-675	4	1	5	0	5	1	6	1
> 675	3	0	3	1	9	0	10	3

Length (mm)	1981		1982		1983		1984	
	Tagged	Recap.	Tagged	Recap.	Tagged	Recap.	Tagged	Recap.
≤ 325	4	4	NA	NA	1	1	NA	NA
326-350	6	3	3	2	1	0	9	4
351-375	25	14	3	3	6	4	15	8
376-400	52	9	20	7	4	0	20	9
401-425	28	4	37	12	13	4	18	10
426-450	29	3	80	8	25	14	12	5
451-475	17	0	32	2	53	25	14	4
476-500	15	4	16	2	56	15	22	8
501-525	8	0	7	0	34	6	25	7
526-550	11	2	5	0	11	2	20	7
551-575	8	0	2	1	6	0	10	2
576-600	4	0	4	0	3	0	6	2
601-625	7	0	3	0	4	0	5	1
626-650	6	0	3	0	4	0	4	1
651-675	5	1	NA	NA	4	0	3	1
> 675	5	0	4	0	6	0	4	0

Length (mm)	1985		1986		1987		1988	
	Tagged	Recap.	Tagged	Recap.	Tagged	Recap.	Tagged	Recap.
≤ 325	5	4	NA	NA	NA	NA	3	1
326-350	22	13	1	0	1	1	5	3
351-375	35	22	7	1	9	6	10	4
376-400	44	14	58	9	3	1	10	5
401-425	20	9	66	17	5	2	7	4
426-450	9	3	42	12	6	4	4	1
451-475	5	0	13	2	12	6	4	1
476-500	11	4	2	1	12	2	1	0
501-525	6	2	5	1	4	0	2	1
526-550	12	6	8	2	2	1	7	2
551-575	17	5	9	1	NA	NA	3	0
576-600	4	2	5	0	3	0	2	0
601-625	2	0	7	2	4	0	2	0
626-650	2	0	4	1	4	0	5	1
651-675	2	0	3	0	1	0	5	0
> 675	4	0	4	0	NA	NA	2	0

Length (mm)	1989		1990		1991		1992	
	Tagged	Recap.	Tagged	Recap.	Tagged	Recap.	Tagged	Recap.
≤ 325	3	2	3	1	1	0	2	1
326-350	9	4	10	6	4	1	6	1
351-375	8	2	9	5	15	3	8	3
376-400	10	3	16	3	27	8	23	3
401-425	15	3	8	4	30	3	28	8
426-450	17	1	7	1	33	2	33	5
451-475	16	6	11	2	18	2	25	6
476-500	14	4	6	0	5	1	16	8
501-525	5	3	1	1	7	1	13	4
526-550	3	0	6	0	8	1	9	2
551-575	12	1	7	1	10	0	7	1
576-600	10	1	6	1	7	1	2	0
601-625	2	0	4	0	5	0	6	0
626-650	2	0	1	0	3	1	4	0
651-675	4	0	6	0	2	0	2	0
> 675	5	0	2	0	9	0	5	2

Length (mm)	1993		1994		1995		1996	
	Tagged	Recap.	Tagged	Recap.	Tagged	Recap.	Tagged	Recap.
≤ 325	1	1	NA	NA	4	4	8	6
326-350	1	1	2	1	6	4	4	2
351-375	4	1	2	0	21	17	4	2
376-400	6	1	2	0	19	12	8	5
401-425	10	3	4	1	16	7	12	8
426-450	8	2	10	1	9	5	11	6
451-475	15	4	17	4	10	5	11	2
476-500	11	3	10	3	7	1	7	2
501-525	5	1	17	3	8	2	4	0
526-550	4	2	11	3	8	3	6	1
551-575	NA	NA	9	2	3	0	3	0
576-600	3	1	6	2	1	0	6	1
601-625	2	2	4	1	6	0	2	0
626-650	2	2	4	0	NA	NA	1	0
651-675	NA	NA	3	0	2	0	2	0
> 675	NA	NA	5	1	2	0	1	0

Length (mm)	1997		1998		1999		2000	
	Tagged	Recap.	Tagged	Recap.	Tagged	Recap.	Tagged	Recap.
≤ 325	3	0	3	2	NA	NA	1	1
326-350	4	2	7	3	10	2	1	1
351-375	4	3	10	4	37	13	3	0
376-400	10	5	4	1	47	16	10	3
401-425	11	5	NA	NA	23	7	29	4
426-450	14	5	1	1	11	2	36	5
451-475	8	5	3	1	2	2	14	1
476-500	3	0	4	3	3	1	9	0
501-525	12	3	2	1	2	0	2	0
526-550	6	4	2	1	1	1	1	0
551-575	8	0	4	0	2	1	NA	NA
576-600	4	0	5	3	3	0	2	0
601-625	4	0	6	3	3	1	2	0
626-650	4	1	2	0	6	3	NA	NA
651-675	NA	NA	1	1	3	1	2	0
> 675	3	0	2	1	2	1	3	0

Length (mm)	2001		2002		Total	
	Tagged	Recap.	Tagged	Recap.	Tagged	Recap.
≤ 325	NA	NA	1	1	46	29
326-350	NA	NA	4	4	134	66
351-375	4	1	2	1	352	157
376-400	17	5	9	7	657	190
401-425	40	20	20	14	719	230
426-450	29	12	22	15	708	186
451-475	32	8	26	16	576	160
476-500	32	8	22	10	458	124
501-525	21	3	19	9	338	72
526-550	12	2	18	4	267	77
551-575	2	0	5	1	232	44
576-600	1	0	5	1	197	38
601-625	1	0	NA	NA	157	25
626-650	NA	NA	1	0	131	20
651-675	1	1	2	0	90	13
> 675	2	1	6	0	116	12

Table 15. Length- and year- specific release and recapture data for male walleye harvest by anglers in Squirrel Lake, Wisconsin. Recaptures are only included if they occurred within 180 days of release. Releases and recaptures are tabulated in 25 millimeter length bins. Squirrel Lake is one of the lakes included in the GLIFWC data series.

Length (mm)	1992		1993		1994		1995	
	Tagged	Recap.	Tagged	Recap.	Tagged	Recap.	Tagged	Recap.
≤ 325	661	0	938	0	1944	1	1741	2
326-350	508	0	581	0	262	0	169	0
351-375	176	0	324	0	234	1	51	0
376-400	83	0	118	0	120	0	33	0
401-425	38	0	49	0	38	0	18	0
426-450	19	0	14	0	19	0	3	0
451-475	4	0	10	0	3	0	3	0
476-500	2	0	3	0	1	0	1	0
501-525	NA	NA	3	0	2	0	1	0
526-550	1	0	NA	NA	NA	NA	NA	NA
551-575	NA	NA	NA	NA	NA	NA	NA	NA
576-600	NA	NA	NA	NA	NA	NA	NA	NA
601-625	NA	NA	NA	NA	NA	NA	NA	NA
626-650	NA	NA	NA	NA	NA	NA	NA	NA
651-675	NA	NA	NA	NA	NA	NA	NA	NA
> 675	NA	NA	NA	NA	NA	NA	NA	NA

Length (mm)	1996		1997		1998		1999	
	Tagged	Recap.	Tagged	Recap.	Tagged	Recap.	Tagged	Recap.
≤ 325	2800	4	2345	2	1996	0	1621	1
326-350	691	1	740	1	476	0	545	0
351-375	158	1	295	0	195	0	281	1
376-400	36	0	75	0	74	0	118	0
401-425	19	0	20	0	15	0	37	0
426-450	6	0	18	0	11	0	8	0
451-475	3	0	4	0	NA	NA	3	0
476-500	2	0	NA	NA	NA	NA	NA	NA
501-525	NA	NA	1	0	2	0	NA	NA
526-550	NA	NA	NA	NA	1	0	NA	NA
551-575	NA	NA	NA	NA	NA	NA	NA	NA
576-600	NA	NA	NA	NA	NA	NA	NA	NA
601-625	NA	NA	NA	NA	NA	NA	NA	NA
626-650	NA	NA	NA	NA	NA	NA	NA	NA
651-675	NA	NA	NA	NA	NA	NA	NA	NA
> 675	NA	NA	NA	NA	NA	NA	NA	NA

Length (mm)	2000		2001		2002		2003	
	Tagged	Recap.	Tagged	Recap.	Tagged	Recap.	Tagged	Recap.
≤ 325	1382	0	2039	2	2154	1	1329	5
326-350	672	0	538	1	631	2	557	0
351-375	304	0	346	2	293	0	268	0
376-400	112	0	168	0	178	0	118	0
401-425	46	0	64	0	65	0	46	0
426-450	12	0	20	0	22	0	14	0
451-475	9	0	11	0	5	0	2	0
476-500	1	0	NA	NA	3	0	1	1
501-525	1	0	NA	NA	NA	NA	1	0
526-550	NA	NA	NA	NA	NA	NA	NA	NA
551-575	NA	NA	1	0	NA	NA	NA	NA
576-600	NA	NA	NA	NA	NA	NA	NA	NA
601-625	NA	NA	NA	NA	NA	NA	NA	NA
626-650	NA	NA	NA	NA	NA	NA	NA	NA
651-675	NA	NA	NA	NA	NA	NA	NA	NA
> 675	NA	NA	NA	NA	NA	NA	NA	NA

Length (mm)	2004		2005		2006		2007	
	Tagged	Recap.	Tagged	Recap.	Tagged	Recap.	Tagged	Recap.
≤ 325	1572	6	1682	4	2168	4	2106	0
326-350	508	1	374	0	411	0	967	4
351-375	316	2	193	0	172	0	410	1
376-400	144	0	115	0	82	0	134	0
401-425	53	0	53	0	38	0	42	0
426-450	18	0	18	0	12	0	15	0
451-475	7	0	8	0	3	0	6	0
476-500	NA	NA	1	0	2	0	2	0
501-525	NA	NA	NA	NA	1	0	1	0
526-550	NA	NA	1	0	3	0	NA	NA
551-575	NA	NA	1	0	NA	NA	NA	NA
576-600	NA	NA	NA	NA	1	0	NA	NA
601-625	NA	NA	NA	NA	NA	NA	NA	NA
626-650	NA	NA	NA	NA	NA	NA	NA	NA
651-675	NA	NA	NA	NA	NA	NA	NA	NA
> 675	NA	NA	NA	NA	NA	NA	NA	NA

Length (mm)	2008		2009		2010		2011	
	Tagged	Recap.	Tagged	Recap.	Tagged	Recap.	Tagged	Recap.
≤ 325	925	5	2046	2	1700	1	1339	1
326-350	874	3	349	0	421	3	709	2
351-375	525	2	270	1	155	0	241	1
376-400	239	0	169	0	93	0	55	0
401-425	77	0	63	0	55	0	13	0
426-450	34	0	28	0	22	0	17	1
451-475	15	0	8	1	5	0	1	0
476-500	6	0	1	0	1	0	NA	NA
501-525	1	0	1	0	NA	NA	1	0
526-550	1	0	2	0	NA	NA	1	0
551-575	NA	NA	NA	NA	NA	NA	NA	NA
576-600	NA	NA	NA	NA	NA	NA	NA	NA
601-625	NA	NA	NA	NA	NA	NA	NA	NA
626-650	1	0	NA	NA	NA	NA	NA	NA
651-675	NA	NA	NA	NA	NA	NA	NA	NA
> 675	NA	NA	NA	NA	NA	NA	NA	NA

Length (mm)	2012		Total	
	Tagged	Recap.	Tagged	Recap.
≤ 325	565	1	35053	42
326-350	667	0	11650	18
351-375	415	0	5622	12
376-400	128	1	2392	1
401-425	33	0	882	0
426-450	14	0	344	1
451-475	5	0	115	1
476-500	1	0	28	1
501-525	1	0	17	0
526-550	NA	NA	10	0
551-575	NA	NA	2	0
576-600	NA	NA	1	0
601-625	NA	NA	NA	NA
626-650	NA	NA	1	0
651-675	NA	NA	NA	NA
> 675	NA	NA	NA	NA

Table 16. Length- and year- specific release and recapture data for male walleye harvest by anglers in Squaw Lake, Wisconsin. Recaptures are only included if they occurred within 180 days of release. Releases and recaptures are tabulated in 25 millimeter length bins. Squaw Lake is one of the lakes included in the GLIFWC data series.

Length (mm)	1992		1993		1994		1995	
	Tagged	Recap.	Tagged	Recap.	Tagged	Recap.	Tagged	Recap.
≤ 325	380	0	733	0	976	0	879	0
326-350	247	0	199	0	158	0	178	1
351-375	107	0	76	0	62	0	54	0
376-400	33	0	18	0	25	0	18	0
401-425	11	0	5	0	1	0	1	0
426-450	4	0	1	0	NA	NA	1	0
451-475	NA	NA	1	0	2	0	1	0
476-500	NA	NA	NA	NA	NA	NA	NA	NA
501-525	NA	NA	NA	NA	NA	NA	NA	NA
526-550	NA	NA	NA	NA	NA	NA	NA	NA
551-575	NA	NA	NA	NA	NA	NA	NA	NA
576-600	NA	NA	NA	NA	NA	NA	NA	NA
601-625	NA	NA	NA	NA	NA	NA	NA	NA
626-650	NA	NA	NA	NA	NA	NA	NA	NA
651-675	NA	NA	NA	NA	NA	NA	NA	NA
> 675	NA	NA	NA	NA	NA	NA	NA	NA

Length (mm)	1996		1997		1998		1999	
	Tagged	Recap.	Tagged	Recap.	Tagged	Recap.	Tagged	Recap.
≤ 325	464	3	234	0	892	0	900	0
326-350	134	0	59	0	112	0	215	0
351-375	51	0	27	0	58	0	74	0
376-400	13	1	11	0	31	0	21	0
401-425	8	0	4	0	6	0	3	0
426-450	2	0	3	0	1	0	1	0
451-475	NA	NA	NA	NA	1	0	NA	NA
476-500	NA	NA	1	0	NA	NA	NA	NA
501-525	2	0	NA	NA	NA	NA	NA	NA
526-550	NA	NA	NA	NA	NA	NA	NA	NA
551-575	NA	NA	NA	NA	NA	NA	NA	NA
576-600	NA	NA	NA	NA	NA	NA	NA	NA
601-625	NA	NA	NA	NA	NA	NA	NA	NA
626-650	NA	NA	NA	NA	NA	NA	NA	NA
651-675	NA	NA	NA	NA	NA	NA	NA	NA
> 675	NA	NA	NA	NA	NA	NA	NA	NA

Length (mm)	2000		2001		2002		2003	
	Tagged	Recap.	Tagged	Recap.	Tagged	Recap.	Tagged	Recap.
≤ 325	795	2	880	4	784	7	68	0
326-350	306	0	214	2	159	2	29	0
351-375	114	0	93	0	54	1	13	0
376-400	31	0	30	0	21	0	8	0
401-425	9	0	4	0	8	0	2	0
426-450	7	0	2	0	3	0	NA	NA
451-475	NA	NA	1	0	2	0	1	0
476-500	NA	NA	NA	NA	NA	NA	NA	NA
501-525	NA	NA	NA	NA	1	0	1	0
526-550	NA	NA	NA	NA	NA	NA	NA	NA
551-575	NA	NA	NA	NA	NA	NA	NA	NA
576-600	NA	NA	NA	NA	NA	NA	NA	NA
601-625	NA	NA	NA	NA	NA	NA	NA	NA
626-650	NA	NA	NA	NA	NA	NA	NA	NA
651-675	NA	NA	NA	NA	NA	NA	NA	NA
> 675	NA	NA	NA	NA	NA	NA	NA	NA

Length (mm)	2004		2005		2006		2007	
	Tagged	Recap.	Tagged	Recap.	Tagged	Recap.	Tagged	Recap.
≤ 325	698	0	861	1	1020	0	923	2
326-350	94	0	51	0	84	0	283	1
351-375	51	0	27	0	23	0	60	0
376-400	13	0	12	0	8	0	10	0
401-425	3	0	4	0	3	0	2	0
426-450	NA	NA	3	0	NA	NA	NA	NA
451-475	NA	NA	2	0	NA	NA	1	0
476-500	NA	NA	1	0	NA	NA	NA	NA
501-525	NA	NA	2	0	NA	NA	NA	NA
526-550	NA	NA	NA	NA	NA	NA	NA	NA
551-575	NA	NA	NA	NA	NA	NA	NA	NA
576-600	NA	NA	NA	NA	NA	NA	NA	NA
601-625	NA	NA	NA	NA	NA	NA	NA	NA
626-650	NA	NA	1	0	NA	NA	NA	NA
651-675	NA	NA	NA	NA	NA	NA	NA	NA
> 675	NA	NA	NA	NA	NA	NA	NA	NA

Length (mm)	2008		2009		2010		2011	
	Tagged	Recap.	Tagged	Recap.	Tagged	Recap.	Tagged	Recap.
≤ 325	646	6	579	0	414	2	390	9
326-350	245	0	244	0	170	0	248	2
351-375	71	0	102	0	74	0	105	0
376-400	17	0	18	0	21	0	55	0
401-425	2	0	2	0	NA	NA	22	0
426-450	2	0	NA	NA	NA	NA	2	0
451-475	NA	NA	1	0	NA	NA	1	0
476-500	NA	NA	NA	NA	NA	NA	NA	NA
501-525	NA	NA	NA	NA	NA	NA	NA	NA
526-550	NA	NA	NA	NA	NA	NA	1	0
551-575	NA	NA	NA	NA	NA	NA	NA	NA
576-600	NA	NA	NA	NA	NA	NA	NA	NA
601-625	NA	NA	NA	NA	NA	NA	NA	NA
626-650	NA	NA	NA	NA	NA	NA	NA	NA
651-675	NA	NA	NA	NA	NA	NA	NA	NA
> 675	NA	NA	NA	NA	NA	NA	NA	NA

Length (mm)	2012		Total	
	Tagged	Recap.	Tagged	Recap.
≤ 325	354	1	13870	37
326-350	182	0	3611	8
351-375	64	0	1360	1
376-400	22	0	436	1
401-425	5	0	105	0
426-450	NA	NA	32	0
451-475	NA	NA	14	0
476-500	NA	NA	2	0
501-525	NA	NA	6	0
526-550	NA	NA	1	0
551-575	NA	NA	NA	NA
576-600	NA	NA	NA	NA
601-625	NA	NA	NA	NA
626-650	NA	NA	1	0
651-675	NA	NA	NA	NA
> 675	NA	NA	NA	NA

Table 17. Length- and year- specific release and recapture data for male walleye harvested by anglers in Butternut Lake, Wisconsin. Recaptures are only included if they occurred within 180 days of release. Releases and recaptures are tabulated in 25 millimeter length bins. Butternut Lake is one of the lakes included in the GLIFWC data series.

Length (mm)	1993		1994		1995		1996	
	Tagged	Recap.	Tagged	Recap.	Tagged	Recap.	Tagged	Recap.
≤ 325	966	0	261	0	9	0	13	0
326-350	1071	0	599	0	69	0	27	0
351-375	585	0	582	0	416	0	30	0
376-400	66	0	163	0	637	0	136	0
401-425	18	0	24	0	236	0	300	1
426-450	28	0	18	0	38	0	185	2
451-475	20	0	8	0	10	0	24	0
476-500	10	0	1	0	4	0	5	0
501-525	1	0	1	0	2	0	1	0
526-550	2	0	NA	NA	NA	NA	NA	NA
551-575	NA	NA	NA	NA	1	0	NA	NA
576-600	NA	NA	NA	NA	NA	NA	NA	NA
601-625	NA	NA	NA	NA	NA	NA	NA	NA
626-650	NA	NA	NA	NA	NA	NA	NA	NA
651-675	NA	NA	NA	NA	NA	NA	NA	NA
> 675	NA	NA	NA	NA	NA	NA	NA	NA

Length (mm)	1997		1998		1999		2000	
	Tagged	Recap.	Tagged	Recap.	Tagged	Recap.	Tagged	Recap.
≤ 325	178	4	1134	0	623	0	218	1
326-350	33	0	145	0	581	1	300	0
351-375	40	0	58	0	289	0	375	0
376-400	54	0	62	0	103	0	319	1
401-425	128	0	154	0	98	0	154	0
426-450	143	3	200	0	181	0	140	0
451-475	57	4	102	0	105	0	128	1
476-500	5	0	11	0	26	0	39	0
501-525	1	0	4	0	11	0	13	0
526-550	NA	NA	2	0	NA	NA	2	0
551-575	NA	NA	NA	NA	NA	NA	NA	NA
576-600	NA	NA	NA	NA	NA	NA	NA	NA
601-625	NA	NA	NA	NA	NA	NA	1	0
626-650	NA	NA	NA	NA	NA	NA	NA	NA
651-675	NA	NA	NA	NA	NA	NA	NA	NA
> 675	NA	NA	NA	NA	NA	NA	NA	NA

Length (mm)	2001		2002		2003		2004	
	Tagged	Recap.	Tagged	Recap.	Tagged	Recap.	Tagged	Recap.
≤ 325	216	0	204	0	37	0	20	0
326-350	95	0	149	0	69	0	10	0
351-375	106	0	177	0	111	0	13	0
376-400	145	0	114	0	113	0	28	0
401-425	135	0	114	0	107	0	65	0
426-450	84	0	104	0	113	0	88	0
451-475	73	0	86	0	82	0	76	0
476-500	40	1	41	0	41	0	27	0
501-525	8	0	5	0	14	0	9	0
526-550	NA	NA	1	0	2	0	NA	NA
551-575	NA	NA	NA	NA	NA	NA	NA	NA
576-600	1	0	1	0	NA	NA	2	0
601-625	NA	NA	NA	NA	NA	NA	NA	NA
626-650	NA	NA	NA	NA	NA	NA	NA	NA
651-675	NA	NA	NA	NA	NA	NA	NA	NA
> 675	NA	NA	NA	NA	NA	NA	NA	NA

Length (mm)	2005		2006		2007		2008	
	Tagged	Recap.	Tagged	Recap.	Tagged	Recap.	Tagged	Recap.
≤ 325	8	0	69	0	18	0	56	0
326-350	21	0	131	2	7	0	48	0
351-375	18	1	35	0	9	0	94	0
376-400	17	0	7	0	10	0	76	0
401-425	29	0	15	0	10	0	42	0
426-450	53	0	34	1	2	0	24	0
451-475	56	0	54	0	7	0	24	0
476-500	24	0	51	1	9	0	20	0
501-525	13	0	19	1	4	0	12	0
526-550	1	0	10	0	1	0	11	0
551-575	NA	NA	2	0	NA	NA	1	0
576-600	NA	NA	NA	NA	NA	NA	NA	NA
601-625	NA	NA	NA	NA	NA	NA	NA	NA
626-650	NA	NA	NA	NA	NA	NA	NA	NA
651-675	NA	NA	NA	NA	NA	NA	NA	NA
> 675	NA	NA	NA	NA	NA	NA	NA	NA

Length (mm)	2009		2010		2011		2012	
	Tagged	Recap.	Tagged	Recap.	Tagged	Recap.	Tagged	Recap.
≤ 325	1681	1	575	0	33	0	6	0
326-350	150	0	818	1	203	0	21	0
351-375	32	0	311	0	883	1	119	0
376-400	49	0	65	0	792	0	456	0
401-425	29	0	30	0	220	0	373	0
426-450	22	0	29	0	52	0	102	0
451-475	6	0	12	0	17	0	13	0
476-500	3	0	3	0	11	0	7	0
501-525	NA	NA	6	0	2	0	1	0
526-550	3	0	1	0	NA	NA	1	0
551-575	NA	NA	1	0	NA	NA	NA	NA
576-600	NA	NA	NA	NA	NA	NA	NA	NA
601-625	NA	NA	NA	NA	NA	NA	NA	NA
626-650	NA	NA	NA	NA	NA	NA	NA	NA
651-675	NA	NA	NA	NA	NA	NA	NA	NA
> 675	NA	NA	NA	NA	NA	NA	NA	NA

Length (mm)	Total	
	Tagged	Recap.
≤ 325	6325	6
326-350	4547	4
351-375	4283	2
376-400	3412	1
401-425	2281	1
426-450	1640	6
451-475	960	5
476-500	378	2
501-525	127	1
526-550	37	0
551-575	5	0
576-600	4	0
601-625	1	0
626-650	NA	NA
651-675	NA	NA
> 675	NA	NA

Table 18. Length- and year- specific release and recapture data for male walleye harvested by anglers in Annabelle Lake, Wisconsin. Recaptures are only included if they occurred within 180 days of release. Releases and recaptures are tabulated in 25 millimeter length bins. Annabelle Lake is one of the lakes included in the GLIFWC data series.

Length (mm)	1995		1996		1997		1999	
	Tagged	Recap.	Tagged	Recap.	Tagged	Recap.	Tagged	Recap.
≤ 325	117	0	42	0	175	0	178	0
326-350	44	0	4	0	30	0	78	0
351-375	51	0	9	0	13	0	22	0
376-400	24	0	6	0	13	2	5	0
401-425	4	1	3	0	3	0	5	0
426-450	1	0	NA	NA	3	0	1	0
451-475	1	0	1	0	NA	NA	1	0
476-500	NA	NA	NA	NA	NA	NA	NA	NA
501-525	NA	NA	NA	NA	NA	NA	NA	NA
526-550	NA	NA	NA	NA	NA	NA	NA	NA
551-575	NA	NA	NA	NA	NA	NA	NA	NA
576-600	NA	NA	1	0	NA	NA	NA	NA
601-625	NA	NA	NA	NA	NA	NA	NA	NA
626-650	NA	NA	NA	NA	NA	NA	NA	NA
651-675	NA	NA	NA	NA	NA	NA	NA	NA
> 675	NA	NA	NA	NA	NA	NA	NA	NA

	2001		2002		2003		2005	
Length (mm)	Tagged	Recap.	Tagged	Recap.	Tagged	Recap.	Tagged	Recap.
≤ 325	10	0	240	0	49	0	131	0
326-350	NA	NA	63	0	12	0	25	0
351-375	1	0	31	0	9	0	9	0
376-400	NA	NA	12	0	3	0	2	0
401-425	NA	NA	3	0	NA	NA	NA	NA
426-450	NA	NA	NA	NA	NA	NA	NA	NA
451-475	NA	NA	NA	NA	NA	NA	NA	NA
476-500	NA	NA	NA	NA	1	0	NA	NA
501-525	NA	NA	1	0	NA	NA	NA	NA
526-550	NA	NA	1	0	NA	NA	NA	NA
551-575	NA	NA	1	0	NA	NA	NA	NA
576-600	NA	NA	1	0	NA	NA	NA	NA
601-625	NA	NA	NA	NA	NA	NA	NA	NA
626-650	NA	NA	NA	NA	NA	NA	NA	NA
651-675	NA	NA	NA	NA	NA	NA	NA	NA
> 675	NA	NA	NA	NA	NA	NA	NA	NA

Length (mm)	2007		2008		2009		2011	
	Tagged	Recap.	Tagged	Recap.	Tagged	Recap.	Tagged	Recap.
≤ 325	107	0	178	0	228	0	255	0
326-350	31	0	31	0	53	0	33	0
351-375	7	0	29	0	11	0	15	0
376-400	1	0	6	0	7	0	4	0
401-425	NA	NA	1	0	4	0	1	0
426-450	2	0	NA	NA	NA	NA	NA	NA
451-475	NA	NA	NA	NA	NA	NA	NA	NA
476-500	NA	NA	NA	NA	NA	NA	NA	NA
501-525	NA	NA	NA	NA	NA	NA	NA	NA
526-550	NA	NA	NA	NA	NA	NA	NA	NA
551-575	NA	NA	NA	NA	NA	NA	NA	NA
576-600	NA	NA	NA	NA	NA	NA	NA	NA
601-625	NA	NA	NA	NA	NA	NA	NA	NA
626-650	NA	NA	NA	NA	NA	NA	NA	NA
651-675	NA	NA	NA	NA	NA	NA	NA	NA
> 675	NA	NA	NA	NA	NA	NA	NA	NA

Length (mm)	Total	
	Tagged	Recap.
≤ 325	1710	0
326-350	404	0
351-375	207	0
376-400	83	2
401-425	24	1
426-450	7	0
451-475	3	0
476-500	1	0
501-525	1	0
526-550	1	0
551-575	1	0
576-600	2	0
601-625	NA	NA
626-650	NA	NA
651-675	NA	NA
> 675	NA	NA

Table 19. Length- and year- specific release and recapture data for male walleye harvested by anglers in Bass-Patterson Lake, Wisconsin. Recaptures are only included if they occurred within 180 days of release. Releases and recaptures are tabulated in 25 millimeter length bins. Bass-Patterson Lake is one of the lakes included in the GLIFWC data series.

Length (mm)	1996		1997		1998		1999	
	Tagged	Recap.	Tagged	Recap.	Tagged	Recap.	Tagged	Recap.
≤ 325	396	0	587	1	162	0	37	0
326-350	468	0	288	1	94	0	113	0
351-375	191	0	123	0	47	0	166	0
376-400	24	0	14	0	15	0	130	1
401-425	9	0	5	0	3	0	44	0
426-450	4	0	2	0	NA	NA	4	0
451-475	NA	NA	NA	NA	NA	NA	2	0
476-500	NA	NA	NA	NA	NA	NA	NA	NA
501-525	NA	NA	NA	NA	NA	NA	NA	NA
526-550	1	0	NA	NA	NA	NA	NA	NA
551-575	NA	NA	NA	NA	NA	NA	NA	NA
576-600	NA	NA	NA	NA	NA	NA	NA	NA
601-625	NA	NA	NA	NA	NA	NA	NA	NA
626-650	NA	NA	NA	NA	NA	NA	NA	NA
651-675	NA	NA	NA	NA	NA	NA	NA	NA
> 675	NA	NA	NA	NA	NA	NA	NA	NA

Length (mm)	2000		2001		2002		2003	
	Tagged	Recap.	Tagged	Recap.	Tagged	Recap.	Tagged	Recap.
≤ 325	82	0	78	0	147	0	122	0
326-350	64	1	138	0	56	0	86	0
351-375	80	0	137	0	70	0	63	0
376-400	85	1	71	1	66	0	29	0
401-425	85	0	55	0	41	0	38	0
426-450	25	0	46	1	30	0	11	0
451-475	8	0	13	0	9	0	9	0
476-500	NA	NA	3	0	2	0	4	0
501-525	NA	NA	NA	NA	NA	NA	1	0
526-550	NA	NA	NA	NA	NA	NA	NA	NA
551-575	NA	NA	NA	NA	NA	NA	NA	NA
576-600	NA	NA	NA	NA	NA	NA	NA	NA
601-625	NA	NA	NA	NA	NA	NA	NA	NA
626-650	NA	NA	NA	NA	NA	NA	NA	NA
651-675	NA	NA	NA	NA	NA	NA	NA	NA
> 675	NA	NA	NA	NA	NA	NA	NA	NA

Length (mm)	2004		2005		2006		2007	
	Tagged	Recap.	Tagged	Recap.	Tagged	Recap.	Tagged	Recap.
≤ 325	87	0	27	0	12	0	71	0
326-350	176	0	103	1	40	0	101	0
351-375	115	0	126	0	53	0	81	0
376-400	42	0	116	0	61	0	51	0
401-425	32	0	47	0	29	0	64	0
426-450	19	0	22	0	22	0	34	0
451-475	9	0	10	0	8	0	12	0
476-500	6	0	5	0	6	0	6	0
501-525	3	0	5	0	NA	NA	1	0
526-550	NA	NA	1	0	1	0	4	0
551-575	NA	NA	NA	NA	NA	NA	NA	NA
576-600	NA	NA	NA	NA	NA	NA	NA	NA
601-625	NA	NA	NA	NA	NA	NA	NA	NA
626-650	NA	NA	NA	NA	NA	NA	NA	NA
651-675	NA	NA	NA	NA	NA	NA	NA	NA
> 675	NA	NA	NA	NA	NA	NA	NA	NA

Length (mm)	2008		2009		2010		2011	
	Tagged	Recap.	Tagged	Recap.	Tagged	Recap.	Tagged	Recap.
≤ 325	28	0	79	0	32	0	79	0
326-350	68	0	165	0	67	0	113	0
351-375	74	0	65	0	88	0	86	0
376-400	87	1	30	0	69	0	73	0
401-425	67	0	39	0	28	0	44	0
426-450	37	0	42	0	13	0	13	0
451-475	19	0	18	0	9	0	4	1
476-500	6	0	6	0	2	0	1	0
501-525	3	0	2	0	NA	NA	1	0
526-550	1	0	NA	NA	1	0	1	0
551-575	NA	NA	NA	NA	NA	NA	NA	NA
576-600	NA	NA	NA	NA	NA	NA	NA	NA
601-625	NA	NA	NA	NA	NA	NA	NA	NA
626-650	NA	NA	NA	NA	NA	NA	NA	NA
651-675	NA	NA	NA	NA	NA	NA	NA	NA
> 675	NA	NA	NA	NA	NA	NA	NA	NA

Length (mm)	2012		Total	
	Tagged	Recap.	Tagged	Recap.
≤ 325	27	0	2053	1
326-350	77	0	2217	3
351-375	71	0	1636	0
376-400	48	0	1011	4
401-425	33	0	663	0
426-450	20	0	344	1
451-475	4	0	134	1
476-500	NA	NA	47	0
501-525	NA	NA	16	0
526-550	NA	NA	10	0
551-575	NA	NA	NA	NA
576-600	NA	NA	NA	NA
601-625	NA	NA	NA	NA
626-650	NA	NA	NA	NA
651-675	NA	NA	NA	NA
> 675	NA	NA	NA	NA

Table 20. Length- and year- specific release and recapture data for male walleye harvested by anglers in Kentuck Lake, Wisconsin. Recaptures are only included if they occurred within 180 days of release. Releases and recaptures are tabulated in 25 millimeter length bins. Kentuck Lake is one of the lakes included in the GLIFWC data series.

Length (mm)	1992		1993		1994		1995	
	Tagged	Recap.	Tagged	Recap.	Tagged	Recap.	Tagged	Recap.
≤ 325	12	0	1	0	2	0	1	0
326-350	50	0	9	0	5	0	NA	NA
351-375	221	0	49	0	29	0	4	0
376-400	346	0	172	0	68	0	12	0
401-425	414	0	244	0	151	0	21	0
426-450	225	0	281	0	200	0	60	0
451-475	83	0	212	0	190	0	68	0
476-500	29	0	78	0	103	0	40	0
501-525	14	0	35	0	58	0	15	0
526-550	2	0	8	0	19	0	6	0
551-575	NA	NA	NA	NA	6	0	4	0
576-600	1	0	1	0	3	0	1	0
601-625	1	0	NA	NA	1	0	1	0
626-650	NA	NA	NA	NA	NA	NA	NA	NA
651-675	2	0	NA	NA	1	0	NA	NA
> 675	NA	NA	NA	NA	NA	NA	NA	NA

Length (mm)	1996		1997		1998		1999	
	Tagged	Recap.	Tagged	Recap.	Tagged	Recap.	Tagged	Recap.
≤ 325	NA	NA	NA	NA	NA	NA	31	0
326-350	2	0	NA	NA	NA	NA	21	0
351-375	3	0	NA	NA	NA	NA	5	0
376-400	1	0	NA	NA	NA	NA	3	0
401-425	NA	NA	1	0	NA	NA	2	0
426-450	1	0	1	0	NA	NA	5	0
451-475	1	0	NA	NA	NA	NA	1	0
476-500	NA	NA	NA	NA	2	0	NA	NA
501-525	1	0	NA	NA	NA	NA	NA	NA
526-550	1	0	1	0	NA	NA	2	0
551-575	NA	NA	NA	NA	NA	NA	1	0
576-600	NA	NA	NA	NA	NA	NA	NA	NA
601-625	NA	NA	NA	NA	1	0	1	0
626-650	NA	NA	NA	NA	NA	NA	NA	NA
651-675	NA	NA	NA	NA	NA	NA	1	0
> 675	NA	NA	NA	NA	NA	NA	NA	NA

Length (mm)	2000		2001		2002		2003	
	Tagged	Recap.	Tagged	Recap.	Tagged	Recap.	Tagged	Recap.
≤ 325	11	0	504	0	806	0	979	0
326-350	20	0	44	0	431	0	734	0
351-375	19	0	2	0	10	0	1072	0
376-400	24	0	10	0	3	0	199	0
401-425	23	0	10	0	7	0	17	0
426-450	15	0	9	0	5	0	2	0
451-475	12	0	9	0	10	0	3	0
476-500	3	0	5	0	15	0	3	0
501-525	2	0	NA	NA	7	0	2	0
526-550	1	0	NA	NA	4	0	1	0
551-575	1	0	2	0	2	0	NA	NA
576-600	NA	NA	NA	NA	3	0	1	0
601-625	NA	NA	NA	NA	NA	NA	NA	NA
626-650	NA	NA	NA	NA	1	0	NA	NA
651-675	NA	NA	NA	NA	NA	NA	NA	NA
> 675	NA	NA	NA	NA	NA	NA	NA	NA

Length (mm)	2004		2005		2006		2007	
	Tagged	Recap.	Tagged	Recap.	Tagged	Recap.	Tagged	Recap.
≤ 325	256	0	367	0	2450	2	847	0
326-350	406	0	401	0	401	1	877	0
351-375	1396	0	939	0	291	0	300	1
376-400	1183	0	1555	0	627	1	170	0
401-425	420	0	660	0	311	0	185	0
426-450	73	0	118	0	62	1	67	0
451-475	20	0	10	0	12	0	13	0
476-500	15	0	4	0	2	0	1	0
501-525	7	0	4	0	2	0	NA	NA
526-550	6	0	4	0	1	0	NA	NA
551-575	6	0	3	0	3	0	NA	NA
576-600	3	0	1	0	NA	NA	NA	NA
601-625	1	0	1	0	NA	NA	NA	NA
626-650	1	0	1	0	NA	NA	NA	NA
651-675	NA	NA	NA	NA	NA	NA	NA	NA
> 675	6	0	NA	NA	NA	NA	NA	NA

Length (mm)	2008		2009		2010		2011	
	Tagged	Recap.	Tagged	Recap.	Tagged	Recap.	Tagged	Recap.
≤ 325	3090	4	2855	2	883	4	509	1
326-350	513	3	350	0	175	1	46	0
351-375	303	0	141	1	86	0	30	0
376-400	120	1	71	0	39	0	24	0
401-425	63	0	32	0	21	0	15	0
426-450	30	0	15	0	13	0	4	0
451-475	8	0	16	0	9	0	4	0
476-500	1	0	1	0	7	0	NA	NA
501-525	2	0	NA	NA	NA	NA	NA	NA
526-550	NA	NA	1	0	NA	NA	NA	NA
551-575	NA	NA	NA	NA	NA	NA	NA	NA
576-600	NA	NA	NA	NA	NA	NA	NA	NA
601-625	NA	NA	NA	NA	NA	NA	NA	NA
626-650	NA	NA	NA	NA	NA	NA	NA	NA
651-675	NA	NA	NA	NA	NA	NA	NA	NA
> 675	NA	NA	NA	NA	NA	NA	NA	NA

Length (mm)	2012		Total	
	Tagged	Recap.	Tagged	Recap.
≤ 325	135	0	13739	13
326-350	216	1	4701	6
351-375	133	0	5033	2
376-400	58	0	4685	2
401-425	32	0	2629	0
426-450	15	0	1201	1
451-475	7	0	688	0
476-500	2	0	311	0
501-525	NA	NA	149	0
526-550	1	0	58	0
551-575	NA	NA	28	0
576-600	NA	NA	14	0
601-625	NA	NA	7	0
626-650	NA	NA	3	0
651-675	NA	NA	4	0
> 675	NA	NA	6	0

Table 21. Length- and year- specific release and recapture data for male walleye harvested by anglers in Bearskin Lake, Wisconsin. Recaptures are only included if they occurred within 180 days of release. Releases and recaptures are tabulated in 25 millimeter length bins. Bearskin Lake is one of the lakes included in the GLIFWC data series.

Length (mm)	1998		2000		2002		2003	
	Tagged	Recap.	Tagged	Recap.	Tagged	Recap.	Tagged	Recap.
≤ 325	1107	0	8	0	480	1	420	0
326-350	66	0	32	0	271	0	163	0
351-375	11	0	46	1	190	1	129	0
376-400	3	0	30	1	113	2	101	0
401-425	3	0	23	0	59	0	73	0
426-450	1	0	7	0	33	0	36	0
451-475	NA	NA	1	0	13	0	20	0
476-500	NA	NA	1	0	3	0	1	0
501-525	NA	NA	NA	NA	2	0	3	0
526-550	NA	NA	NA	NA	NA	NA	NA	NA
551-575	NA	NA	NA	NA	NA	NA	NA	NA
576-600	NA	NA	NA	NA	NA	NA	1	0
601-625	NA	NA	NA	NA	NA	NA	NA	NA
626-650	NA	NA	NA	NA	NA	NA	NA	NA
651-675	NA	NA	NA	NA	NA	NA	NA	NA
> 675	NA	NA	NA	NA	NA	NA	NA	NA

Length (mm)	2004		2006		2008		2010	
	Tagged	Recap.	Tagged	Recap.	Tagged	Recap.	Tagged	Recap.
≤ 325	1424	0	582	0	684	6	919	11
326-350	78	0	449	0	269	9	417	13
351-375	44	0	241	0	199	4	178	2
376-400	33	0	61	0	132	2	58	2
401-425	22	0	10	0	54	2	31	0
426-450	13	0	4	0	15	0	15	0
451-475	5	0	4	0	3	0	1	0
476-500	3	0	2	0	3	0	1	0
501-525	1	0	2	0	NA	NA	NA	NA
526-550	NA	NA	NA	NA	NA	NA	NA	NA
551-575	NA	NA	NA	NA	NA	NA	NA	NA
576-600	NA	NA	NA	NA	NA	NA	NA	NA
601-625	NA	NA	NA	NA	NA	NA	NA	NA
626-650	NA	NA	NA	NA	NA	NA	NA	NA
651-675	NA	NA	NA	NA	NA	NA	NA	NA
> 675	NA	NA	NA	NA	NA	NA	NA	NA

Length (mm)	2012		Total	
	Tagged	Recap.	Tagged	Recap.
≤ 325	471	1	6094	19
326-350	490	1	2234	22
351-375	363	1	1401	9
376-400	125	0	656	7
401-425	39	0	314	2
426-450	11	0	135	0
451-475	1	0	48	0
476-500	2	0	16	0
501-525	NA	NA	8	0
526-550	NA	NA	NA	NA
551-575	NA	NA	NA	NA
576-600	NA	NA	1	0
601-625	NA	NA	NA	NA
626-650	NA	NA	NA	NA
651-675	NA	NA	NA	NA
> 675	NA	NA	NA	NA

Table 22. Length- and year- specific release and recapture data for male walleye harvested by anglers in Sherman Lake, Wisconsin. Recaptures are only included if they occurred within 180 days of release. Releases and recaptures are tabulated in 25 millimeter length bins. Sherman Lake is one of the lakes included in the GLIFWC data series.

Length (mm)	1995		1996		1997		1998	
	Tagged	Recap.	Tagged	Recap.	Tagged	Recap.	Tagged	Recap.
≤ 325	131	0	39	0	65	0	231	0
326-350	127	0	71	0	33	0	26	0
351-375	72	0	80	0	41	0	28	0
376-400	52	0	54	0	38	0	26	0
401-425	40	0	24	0	19	0	23	0
426-450	19	0	14	0	12	0	9	0
451-475	7	0	2	0	6	0	4	0
476-500	5	0	3	0	1	0	NA	NA
501-525	NA	NA	NA	NA	NA	NA	NA	NA
526-550	NA	NA	NA	NA	NA	NA	NA	NA
551-575	NA	NA	NA	NA	NA	NA	NA	NA
576-600	NA	NA	NA	NA	NA	NA	NA	NA
601-625	NA	NA	NA	NA	NA	NA	NA	NA
626-650	NA	NA	NA	NA	NA	NA	NA	NA
651-675	NA	NA	NA	NA	NA	NA	NA	NA
> 675	NA	NA	NA	NA	NA	NA	NA	NA

Length (mm)	1999		2000		2001		2002	
	Tagged	Recap.	Tagged	Recap.	Tagged	Recap.	Tagged	Recap.
≤ 325	119	0	108	0	49	0	56	0
326-350	99	0	41	0	26	0	13	0
351-375	50	0	28	0	19	0	8	0
376-400	24	0	32	0	9	0	7	0
401-425	27	0	25	0	20	0	2	0
426-450	16	0	18	0	17	0	5	0
451-475	3	0	7	0	11	0	6	0
476-500	2	0	5	0	4	0	2	0
501-525	NA	NA	3	0	NA	NA	2	0
526-550	NA	NA	NA	NA	NA	NA	NA	NA
551-575	NA	NA	NA	NA	NA	NA	NA	NA
576-600	NA	NA	NA	NA	NA	NA	NA	NA
601-625	NA	NA	NA	NA	NA	NA	NA	NA
626-650	NA	NA	NA	NA	NA	NA	NA	NA
651-675	NA	NA	NA	NA	NA	NA	NA	NA
> 675	NA	NA	NA	NA	NA	NA	NA	NA

Length (mm)	2003		2004		2005		2006	
	Tagged	Recap.	Tagged	Recap.	Tagged	Recap.	Tagged	Recap.
≤ 325	140	0	16	0	71	0	44	0
326-350	81	0	7	0	16	0	31	0
351-375	31	0	6	0	9	0	19	0
376-400	30	0	2	0	18	0	9	0
401-425	17	0	4	0	6	0	14	0
426-450	9	0	3	0	2	0	7	0
451-475	6	0	5	0	4	0	9	0
476-500	2	0	2	0	2	0	2	0
501-525	2	0	2	0	1	0	5	0
526-550	NA	NA	1	0	2	0	4	0
551-575	NA	NA	NA	NA	NA	NA	4	0
576-600	NA	NA	NA	NA	NA	NA	NA	NA
601-625	NA	NA	NA	NA	NA	NA	NA	NA
626-650	NA	NA	NA	NA	NA	NA	NA	NA
651-675	NA	NA	NA	NA	NA	NA	NA	NA
> 675	NA	NA	NA	NA	NA	NA	NA	NA

Length (mm)	2007		2008		2009		2010	
	Tagged	Recap.	Tagged	Recap.	Tagged	Recap.	Tagged	Recap.
≤ 325	60	0	185	0	110	0	252	1
326-350	15	0	18	0	16	0	16	0
351-375	11	0	3	0	9	0	5	0
376-400	7	0	1	0	2	0	5	0
401-425	5	0	1	0	2	0	NA	NA
426-450	2	0	1	0	NA	NA	NA	NA
451-475	1	0	2	0	NA	NA	NA	NA
476-500	NA	NA	NA	NA	1	0	NA	NA
501-525	NA	NA	NA	NA	NA	NA	NA	NA
526-550	NA	NA	NA	NA	NA	NA	NA	NA
551-575	2	0	NA	NA	NA	NA	NA	NA
576-600	NA	NA	NA	NA	NA	NA	NA	NA
601-625	NA	NA	NA	NA	NA	NA	NA	NA
626-650	NA	NA	NA	NA	NA	NA	NA	NA
651-675	NA	NA	NA	NA	NA	NA	NA	NA
> 675	NA	NA	NA	NA	NA	NA	NA	NA

Length (mm)	2011		2012		Total	
	Tagged	Recap.	Tagged	Recap.	Tagged	Recap.
≤ 325	90	0	108	0	1874	1
326-350	19	0	24	0	679	0
351-375	4	0	5	0	428	0
376-400	NA	NA	3	0	319	0
401-425	NA	NA	NA	NA	229	0
426-450	NA	NA	NA	NA	134	0
451-475	NA	NA	NA	NA	73	0
476-500	NA	NA	NA	NA	31	0
501-525	NA	NA	NA	NA	15	0
526-550	NA	NA	NA	NA	7	0
551-575	NA	NA	NA	NA	6	0
576-600	NA	NA	NA	NA	NA	NA
601-625	NA	NA	NA	NA	NA	NA
626-650	NA	NA	NA	NA	NA	NA
651-675	NA	NA	NA	NA	NA	NA
> 675	NA	NA	NA	NA	NA	NA

Table 23. Length- and year- specific release and recapture data for female walleye harvested by anglers in Squirrel Lake, Wisconsin. Recaptures are only included if they occurred within 180 days of release. Releases and recaptures are tabulated in 25 millimeter length bins. Squirrel Lake is one of the lakes included in the GLIFWC data series.

Length (mm)	1992		1993		1994		1995	
	Tagged	Recap.	Tagged	Recap.	Tagged	Recap.	Tagged	Recap.
≤ 325	14	0	2	0	3	0	3	0
326-350	13	0	8	0	1	0	1	0
351-375	22	0	12	0	5	0	2	0
376-400	13	0	27	0	11	0	4	0
401-425	15	0	24	0	9	0	3	0
426-450	12	0	19	0	10	0	11	0
451-475	9	0	10	0	13	0	7	1
476-500	13	0	11	0	5	0	12	0
501-525	4	0	5	0	2	0	3	0
526-550	3	0	6	0	1	1	6	0
551-575	7	0	7	0	3	0	1	0
576-600	7	0	5	0	8	0	1	0
601-625	4	0	3	0	3	0	1	0
626-650	NA	NA	3	0	2	0	1	0
651-675	2	0	3	0	1	0	1	0
> 675	NA	NA	NA	NA	NA	NA	NA	NA

Length (mm)	1996		1997		1998		1999	
	Tagged	Recap.	Tagged	Recap.	Tagged	Recap.	Tagged	Recap.
≤ 325	18	0	3	0	3	0	1	0
326-350	18	0	10	0	5	0	1	0
351-375	22	0	23	1	11	0	14	0
376-400	11	0	14	0	21	0	20	0
401-425	5	0	13	0	17	0	13	0
426-450	3	0	8	0	12	0	20	0
451-475	NA	NA	10	0	7	0	21	0
476-500	NA	NA	13	0	3	0	11	0
501-525	3	0	11	0	6	0	12	0
526-550	NA	NA	9	0	3	0	6	0
551-575	1	0	12	0	5	0	7	0
576-600	NA	NA	6	0	2	0	8	0
601-625	1	0	1	0	2	0	5	0
626-650	NA	NA	3	1	1	0	1	0
651-675	NA	NA	1	0	NA	NA	NA	NA
> 675	1	0	1	0	1	0	NA	NA

Length (mm)	2000		2001		2002		2003	
	Tagged	Recap.	Tagged	Recap.	Tagged	Recap.	Tagged	Recap.
≤ 325	2	0	2	0	NA	NA	1	0
326-350	NA	NA	2	0	1	0	2	0
351-375	3	0	7	0	4	0	5	0
376-400	5	0	12	0	6	0	12	0
401-425	7	0	16	0	9	0	5	1
426-450	3	0	23	1	13	0	9	0
451-475	2	0	13	0	11	0	18	0
476-500	5	0	23	0	10	1	8	0
501-525	1	0	14	0	12	0	11	0
526-550	2	0	2	0	9	0	11	0
551-575	1	0	9	0	7	0	4	0
576-600	NA	NA	4	0	7	0	3	0
601-625	1	0	1	0	3	0	1	0
626-650	NA	NA	1	0	1	0	2	0
651-675	NA	NA	NA	NA	NA	NA	NA	NA
> 675	NA	NA	1	0	1	0	1	0

Length (mm)	2004		2005		2006		2007	
	Tagged	Recap.	Tagged	Recap.	Tagged	Recap.	Tagged	Recap.
≤ 325	1	0	NA	NA	NA	NA	1	0
326-350	5	0	5	0	4	0	3	0
351-375	5	0	14	0	10	0	4	0
376-400	9	0	17	0	9	0	5	0
401-425	14	0	21	0	10	0	8	0
426-450	6	0	28	0	12	0	6	0
451-475	13	0	32	0	15	0	13	1
476-500	21	0	22	0	11	0	12	0
501-525	11	0	28	0	19	0	10	0
526-550	14	0	18	0	10	0	18	0
551-575	13	0	18	0	16	0	14	0
576-600	3	0	5	0	12	0	8	0
601-625	4	0	6	0	4	0	10	0
626-650	3	0	2	0	2	0	1	0
651-675	1	0	1	0	3	0	2	0
> 675	3	0	NA	NA	NA	NA	1	0

Length (mm)	2008		2009		2010		2011	
	Tagged	Recap.	Tagged	Recap.	Tagged	Recap.	Tagged	Recap.
≤ 325	8	0	NA	NA	NA	NA	3	0
326-350	22	0	5	0	3	0	20	0
351-375	56	1	13	0	1	0	43	1
376-400	53	0	15	0	4	0	16	0
401-425	41	0	17	0	5	0	6	0
426-450	38	0	19	0	5	0	4	0
451-475	26	0	22	1	2	0	2	0
476-500	27	0	22	0	9	0	5	0
501-525	27	0	14	0	12	0	2	0
526-550	23	1	12	0	5	0	1	0
551-575	18	0	8	0	4	0	6	0
576-600	11	0	6	0	4	0	NA	NA
601-625	6	0	3	0	4	0	2	0
626-650	10	0	2	0	2	0	1	0
651-675	3	0	1	0	4	0	NA	NA
> 675	3	0	1	0	1	0	NA	NA

Length (mm)	2012		Total	
	Tagged	Recap.	Tagged	Recap.
≤ 325	NA	NA	65	0
326-350	4	0	133	0
351-375	4	0	280	3
376-400	9	0	293	0
401-425	15	0	273	1
426-450	11	0	272	1
451-475	5	0	251	3
476-500	3	0	246	1
501-525	4	0	211	0
526-550	7	0	166	2
551-575	4	0	165	0
576-600	2	0	102	0
601-625	2	0	67	0
626-650	1	0	39	1
651-675	3	0	26	0
> 675	1	0	16	0

Table 24. Length- and year- specific release and recapture data for female walleye harvested by anglers in Squaw Lake, Wisconsin. Recaptures are only included if they occurred within 180 days of release. Releases and recaptures are tabulated in 25 millimeter length bins. Squaw Lake is one of the lakes included in the GLIFWC data series.

Length (mm)	1992		1993		1994		1995	
	Tagged	Recap.	Tagged	Recap.	Tagged	Recap.	Tagged	Recap.
≤ 325	11	0	15	0	11	0	11	0
326-350	37	0	27	0	19	0	19	0
351-375	37	0	34	0	26	0	16	0
376-400	16	0	14	0	17	0	14	0
401-425	7	0	7	0	9	0	2	0
426-450	4	0	7	0	5	0	2	0
451-475	1	0	3	0	1	0	NA	NA
476-500	NA	NA	NA	NA	NA	NA	NA	NA
501-525	1	0	1	0	1	0	NA	NA
526-550	NA	NA	NA	NA	1	0	NA	NA
551-575	NA	NA	NA	NA	NA	NA	2	0
576-600	1	0	NA	NA	NA	NA	NA	NA
601-625	NA	NA	NA	NA	1	0	1	0
626-650	NA	NA	NA	NA	NA	NA	NA	NA
651-675	NA	NA	NA	NA	NA	NA	NA	NA
> 675	NA	NA	NA	NA	NA	NA	NA	NA

Length (mm)	1996		1997		1998		1999	
	Tagged	Recap.	Tagged	Recap.	Tagged	Recap.	Tagged	Recap.
≤ 325	4	0	3	0	5	0	16	0
326-350	13	0	16	0	17	0	33	0
351-375	16	0	14	0	25	0	31	0
376-400	17	0	15	0	18	0	39	0
401-425	4	0	4	0	10	0	22	0
426-450	2	0	3	0	7	0	15	0
451-475	NA	NA	1	0	3	0	3	0
476-500	NA	NA	1	0	1	0	2	0
501-525	NA	NA	NA	NA	3	0	NA	NA
526-550	1	0	NA	NA	NA	NA	2	0
551-575	NA	NA	NA	NA	NA	NA	NA	NA
576-600	NA	NA	1	0	NA	NA	1	0
601-625	NA	NA	NA	NA	NA	NA	NA	NA
626-650	NA	NA	NA	NA	NA	NA	NA	NA
651-675	NA	NA	NA	NA	1	0	NA	NA
> 675	NA	NA	NA	NA	1	0	NA	NA

Length (mm)	2000		2001		2002		2003	
	Tagged	Recap.	Tagged	Recap.	Tagged	Recap.	Tagged	Recap.
≤ 325	3	0	5	0	4	0	6	0
326-350	10	0	25	0	26	0	20	0
351-375	13	0	20	0	32	2	16	1
376-400	8	0	15	0	25	0	16	2
401-425	4	0	7	0	16	1	5	0
426-450	2	0	3	0	8	0	10	0
451-475	1	0	3	0	4	0	5	0
476-500	NA	NA	NA	NA	2	0	2	0
501-525	NA	NA	NA	NA	2	0	NA	NA
526-550	NA	NA	NA	NA	2	0	NA	NA
551-575	1	0	1	0	1	0	NA	NA
576-600	1	0	NA	NA	1	0	NA	NA
601-625	1	0	NA	NA	1	0	NA	NA
626-650	NA	NA	NA	NA	2	0	1	0
651-675	NA	NA	NA	NA	NA	NA	NA	NA
> 675	NA	NA	NA	NA	NA	NA	1	0

Length (mm)	2004		2005		2006		2007	
	Tagged	Recap.	Tagged	Recap.	Tagged	Recap.	Tagged	Recap.
≤ 325	7	0	10	0	13	0	9	0
326-350	23	0	8	0	13	0	30	0
351-375	28	0	16	0	22	0	24	0
376-400	10	0	10	0	10	0	13	0
401-425	10	0	8	0	7	0	5	0
426-450	3	0	4	0	6	0	2	0
451-475	4	0	6	0	2	0	1	0
476-500	1	0	4	0	1	0	NA	NA
501-525	NA	NA	1	0	2	0	NA	NA
526-550	NA	NA	NA	NA	NA	NA	1	0
551-575	1	0	NA	NA	NA	NA	2	0
576-600	1	0	NA	NA	NA	NA	NA	NA
601-625	NA	NA	NA	NA	NA	NA	1	0
626-650	NA	NA	NA	NA	NA	NA	NA	NA
651-675	NA	NA	1	0	NA	NA	NA	NA
> 675	NA	NA	1	0	1	0	NA	NA

	2008		2009		2010		2011	
Length (mm)	Tagged	Recap.	Tagged	Recap.	Tagged	Recap.	Tagged	Recap.
≤ 325	8	0	16	0	3	0	NA	NA
326-350	45	0	20	0	22	0	12	0
351-375	90	0	44	0	40	0	24	0
376-400	54	0	43	0	26	0	28	0
401-425	14	0	18	0	10	0	15	1
426-450	2	0	5	0	8	0	12	0
451-475	3	0	1	0	NA	NA	4	0
476-500	1	0	2	0	1	0	2	0
501-525	NA	NA	NA	NA	NA	NA	1	0
526-550	NA	NA	NA	NA	NA	NA	NA	NA
551-575	NA	NA	1	0	NA	NA	NA	NA
576-600	NA	NA	1	0	NA	NA	2	0
601-625	NA	NA	NA	NA	NA	NA	NA	NA
626-650	1	0	NA	NA	NA	NA	NA	NA
651-675	NA	NA	1	0	NA	NA	2	0
> 675	NA	NA	NA	NA	NA	NA	NA	NA

Length (mm)	2012		Total	
	Tagged	Recap.	Tagged	Recap.
≤ 325	4	0	164	0
326-350	13	0	448	0
351-375	33	0	601	3
376-400	21	0	429	2
401-425	13	0	197	2
426-450	5	0	115	0
451-475	NA	NA	46	0
476-500	NA	NA	20	0
501-525	NA	NA	12	0
526-550	NA	NA	7	0
551-575	NA	NA	9	0
576-600	NA	NA	9	0
601-625	NA	NA	5	0
626-650	NA	NA	4	0
651-675	NA	NA	5	0
> 675	NA	NA	4	0

Table 25. Length- and year- specific release and recapture data for female walleye harvested by anglers in Butternut Lake, Wisconsin. Recaptures are only included if they occurred within 180 days of release. Releases and recaptures are tabulated in 25 millimeter length bins. Butternut Lake is one of the lakes included in the GLIFWC data series.

Length (mm)	1993		1994		1995		1996	
	Tagged	Recap.	Tagged	Recap.	Tagged	Recap.	Tagged	Recap.
≤ 325	5	0	NA	NA	1	0	NA	NA
326-350	19	0	NA	NA	NA	NA	NA	NA
351-375	50	0	9	0	2	0	NA	NA
376-400	21	0	10	0	25	0	NA	NA
401-425	8	0	3	0	64	1	4	0
426-450	2	0	1	0	39	0	7	0
451-475	1	0	NA	NA	14	0	10	0
476-500	NA	NA	NA	NA	3	0	12	0
501-525	3	0	NA	NA	NA	NA	8	0
526-550	2	0	1	0	NA	NA	1	0
551-575	2	0	NA	NA	1	0	NA	NA
576-600	1	0	NA	NA	NA	NA	NA	NA
601-625	NA	NA	NA	NA	NA	NA	NA	NA
626-650	NA	NA	NA	NA	NA	NA	NA	NA
651-675	NA	NA	NA	NA	NA	NA	NA	NA
> 675	NA	NA	NA	NA	NA	NA	NA	NA

Length (mm)	1997		1998		1999		2000	
	Tagged	Recap.	Tagged	Recap.	Tagged	Recap.	Tagged	Recap.
≤ 325	NA	NA	NA	NA	NA	NA	NA	NA
326-350	NA	NA	NA	NA	2	0	NA	NA
351-375	NA	NA	NA	NA	3	0	NA	NA
376-400	NA	NA	NA	NA	4	0	6	0
401-425	NA	NA	2	0	4	0	11	0
426-450	5	0	1	0	10	0	19	0
451-475	27	2	2	0	6	0	8	0
476-500	79	7	2	0	7	0	7	0
501-525	137	4	8	0	12	0	5	0
526-550	105	4	20	0	23	0	7	0
551-575	42	2	17	0	28	0	12	0
576-600	9	0	9	0	16	0	13	1
601-625	NA	NA	NA	NA	6	0	15	0
626-650	NA	NA	NA	NA	3	0	2	0
651-675	NA	NA	NA	NA	1	0	1	0
> 675	1	0	NA	NA	1	0	1	0

	2001		2002		2003		2004	
Length (mm)	Tagged	Recap.	Tagged	Recap.	Tagged	Recap.	Tagged	Recap.
≤ 325	NA	NA	NA	NA	NA	NA	NA	NA
326-350	NA	NA	NA	NA	NA	NA	NA	NA
351-375	2	0	NA	NA	NA	NA	NA	NA
376-400	NA	NA	NA	NA	NA	NA	1	0
401-425	25	0	5	0	2	0	1	0
426-450	38	0	15	0	15	0	9	0
451-475	50	0	28	0	14	0	25	0
476-500	21	0	28	0	17	0	44	0
501-525	12	0	20	0	25	0	72	0
526-550	15	0	6	0	8	0	59	0
551-575	15	1	3	0	13	0	44	0
576-600	13	0	5	0	3	0	15	0
601-625	9	1	4	0	2	0	7	0
626-650	3	0	3	0	1	0	8	0
651-675	NA	NA	1	0	NA	NA	2	0
> 675	1	0	1	0	NA	NA	2	0

	2005		2006		2007		2008	
Length (mm)	Tagged	Recap.	Tagged	Recap.	Tagged	Recap.	Tagged	Recap.
≤ 325	NA	NA	NA	NA	NA	NA	NA	NA
326-350	NA	NA	NA	NA	NA	NA	NA	NA
351-375	NA	NA	NA	NA	NA	NA	NA	NA
376-400	NA	NA	NA	NA	NA	NA	NA	NA
401-425	NA	NA	NA	NA	NA	NA	1	0
426-450	NA	NA	1	0	NA	NA	NA	NA
451-475	3	0	4	0	NA	NA	1	0
476-500	6	0	7	0	1	0	NA	NA
501-525	15	0	10	0	1	0	4	0
526-550	15	1	17	0	NA	NA	1	0
551-575	5	0	17	0	3	0	2	0
576-600	3	0	19	0	2	0	8	0
601-625	3	0	7	0	NA	NA	6	0
626-650	1	0	2	0	NA	NA	10	0
651-675	NA	NA	4	0	NA	NA	4	0
> 675	NA	NA	NA	NA	NA	NA	6	0

	2009		2010		2011		2012	
Length (mm)	Tagged	Recap.	Tagged	Recap.	Tagged	Recap.	Tagged	Recap.
≤ 325	NA	NA	NA	NA	NA	NA	NA	NA
326-350	NA	NA	NA	NA	NA	NA	NA	NA
351-375	NA	NA	NA	NA	4	0	NA	NA
376-400	NA	NA	1	0	24	0	1	0
401-425	NA	NA	3	0	28	0	7	0
426-450	1	0	NA	NA	18	0	16	0
451-475	NA	NA	NA	NA	6	0	11	0
476-500	NA	NA	NA	NA	NA	NA	1	0
501-525	1	0	NA	NA	NA	NA	2	0
526-550	2	0	1	0	2	0	NA	NA
551-575	NA	NA	NA	NA	NA	NA	NA	NA
576-600	2	0	NA	NA	1	0	NA	NA
601-625	1	0	1	0	NA	NA	NA	NA
626-650	2	0	2	0	NA	NA	NA	NA
651-675	NA	NA	2	0	NA	NA	NA	NA
> 675	NA	NA	1	0	NA	NA	NA	NA

Length (mm)	Total	
	Tagged	Recap.
≤ 325	6	0
326-350	21	0
351-375	70	0
376-400	93	0
401-425	168	1
426-450	197	0
451-475	210	2
476-500	235	7
501-525	335	4
526-550	285	5
551-575	204	3
576-600	119	1
601-625	61	1
626-650	37	0
651-675	15	0
> 675	14	0

Table 26. Length- and year- specific release and recapture data for female walleye harvested by anglers in Annabelle Lake, Wisconsin. Recaptures are only included if they occurred within 180 days of release. Releases and recaptures are tabulated in 25 millimeter length bins. Annabelle Lake is one of the lakes included in the GLIFWC data series.

Length (mm)	1995		1996		1997		1999	
	Tagged	Recap.	Tagged	Recap.	Tagged	Recap.	Tagged	Recap.
≤ 325	NA	NA	NA	NA	1	0	2	0
326-350	2	0	NA	NA	1	0	15	0
351-375	5	0	7	0	1	0	14	0
376-400	8	0	8	0	5	0	3	0
401-425	9	0	7	0	1	0	NA	NA
426-450	1	0	9	1	1	0	1	0
451-475	2	0	7	0	2	0	1	0
476-500	2	1	2	0	2	0	NA	NA
501-525	1	0	3	0	2	0	1	0
526-550	2	0	2	0	NA	NA	3	0
551-575	NA	NA	1	0	1	0	NA	NA
576-600	NA	NA	1	0	1	0	2	0
601-625	NA	NA	1	0	NA	NA	1	0
626-650	NA	NA	1	0	NA	NA	1	0
651-675	NA	NA	1	0	1	0	NA	NA
> 675	2	0	3	0	1	0	NA	NA

Length (mm)	2001		2002		2003		2005	
	Tagged	Recap.	Tagged	Recap.	Tagged	Recap.	Tagged	Recap.
≤ 325	NA	NA	2	0	NA	NA	NA	NA
326-350	NA	NA	5	0	4	0	NA	NA
351-375	NA	NA	12	0	5	0	3	0
376-400	1	0	7	0	4	0	2	0
401-425	NA	NA	5	0	2	0	1	0
426-450	NA	NA	3	0	4	0	1	0
451-475	NA	NA	3	0	1	0	NA	NA
476-500	NA	NA	NA	NA	1	0	NA	NA
501-525	NA	NA	4	0	NA	NA	NA	NA
526-550	NA	NA	2	0	NA	NA	NA	NA
551-575	NA	NA	NA	NA	NA	NA	NA	NA
576-600	NA	NA	NA	NA	1	0	NA	NA
601-625	NA	NA	NA	NA	NA	NA	NA	NA
626-650	NA	NA	NA	NA	NA	NA	1	0
651-675	NA	NA	NA	NA	NA	NA	NA	NA
> 675	NA	NA	NA	NA	1	0	NA	NA

Length (mm)	2007		2008		2009		2011	
	Tagged	Recap.	Tagged	Recap.	Tagged	Recap.	Tagged	Recap.
≤ 325	2	0	5	0	5	0	5	0
326-350	2	0	6	0	4	0	6	0
351-375	10	0	2	0	2	0	6	0
376-400	6	0	3	0	4	0	4	0
401-425	2	0	NA	NA	NA	NA	2	0
426-450	1	0	NA	NA	1	0	3	0
451-475	2	0	NA	NA	NA	NA	3	0
476-500	NA	NA	NA	NA	NA	NA	NA	NA
501-525	2	0	1	0	NA	NA	1	0
526-550	NA	NA	NA	NA	NA	NA	NA	NA
551-575	1	0	NA	NA	2	0	NA	NA
576-600	NA	NA	NA	NA	NA	NA	1	0
601-625	NA	NA	NA	NA	NA	NA	1	0
626-650	NA	NA	NA	NA	NA	NA	NA	NA
651-675	NA	NA	NA	NA	NA	NA	NA	NA
> 675	2	0	NA	NA	NA	NA	NA	NA

Length (mm)	Total	
	Tagged	Recap.
≤ 325	22	0
326-350	45	0
351-375	67	0
376-400	55	0
401-425	29	0
426-450	25	1
451-475	21	0
476-500	7	1
501-525	15	0
526-550	9	0
551-575	5	0
576-600	6	0
601-625	3	0
626-650	3	0
651-675	2	0
> 675	9	0

Table 27. Length- and year- specific release and recapture data for female walleye harvested by anglers in Bass-Patterson Lake, Wisconsin. Recaptures are only included if they occurred within 180 days of release. Releases and recaptures are tabulated in 25 millimeter length bins. Bass-Patterson Lake is one of the lakes included in the GLIFWC data series.

Length (mm)	1996		1997		1998		1999	
	Tagged	Recap.	Tagged	Recap.	Tagged	Recap.	Tagged	Recap.
≤ 325	3	0	3	0	1	0	NA	NA
326-350	25	0	13	1	3	0	NA	NA
351-375	34	0	14	0	1	0	2	0
376-400	26	0	15	0	1	0	6	0
401-425	4	0	6	0	2	0	16	0
426-450	2	0	NA	NA	1	0	10	0
451-475	NA	NA	2	0	NA	NA	3	0
476-500	1	0	NA	NA	NA	NA	6	0
501-525	1	0	2	0	NA	NA	1	0
526-550	2	0	NA	NA	NA	NA	NA	NA
551-575	1	0	NA	NA	NA	NA	1	0
576-600	NA	NA	NA	NA	NA	NA	1	0
601-625	2	0	NA	NA	NA	NA	NA	NA
626-650	NA	NA	1	0	NA	NA	NA	NA
651-675	2	0	NA	NA	NA	NA	NA	NA
> 675	NA	NA	1	0	NA	NA	NA	NA

	2000		2001		2002		2003	
Length (mm)	Tagged	Recap.	Tagged	Recap.	Tagged	Recap.	Tagged	Recap.
≤ 325	NA	NA	NA	NA	NA	NA	NA	NA
326-350	NA	NA	NA	NA	NA	NA	NA	NA
351-375	NA	NA	NA	NA	NA	NA	NA	NA
376-400	NA	NA	1	0	NA	NA	1	0
401-425	10	0	NA	NA	2	0	NA	NA
426-450	14	0	2	0	1	0	NA	NA
451-475	18	0	3	0	1	0	4	0
476-500	18	0	2	0	1	0	1	0
501-525	10	0	8	0	NA	NA	1	0
526-550	7	0	7	0	2	0	2	0
551-575	1	0	2	0	NA	NA	NA	NA
576-600	NA	NA	NA	NA	1	0	NA	NA
601-625	NA	NA	1	0	NA	NA	1	0
626-650	NA	NA	NA	NA	NA	NA	NA	NA
651-675	NA	NA	NA	NA	NA	NA	NA	NA
> 675	NA	NA	1	0	NA	NA	3	0

Length (mm)	2004		2005		2006		2007	
	Tagged	Recap.	Tagged	Recap.	Tagged	Recap.	Tagged	Recap.
≤ 325	NA	NA	NA	NA	NA	NA	NA	NA
326-350	NA	NA	NA	NA	NA	NA	NA	NA
351-375	NA	NA	NA	NA	NA	NA	NA	NA
376-400	NA	NA	3	0	1	0	NA	NA
401-425	5	0	5	0	NA	NA	4	0
426-450	3	0	7	0	3	0	6	0
451-475	4	0	4	0	2	0	7	0
476-500	3	0	3	0	NA	NA	4	0
501-525	1	0	NA	NA	3	0	5	0
526-550	5	0	2	0	NA	NA	4	0
551-575	4	0	NA	NA	1	0	4	0
576-600	3	0	2	0	NA	NA	1	0
601-625	NA	NA	NA	NA	2	0	2	0
626-650	1	0	2	0	1	0	3	0
651-675	2	0	NA	NA	NA	NA	NA	NA
> 675	1	0	NA	NA	1	0	NA	NA

	2008		2009		2010		2011	
Length (mm)	Tagged	Recap.	Tagged	Recap.	Tagged	Recap.	Tagged	Recap.
≤ 325	NA	NA	NA	NA	NA	NA	NA	NA
326-350	NA	NA	NA	NA	NA	NA	NA	NA
351-375	NA	NA	NA	NA	1	0	NA	NA
376-400	1	0	NA	NA	4	0	2	0
401-425	4	0	2	0	3	0	7	0
426-450	6	0	6	0	4	0	4	0
451-475	11	0	1	0	2	0	1	0
476-500	7	0	2	0	3	0	NA	NA
501-525	6	0	3	0	3	0	NA	NA
526-550	3	0	8	0	NA	NA	NA	NA
551-575	2	0	1	0	1	0	NA	NA
576-600	4	0	2	0	1	0	NA	NA
601-625	NA	NA	1	0	2	0	2	0
626-650	NA	NA	3	0	1	0	NA	NA
651-675	1	0	1	0	1	0	1	0
> 675	1	0	NA	NA	1	0	1	0

Length (mm)	2012		Total	
	Tagged	Recap.	Tagged	Recap.
≤ 325	NA	NA	7	0
326-350	NA	NA	41	1
351-375	NA	NA	52	0
376-400	NA	NA	61	0
401-425	4	0	74	0
426-450	6	0	75	0
451-475	5	0	68	0
476-500	4	0	55	0
501-525	2	0	46	0
526-550	6	0	48	0
551-575	3	0	21	0
576-600	2	0	17	0
601-625	3	0	16	0
626-650	NA	NA	12	0
651-675	2	0	10	0
> 675	4	0	14	0

Table 28. Length- and year- specific release and recapture data for female walleye harvest by anglers in Kentuck Lake, Wisconsin. Recaptures are only included if they occurred within 180 days of release. Releases and recaptures are tabulated in 25 millimeter length bins. Kentuck Lake is one of the lakes included in the GLIFWC data series.

Length (mm)	1992		1993		1994		1995	
	Tagged	Recap.	Tagged	Recap.	Tagged	Recap.	Tagged	Recap.
≤ 325	NA	NA	1	0	NA	NA	NA	NA
326-350	NA	NA	NA	NA	NA	NA	NA	NA
351-375	NA	NA	NA	NA	NA	NA	NA	NA
376-400	3	0	NA	NA	1	0	NA	NA
401-425	5	0	2	0	NA	NA	NA	NA
426-450	15	0	6	0	3	0	NA	NA
451-475	25	0	9	0	5	0	1	0
476-500	21	0	8	0	9	0	2	0
501-525	15	0	35	0	32	0	1	0
526-550	8	0	23	0	60	0	9	0
551-575	4	0	26	0	109	0	26	0
576-600	2	0	5	0	63	0	37	0
601-625	4	0	3	0	27	0	30	0
626-650	3	0	6	0	11	0	10	0
651-675	NA	NA	8	0	15	0	10	0
> 675	5	0	8	0	32	0	19	0

Length (mm)	1996		1997		1998		1999	
	Tagged	Recap.	Tagged	Recap.	Tagged	Recap.	Tagged	Recap.
≤ 325	NA	NA	NA	NA	NA	NA	NA	NA
326-350	NA	NA	NA	NA	NA	NA	NA	NA
351-375	NA	NA	NA	NA	NA	NA	NA	NA
376-400	NA	NA	NA	NA	NA	NA	NA	NA
401-425	NA	NA	NA	NA	NA	NA	NA	NA
426-450	NA	NA	NA	NA	NA	NA	NA	NA
451-475	1	0	NA	NA	NA	NA	NA	NA
476-500	NA	NA	NA	NA	1	0	1	0
501-525	3	0	NA	NA	5	0	NA	NA
526-550	4	0	NA	NA	2	0	2	0
551-575	20	0	3	0	3	0	6	0
576-600	58	0	5	0	3	0	4	0
601-625	112	0	24	0	30	1	12	0
626-650	114	0	34	0	39	0	22	0
651-675	72	0	40	0	101	0	42	0
> 675	52	0	39	0	144	3	93	2

	2000		2001		2002		2003	
Length (mm)	Tagged	Recap.	Tagged	Recap.	Tagged	Recap.	Tagged	Recap.
≤ 325	NA	NA	NA	NA	NA	NA	NA	NA
326-350	NA	NA	1	0	1	0	NA	NA
351-375	NA	NA	NA	NA	1	0	1	0
376-400	NA	NA	NA	NA	NA	NA	1	0
401-425	NA	NA	NA	NA	NA	NA	NA	NA
426-450	NA	NA	NA	NA	NA	NA	NA	NA
451-475	NA	NA	NA	NA	NA	NA	NA	NA
476-500	NA	NA	NA	NA	NA	NA	NA	NA
501-525	NA	NA	NA	NA	NA	NA	NA	NA
526-550	NA	NA	NA	NA	NA	NA	NA	NA
551-575	NA	NA	NA	NA	NA	NA	NA	NA
576-600	6	0	1	0	1	0	NA	NA
601-625	1	0	2	0	2	0	NA	NA
626-650	12	0	5	0	7	0	NA	NA
651-675	17	0	11	0	14	0	3	0
> 675	44	0	60	0	54	0	5	0

Length (mm)	2004		2005		2006		2007	
	Tagged	Recap.	Tagged	Recap.	Tagged	Recap.	Tagged	Recap.
≤ 325	NA	NA	1	0	3	0	NA	NA
326-350	6	0	2	0	2	0	3	0
351-375	27	0	6	0	15	0	11	0
376-400	106	0	29	0	24	0	24	0
401-425	105	0	89	0	82	0	23	0
426-450	80	0	71	0	117	1	27	0
451-475	91	0	44	0	63	0	33	0
476-500	63	0	32	0	37	0	34	0
501-525	25	0	10	2	15	0	12	0
526-550	3	0	5	0	6	0	12	0
551-575	4	0	NA	NA	1	0	11	0
576-600	NA	NA	NA	NA	2	0	5	0
601-625	3	0	2	0	3	0	6	0
626-650	3	0	1	0	3	0	8	0
651-675	9	0	2	0	NA	NA	4	0
> 675	28	1	21	0	5	0	2	0

Length (mm)	2008		2009		2010		2011	
	Tagged	Recap.	Tagged	Recap.	Tagged	Recap.	Tagged	Recap.
≤ 325	1	0	4	0	NA	NA	8	0
326-350	11	0	4	0	2	0	1	0
351-375	35	0	5	1	2	0	2	0
376-400	71	0	10	1	1	0	4	0
401-425	106	0	13	0	2	0	6	0
426-450	49	0	18	1	9	0	9	0
451-475	40	0	17	0	11	0	18	0
476-500	16	0	13	0	12	0	12	0
501-525	25	1	15	0	21	0	7	0
526-550	33	0	14	0	37	1	7	0
551-575	20	1	24	1	46	0	19	0
576-600	13	0	17	0	26	0	15	0
601-625	9	0	10	0	19	0	8	0
626-650	11	0	8	0	5	0	5	0
651-675	9	0	8	0	5	0	3	0
> 675	6	0	10	0	4	0	4	0

Length (mm)	2012		Total	
	Tagged	Recap.	Tagged	Recap.
≤ 325	NA	NA	18	0
326-350	3	0	36	0
351-375	2	0	107	1
376-400	NA	NA	274	1
401-425	NA	NA	433	0
426-450	1	0	405	2
451-475	4	0	362	0
476-500	9	0	270	0
501-525	19	0	240	3
526-550	31	0	256	1
551-575	25	0	347	2
576-600	33	0	296	0
601-625	31	0	338	1
626-650	12	0	319	0
651-675	15	0	388	0
> 675	4	0	639	6

Table 29. Length- and year- specific release and recapture data for female walleye harvest by anglers in Bearskin Lake, Wisconsin. Recaptures are only included if they occurred within 180 days of release. Releases and recaptures are tabulated in 25 millimeter length bins. Bearskin Lake is one of the lakes included in the GLIFWC data series.

Length (mm)	1998		2000		2002		2003	
	Tagged	Recap.	Tagged	Recap.	Tagged	Recap.	Tagged	Recap.
≤ 325	2	0	NA	NA	NA	NA	2	0
326-350	NA	NA	NA	NA	2	0	1	0
351-375	1	0	2	0	8	0	8	0
376-400	1	0	2	0	11	1	14	0
401-425	1	0	9	0	15	0	10	0
426-450	NA	NA	6	0	10	0	19	0
451-475	NA	NA	9	0	5	0	20	0
476-500	NA	NA	1	0	7	0	27	0
501-525	NA	NA	6	0	15	0	13	0
526-550	NA	NA	1	0	8	0	16	0
551-575	NA	NA	3	0	5	0	23	0
576-600	NA	NA	NA	NA	2	0	15	0
601-625	NA	NA	NA	NA	1	0	7	0
626-650	NA	NA	NA	NA	NA	NA	5	0
651-675	NA	NA	NA	NA	1	0	2	0
> 675	NA	NA	NA	NA	NA	NA	1	0

Length (mm)	2004		2006		2008		2010	
	Tagged	Recap.	Tagged	Recap.	Tagged	Recap.	Tagged	Recap.
≤ 325	1	0	NA	NA	2	0	1	0
326-350	2	0	9	0	9	0	1	0
351-375	5	0	15	0	27	0	1	0
376-400	8	0	20	0	24	0	8	0
401-425	11	0	18	0	44	1	9	0
426-450	6	0	4	0	31	2	2	0
451-475	5	0	4	0	29	1	1	0
476-500	6	0	2	0	21	0	NA	NA
501-525	6	0	1	0	15	0	2	0
526-550	7	0	2	0	6	0	1	0
551-575	7	0	6	0	3	0	NA	NA
576-600	9	0	2	0	1	0	1	0
601-625	1	0	3	0	1	0	NA	NA
626-650	NA	NA	2	0	5	0	1	0
651-675	1	0	NA	NA	3	0	2	0
> 675	1	0	1	0	NA	NA	NA	NA

Length (mm)	2012		Total	
	Tagged	Recap.	Tagged	Recap.
≤ 325	NA	NA	8	0
326-350	3	0	27	0
351-375	3	0	70	0
376-400	4	0	92	1
401-425	7	0	124	1
426-450	4	0	82	2
451-475	4	0	77	1
476-500	4	0	68	0
501-525	NA	NA	58	0
526-550	4	0	45	0
551-575	1	0	48	0
576-600	2	0	32	0
601-625	NA	NA	13	0
626-650	1	0	14	0
651-675	1	0	10	0
> 675	1	0	4	0

Table 30. Length- and year- specific release and recapture data for female walleye harvest by anglers in Sherman Lake, Wisconsin. Recaptures are only included if they occurred within 180 days of release. Releases and recaptures are tabulated in 25 millimeter length bins. Sherman Lake is one of the lakes included in the GLIFWC data series.

Length (mm)	1995		1996		1997		1998	
	Tagged	Recap.	Tagged	Recap.	Tagged	Recap.	Tagged	Recap.
≤ 325	NA	NA	NA	NA	NA	NA	NA	NA
326-350	3	0	NA	NA	NA	NA	NA	NA
351-375	11	0	6	0	1	0	NA	NA
376-400	8	0	11	0	5	0	3	0
401-425	4	0	5	0	6	0	9	0
426-450	5	0	4	0	7	0	3	0
451-475	9	0	NA	NA	1	0	4	0
476-500	10	0	NA	NA	3	0	2	0
501-525	6	0	3	0	NA	NA	3	0
526-550	NA	NA	1	0	1	0	1	0
551-575	5	0	NA	NA	1	0	NA	NA
576-600	NA	NA	1	0	NA	NA	1	0
601-625	1	0	NA	NA	1	0	1	0
626-650	1	0	NA	NA	NA	NA	NA	NA
651-675	NA	NA	NA	NA	NA	NA	NA	NA
> 675	NA	NA	NA	NA	NA	NA	1	0

Length (mm)	1999		2000		2001		2002	
	Tagged	Recap.	Tagged	Recap.	Tagged	Recap.	Tagged	Recap.
≤ 325	NA	NA	NA	NA	NA	NA	NA	NA
326-350	NA	NA	NA	NA	NA	NA	NA	NA
351-375	NA	NA	NA	NA	NA	NA	NA	NA
376-400	NA	NA	NA	NA	2	0	NA	NA
401-425	1	0	1	0	3	0	1	0
426-450	NA	NA	2	0	2	0	NA	NA
451-475	NA	NA	4	0	2	0	NA	NA
476-500	NA	NA	NA	NA	2	0	2	0
501-525	NA	NA	1	0	2	0	5	0
526-550	NA	NA	2	0	1	0	2	0
551-575	NA	NA	2	0	3	0	NA	NA
576-600	NA	NA	1	0	1	0	NA	NA
601-625	1	0	1	0	2	0	NA	NA
626-650	1	0	NA	NA	NA	NA	1	0
651-675	NA	NA	NA	NA	1	0	NA	NA
> 675	NA	NA	NA	NA	1	0	NA	NA

Length (mm)	2003		2004		2005		2006	
	Tagged	Recap.	Tagged	Recap.	Tagged	Recap.	Tagged	Recap.
≤ 325	NA	NA	NA	NA	NA	NA	NA	NA
326-350	NA	NA	NA	NA	NA	NA	NA	NA
351-375	NA	NA	NA	NA	NA	NA	1	0
376-400	3	0	NA	NA	NA	NA	NA	NA
401-425	2	0	NA	NA	2	0	1	0
426-450	3	0	NA	NA	NA	NA	3	0
451-475	3	0	1	0	2	0	NA	NA
476-500	2	0	NA	NA	7	0	3	0
501-525	3	0	NA	NA	1	0	4	0
526-550	7	0	NA	NA	1	0	3	0
551-575	4	0	NA	NA	3	0	3	0
576-600	2	0	NA	NA	1	0	1	0
601-625	NA	NA	1	0	NA	NA	1	0
626-650	NA	NA	NA	NA	1	0	1	0
651-675	NA	NA	NA	NA	1	0	NA	NA
> 675	NA	NA	NA	NA	NA	NA	NA	NA

	2007		2008		2009		2010	
Length (mm)	Tagged	Recap.	Tagged	Recap.	Tagged	Recap.	Tagged	Recap.
≤ 325	NA	NA	10	0	2	0	1	0
326-350	NA	NA	7	0	4	0	NA	NA
351-375	NA	NA	5	0	4	0	2	0
376-400	1	0	2	0	5	0	2	0
401-425	2	0	NA	NA	7	0	1	0
426-450	3	0	NA	NA	1	0	2	0
451-475	2	0	NA	NA	1	0	2	0
476-500	2	0	3	0	2	0	2	0
501-525	3	0	2	0	NA	NA	NA	NA
526-550	2	0	6	0	2	0	3	0
551-575	3	0	3	0	NA	NA	NA	NA
576-600	2	0	1	0	1	0	NA	NA
601-625	3	0	2	0	1	0	1	0
626-650	NA	NA	NA	NA	NA	NA	NA	NA
651-675	NA	NA	1	0	1	0	NA	NA
> 675	1	0	NA	NA	NA	NA	NA	NA

Length (mm)	2011		2012		Total	
	Tagged	Recap.	Tagged	Recap.	Tagged	Recap.
≤ 325	5	0	NA	NA	18	0
326-350	8	0	1	0	23	0
351-375	8	0	1	0	39	0
376-400	3	0	NA	NA	45	0
401-425	3	0	1	0	49	0
426-450	2	0	1	0	38	0
451-475	3	0	NA	NA	34	0
476-500	1	0	NA	NA	41	0
501-525	NA	NA	NA	NA	33	0
526-550	2	0	NA	NA	34	0
551-575	NA	NA	NA	NA	27	0
576-600	1	0	NA	NA	13	0
601-625	NA	NA	1	0	17	0
626-650	1	0	1	0	7	0
651-675	1	0	NA	NA	5	0
> 675	NA	NA	NA	NA	3	0

Table 31. Length- and year- specific release and recapture data for male and female walleye harvest by spear fishing in Butternut Lake, Wisconsin. Recaptures are only included if they occurred within 180 days of release. Releases and recaptures are tabulated in 50 millimeter length bins. Butternut Lake is one of the lakes included in the GLIFWC data series.

Males								
	1993		1994		1995		1996	
Length (mm)	Tagged	Recap.	Tagged	Recap.	Tagged	Recap.	Tagged	Recap.
≤ 250	NA	NA	NA	NA	NA	NA	NA	NA
251-300	370	0	27	0	2	0	2	0
301-350	1667	0	833	0	76	0	38	0
351-400	651	0	745	0	1054	0	166	0
401-450	46	0	42	0	274	0	485	1
451-500	30	0	9	0	14	0	29	0
> 500	3	0	1	0	3	0	1	0
Females								
Length (mm)	Tagged	Recap.	Tagged	Recap.	Tagged	Recap.	Tagged	Recap.
≤ 250	NA	NA	NA	NA	NA	NA	NA	NA
251-300	2	0	NA	NA	1	0	NA	NA
301-350	22	0	NA	NA	NA	NA	NA	NA
351-400	71	0	19	0	27	0	NA	NA
401-450	10	0	4	0	103	0	11	0
451-500	1	0	NA	NA	17	0	22	0
> 500	8	0	1	0	1	0	9	0

Males								
	1997		1998		1999		2000	
Length (mm)	Tagged	Recap.	Tagged	Recap.	Tagged	Recap.	Tagged	Recap.
≤ 250	NA	NA	NA	NA	NA	NA	NA	NA
251-300	147	0	700	47	213	0	68	1
301-350	64	0	579	53	991	6	450	26
351-400	94	0	120	19	392	2	694	84
401-450	271	0	354	34	279	3	294	28
451-500	62	0	113	13	131	1	167	15
> 500	1	0	6	1	11	0	16	2
Females								
Length (mm)	Tagged	Recap.	Tagged	Recap.	Tagged	Recap.	Tagged	Recap.
≤ 250	NA	NA	NA	NA	NA	NA	NA	NA
251-300	NA	NA	NA	NA	NA	NA	NA	NA
301-350	NA	NA	NA	NA	2	0	NA	NA
351-400	NA	NA	NA	NA	7	0	6	0
401-450	5	0	3	0	14	0	30	1
451-500	106	0	4	0	13	0	15	0
> 500	295	0	54	0	90	0	56	3

Males								
	2001		2002		2003		2004	
Length (mm)	Tagged	Recap.	Tagged	Recap.	Tagged	Recap.	Tagged	Recap.
≤ 250	NA	NA	NA	NA	NA	NA	NA	NA
251-300	119	0	105	4	9	0	7	2
301-350	192	3	248	19	97	0	23	0
351-400	251	9	291	36	224	0	41	4
401-450	219	4	218	15	220	0	153	13
451-500	113	3	127	2	123	0	103	7
> 500	9	1	7	0	16	0	11	0
Females								
Length (mm)	Tagged	Recap.	Tagged	Recap.	Tagged	Recap.	Tagged	Recap.
≤ 250	NA	NA	NA	NA	NA	NA	NA	NA
251-300	NA	NA	NA	NA	NA	NA	NA	NA
301-350	NA	NA	NA	NA	NA	NA	NA	NA
351-400	2	0	NA	NA	NA	NA	1	0
401-450	63	1	20	0	17	0	10	0
451-500	71	3	56	1	31	0	69	0
> 500	68	1	43	0	52	0	209	0

Males								
	2005		2006		2007		2008	
Length (mm)	Tagged	Recap.	Tagged	Recap.	Tagged	Recap.	Tagged	Recap.
≤ 250	NA	NA	NA	NA	NA	NA	2	0
251-300	3	0	13	2	4	0	34	0
301-350	26	2	187	28	21	0	68	0
351-400	35	3	42	7	19	2	170	10
401-450	82	6	49	12	12	0	66	5
451-500	80	6	105	13	16	1	44	0
> 500	14	0	31	1	5	0	24	0
Females								
Length (mm)	Tagged	Recap.	Tagged	Recap.	Tagged	Recap.	Tagged	Recap.
≤ 250	NA	NA	NA	NA	NA	NA	NA	NA
251-300	NA	NA	NA	NA	NA	NA	NA	NA
301-350	NA	NA	NA	NA	NA	NA	NA	NA
351-400	NA	NA	NA	NA	NA	NA	NA	NA
401-450	NA	NA	1	0	NA	NA	1	0
451-500	9	0	11	0	1	0	1	0
> 500	42	1	76	1	6	0	41	1

Males								
	2009		2010		2011		2012	
Length (mm)	Tagged	Recap.	Tagged	Recap.	Tagged	Recap.	Tagged	Recap.
≤ 250	NA	NA	NA	NA	NA	NA	NA	NA
251-300	1024	9	90	3	6	0	3	0
301-350	807	9	1303	73	230	14	24	0
351-400	81	1	376	35	1675	131	575	0
401-450	51	0	59	10	272	24	475	0
451-500	9	1	15	0	28	2	20	0
> 500	3	0	8	1	2	0	2	0
Females								
Length (mm)	Tagged	Recap.	Tagged	Recap.	Tagged	Recap.	Tagged	Recap.
≤ 250	NA	NA	NA	NA	NA	NA	NA	NA
251-300	NA	NA	NA	NA	NA	NA	NA	NA
301-350	NA	NA	NA	NA	NA	NA	NA	NA
351-400	NA	NA	1	0	28	0	1	0
401-450	1	0	3	0	46	1	23	0
451-500	NA	NA	NA	NA	6	0	12	0
> 500	8	0	7	0	3	0	2	0

Males		
	Total	
Length (mm)	Tagged	Recap.
≤ 250	2	0
251-300	2946	68
301-350	7924	233
351-400	7696	343
401-450	3921	155
451-500	1338	64
> 500	174	6
Females		
Length (mm)	Tagged	Recap.
≤ 250	NA	NA
251-300	3	0
301-350	24	0
351-400	163	0
401-450	365	3
451-500	445	4
> 500	1071	7

Table 32. Length- and year- specific release and recapture data for male and female walleye harvested by spear fishing in Kentuck Lake, Wisconsin. Recaptures are only included if they occurred within 180 days of release. Releases and recaptures are tabulated in 50 millimeter length bins. Kentuck Lake is one of the lakes included in the GLIFWC data series.

Males								
	1992		1993		1994		1995	
Length (mm)	Tagged	Recap.	Tagged	Recap.	Tagged	Recap.	Tagged	Recap.
≤ 250	NA	NA	NA	NA	NA	NA	NA	NA
251-300	2	0	1	0	NA	NA	1	0
301-350	60	0	9	0	7	0	NA	NA
351-400	567	0	221	0	97	0	16	0
401-450	639	0	525	0	351	0	81	0
451-500	112	0	290	0	293	0	108	0
> 500	20	0	44	0	88	0	27	0
Females								
Length (mm)	Tagged	Recap.	Tagged	Recap.	Tagged	Recap.	Tagged	Recap.
≤ 250	NA	NA	NA	NA	NA	NA	NA	NA
251-300	NA	NA	NA	NA	NA	NA	NA	NA
301-350	NA	NA	1	0	NA	NA	NA	NA
351-400	3	0	NA	NA	1	0	NA	NA
401-450	20	0	8	0	3	0	NA	NA
451-500	46	0	17	0	14	0	3	0
> 500	41	0	114	0	349	0	142	0

Males								
	1996		1997		1998		1999	
Length (mm)	Tagged	Recap.	Tagged	Recap.	Tagged	Recap.	Tagged	Recap.
≤ 250	NA	NA	NA	NA	NA	NA	NA	NA
251-300	NA	NA	NA	NA	NA	NA	9	0
301-350	2	0	NA	NA	NA	NA	43	0
351-400	4	0	NA	NA	NA	NA	8	0
401-450	1	0	2	0	NA	NA	7	0
451-500	1	0	NA	NA	2	0	1	0
> 500	2	0	1	0	1	0	5	0
Females								
Length (mm)	Tagged	Recap.	Tagged	Recap.	Tagged	Recap.	Tagged	Recap.
≤ 250	NA	NA	NA	NA	NA	NA	NA	NA
251-300	NA	NA	NA	NA	NA	NA	NA	NA
301-350	NA	NA	NA	NA	NA	NA	NA	NA
351-400	NA	NA	NA	NA	NA	NA	NA	NA
401-450	NA	NA	NA	NA	NA	NA	NA	NA
451-500	1	0	NA	NA	1	0	1	0
> 500	435	0	145	2	327	0	181	0

Males								
	2000		2001		2002		2003	
Length (mm)	Tagged	Recap.	Tagged	Recap.	Tagged	Recap.	Tagged	Recap.
≤ 250	NA	NA	NA	NA	NA	NA	1	0
251-300	2	0	149	0	93	0	211	0
301-350	29	0	399	0	1144	0	1501	0
351-400	43	0	12	0	13	0	1271	0
401-450	38	0	19	0	12	0	19	0
451-500	15	0	14	0	25	0	6	0
> 500	4	0	2	0	17	0	4	0
Females								
Length (mm)	Tagged	Recap.	Tagged	Recap.	Tagged	Recap.	Tagged	Recap.
≤ 250	NA	NA	NA	NA	NA	NA	NA	NA
251-300	NA	NA	NA	NA	NA	NA	NA	NA
301-350	NA	NA	1	0	1	0	NA	NA
351-400	NA	NA	NA	NA	1	0	2	0
401-450	NA	NA	NA	NA	NA	NA	NA	NA
451-500	NA	NA	NA	NA	NA	NA	NA	NA
> 500	80	0	79	0	78	0	8	0

Males								
	2004		2005		2006		2007	
Length (mm)	Tagged	Recap.	Tagged	Recap.	Tagged	Recap.	Tagged	Recap.
≤ 250	NA	NA	17	0	4	0	3	0
251-300	161	1	78	0	1179	8	254	4
301-350	501	5	673	25	1668	38	1467	61
351-400	2579	77	2494	182	918	61	470	37
401-450	493	23	778	68	373	34	252	29
451-500	35	2	14	0	14	0	14	2
> 500	30	0	14	0	6	2	NA	NA
Females								
Length (mm)	Tagged	Recap.	Tagged	Recap.	Tagged	Recap.	Tagged	Recap.
≤ 250	NA	NA	NA	NA	NA	NA	NA	NA
251-300	NA	NA	1	0	NA	NA	NA	NA
301-350	6	0	2	0	5	0	3	0
351-400	133	0	35	0	39	0	35	0
401-450	185	0	160	0	199	0	50	0
451-500	154	0	76	0	100	0	67	0
> 500	75	0	41	1	35	0	60	0

Males								
	2008		2009		2010		2011	
Length (mm)	Tagged	Recap.	Tagged	Recap.	Tagged	Recap.	Tagged	Recap.
≤ 250	75	0	32	0	16	2	NA	NA
251-300	2182	28	2002	48	608	118	391	22
301-350	1346	59	1171	78	434	145	164	19
351-400	423	36	212	38	125	81	54	5
401-450	93	8	47	8	34	22	19	2
451-500	9	1	17	3	16	12	4	1
> 500	2	0	1	1	NA	NA	NA	NA
Females								
Length (mm)	Tagged	Recap.	Tagged	Recap.	Tagged	Recap.	Tagged	Recap.
≤ 250	NA	NA	NA	NA	NA	NA	NA	NA
251-300	NA	NA	1	0	NA	NA	3	0
301-350	12	0	7	0	2	0	6	0
351-400	106	0	15	0	3	0	6	0
401-450	155	0	31	3	11	2	15	0
451-500	56	0	30	0	23	1	30	0
> 500	126	0	106	9	163	5	68	2

Males				
	2012		Total	
Length (mm)	Tagged	Recap.	Tagged	Recap.
≤ 250	NA	NA	148	2
251-300	14	0	7337	229
301-350	337	0	10955	430
351-400	191	0	9718	517
401-450	47	0	3830	194
451-500	9	0	999	21
> 500	1	0	269	3
Females				
Length (mm)	Tagged	Recap.	Tagged	Recap.
≤ 250	NA	NA	NA	NA
251-300	NA	NA	5	0
301-350	3	0	49	0
351-400	2	0	381	0
401-450	1	0	838	5
451-500	13	0	632	1
> 500	170	0	2823	19

Table 33. Length- and year- specific release and recapture data for male and female walleye harvest by spear fishing in Squaw Lake, Wisconsin. Recaptures are only included if they occurred within 180 days of release. Releases and recaptures are tabulated in 50 millimeter length bins. Squaw Lake is one of the lakes included in the GLIFWC data series.

Males								
	1992		1993		1994		1995	
Length (mm)	Tagged	Recap.	Tagged	Recap.	Tagged	Recap.	Tagged	Recap.
≤ 250	NA	NA	2	0	20	0	NA	NA
251-300	21	0	455	0	653	0	543	0
301-350	606	0	475	0	461	0	514	0
351-400	140	0	94	0	87	0	72	0
401-450	15	0	6	0	1	0	2	0
451-500	NA	NA	1	0	2	0	1	0
> 500	NA	NA	NA	NA	NA	NA	NA	NA
Females								
Length (mm)	Tagged	Recap.	Tagged	Recap.	Tagged	Recap.	Tagged	Recap.
≤ 250	NA	NA	NA	NA	NA	NA	NA	NA
251-300	NA	NA	1	0	3	0	1	0
301-350	48	0	41	0	27	0	29	0
351-400	53	0	48	0	43	0	30	0
401-450	11	0	14	0	14	0	4	0
451-500	1	0	3	0	1	0	NA	NA
> 500	2	0	1	0	3	0	3	0

Males								
	1996		1997		1998		1999	
Length (mm)	Tagged	Recap.	Tagged	Recap.	Tagged	Recap.	Tagged	Recap.
≤ 250	NA	NA	1	0	NA	NA	NA	NA
251-300	239	0	143	0	649	6	464	0
301-350	359	0	149	0	355	5	651	6
351-400	64	0	38	0	89	2	95	3
401-450	10	0	7	0	7	0	4	1
451-500	NA	NA	1	0	1	0	NA	NA
> 500	2	0	NA	NA	NA	NA	NA	NA
Females								
Length (mm)	Tagged	Recap.	Tagged	Recap.	Tagged	Recap.	Tagged	Recap.
≤ 250	NA	NA	NA	NA	NA	NA	NA	NA
251-300	NA	NA	NA	NA	4	0	1	0
301-350	17	0	19	0	18	0	48	0
351-400	33	0	29	0	43	0	70	0
401-450	6	0	7	0	17	0	37	0
451-500	NA	NA	2	0	4	0	5	1
> 500	1	0	1	0	5	0	3	0

Males								
	2000		2001		2002		2003	
Length (mm)	Tagged	Recap.	Tagged	Recap.	Tagged	Recap.	Tagged	Recap.
≤ 250	NA	NA	4	0	NA	NA	NA	NA
251-300	442	8	590	19	494	15	40	0
301-350	659	21	500	38	449	22	57	0
351-400	145	5	123	11	75	6	21	0
401-450	16	1	6	2	11	1	2	0
451-500	NA	NA	1	1	2	1	1	0
> 500	NA	NA	NA	NA	1	1	1	0
Females								
Length (mm)	Tagged	Recap.	Tagged	Recap.	Tagged	Recap.	Tagged	Recap.
≤ 250	NA	NA	NA	NA	NA	NA	NA	NA
251-300	1	0	NA	NA	NA	NA	1	0
301-350	12	1	30	1	30	0	25	0
351-400	21	1	35	0	57	0	32	0
401-450	6	0	10	0	24	0	15	0
451-500	1	0	3	0	6	0	7	0
> 500	3	1	1	0	9	1	2	0

Males								
	2004		2005		2006		2007	
Length (mm)	Tagged	Recap.	Tagged	Recap.	Tagged	Recap.	Tagged	Recap.
≤ 250	27	0	10	0	NA	NA	NA	NA
251-300	503	0	723	0	703	13	428	1
301-350	262	1	179	0	401	10	778	9
351-400	64	0	39	0	31	4	70	1
401-450	3	0	7	0	3	0	2	1
451-500	NA	NA	3	0	NA	NA	1	0
> 500	NA	NA	3	0	NA	NA	NA	NA
Females								
Length (mm)	Tagged	Recap.	Tagged	Recap.	Tagged	Recap.	Tagged	Recap.
≤ 250	NA	NA	NA	NA	NA	NA	NA	NA
251-300	1	0	4	0	1	1	NA	NA
301-350	29	0	14	0	25	0	39	0
351-400	38	0	26	0	32	0	37	0
401-450	13	0	12	0	13	0	7	0
451-500	5	0	10	0	3	0	1	0
> 500	2	0	3	0	3	0	4	0

Males								
	2008		2009		2010		2011	
Length (mm)	Tagged	Recap.	Tagged	Recap.	Tagged	Recap.	Tagged	Recap.
≤ 250	NA	NA	NA	NA	NA	NA	NA	NA
251-300	356	0	291	5	257	9	118	7
301-350	535	0	532	21	327	17	520	22
351-400	88	0	120	11	95	9	160	5
401-450	4	0	2	0	NA	NA	24	0
451-500	NA	NA	1	0	NA	NA	1	0
> 500	NA	NA	NA	NA	NA	NA	1	0
Females								
Length (mm)	Tagged	Recap.	Tagged	Recap.	Tagged	Recap.	Tagged	Recap.
≤ 250	NA	NA	NA	NA	NA	NA	NA	NA
251-300	NA	NA	3	0	2	0	NA	NA
301-350	53	0	33	0	23	1	12	0
351-400	144	0	87	0	66	1	52	1
401-450	16	0	23	1	18	0	27	1
451-500	4	0	3	0	1	0	6	0
> 500	1	0	3	0	NA	NA	5	0

Males				
	2012		Total	
Length (mm)	Tagged	Recap.	Tagged	Recap.
≤ 250	3	0	67	0
251-300	217	0	8329	83
301-350	316	0	9085	172
351-400	86	0	1796	57
401-450	5	0	137	6
451-500	NA	NA	16	2
> 500	NA	NA	8	1
Females				
Length (mm)	Tagged	Recap.	Tagged	Recap.
≤ 250	1	0	1	0
251-300	1	0	24	1
301-350	15	0	587	3
351-400	54	0	1030	3
401-450	18	0	312	2
451-500	NA	NA	66	1
> 500	NA	NA	55	2

Table 34. Length- and year- specific release and recapture data for male and female walleye harvest by spear fishing in Bearskin Lake, Wisconsin. Recaptures are only included if they occurred within 180 days of release. Releases and recaptures are tabulated in 50 millimeter length bins. Bearskin Lake is one of the lakes included in the GLIFWC data series.

Males								
	1998		2000		2002		2003	
Length (mm)	Tagged	Recap.	Tagged	Recap.	Tagged	Recap.	Tagged	Recap.
≤ 250	1	0	NA	NA	NA	NA	NA	NA
251-300	938	3	1	0	234	1	238	2
301-350	234	12	39	2	517	10	345	2
351-400	14	4	76	3	303	12	230	10
401-450	4	0	30	1	92	7	109	6
451-500	NA	NA	2	0	16	3	21	1
> 500	NA	NA	NA	NA	2	0	4	1
Females								
Length (mm)	Tagged	Recap.	Tagged	Recap.	Tagged	Recap.	Tagged	Recap.
≤ 250	NA	NA	NA	NA	NA	NA	NA	NA
251-300	2	0	NA	NA	NA	NA	NA	NA
301-350	NA	NA	NA	NA	2	0	3	0
351-400	2	0	4	0	19	0	22	1
401-450	1	0	15	0	25	0	29	1
451-500	NA	NA	10	0	12	0	47	0
> 500	NA	NA	10	0	32	1	82	3

Males								
	2004		2006		2009		2010	
Length (mm)	Tagged	Recap.	Tagged	Recap.	Tagged	Recap.	Tagged	Recap.
≤ 250	164	0	NA	NA	NA	NA	2	0
251-300	1134	0	237	0	396	4	399	6
301-350	204	0	794	0	557	24	935	34
351-400	77	0	302	0	331	19	236	18
401-450	35	0	14	0	69	6	46	5
451-500	8	0	6	0	6	0	2	0
> 500	1	0	2	0	NA	NA	NA	NA
Females								
Length (mm)	Tagged	Recap.	Tagged	Recap.	Tagged	Recap.	Tagged	Recap.
≤ 250	NA	NA	NA	NA	NA	NA	NA	NA
251-300	NA	NA	NA	NA	NA	NA	NA	NA
301-350	3	0	9	0	11	0	2	0
351-400	13	0	35	0	51	1	9	0
401-450	17	0	22	0	75	0	11	0
451-500	11	0	6	0	50	1	1	0
> 500	32	0	17	0	34	0	7	0

Males				
	2012		Total	
Length (mm)	Tagged	Recap.	Tagged	Recap.
≤ 250	NA	NA	167	0
251-300	165	0	3742	16
301-350	796	0	4421	84
351-400	488	0	2057	66
401-450	50	0	449	25
451-500	3	0	64	4
> 500	NA	NA	9	1
Females				
Length (mm)	Tagged	Recap.	Tagged	Recap.
≤ 250	NA	NA	NA	NA
251-300	NA	NA	2	0
301-350	3	0	33	0
351-400	7	0	162	2
401-450	11	0	206	1
451-500	8	0	145	1
> 500	10	0	224	4

Table 35. Length- and year- specific release and recapture data for male and female walleye harvest by spear fishing in Bass-Patterson Lake, Wisconsin. Recaptures are only included if they occurred within 180 days of release. Releases and recaptures are tabulated in 50 millimeter length bins. Bass-Patterson Lake is one of the lakes included in the GLIFWC data series.

Males								
	1996		1997		1998		1999	
Length (mm)	Tagged	Recap.	Tagged	Recap.	Tagged	Recap.	Tagged	Recap.
≤ 250	NA	NA	NA	NA	NA	NA	NA	NA
251-300	122	0	351	0	57	0	13	1
301-350	742	0	524	0	199	13	137	4
351-400	215	0	137	0	62	9	296	16
401-450	13	0	7	0	3	0	48	3
451-500	NA	NA	NA	NA	NA	NA	2	0
> 500	1	0	NA	NA	NA	NA	NA	NA
Females								
Length (mm)	Tagged	Recap.	Tagged	Recap.	Tagged	Recap.	Tagged	Recap.
≤ 250	NA	NA	NA	NA	NA	NA	NA	NA
251-300	NA	NA	1	0	NA	NA	NA	NA
301-350	28	0	15	0	4	0	NA	NA
351-400	60	0	29	0	2	0	8	0
401-450	6	0	6	0	3	0	26	0
451-500	1	0	2	0	NA	NA	9	0
> 500	8	0	4	0	NA	NA	3	0

Males								
	2000		2001		2002		2003	
Length (mm)	Tagged	Recap.	Tagged	Recap.	Tagged	Recap.	Tagged	Recap.
≤ 250	NA	NA	NA	NA	NA	NA	NA	NA
251-300	28	0	11	0	53	6	43	0
301-350	118	0	205	5	150	5	165	5
351-400	165	0	208	15	136	12	92	8
401-450	110	0	101	11	71	9	49	3
451-500	8	0	16	3	11	3	13	0
> 500	NA	NA	NA	NA	NA	NA	1	0
Females								
Length (mm)	Tagged	Recap.	Tagged	Recap.	Tagged	Recap.	Tagged	Recap.
≤ 250	NA	NA	NA	NA	NA	NA	NA	NA
251-300	NA	NA	NA	NA	NA	NA	NA	NA
301-350	NA	NA	NA	NA	NA	NA	NA	NA
351-400	NA	NA	1	0	NA	NA	1	0
401-450	24	0	2	0	3	0	NA	NA
451-500	36	0	5	0	2	0	5	1
> 500	18	0	19	0	3	0	7	0

Males								
	2004		2005		2006		2007	
Length (mm)	Tagged	Recap.	Tagged	Recap.	Tagged	Recap.	Tagged	Recap.
≤ 250	NA	NA	NA	NA	NA	NA	NA	NA
251-300	17	0	2	0	7	0	19	0
301-350	246	3	128	1	45	3	153	2
351-400	157	4	242	6	114	7	132	3
401-450	51	3	69	0	51	4	98	10
451-500	15	2	15	2	14	2	18	5
> 500	3	0	6	0	1	0	5	0
Females								
Length (mm)	Tagged	Recap.	Tagged	Recap.	Tagged	Recap.	Tagged	Recap.
≤ 250	NA	NA	NA	NA	NA	NA	NA	NA
251-300	NA	NA	NA	NA	NA	NA	NA	NA
301-350	NA	NA	NA	NA	NA	NA	NA	NA
351-400	NA	NA	3	0	1	0	NA	NA
401-450	8	0	12	0	3	0	10	0
451-500	7	0	7	0	2	0	11	0
> 500	17	1	6	1	8	0	19	2

Males								
	2008		2009		2010		2011	
Length (mm)	Tagged	Recap.	Tagged	Recap.	Tagged	Recap.	Tagged	Recap.
≤ 250	NA	NA	NA	NA	NA	NA	NA	NA
251-300	20	0	9	0	15	1	35	0
301-350	76	0	235	3	84	2	157	3
351-400	161	0	95	6	157	3	159	9
401-450	104	0	81	12	41	1	57	3
451-500	25	0	24	3	11	0	5	0
> 500	4	0	2	0	1	0	2	0
Females								
Length (mm)	Tagged	Recap.	Tagged	Recap.	Tagged	Recap.	Tagged	Recap.
≤ 250	NA	NA	NA	NA	NA	NA	NA	NA
251-300	NA	NA	NA	NA	NA	NA	NA	NA
301-350	NA	NA	NA	NA	NA	NA	NA	NA
351-400	1	0	NA	NA	5	0	2	0
401-450	10	0	8	1	7	0	11	0
451-500	18	0	3	0	5	0	1	0
> 500	17	0	19	0	10	0	4	1

Males				
	2012		Total	
Length (mm)	Tagged	Recap.	Tagged	Recap.
≤ 250	NA	NA	NA	NA
251-300	5	0	807	8
301-350	99	0	3463	49
351-400	119	0	2647	98
401-450	53	0	1007	59
451-500	4	0	181	20
> 500	NA	NA	26	0
Females				
Length (mm)	Tagged	Recap.	Tagged	Recap.
≤ 250	NA	NA	NA	NA
251-300	NA	NA	1	0
301-350	NA	NA	47	0
351-400	NA	NA	113	0
401-450	10	0	149	1
451-500	9	0	123	1
> 500	22	0	184	5

Table 36. Length- and year- specific release and recapture data for male and female walleye harvest by spear fishing in Squirrel Lake, Wisconsin. Recaptures are only included if they occurred within 180 days of release. Releases and recaptures are tabulated in 50 millimeter length bins. Squirrel Lake is one of the lakes included in the GLIFWC data series.

Males								
	1992		1993		1994		1995	
Length (mm)	Tagged	Recap.	Tagged	Recap.	Tagged	Recap.	Tagged	Recap.
≤ 250	NA	NA	1	0	10	0	NA	NA
251-300	7	0	513	0	1671	0	1225	0
301-350	1162	0	1005	0	525	0	685	0
351-400	259	0	442	0	354	0	84	0
401-450	57	0	63	0	57	0	21	0
451-500	6	0	13	0	4	0	4	0
> 500	1	0	3	0	2	0	1	0
Females								
Length (mm)	Tagged	Recap.	Tagged	Recap.	Tagged	Recap.	Tagged	Recap.
≤ 250	NA	NA	NA	NA	NA	NA	NA	NA
251-300	NA	NA	NA	NA	1	0	NA	NA
301-350	27	0	10	0	3	0	4	0
351-400	35	0	39	0	16	0	6	0
401-450	27	0	43	0	19	0	14	0
451-500	22	0	21	0	18	0	19	0
> 500	27	0	32	0	20	0	14	0

Males								
	1996		1997		1998		1999	
Length (mm)	Tagged	Recap.	Tagged	Recap.	Tagged	Recap.	Tagged	Recap.
≤ 250	NA	NA	5	0	NA	NA	NA	NA
251-300	1555	0	1369	0	1333	0	921	8
301-350	1936	0	1711	0	1139	9	1245	36
351-400	194	0	370	0	269	5	399	27
401-450	25	0	38	0	26	0	45	5
451-500	5	0	4	0	NA	NA	3	0
> 500	NA	NA	1	0	3	0	NA	NA
Females								
Length (mm)	Tagged	Recap.	Tagged	Recap.	Tagged	Recap.	Tagged	Recap.
≤ 250	NA	NA	NA	NA	NA	NA	NA	NA
251-300	4	0	1	0	NA	NA	NA	NA
301-350	32	0	12	0	8	0	2	0
351-400	33	0	37	0	32	0	34	0
401-450	8	0	21	0	29	0	33	0
451-500	NA	NA	23	0	10	0	32	0
> 500	6	0	44	0	20	0	39	0

Males								
	2000		2001		2002		2003	
Length (mm)	Tagged	Recap.	Tagged	Recap.	Tagged	Recap.	Tagged	Recap.
≤ 250	1	0	1	0	1	0	1	0
251-300	595	7	1507	1	1149	9	574	0
301-350	1458	48	1069	13	1635	36	1311	0
351-400	416	37	514	22	471	33	386	0
401-450	58	7	84	11	87	11	60	0
451-500	10	0	11	0	8	0	3	0
> 500	1	0	1	0	NA	NA	1	0
Females								
Length (mm)	Tagged	Recap.	Tagged	Recap.	Tagged	Recap.	Tagged	Recap.
≤ 250	NA	NA	NA	NA	NA	NA	NA	NA
251-300	NA	NA	NA	NA	NA	NA	1	0
301-350	2	0	4	0	1	0	2	0
351-400	8	0	19	0	10	0	17	1
401-450	10	0	39	0	22	0	14	0
451-500	7	0	36	2	21	0	26	1
> 500	5	0	32	1	40	0	33	0

Males								
	2004		2005		2006		2007	
Length (mm)	Tagged	Recap.	Tagged	Recap.	Tagged	Recap.	Tagged	Recap.
≤ 250	4	0	1	0	19	0	NA	NA
251-300	1137	2	874	0	1442	0	871	3
301-350	939	16	1181	1	1122	0	2202	37
351-400	460	10	308	0	254	0	544	34
401-450	71	2	71	1	50	1	57	6
451-500	7	0	9	0	5	0	8	1
> 500	NA	NA	2	0	5	0	1	0
Females								
Length (mm)	Tagged	Recap.	Tagged	Recap.	Tagged	Recap.	Tagged	Recap.
≤ 250	NA	NA	NA	NA	NA	NA	NA	NA
251-300	NA	NA	NA	NA	NA	NA	NA	NA
301-350	6	0	5	0	4	0	4	0
351-400	14	0	31	0	19	0	9	0
401-450	20	0	49	0	22	0	14	0
451-500	34	0	54	0	26	0	25	0
> 500	52	0	78	1	66	0	64	2

Males								
	2008		2009		2010		2011	
Length (mm)	Tagged	Recap.	Tagged	Recap.	Tagged	Recap.	Tagged	Recap.
≤ 250	2	0	NA	NA	NA	NA	3	0
251-300	219	1	1729	6	743	29	618	0
301-350	1578	16	666	4	1378	114	1427	2
351-400	764	21	439	1	248	53	296	0
401-450	111	4	91	0	77	20	30	0
451-500	21	1	9	0	6	0	1	0
> 500	3	0	3	0	NA	NA	2	0
Females								
Length (mm)	Tagged	Recap.	Tagged	Recap.	Tagged	Recap.	Tagged	Recap.
≤ 250	NA	NA	NA	NA	NA	NA	NA	NA
251-300	1	0	NA	NA	NA	NA	NA	NA
301-350	29	0	5	0	3	0	23	0
351-400	109	1	28	0	5	0	59	0
401-450	79	0	36	0	10	0	10	0
451-500	53	0	44	0	11	1	7	0
> 500	101	4	47	0	36	3	12	0

Males				
	2012		Total	
Length (mm)	Tagged	Recap.	Tagged	Recap.
≤ 250	NA	NA	49	0
251-300	173	0	20225	66
301-350	1059	0	26433	332
351-400	543	0	8014	243
401-450	47	0	1226	68
451-500	6	0	143	2
> 500	1	0	31	0
Females				
Length (mm)	Tagged	Recap.	Tagged	Recap.
≤ 250	NA	NA	NA	NA
251-300	NA	NA	8	0
301-350	4	0	190	0
351-400	13	0	573	2
401-450	26	0	545	0
451-500	8	0	497	4
> 500	24	0	792	11

Table 37. Length- and year- specific release and recapture data for male and female walleye harvest by spear fishing in Annabelle Lake, Wisconsin. Recaptures are only included if they occurred within 180 days of release. Releases and recaptures are tabulated in 50 millimeter length bins. Annabelle Lake is one of the lakes included in the GLIFWC data series.

Males								
	1995		1996		1997		1999	
Length (mm)	Tagged	Recap.	Tagged	Recap.	Tagged	Recap.	Tagged	Recap.
≤ 250	NA	NA	NA	NA	NA	NA	1	0
251-300	76	0	24	0	140	0	64	2
301-350	85	0	22	0	65	0	191	10
351-400	75	0	15	0	26	0	27	1
401-450	5	0	3	0	6	0	6	2
451-500	1	0	1	0	NA	NA	1	0
> 500	NA	NA	1	0	NA	NA	NA	NA
Females								
Length (mm)	Tagged	Recap.	Tagged	Recap.	Tagged	Recap.	Tagged	Recap.
≤ 250	NA	NA	NA	NA	NA	NA	NA	NA
251-300	NA	NA	NA	NA	NA	NA	NA	NA
301-350	2	0	NA	NA	2	0	17	1
351-400	13	0	15	0	6	0	17	0
401-450	10	0	16	0	2	0	1	0
451-500	4	0	9	0	4	0	1	0
> 500	5	0	13	0	6	0	8	0

Males								
	2001		2002		2003		2005	
Length (mm)	Tagged	Recap.	Tagged	Recap.	Tagged	Recap.	Tagged	Recap.
≤ 250	NA	NA	NA	NA	NA	NA	NA	NA
251-300	3	0	180	0	24	0	79	0
301-350	7	0	123	0	37	0	77	0
351-400	1	0	43	0	12	0	11	0
401-450	NA	NA	3	0	NA	NA	NA	NA
451-500	NA	NA	NA	NA	1	0	NA	NA
> 500	NA	NA	4	0	NA	NA	NA	NA
Females								
Length (mm)	Tagged	Recap.	Tagged	Recap.	Tagged	Recap.	Tagged	Recap.
≤ 250	NA	NA	NA	NA	NA	NA	NA	NA
251-300	NA	NA	1	0	NA	NA	NA	NA
301-350	NA	NA	6	0	4	0	NA	NA
351-400	1	0	19	0	9	0	5	0
401-450	NA	NA	8	0	6	0	2	0
451-500	NA	NA	3	0	2	0	NA	NA
> 500	NA	NA	6	0	2	0	1	0

Males								
	2007		2008		2009		2011	
Length (mm)	Tagged	Recap.	Tagged	Recap.	Tagged	Recap.	Tagged	Recap.
≤ 250	NA	NA	3	0	NA	NA	3	0
251-300	61	0	106	0	135	0	178	0
301-350	77	0	100	0	146	0	107	0
351-400	8	0	35	0	18	0	19	0
401-450	2	0	1	0	4	0	1	0
451-500	NA	NA	NA	NA	NA	NA	NA	NA
> 500	NA	NA	NA	NA	NA	NA	NA	NA
Females								
Length (mm)	Tagged	Recap.	Tagged	Recap.	Tagged	Recap.	Tagged	Recap.
≤ 250	NA	NA	NA	NA	NA	NA	NA	NA
251-300	1	0	2	0	1	0	4	0
301-350	3	0	9	0	8	0	7	0
351-400	16	0	5	0	6	0	10	0
401-450	3	0	NA	NA	1	0	5	0
451-500	2	0	NA	NA	NA	NA	3	0
> 500	5	0	1	0	2	0	3	0

Males		
	Total	
Length (mm)	Tagged	Recap.
≤ 250	7	0
251-300	1070	2
301-350	1037	10
351-400	290	1
401-450	31	2
451-500	4	0
> 500	5	0
Females		
Length (mm)	Tagged	Recap.
≤ 250	NA	NA
251-300	9	0
301-350	58	1
351-400	122	0
401-450	54	0
451-500	28	0
> 500	52	0

Table 38. Length- and year- specific release and recapture data for male and female walleye harvest by spear fishing in Sherman Lake, Wisconsin. Recaptures are only included if they occurred within 180 days of release. Releases and recaptures are tabulated in 50 millimeter length bins. Sherman Lake is one of the lakes included in the GLIFWC data series.

Males								
	1995		1996		1997		1998	
Length (mm)	Tagged	Recap.	Tagged	Recap.	Tagged	Recap.	Tagged	Recap.
≤ 250	1	0	NA	NA	NA	NA	NA	NA
251-300	37	0	20	0	31	0	182	0
301-350	220	0	90	0	67	0	75	0
351-400	124	0	134	0	79	0	54	0
401-450	59	0	38	0	31	0	32	0
451-500	12	0	5	0	7	0	4	0
> 500	NA	NA	NA	NA	NA	NA	NA	NA
Females								
Length (mm)	Tagged	Recap.	Tagged	Recap.	Tagged	Recap.	Tagged	Recap.
≤ 250	NA	NA	NA	NA	NA	NA	NA	NA
251-300	NA	NA	NA	NA	NA	NA	NA	NA
301-350	3	0	NA	NA	NA	NA	NA	NA
351-400	19	0	17	0	6	0	3	0
401-450	9	0	9	0	13	0	12	0
451-500	19	0	NA	NA	4	0	6	0
> 500	13	0	5	0	3	0	7	0

Males								
	1999		2000		2001		2002	
Length (mm)	Tagged	Recap.	Tagged	Recap.	Tagged	Recap.	Tagged	Recap.
≤ 250	NA	NA	NA	NA	NA	NA	NA	NA
251-300	51	0	70	0	18	0	23	0
301-350	167	0	79	0	57	0	46	0
351-400	74	0	60	0	28	0	15	0
401-450	43	0	43	0	37	0	7	0
451-500	5	0	12	0	15	0	8	0
> 500	NA	NA	3	0	NA	NA	2	0
Females								
Length (mm)	Tagged	Recap.	Tagged	Recap.	Tagged	Recap.	Tagged	Recap.
≤ 250	NA	NA	NA	NA	NA	NA	NA	NA
251-300	NA	NA	NA	NA	NA	NA	NA	NA
301-350	NA	NA	NA	NA	NA	NA	NA	NA
351-400	NA	NA	NA	NA	2	0	NA	NA
401-450	1	0	3	0	5	0	1	0
451-500	NA	NA	4	0	4	0	2	0
> 500	2	0	7	0	11	0	8	0

Males								
	2003		2004		2005		2006	
Length (mm)	Tagged	Recap.	Tagged	Recap.	Tagged	Recap.	Tagged	Recap.
≤ 250	NA	NA	NA	NA	NA	NA	NA	NA
251-300	65	0	13	0	35	0	26	0
301-350	156	0	10	0	52	0	49	0
351-400	61	0	8	0	27	0	28	0
401-450	26	0	7	0	8	0	21	0
451-500	8	0	7	0	6	0	11	0
> 500	2	0	3	0	3	0	13	0
Females								
Length (mm)	Tagged	Recap.	Tagged	Recap.	Tagged	Recap.	Tagged	Recap.
≤ 250	NA	NA	NA	NA	NA	NA	NA	NA
251-300	NA	NA	NA	NA	NA	NA	NA	NA
301-350	NA	NA	NA	NA	NA	NA	NA	NA
351-400	3	0	NA	NA	NA	NA	1	0
401-450	5	0	NA	NA	2	0	4	0
451-500	5	0	1	0	9	0	3	0
> 500	16	0	1	0	8	0	13	0

Males								
	2007		2008		2009		2010	
Length (mm)	Tagged	Recap.	Tagged	Recap.	Tagged	Recap.	Tagged	Recap.
≤ 250	NA	NA	19	0	6	1	1	0
251-300	47	2	115	8	80	11	226	13
301-350	28	2	69	4	40	18	41	3
351-400	18	4	4	1	11	4	10	1
401-450	7	3	2	1	2	1	NA	NA
451-500	1	1	2	0	1	0	NA	NA
> 500	2	2	NA	NA	NA	NA	NA	NA
Females								
Length (mm)	Tagged	Recap.	Tagged	Recap.	Tagged	Recap.	Tagged	Recap.
≤ 250	NA	NA	NA	NA	NA	NA	NA	NA
251-300	NA	NA	3	0	1	0	NA	NA
301-350	NA	NA	14	2	5	1	1	0
351-400	1	1	7	0	9	2	4	1
401-450	5	1	NA	NA	8	1	3	1
451-500	4	2	3	0	3	1	4	1
> 500	14	2	15	1	5	0	4	1

Males						
	2011		2012		Total	
Length (mm)	Tagged	Recap.	Tagged	Recap.	Tagged	Recap.
≤ 250	NA	NA	22	0	49	1
251-300	50	8	67	0	1156	42
301-350	59	12	43	0	1348	39
351-400	4	2	8	0	747	12
401-450	NA	NA	NA	NA	363	5
451-500	NA	NA	NA	NA	104	1
> 500	NA	NA	NA	NA	28	2
Females						
Length (mm)	Tagged	Recap.	Tagged	Recap.	Tagged	Recap.
≤ 250	NA	NA	NA	NA	0	0
251-300	3	0	NA	NA	7	0
301-350	10	0	1	0	34	3
351-400	11	1	1	0	84	5
401-450	5	2	2	0	87	5
451-500	4	0	NA	NA	75	4
> 500	5	1	2	0	139	5