

SUPPLEMENT

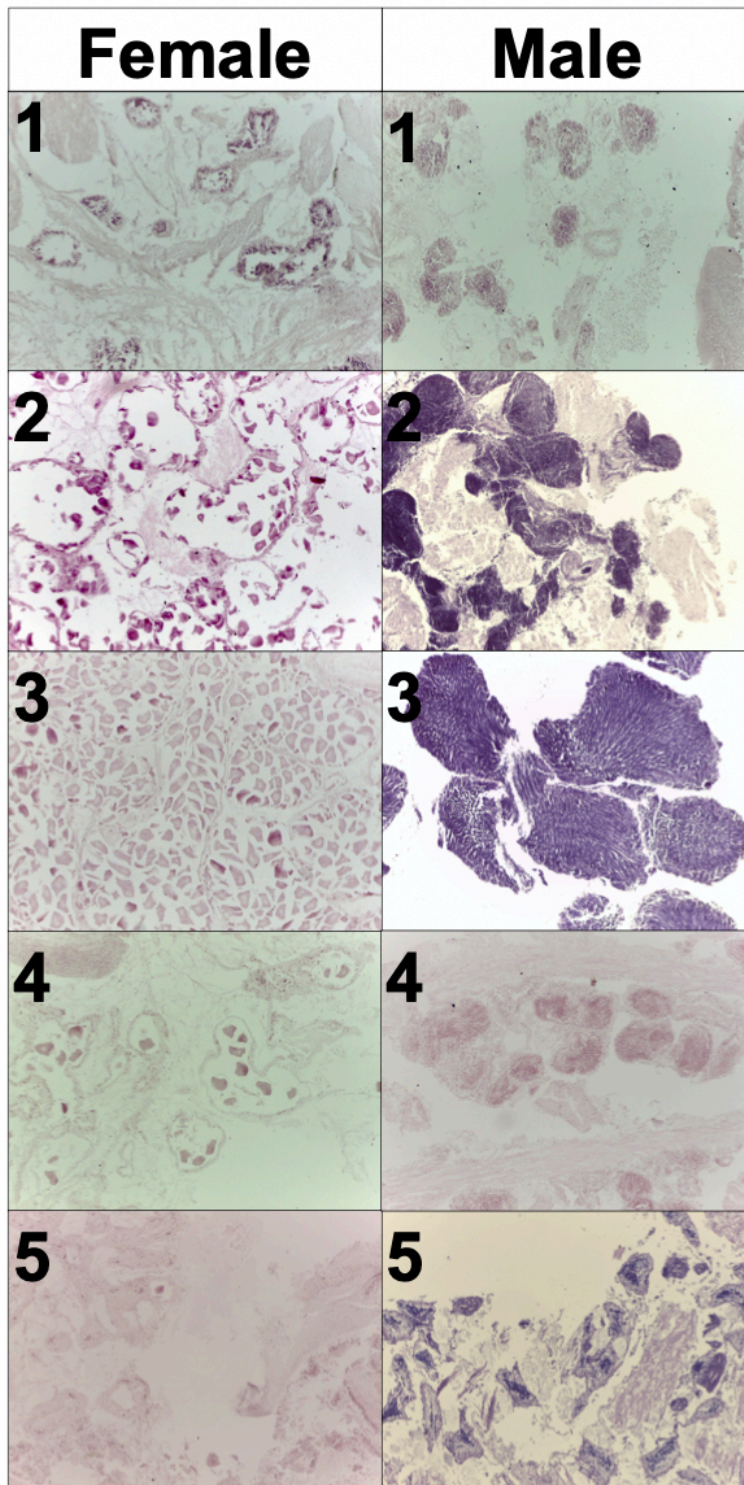


Figure S1. Photomicrographs showing developmental stages (1, Early Active; 2, Late Active; 3, Ripe; 4, Partially Spent; 5, Spent) of representative *T. stultorum* female and male reproductive follicles. All photos taken at 100x magnification.

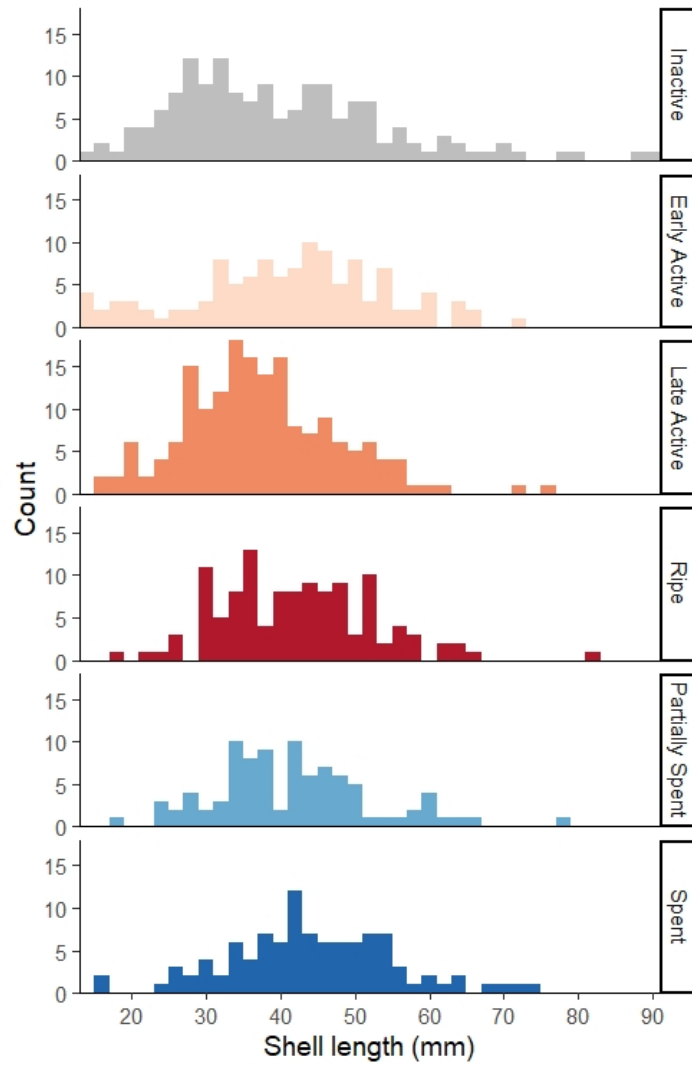


Figure S2. Pismo clam length frequency for each reproductive stage. Clams <20 mm were observed in all reproductive stages.

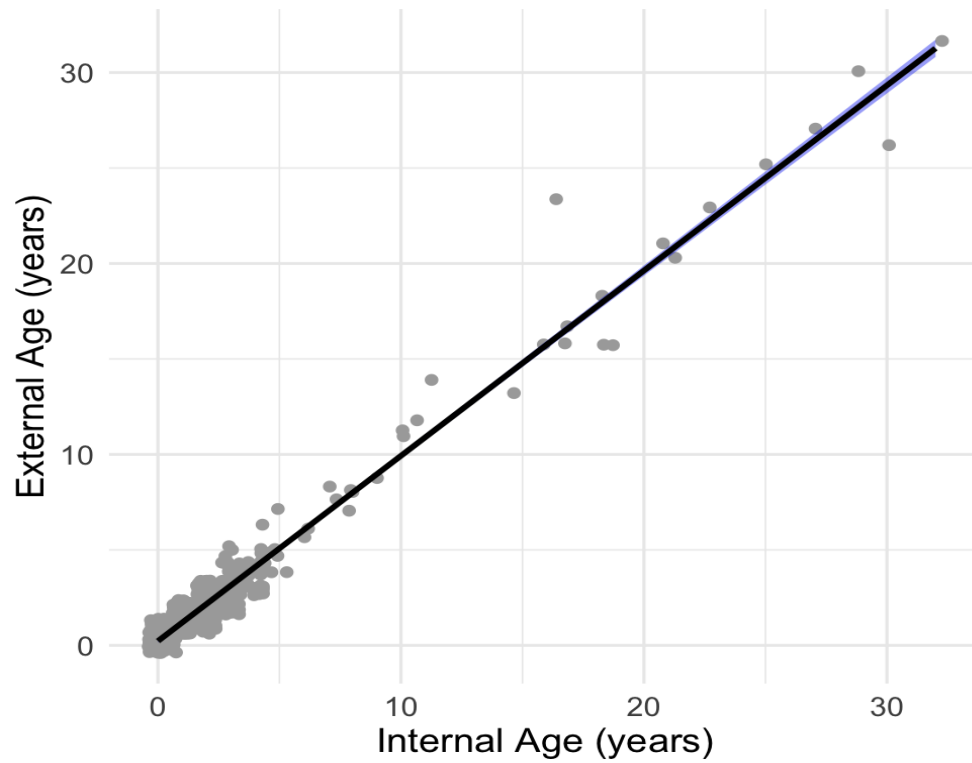


Figure S3. Relationships between internal and external age estimates ($n = 654$). Points are jittered to show overlap in age estimates. Solid line shows linear trend and blue shading indicates 95% confidence interval.

Table S1. Summary of monthly collections and environmental data. Collection period includes the year and month groups of specimens were collected. Specimens collected indicates the number used for a body condition index (BCI #), histology (Histology #), and the total number collected (Total #). Environmental data includes the average chlorophyll-a measurement and average temperature from the California Harmful Algal Bloom Monitoring and Alert Program, and mean monthly day length based on latitude (Forsythe et al. 1995, Hijmans 2019).

Collection Period		Specimens Collected			Environmental Data		
Year	Month	BCI #	Histology #	Total #	Average Chl- <i>a</i> (mg/m ³)	Average Temperature (C)	Day length (hrs)
2018	1	15	17	32	4.95	13.53	10.08
2018	2	15	20	35	5.8	12.63	10.89
2018	3	15	20	35	3.77	12.53	11.94
2018	4	30	38	68	4	13.5	13.05
2018	5	30	37	67	3.94	12.7	13.99
2018	6	30	38	68	4.55	14.75	14.48
2018	7	23	40	63	5.93	17.44	14.27
2018	8	27	40	67	6.75	17.88	13.48
2018	9	28	37	65	10.02	16.8	12.43
2018	10	29	39	68	7.18	17.18	11.33
2018	11	30	40	70	10.35	16.43	10.36
2018	12	30	40	70	4.27	14.85	9.84
2019	1	30	39	69	2.7	14.03	10.08
2019	2	30	40	70	3.99	13.68	10.89
2019	3	25	30	55	2.58	14.46	11.94
2019	4	30	30	60	5.11	14.18	13.05
2019	5	29	30	59	8.13	13.88	13.99
2019	6	29	30	59	18.56	15.82	14.48
2019	7	24	30	54	23.04	17.0	14.27
2019	8	29	30	59	22.48	17.38	13.48
2019	9	28	30	58	27.03	16.93	12.43
2019	10	30	30	60	33.49	15.18	11.33
2019	11	30	30	60	14.58	15.98	10.36
2019	12	30	30	60	6.13	14.1	9.84