

# Marine Resource Advisory

**A Sea Grant Advisory Service**

ADVISORY NO. 16

JUNE 1979

## VIRGINIA MARINE TURTLE STRANDING FORM

Date of Find \_\_\_\_\_ (Please respond as soon as possible).

### LOCATION

(be as accurate as possible) \_\_\_\_\_

### IDENTIFICATION OF TURTLE (see reverse side of sheet)

positive                      unsure

SEX \_\_\_\_ Male            (tail extends beyond rear edge of top shell).  
      \_\_\_\_ Female        (tail shorter than edge of top shell).

Have you ever seen marine turtles in this area before? Yes \_\_\_\_ No \_\_\_\_ Explain: \_\_\_\_\_

### MEASUREMENT DATA (Measure along the central ridge (curve) front to rear edge and side to side at widest point).

Top shell length \_\_\_\_\_ inches (along curve)

Top shell width \_\_\_\_\_ inches (along curve at widest part)

Head width \_\_\_\_\_ inches (at widest point)

Tag No. and description \_\_\_\_\_  
(if tagged) \_\_\_\_\_

### CONDITION OF TURTLE

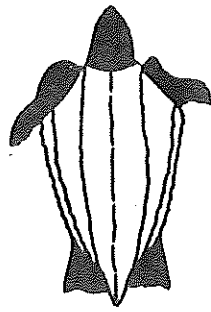
\_\_\_\_ Shell and body intact, little of no foul odor or bloating.

\_\_\_\_ Shell not intact and/or body bloated and discolored.

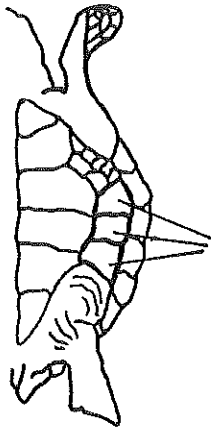
\_\_\_\_ Skeleton only.

It is important to note any **MUTILATION** of the body, missing limbs, gashes, missing eyes, wounds, etc., in order to determine possible cause of death. Please list all/any such signs that describe the turtle's condition:

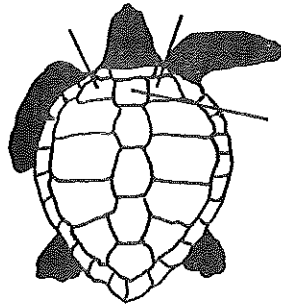
Please RETURN THIS FORM to: MARINE TURTLES, Virginia Institute of Marine Science, Gloucester Point, VA 23062, Tel. (804) 642-2111, Ext. 151.



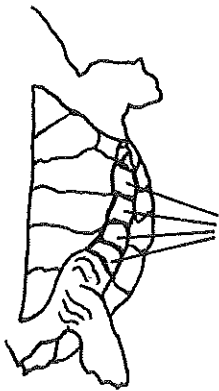
**ATLANTIC LEATHERBACK:** Seven longitudinal ridges on a leathery top shell, without plates. Our only black marine turtle. Lower part of head, limbs and body may be spotted with white or yellow. Often very large (to 7 feet).



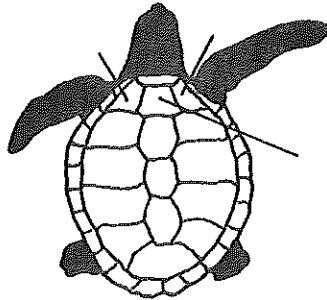
3  
bridge  
plates



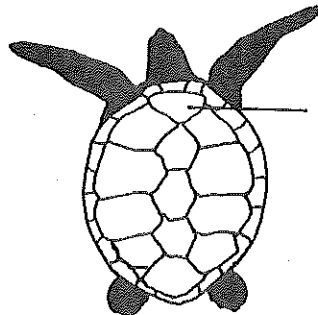
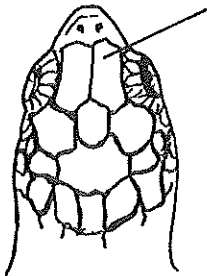
**ATLANTIC LOGGERHEAD:** Top shell reddish brown in color. Has "extra" pair of shoulder plates touching neck plate. May be large (>100 lbs.). Three plates on lower shell bridge.



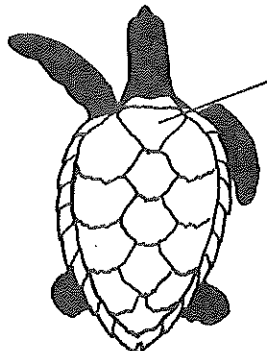
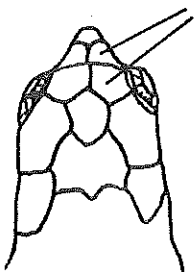
4  
bridge  
plates



**ATLANTIC RIDLEY:** Top shell grey and almost circular. May be some white on head, limbs and bottom shell. Has "extra" pair of shoulder plates touching neck plate. Usually small size in Virginia (< 40 lbs.). Four plates on lower shell bridge.



**ATLANTIC GREEN:** Top shell is broad, with plates barely overlapping, if at all. Olive to brown color (sometimes mottled). Has large triangular central plate touching neck plate and two plates between eyes.



**ATLANTIC HAWKSBILL:** Top shell shield-shaped, dark brown or tortoise shell in color; plates on top shell broadly overlapping. Has large triangular central plate touching neck plate and four plates between eyes.