

VIMS
OL
632
C67
AE
1984/86

Completion Report, 1984-1986

Project Title: Study of Alosa stock composition and year-class strength in Virginia

Project Number: AFC 13-1-3

Project Period: 1 January 1984 - 31 July 1987

Prepared by

Joseph G. Loesch, William H. Kriete, Jr.,
and Roanne P. Trapani

Virginia Institute of Marine Science
School of Marine Science
College of William and Mary
Gloucester Point, Virginia 23062

TABLE OF CONTENTS

	Page Number
Preface.....	iii
Acknowledgments.....	v
List of Tables.....	vi
List of Figures.....	viii
Executive Summary.....	ix
Job 1. Evaluation of the <u>Alosa</u> Stocks and Fisheries in Virginia.....	1
Introduction.....	1
Materials and Methods.....	1
Results and Discussion.....	3
Total Virginia Landings.....	3
James River Landings.....	4
Chickahominy River Landings.....	5
York River Landings.....	5
Rappahannock River Landings.....	5
1984-1986 Landings.....	6
Age Composition.....	6
Length and Weight Analysis.....	7
Species Composition.....	8
Sex Ratios.....	8
Mortality Estimates.....	8
Job 2. Annual Index of Juvenile <u>Alosa</u> Abundance.....	10
Introduction.....	10
Materials and Methods.....	10
Results and Discussion.....	11
Index of Abundance.....	12
Growth.....	12
Natural Mortality.....	13
Job 3. Analysis of American Shad Growth: Circa 1970 versus Circa 1980.....	14
Introduction.....	14
Materials and Methods.....	14
Results and Discussion.....	16
Literature Cited.....	18

PREFACE

This presentation is the completion report for P. L. 89-304, AFC 13-1-3 project "Study of Alosa stock composition and year-class strength in Virginia," for the period 1 January 1984 to 31 July 1986. The fishes of concern were the alewife (Alosa pseudoharengus), American shad (A. sapidissima), and the blueback herring (A. aestivalis).

The abundance of the Alosa stocks, once an important component of the landings of Virginia fisheries, dramatically decreased in the last decade. The 1981 landings of Alosa species in Virginia were the lowest ever recorded. American shad and river herring are also pursued by recreational fishermen in Virginia, but the extent and success of this activity is largely unknown. Additionally, these species have a vital ecological role. Young-of-the-year Alosa are the dominant pelagic prey species in their extensive freshwater and upper estuarine nursery grounds. After spawning, adults return to the sea and are prey of many marine piscivores. It is important that studies of the Alosa stocks in Virginia be continued. Current data, as well as historical data, are needed in order that data analyses may make constructive contributions to rational management strategies.

The research presented herein directly addresses research concerns stated in the Shad and River Herring Action Plan and augments on-going monitoring research and extant data bases. These data will be a pertinent contribution to the total data base that is being constructed to assist in the formulation of management strategies for the east coast Alosa stocks.

The following jobs were contracted by the Virginia Institute of Marine Science.

Job 1: Evaluation of the Alosa Stocks and Fisheries in Virginia

Objectives

1. Estimate fishing effort, landings, and catch-per-unit-of-effort (CPUE) of adult river herring (alewife and blueback herring) and American shad in Virginia during the 1985 fisheries.
2. Determine the present status of the stocks relative to former years by comparison of landings and CPUE.
3. Estimate current biological statistics (age and size frequencies, species composition, etc.) of river herring and American shad.
4. Estimate the total contributions of year classes to the river herring fishery.

Job 2: A Study of Juvenile Alosa Abundance, Growth and Mortality

Objectives

1. Determine an index of abundance for juvenile river herring and American shad.
2. Estimate growth and mortality rates of juveniles in tidal freshwater.

Job 3: Analysis of American Shad Growth: Circa 1970 versus Circa 1980

Objectives

1. Back calculate length-at-age from scales collected in a period of high American shad abundance (Circa 1970), and from scales collected in a period of low abundance (1980).
2. Statistically compare the length-at-age relationships of the two groups.

ACKNOWLEDGMENTS

We are indebted to the following Virginia Institute of Marine Science personnel for their assistance in this project: Loisirene Blumberg, Joice Davis, Deane Estes, Carol Furman, Lillian Hudgins, Curtis Leigh, James Owens, and Gloria Rowe. We also express our thanks to the many commercial fishermen who have so kindly helped us when we asked for their assistance. The Virginia Landings data were supplied by the Virginia Marine Resources Commission.

The project was funded, in part, by the United States National Marine Fisheries Service, Northeast Region, through Public Law 89-304.

LIST OF TABLES

Table	Page Number
1.1. Summary of sample data from the <u>Alosa</u> commercial fisheries during the 1986 spawning run in the major Virginia tributaries to Chesapeake Bay.....	22
1.2. Number of active pound net stands in Chesapeake Bay and its Virginia tributaries during January-June 1986.....	23
1.3. Number of stake gill net stands fished in Virginia rivers 1984-1986 (A) and linear meters of gill netting fished primarily for American shad per 5-mile block (B) in 1986. Figures in parentheses represent the total meters of gill netting in the James, York and Rappahannock rivers.....	24
1.4. Yearly catch-per-unit-of-effort for American shad in stake gill nets and river herring in pound nets for the years 1975-1986. Stake gill net effort is in meters of netting. Pound net effort is in number of nets per season.....	25
1.5. Estimated catch in kg of American shad by stake gill nets for 5-mile sections in the James River 1986 by half-month intervals and by sex. Effort from Table 1.3. Index in kg/m of net.....	26
1.6. Yearly landings in kg of American shad by pound nets and stake gill nets, and river herring by pound nets. Landings for the James, York and Rappahannock rivers are estimations.....	27
1.7. Estimated catch in kg of American shad by stake gill nets for 5-mile sections in the York River 1986 by half-month intervals. Effort from Table 1.3. Index in kg/m of net.....	28
1.8. Estimated catch in kg of American shad and river herring by pound nets in the Rappahannock River 1986 by half-month intervals. Number of index nets has been rounded to the nearest whole value.....	29
1.9. Estimated catch in kg of American shad by stake gill nets in the Rappahannock River 1986 by half-month intervals. Effort from Table 1.3. Index in kg/m of net.....	30

List of Tables (continued)

Table	Page Number
1.10. Year-class frequency of alewife (sexes pooled) in the York River commercial fishery samples, 1986.....	31
1.11. Year-class frequency of blueback herring (sexes pooled) in the York River commercial fishery samples, 1986....	32
1.12. Year-class frequency of alewife (sexes pooled) in the Rappahannock River commercial fishery samples, 1986.....	33
1.13. Year-class frequency of blueback herring (sexes pooled) in the Rappahannock River commercial fishery samples, 1986.....	34
1.14. Year-class frequency of American shad in the Virginia commercial gill net fishery, 1986.....	35
1.15. Length (mm) and weight (g) statistics for river herring in the York and Rappahannock rivers, 1986.....	36
1.16. Length (mm) and weight (g) statistics for American shad in the James, York and Rappahannock gill net fisheries, 1986.....	37
1.17. Estimated rates of instantaneous total mortality (Z), annual mortality (A), survival (S), and exploitation (E) for alewife and blueback herring in the Rappahannock River. A natural mortality rate of 1.1 was assumed....	38
2.1. Maximal catch-per-unit-of-effort (CPUE) values for juvenile <u>Alosa</u> in the Mattaponi and Pamunkey rivers, 1979-1986.....	39
2.2. Estimates of instantaneous daily mortality for juvenile <u>Alosa</u> in the Mattaponi (M) and Pamunkey (P) rivers, 1979-1986.....	40
3.1 Observed mean fork lengths of American shad for 1968-1972 era.....	41
3.2 Back-calculated mean lengths-at-age of American shad for 1968-1972 era.....	42
3.3 Observed mean for lengths of American shad for 1979-1983 era.....	43
3.4 Back-calculated mean lengths-at-age of American shad for 1979-1983 era.....	44

LIST OF FIGURES

Figure		Page Number
1.1.	Area designations utilized during aerial pound net counts.....	45
1.2	Virginia landings, 1966-1986.....	46
2.1.	Growth curves for juvenile alewives, 1986.....	47
2.2.	Growth curves for juvenile blueback herring, 1986.....	48
2.3.	Growth curves for juvenile American shad, 1986.....	49

EXECUTIVE SUMMARY

1. Landings in Virginia of all Alosa species decreased in 1986 relative to 1985. Overall gill net effort declined, accompanied by an increase in catch-per-unit-of-effort (CPUE).
2. Gill net fishermen landed an estimated 138 MT of American shad in the James, York and Rappahannock rivers.
3. Age 5 blueback herring remained a strong component of the pound net catches in 1986 whereas the modal age for alewife in the York River was age 5 and age 4 was the modal age in the Rappahannock River.
4. Mean estimates of total mortality (Z) were 1.47 and 1.61 for alewife and blueback herring, respectively.
5. Juvenile indices of abundance for American shad were again higher in the Mattaponi River than in the Pamunkey River. Indices for alewife and blueback herring were higher in the Pamunkey River.
6. Data indicate higher mortality rates of juvenile Alosa in the Pamunkey River than in the Mattaponi River.

Job 1. Evaluation of the Alosa Stocks and Fisheries in Virginia

INTRODUCTION

The Virginia Institute of Marine Science (VIMS) continued its annual assessment of the Alosa stocks and fisheries in Virginia inshore waters. These data are essential for any eventual consideration of an Alosa management plan in Virginia, and for the State-Federal coastwide management plan presently being developed.

MATERIALS AND METHODS

Samples of river herring were collected weekly from 31 March to the first week of May from the York River and weekly from mid-March to the first week in May from the Rappahannock River. American shad samples were collected in April from the York and Rappahannock fisheries (Table 1.1). Due to the paucity of American shad no commercial samples were collected from the James River in 1986.

When available, 22.7 kg of river herring were randomly sampled from commercial pound net catches in the York and Rappahannock rivers. These nets employ a 50.8 mm stretched mesh in their entrapment section, and are assumed to be nonselective for river herring age 3 or older.

Random samples of up to 100 American shad were taken from commercial catches. The fishery primarily employs gill nets with 12.4 to 14.0 cm stretched mesh which favors the capture of females, the larger of the sexes.

River herring samples were returned to VIMS where species, sex, fork length, and weight were recorded. These data were used to partition the

log-book estimates of landings in each sampling period into biomass and numbers-at-age. American shad data, except for age, were collected at the sampling site. Ages of river herring were determined from otoliths, while scales that were collected are held in reserve. American shad were aged from scales by the method of Cating (1953), i.e., counting the number of annuli and spawning check marks, and adding a year for the scale edge. A sonic digitizer microcomputer complex was used to "read" American shad scales (Loesch and Kriete, 1983).

Pound net catch estimates for fisheries in the Rappahannock River were determined by multiplying the catch-per-unit-of-effort (CPUE) (kg/net per half-month) of the index nets by the number of nets actively fishing (weighted by net size) in each strata of the river. Index nets are those for which daily records were kept by cooperating fishermen. Effort was determined by semi-monthly aerial counts of active pound nets (Table 1.2 and Fig. 1.1). Seasonal pound net CPUE was determined by dividing total landings by the average number of nets fished, adjusted for the length of the fishing season for each species.

Pound net fishermen in the lower strata of the Rappahannock River have not supplied catch and effort data since 1982. An estimate of the missing data for the lower portion of the river was made from its average proportion of the total catch in the upper and lower portions in the years 1978-1982.

The catch-and-effort data for alewife and blueback herring were pooled because the fishery does not target one species or the other and both federal and state agencies report all river herring landings as alewife.

Stake gill net catch estimates for the fisheries in the James, York, and Rappahannock rivers were determined by multiplying the CPUE (kg/m of net per half-month) of index nets by meters of stake gill netting in 5-nautical

mile strata of the river. Effort was determined by a count of stake gill nets during the peak of the American shad fishing season (Table 1.3). Effort for miles 15-45 on the James River was adjusted through interviews with fishermen since some of the effort was directed toward white perch and catfish. Stake gill net effort on the York River was also adjusted as it was determined that many of the stands that were set were never fished (no nets put in place). Yearly stake gill net CPUE was determined by dividing total landings by total netting fished for shad.

Annual Alosa landings data from all Virginia waters and the Potomac River for the years 1965-1972 were obtained from the respective U.S. Fishery Statistical Digests. The 1973-1976 data were from the annual summaries of Current Fisheries Statistics, National Marine Fisheries Service (NMFS), Division of Statistics and Market News. Since 1976, total landings data for Virginia have been obtained from the Virginia Marine Resources Commission (VMRC). As was reported in 1985, estimates of the 1986 catches of river herring in the Rappahannock and York rivers were made from VIMS logbook data. The total catch in Virginia was determined by adding our estimates to the landings reported by VMRC for river herring fisheries other than in the Rappahannock and York rivers.

The PRIME 850 computer at VIMS was used in conjunction with the statistical package SPSS (Nie et al. 1975) to analyze data, and to construct tables and figures.

RESULTS AND DISCUSSION

Total Virginia Landings

We estimate that approximately 427 metric tons (MT) of river herring were landed in Virginia in 1986. The landings were a 55% decrease relative

to our estimated 1985 catch (951 MT). VMRC data indicate that American shad landings in Virginia increased 8% in 1986 (311 MT) relative to 1985 (287 MT).

Decline in Alosa landings in the last two years probably do not reflect decreases in stock sizes. In 1985, the onset of cold weather shortly after the commencement of spawning reduced Alosa availability. Also, reported landings have been reduced by the method of handling catches of Alosa, particularly river herring. Increasing numbers of river herring, and to some degree American shad, are simply being sold as scrap.

Some specific contributions to the total 1986 landings of alosids are considered below.

James River Landings

Our aerial observations of pound net effort showed that no pound nets were set in the James River during 1986. The capture of finfishes is severely restricted as a result of kepone contamination, making pound net operations in the river unprofitable.

It was estimated from the logbooks of cooperating fishermen that stake gill nets caught about 30 MT of American shad in 1986 (Table 1.5), a 66% decrease relative to 1985 (Table 1.6). As a result of depressed landings, an unknown proportion of the catch in the upper strata (miles 20-60) was sold to local markets, and it is possible that landings for that portion of the river are underestimated.

Peak landings in 1986 occurred during the second half of March with the greatest contribution occurring in the lower strata (miles 05-15).

Chickahominy River Landings

Landings data collected by VMRC showed that approximately 147 MT of river herring were caught in the haul seine fishery in the Chickahominy River in 1986. The landings were about 92 MT more than the 1985 catch, and represented a substantial increase relative to 1985 river herring landings in the river. No other alosid fisheries are conducted in the Chickahominy River.

York River Landings

Estimated landings from logbook data showed a continued decrease in both stake gill net landings of American shad and the associated CPUE in 1986 relative to 1985 (Tables 1.4 and 1.6). Much of the decrease can be attributed to a decrease in effort. This does not explain the dramatic decline that began in 1984 and it must be presumed that at least a portion of the decrease is due to a decline in spawning population. Peak landings of 40 MT of shad occurred during the second half of March (Table 1.7).

Rappahannock River Landings

Analysis of logbook data from cooperating pound net fishermen indicated that about 0.6 MT of American shad and 82 MT of river herring were landed in the Rappahannock River in 1986 (Table 1.9). Much of the dramatic decrease in river herring landings can be attributed to the lack of market for river herring. Except for a few local markets most of the river herring were sold for scrap and thus were never reported as river herring. Much of the scrap is then sold in southern states when the supply of crab pot bait there is depleted.

Stake gill netters in the Rappahannock River landed 3 MT of American shad in 1986 (Table 1.10). The decrease in landings may be in part due to a decrease in effort as a result of the closure of the river to striped bass fishing from mile 38 to mile 68 as well as the cost associated with setting a stake gill net.

1984-1986 Landings

Landings of American shad and river herring have declined in all rivers in Virginia since 1984. As previously noted, much of the decline may be attributed to a decrease in fishing effort or a lack of market. River herring from most of the pound nets set in the lower strata (miles 0-30) are sold for pet food or to a reduction plant and are never recorded as river herring. On the other hand, American shad are sold to small local markets and these too never enter the reporting system.

It is expected that this trend will continue for the next several years or until the regulations on striped bass are eased somewhat. Presently, and particularly during the spring and fall, many fishermen are unable to fish because of the large numbers of striped bass. Too much time and money is spent on discarding non-legal striped bass from their nets to warrant a continued fishing effort for other species.

Age Composition

The age frequencies of river herring (sexes pooled) and American shad determined from the 1986 samples of commercial catches in pound nets in the James, York, and Rappahannock River fisheries are presented in Tables 1.10-1.14. The 1981 year class (age 5) of alewife was the modal age group in the York River in both 1985 (Loesch et al. 1985) and 1986 (Table 1.10). In

1985, the 29.5% and 31.2% representations of the 1982 year class in the York and Rappahannock catches (Loesch et al. 1985) exceeded the highest occurrence of age 3 alewives previously reported (Hoagman and Kriete 1975). Although the 1982 year class was the modal group in the Rappahannock River in 1986 (Table 1.12), the anticipated strong representation in the York River did not occur (Table 1.10).

The blueback herring had older modal groups than the alewife in 1984, 1985, and 1986. The modal age of alewives was age 4 with but one exception (age 5 in 1986 in the Rappahannock River) while the modal age for blueback herring was either 5 or 6. The older modal age for blueback herring relative to the alewife reflects the somewhat later maturation of blueback herring (PSEG 1982, 1984). Modality is also readily affected by the presence of a strong year class or by recruitment failure.

As in past years, American shad data reflect gill-net selectivity for large females (Table 1.14). Since females are larger at age than males, the female age structure is older.

The river herring age composition data were used in conjunction with sex ratio and mean weight-at-age data to estimate year-class contributions to the total landings.

Length and Weight Analysis

Mean values for fork length and total body weight for river herring, derived from samples of the pound net catches in the York and Rappahannock rivers, are presented in Table 1.15. Similar data for American shad, derived from samples of gill net catches in the James, York, and Rappahannock rivers, are presented in Table 1.16.

As stated above, river herring mean weight-at-age data were used in conjunction with age composition and sex ratio data to estimate year-class contributions to the annual landings.

Species Composition

Alewife constituted 26.5% of the river herring sampled in the York and Rappahannock rivers in 1986 (Table 1.1), but were only 24.2% of the total landings in these two rivers (Table 1.6). The difference occurs each year because the samples are a constant weight (22.7 kg) rather than a constant proportion of the catch. Alewife are the major proportion of the river herring samples only in periods when landings are low (March and early April). The proportion of blueback herring in the samples is superior when landings are much greater. Thus, the proportion of alewife in our total sample is enhanced relative to the actual contribution to the biomass of river herring landed. Each estimate of species percentages was therefore weighted by landings in the sampling period in 1984, 1985, and 1986. The weighted estimates were then summed throughout the season to obtain the contribution of each species to the total biomass landed.

Sex Ratios

The sex ratio data (Table 1.1) were used in conjunction with species age structure and mean weight-at-age data to estimate year-class contributions to the total landings.

Mortality Estimates

Estimates of instantaneous total mortality rates (Z) were not made in 1986. In 1984, estimates of Z were made for the 1969-1977 year classes in

the Rappahannock River (Loesch and Kriete, 1984). Using an assumed instantaneous natural rate ($M=1.1$), annual rates of mortality (A), survival (S), and exploitation (E) were also made. With the additional 1985 data, Z, A, S and E values were calculated for the 1978 alewife year class (Loesch et al. 1985). The Z for the 1978 blueback herring year class, however, was anomalously low, and, therefore, omitted from the long-term average.

The mean estimate of total mortality (Z) was 1.47 for alewife and 1.61 for blueback herring (Table 1.17), thus, the estimates of the mean annual mortality rates (\bar{A}) were 77% and 80% and the mean exploitation rates (\bar{E}) were 31% and 40%, respectively (Table 1.17).

The range in annual mortality rates for alewife (70% to 87%) and blueback herring (67% to 89%) in Virginia are similar to alewife mortality rates in New England; which range from 73% to 95% (DiCarlo 1981; Walton 1981). Although the New England river herring stocks did not exhibit a decline with heavy fishing pressure for some years, the stocks in Maine recently had a sharp decline in abundance.

Job 2. Annual Index of Juvenile Alosa Abundance

INTRODUCTION

The VIMS annual study of juvenile migratory Alosa was continued in 1986. The intent of the study was to estimate relative abundance, growth, and mortality. Long-term objectives are to assess any relationship between the annual index of abundance and future recruitment, and to determine if there is a periodicity of strong year classes.

MATERIALS AND METHODS

Indices of juvenile Alosa abundance were estimated by sampling in their nursery zones (tidal freshwater) in the Mattaponi and Pamunkey rivers. The nursery zone in the Mattaponi River was sampled seven times between 2 June and 14 July 1986 and the Pamunkey River was sampled five times between 3 June and 2 July 1986.

Loesch and Kriete (1983) established a standardized sampling unit and a minimum size limit for catch-effort considerations, and detailed the stratified sampling plan employed. A bow-mounted 1.5 m x 1.5 m pushnet (Kriete and Loesch 1980) was used to capture the juveniles (young-of-the-year). Because juvenile Alosa, or their prey, exhibit negative phototropic responses (Loesch et al. 1982), samples were collected at night to minimize the effects of varying intensities of incident light.

A weighted overall mean CPUE, where stations were replicates per stratum, was calculated for each sampling period. The largest of these CPUE values was defined as the index of abundance, and is referred to as the

maximal CPUE. The advantages of a maximal CPUE vis-à-vis a seasonal mean CPUE were also discussed by Loesch and Kriete (1983). Sampling was conducted weekly to enhance the accuracy of the estimate of maximal relative abundance. Turner and Chadwick (1972) reported serious deficiencies in their annual index of juvenile striped bass when the index was developed from catch data collected at two-week intervals.

Estimates of mean CPUE that followed the maximal CPUE, but clearly preceded the onset of the seaward migration, were used in conjunction with the maximal value to estimate the instantaneous natural mortality rate (M). The \log_e of the ratio of maximal CPUE to a subsequent CPUE was used to calculate M when there was only one usable CPUE subsequent to the maximal value. Division by the number of days elapsed from the maximal CPUE (day 1) to the subsequent CPUE gave the daily instantaneous rate of natural mortality (M_d). With two or more usable CPUE values following the maximal CPUE, catch curves (Ricker 1975) were used to derive M_d .

Increases in mean fork length were used to calculate juvenile Alosa growth. All juveniles in samples of size $N \leq 50$ were measured; for $N > 50$, a random subsample of 50 fish was taken.

RESULTS AND DISCUSSION

Index of Abundance

Maximal CPUE values for alewife, blueback herring, and American shad in the Mattaponi and Pamunkey rivers are given in Table 2.1. The maximal CPUE for alewives, American shad and blueback herring in the Mattaponi and Pamunkey rivers in 1986 occurred on June 2 and 3, June 9 and 11, and June 23 and 17, respectively, for species and rivers. The later dates of maximal

CPUE for blueback herring are an annual occurrence and reflect their later spawning relative to alewives and American shad.

In the years 1979 to 1986, the relative index values of blueback herring exceeded the values for American shad and alewife in the Pamunkey River (Table 2.1). The blueback herring index values also exceeded the values for the alewife in the Mattaponi River (with one exception), and exceeded the values for the American shad in five of the eight years.

Although commercial landings indicate that blueback herring are more numerous than alewife and American shad, the maximal CPUE values for juveniles cannot be contrasted among species because of differences in availability. Loesch et al. (1982) found that although both species exhibited a diel periodicity, blueback herring remain higher in the water column than do alewives. Thus, the juvenile blueback herring are more susceptible to capture by surface gear than are alewives. The vertical density distribution of juvenile American shad, relative to the other alosids is unknown.

Most often the maximal CPUE for alewives and American shad was greater in the Mattaponi River than in the Pamunkey River (Table 2.1). In contrast, the relative abundance of blueback herring was most often larger in the Pamunkey River. It is not known why these differences occur.

The data base of juvenile indices of abundance and the subsequent contributions of year classes to the fisheries are not large enough for a thorough analysis of spawner-recruit relationships.

Growth

Loesch and Kriete (1983) discussed in detail the problems of estimating juvenile alosid growth from observed mean lengths. Briefly, two major

sources of error that result in an underestimation of growth are the tendency for the precocious juveniles to migrate downstream (Loesch 1969, Marcy 1976), and protracted recruitment due to a lengthy spawning period. These two aspects of alosid behavior result in apparent periods of little or no growth or even "negative growth."

The principal use of juvenile length data herein and in previous segments of the study is to note salient changes in the growth rate. In conjunction with apparent changes in the slope of the catch curves, the observed changes in the growth rate aid in the selection of CPUE values for the estimation of juvenile mortality.

Natural Mortality

Estimates of daily instantaneous natural mortality rates (M_d) have been made since 1979 (Table 2.2). Because of three-week intervals between sampling, the 1980 and 1981 values are not considered reliable (Loesch and Kriete 1983).

The data (Table 2.2) indicate that the rates of mortality tended to be higher in the Pamunkey River. Of the 18 estimates of M_d (1980 and 1981 data excluded), the M_d values in the Mattaponi River exceed those in the Pamunkey River only four times. The reason(s) for the general occurrence of higher juvenile mortality rates in the Pamunkey River relative to the rates in the Mattaponi River is not known. It does not appear to be density related since the larger catches and larger maximal CPUE values for alewives and American shad most often occur in the Mattaponi River.

Job 3. Analysis of American Shad Growth: Circa 1970 versus Circa 1980

INTRODUCTION

Growth of American shad, Alosa sapidissima, has been described by Leim (1924), La Pointe (1958), Cating (1953) and Judy (1961). Leim (1924) established that growth in American shad scale radii was proportional to the growth in fish length. Fish growth can be affected by many factors, one of which is population density (Everhart and Youngs 1981). Density of American shad in the James and York rivers of Virginia was high during the era 1968 through 1972, relative to the last decade. Conversely, low population densities were reported during the era 1979 through 1983 (Loesch and Kriete 1983). Although decreases in effort may have resulted in reduced landings, it appears that these changes in effort were not large enough to explain the drastic decline in landings over the past decade (Richkus and DiNardo 1984).

The objective herein was to assess the possible existence of density dependent growth of American Shad.

MATERIALS AND METHODS

Samples of American shad were collected in March, April and May from the fisheries of the James and York rivers during the periods of 1968-1972 and 1979-1983. A total of 753 shad were aged from the high population density period of 1968-1972, and 497 from the low density period of 1979-1983. Only those scales judged to be of good quality were used. Samples were obtained from stake gill nets, the dominant gear used in the American shad fishery: landings from other gear types are negligible, particularly

when population densities are low. The American shad fishery primarily employs stake gill nets with 12.4 to 14.0 cm stretched mesh. These mesh sizes select for the larger, economically more important females. Consequently, this study used data obtained from females only.

Scales were removed from each fish and fork length (mm) and weight (g) were recorded. The scales were mounted and pressed onto acetate sheets using a method similar to Merriman's (1941). Age was determined by Cating's (1953) method, i.e., counting the number of annuli and adding a year for the scale edge. Each specimen's collection number, fork length and age were entered into a microcomputer. The distance from the focus to each successive annulus was then established through the use of a sonic digitizer, and entered into the computer (Loesch and Kriete 1983). All of these data were subsequently transferred into a Prime 850 computer system.

For the purpose of enhancing replications at age, analysis of covariance was used to determine the validity of pooling the James and York River scale-radius-body length data within each era. Also, because of the "art-science" element of scale reading, a conservative level of significance ($\alpha = 0.01$) was chosen. Estimated lengths-at-age were calculated using version 6.1 of DisBcal (Frie, 1982). These estimated lengths-at-age were then run in a non-linear least squares program using the Von Bertalanffy growth function fitted to the calculated lengths-at-age. A t-test (SPSS) was then employed to determine if there were significant differences in eras for mean length-at-age for ages 1-9.

RESULTS AND DISCUSSION

An analysis of covariance resulted in non-significant differences ($P > 0.02$ for the 1968-72 era and $P > 0.90$ for the 1979-1983 era) with $\alpha = 0.01$. Following this test, the data were pooled within each era.

Back calculated lengths-at-age proved to be less than the mean observed lengths-at-age for both eras with the exception of age 9 in the 1979-1983 era. (Tables 3.1, 3.2, 3.3 and 3.4). Both the observed mean lengths-at-age and the estimated mean lengths-at-age were larger in the 1968-1972 high population density era relative to the low density era.

Estimates of the Von Bertalanffy growth function fitted to the calculated lengths-at-age yielded $L(t) = 533.9 [1 - \exp(-0.2579(t + 1.6653))]$ for 1968-1972 and $L(t) = 524.0 [1 - \exp(-0.2126(t + 2.7274))]$ for 1979-1983 where $L(t)$ is in mm and t is in years.

Results of t-tests of between-era length-at-age gave strong evidence for significant differences in mean length ($P < 0.001$) at all ages except age 9 ($P = 0.16$). This could be explained by the small sample size of 13 at this age.

It is generally accepted that, during times of high population density, growth of fish is slowed; and, during times of low population density, growth rate increases (Wilson et al. 1975; McFadden 1977). The results of the present data analyses suggest the contrary. Fish from the 1968-1972 high population density era demonstrated a faster growth rate than those from the low population density era.

Everhart and Youngs (1981) stated that factors influencing growth of fish are: the amount and size of food available; the number of fish using the same food resource; temperature, oxygen, and other water quality

factors; and the size, age, and sexual maturity of the fish. There are many factors which can be attributed to the decline of population density of shad. Construction of dams reduced the amount of available spawning grounds in the 1800's. Prior to the building of the dams, American shad migrated 291 nautical miles up the James River. They are now limited to 91 nautical miles due to the existence of Boshers Dam (Atran et al. 1982). Recent declines may have resulted from man's encroachment on what is left of the spawning grounds. Contamination of these areas may be detrimental to growth and survival of American shad. Loesch et al. (1982) reported kepone in juvenile American shad and blueback herring in the Mattaponi River. A factor such as contamination could explain both a reduction in population density and in individual growth of the fish. In the Connecticut River, high river flows in June are strongly correlated with poor year-class recruitment (V.A. Crecco, Connecticut Department of Environmental Protection: personal communication). Thus, the present American shad growth data should be analyzed in conjunction with chemical and physical parameters of the river systems.

LITERATURE CITED

- Atran, S. M., J. G. Loesch, and W. H. Kriete, Jr. 1982. An overview of the status of Alosa stocks in Virginia. Marine Resources Report No. 82-10. Virginia Institute of Marine Science, School of Marine Science, College of William and Mary, Gloucester Point, Virginia, 52 p.
- Cating, J. P. 1953. Determining age of Atlantic shad from their scales. U.S. Fish and Wildl. Serv. Fish. Bull. 54(85):187-199.
- DiCarlo, J. S. 1981. Overview of alosid stocks of Massachusetts. Dept. Fish. Wildl. and Recreational Vehicles. Boston, MA.
- Everhart, W. H. and W. D. Youngs. 1981. Principles of Fishery Science. Cornell University Press, Ithaca and London, pp. 61-87.
- Frie, R. V. 1982. Measurement of fish scales and back-calculation of body lengths using a digitizing pad and microcomputer. Fisheries 7(5):5-8.
- Hoagman, W. J. and W. H. Kriete, Jr. 1975. Biology and management of river herring and shad in Virginia. Annu. Rep. 1975. Nat. Mar. Fish Serv. Proj. No., AFC 8-2. Virginia Institute of Marine Science, Gloucester Point, Virginia. 105 p.
- Judy, M. H. 1961. Validity of age determination from scales of marked American shad. U.S. Fish and Wildl. Serv. Fish. Bull. 61(185):161-170.
- Kriete, W. H., Jr. and J. G. Loesch. 1980. Design and relative efficiency of a bow-mounted pushnet for sampling juvenile pelagic fishes. Trans. Amer. Fish. Soc. 109:649-652.
- La Pointe, D. F. 1958. Age and growth of the American shad, from three Atlantic coast rivers. Trans. Amer. Fish. Soc. Vol. 87(1957), pp. 139-150.

- Leim, A. H. 1924. The life history of the shad Alosa sapidissima (Wilson), with special reference to the factors limiting its abundance. Contrib. Can. Biol. N.S. 2(11)161-284.
- Loesch, J. G. 1969. A study of the blueback herring, Alosa aestivalis (Mitchill), in Connecticut waters. Ph.D. Dissertation. University of Connecticut, Storrs, Connecticut, USA.
- Loesch, J. G. and W. H. Kriete, Jr. 1983. Anadromous fisheries research, Virginia. Comp. Rep. AFC 10-1 to 10-4. Virginia Institute of Marine Science, Gloucester Point, Virginia. 56 p.
- Loesch, J. G. and W. H. Kriete, Jr. 1984. Study of Alosa stock composition and year-class strength in Virginia. Annu. Rep. 1984. Nat. Mar. Fish. Serv. Proj. No. AFC 3-1. Virginia Institute of Marine Science, Gloucester Point, Virginia. 39 p.
- Loesch, J. G., W. H. Kriete, Jr. and E. J. Foell. 1982. Effects of light intensity on the catchability of juvenile anadromous Alosa species. Trans. Amer. Fish. Soc. 111 (1):41-44.
- Loesch, J. G., W. H. Kriete, Jr. and R. P. Trapani. 1985. Study of Alosa stock composition and year-class strength in Virginia. Annu. Rep. 1985. Nat. Mar. Fish. Serv. Proj. No. AFC 3-2. Virginia Institute of Marine Science, Gloucester Point, Virginia. 42 p.
- Marcy, B. C., Jr. 1976. Early life history studies of American shad in the lower Connecticut River and the effects of the Connecticut Yankee Plant. Pages 141-168 in D. Merriman and L. M. Thorpe (eds.), The Connecticut River Ecological Study; the Impact of a Nuclear Power Plant. Amer. Fish. Soc. Monogr. No. 1.

- McFadden, J. T. 1977. An argument supporting the reality of compensation in fish populations and a plea to let them exercise it. Pages 153-183. in W. Van Winkle, (ed.) Proceedings of the conference on assessing the effects of power-plant induced mortality on fish populations. Pergamon, New York, NY.
- Merriman, D. 1941. Studies on the striped bass, (Roccus saxatilis) of the Atlantic coast. Fish. Bull. U.S. Fish and Wildl. Serv. 50(35):1-77.
- Nie, N. H., C. H. Hull, J. G. Jenkins, K. Steinbrenner, and D. H. Bent. 1975. Statistical package for the social sciences. McGraw-Hill Book Co., New York. 675 p.
- PSEG (Public Service Electric and Gas Company) 1982. Blueback herring (Alosa aestivalis): a synthesis of information on natural history, with reference to occurrence in the Delaware River and estuary and involvement with Salem nuclear generating station. Salem Nuclear Generating Station 316 (b) Appendix VI, Newark, New Jersey, USA.
- PSEG (Public Service Electric and Gas Company) 1984. Alewife (Alosa pseudoharengus): a synthesis of information on natural history, with reference to occurrence in the Delaware River and estuary and involvement with Salem nuclear generating station. Salem Nuclear Generating Station 316 (b) Appendix V, Newark, New Jersey, USA.
- Richkus, W. A. and G. DiNardo. 1984. Current status and biological characteristics of the anadromous alosid stocks of the Eastern United States: American shad, hickory shad, alewife, and blueback herring. Atlantic States Marine Fisheries Commission, Fisheries Management Report 4, Washington, DC. xix + 225 pp.
- Ricker, W. E. 1975. Computations and interpretations of biological statistics of fish populations. Fish. Res. Bd. Can. Bull. 919. 382 p.

- Turner, J. L. and H. K. Chadwick. 1972. Distribution and abundance of young-of-the-year striped bass, Morone saxatilis, in relation to river flow in the Sacramento-San Joaquin Estuary. Trans. Amer. Fish. Soc. 101(3):442-452.
- Walton, C. J. 1981. Population biology and management of the alewife (Alosa pseudoharengus) in Maine. AFC-21-2. Dept. Sea Shore Fish., Augusta, Maine.
- Wilson, E. O., T. Eisner, W. R. Briggs, R. E. Dickerson, R. L. Metzenberg, R. D. O'Brien, M. Susman, and W. E. Boggs. 1975. Life on Earth. Sinauer Associates, Inc. Sunderland, Massachusetts. 888 p.

Table 1.1. Summary of sample data from the Alosa commercial fisheries during the 1986 spawning run in the major Virginia tributaries to Chesapeake Bay.

River and Month	Alewife		Blueback		American Shad	
	Male	Female	Male	Female	Male	Female
<u>York</u>						
March	12	9	121	86	2	
April	21	31	160	269	13	187
May	3	0	105	140		
<u>Rappahannock</u>						
March	95	92	2	1		
April	95	109	147	127	9	59
May	24	16	144	102		
Totals (M&F)	507		1,404		270	

Table 1.2. Number of active pound net stands in Chesapeake Bay and its Virginia tributaries during January-June, 1986.

Area	Jan		Feb		Mar		April		May		June	
	9	24	12	20	3	23	7	27	11	24*, 25	25	
A. James River	0	0	0	0	0	0	0	0	0	0	0	0
B. Back River	0	0	0	0	1	1	1	2	2	2	2	2
C. Poquoson River	0	0	0	0	0	0	0	0	0	0	0	0
D. York River	0	0	1	1	5	8	10	11	10	11	10	11
E. Mobjack Bay	0	0	0	0	2	5	5	5	5	5	5	2
F. Piankatank River	0	0	1	1	1	1	1	1	1	1	1	1
G. Rappahannock River	0	0	4	10	24	29	31	31	26	22	26	22
H. Great Wicomico River	0	0	0	0	0	0	0	0	0	0	0	0
I. Potomac River	0	0	4	12	32	47	61	62	61	62	61	62
a. Virginia tributaries to Potomac River	0	0	1	2	3	3	3	3	3	3	3	2
J. Cape Henry-Fort Wool	0	0	0	1	3	4	5	5	5	5	5	5
K. Old Point-Tue Marsh Point	0	0	0	0	2	2	3	4	4	4	4	4
L. York Spit	0	0	0	0	1	7	5	6	6	6	6	7
M. New Point-Stingray Point	0	2	5	6	8	10	15	17	16	16	16	16
N. Windmill Point-Smith Point	1	1	1	2	6	12	13	13	14	13	14	13
<u>Eastern Shore</u>												
O. Above Hungar Creek	0	0	0	0	1	3	3	3	4	4	4	4
P. Below Hungar Creek	<u>5</u>	<u>0</u>	<u>0</u>	<u>7</u>	<u>9</u>	<u>9</u>	<u>15</u>	<u>16</u>	<u>19</u>	<u>22</u>	<u>19</u>	<u>22</u>
TOTAL	6	3	17	42	98	141	171	179	176	173	176	173

*Dense haze and threatening thunderstorms caused the cancellation of flight. Count was completed on 25 June.

Table 1.3. Number of stake gill net stands fished in Virginia rivers 1984-1986 (A) and linear meters of gill netting fished primarily for American shad per 5-mile block (B) in 1986. Figures in parentheses represent the total meters of gill netting in the James, York and Rappahannock rivers.

A. River		Number of Gill Net Stands		
		1984	1985	1986
James		107	109	88
York		121	124	132
Rappahannock		37	27	8

B. River	Mile	Number of Stands	Number of Sections	Average Length/Section	Meters of Net	
James	05-10	28	826	9.1	(7,517)	7,465
	10-15	-	-	-	(-)	-
	15-20	31	495	9.1	(4,505)	2,253
	20-25	22	339	12	(4,068)	2,034
	25-45	13	178	12	(2,136)	216
	Total	94	1,838		(18,226)	11,968
York	05-10	2	22	14.2	(312)	197
	10-15	42(a)	762	14.2	(10,820)	6,817
	15-20	29(a)	427	14.2	(6,063)	3,820
	20-25	15(a)	285	7.6	(2,166)	2,049
	25-30	44(a)	754	7.6	(5,730)	5,420
	Total	132	2,250		(25,091)	18,303
Rappahannock	25-30	3	29	15.7	(455)	235
	30-35	5	107	15.7	(1,680)	867
	Total	8	136		(2,135)	1,102

(a) Adjusted for stands set but not fished.

Table 1.4. Yearly catch-per-unit-of-effort for American shad in stake gill nets and river herring in pound nets for the years 1975-1986. Stake gill net effort is in meters of netting. Pound net effort is in number of nets per season.

	Stake Gill Net			Pound Net	
	Effort	American Shad		Effort	River Herring
		M	F		
James River					
1975	25,832	2.7	8.8	(a)	
1976	20,464	1.9	25.1		
1977	26,884	0.4	6.9		
1978	28,134	4.1	20.4		
1979	37,207	0.5	7.1		
1980	41,739	1.4	8.2		
1981	38,250	0.3	2.8		
1982	15,088	1.4	2.5		
1983	18,485	2.5	7.9		
1984	16,911	2.1	10.0		
1985	23,143	0.7	3.1		
1986	11,968	1.0	1.4		
York River					
1975	22,106	0.5	4.5	(a)	
1976	21,424	0.3	3.0		
1977	19,326	0.2	7.1		
1978	15,954	2.0	10.9		
1979	13,968	1.7	13.3		
1980	19,940	1.3	12.4		
1981	21,298	1.1	7.5		
1982	28,262	0.8	4.8		
1983	30,404	1.5	5.5		
1984	23,515	2.5	8.4		
1985	25,595	1.2	4.7		
1986	18,303	1.8	4.0		
Rappahannock River					
1975	28,973	0.1	0.8	50.67	4,819
1976	32,517	0.1	0.5	35.09	3,185
1977	13,595	0.2	1.6	32.01	6,534
1978	13,681	0.8	3.4	27.28	18,788
1979	13,497	0.2	1.6	34.93	13,732
1980	8,758	0.2	1.0	28.00	7,808
1981	11,591	0.2	0.9	45.53	7,066
1982	6,736	0.4	0.8	32.44	12,811
1983	6,836	0.3	0.7	34.80	11,981
1984	5,742	0.9	2.3	34.26	15,401
1985	4,453	0.7	1.4	15.24	13,241
1986	1,102	0.8	1.8	24.11	3,406

(a) Data not available.

Table 1.5. Estimated catch in kg of American shad by stake gill nets for 5-mile sections in the James River 1986 by half-month intervals and by sex. Effort from Table 1.3. Index in kg/m of net.

Half-Month Period	River Mile	American Shad				Total Estimated Catch
		Male		Female		
		Index	Estimated Catch	Index	Estimated Catch	
February 2nd	05-10	0.1481	1,106	0		1,106
	10-15					
	15-20					
	20-25	0		0		
	25-60					
			1,106		0	1,106
March 1st	05-10	0.5113	3,817	0.5398	4,030	7,847
	10-15					
	15-20		104		110	214
	20-25	0.0461	94	0.0490	100	194
	25-60		10		11	21
	Total		4,025		4,251	8,276
March 2nd	05-10	0.6843	5,108	0.9825	7,334	12,442
	10-15					
	15-20		255		417	672
	20-25	0.1132	230	0.1852	377	607
	25-60		24		40	64
	Total		5,617		8,168	13,785
April 1st	05-10	0.1171	874	0.6465	4,826	5,700
	10-15					
	15-20		75		366	441
	20-25	0.0332	68	0.1625	331	399
	25-60		7		35	42
	Total		1,024		5,558	6,582
	Total		11,772		17,977	
	Grand Total					29,749

Table 1.6. Yearly landings in kg of American shad by pound nets and stake gill nets, and river herring by pound nets. Landings for the James, York and Rappahannock rivers are estimations.

	Stake Gill Net		Pound Net			
	American Shad		American Shad		River Herring	
	M	F	M	F	Alewife	Blueback
James						
1977	11,612	186,495	(a)			
1978	116,348	574,935				
1979	17,328	263,203				
1980	59,003	343,026				
1981	12,056	105,550				
1982	21,811	37,731				
1983	46,822	146,715				
1984	35,531	169,990				
1985	16,922	71,232				
1986	11,772	17,977				
York						
1977	3,376	137,748	8,894	3,217	10,298	87,966
1978	31,666	174,780	16,676	13,141	16,021	135,954
1979	23,460	186,074	5,492	10,224	22,256	195,150
1980	25,012	246,719	2,267	6,453	43,391	176,955
1981	23,453	158,905	2,361	630	5,454	189,769
1982	23,811	134,676	5,236	179	15,499	197,621
1983	45,717	167,590	2,780	2,157	2,714	40,979
1984	58,104	196,550	2,469	1,056	4,131	40,066
1985	36,786	120,951	1,336	645	5,175	14,850
1986	32,886	72,542	(a)			
Rappahannock						
1977	2,298	22,053	2,949	1,268	84,688	209,163
1978	10,909	45,870	2,096	1,871	130,804	381,734
1979	2,199	21,619	2,046	1,562	56,016	423,633
1980	1,366	8,831	614	1,038	23,283	195,354
1981	2,621	10,015	824	832	33,767	287,963
1982	2,616	5,256	2,395	1,487	87,689	327,893
1983	2,113	4,969	1,629	747	103,066	313,873
1984	5,043	12,949	2,225	936	113,787	413,839
1985	3,284	6,152	602	248	49,104	152,696
1986	888	1,958	382	191	21,860	60,284

(a) Data not available.

Table 1.7. Estimated catch in kg of American shad by stake gill nets for 5-mile sections in the York River 1986 by half-month intervals. Effort from Table 1.3. Index in kg/m of net.

Half-Month Period	River Mile	American Shad				Total Estimated Catch
		Male		Female		
		Index	Estimated Catch	Index	Estimated Total	
February 2	05-10		16		10	26
	10-15	0.0799	545	0.0503	343	888
	15-20		305		192	497
	20-25	(a)		(a)		
	25-30					
	Total		866		545	1,411
March 1st	05-10		96		47	143
	10-15	0.4892	3,335	0.2401	1,637	4,972
	15-20		1,869		917	2,786
	20-25	0.5562	1,140	0.3496	716	1,856
	25-30		3,015		1,895	4,910
	Total		9,455		5,212	14,667
March 2nd	05-10		142		259	401
	10-15	0.7224	4,925	1.3139	8,957	13,882
	15-20		2,760		5,019	7,779
	20-25	0.7881	1,615	1.6932	3,469	5,084
	25-30		4,272		9,177	13,449
	Total		13,714		26,881	40,595
April 1st	05-10		17		217	234
	10-15	0.0866	590	1.1015	7,509	8,099
	15-20		331		4,208	4,539
	20-25	0.4178	856	1.0581	2,168	3,024
	25-30		2,264		5,735	7,999
	Total		4,058		19,837	23,895
April 2nd	05-10		13		117	130
	10-15	0.0645	440	0.5922	4,037	4,477
	15-20		246		2,262	2,508
	20-25	0.5482	1,123	1.8277	3,745	4,868
	25-30		2,971		9,906	12,877
	Total		4,793		20,067	24,860
Total			32,886		72,542	
Grand Total						105,428

(a) none reported by index fishermen.

Table 1.8. Estimated catch in kg of American shad and river herring by pound nets in the Rappahannock River 1986 by half-month intervals. Number of index nets has been rounded to the nearest whole value.

Half Month Period	Mile	Number Nets	American Shad				River Herring				Number of Index Nets		
			Male		Female		Alewife		Blueback				
			Index	Estimated Total	Index	Estimated Total	Index	Estimated Total	% Total	% Total			
March 2nd	31-70	7	3.7	26	2.1	15	670	4,690	98.4	4,615	1.6	75	4
April 1st	31-70	17	2.2	37	5.7	97	145	2,465	63.8	1,573	36.2	892	8
April 2nd	31-70	20	0.11	2	2.1	42	79	1,580	23	363	77	1,217	9
May 1st	31-70	21	8.5	179	(a)		73	1,533	14	215	86	1,318	9
May 2nd	31-70	20	1.3	<u>26</u>	(a)		(a)						9
Total				<u>270</u>		<u>154</u>				<u>6,766</u>		<u>3,502</u>	
Grand Total					424						10,268		
Estimated landings mile 0-30				<u>112</u>		<u>37</u>				<u>15,094</u>		<u>56,782</u>	
					149						71,876		
Grand Total for Rappahannock River					573						82,144		

(a) None reported by index fishermen.

Table 1.9. Estimated catch in kg of American shad by stake gill nets in the Rappahannock River 1986 by half-month intervals. Effort from Table 1.3. Index in kg/m of net.

Half-Month Period	River Mile	American Shad				Total Estimated Catch
		Male		Female		
		Index	Estimated Catch	Index	Estimated Catch	
March 1st	25-30		27			27
	30-35	0.1155	100	(a)		100
	Total		127			127
March 2nd	25-30		102		201	303
	30-35	0.4327	375	0.8574	743	1,118
	Total		477		944	1,421
April 1st	25-30		28		156	184
	30-35	0.1196	104	0.6646	576	680
	Total		132		732	864
April 2nd	25-30		8		52	60
	30-35	0.0350	30	0.2223	193	223
	Total		38		245	283
May 1st	25-30		24		8	32
	30-35	0.1042	90	0.0335	29	119
	Total		114		37	151
	Total		888		1,958	
	Grand Total					2,846

(a) None reported by index fishermen.

Table 1.10. Year-class frequency of alewife (sexes pooled) in the York River commercial fishery samples, 1986.

Category Level	Code	Absolute Freq	Relative Freq (Pct)	Adjusted Freq (Pct)	Cum Freq (Pct)
	73.	2	2.6	2.8	2.8
	76.	1	1.3	1.4	4.2
	77.	4	5.2	5.6	9.9
	78.	3	3.9	4.2	14.1
	79.	5	6.5	7.0	21.1
	80.	12	15.6	16.9	38.0
	81.	31	40.3	43.7	81.7
	82.	12	15.6	16.9	98.6
	83.	1	1.3	1.4	100.0
	9.*	6	7.8	Missing	100.0
	Total	77	100.0	100.0	

Mean	80.239	Std Err	0.225	Median	80.774
Mode	81.000	Std Dev	1.893	Variance	3.585
Kurtosis	4.774	Skewness	-1.980	Range	10.000
Minimum	73.000	Maximum	83.000		
Valid Cases	71	Missing Cases	6		

*Age Code

9 - missing age data

Table 1.11. Year-class frequency of blueback herring (sexes pooled) in the York River commercial fishery samples, 1986.

Category Level	Code	Absolute Freq	Relative Freq (Pct)	Adjusted Freq (Pct)	Cum Freq (Pct)
	74.	1	0.1	0.3	0.3
	75.	5	0.6	1.6	2.0
	76.	6	0.7	2.0	3.9
	77.	15	1.7	4.9	8.9
	78.	28	3.2	9.2	18.0
	79.	48	5.4	15.7	33.8
	80.	65	7.4	21.3	55.1
	81.	82	9.3	26.9	82.0
	82.	53	6.0	17.4	99.3
	83.	2	0.2	0.7	100.0
	9.*	<u>579</u>	<u>65.5</u>	<u>Missing</u>	100.0
	Total	884	100.0	100.0	

Mean	79.967	Std Err	0.097	Median	80.262
Mode	81.000	Std Dev	1.686	Variance	2.841
Kurtosis	0.541	Skewness	-0.869	Rahge	9.000
Minimum	74.000	Maximum	83.000		

Valid Cases 305 Missing Cases 579

*Age code

9 - Missing age data

Table 1.12. Year-class frequency of alewife (sexes pooled) in the Rappahannock River commercial fishery samples, 1986.

Category Level	Code	Absolute Freq	Relative Freq (Pct)	Adjusted Freq (Pct)	Cum Freq (Pct)
	77.	3	0.7	1.3	1.3
	78.	6	1.4	2.5	3.8
	79.	16	3.7	6.8	10.5
	80.	34	7.8	14.3	24.9
	81.	79	18.2	33.3	58.2
	82.	95	21.9	40.1	98.3
	83.	4	0.9	1.7	100.0
	9.*	<u>197</u>	<u>45.4</u>	<u>Missing</u>	100.0
	Total	434	100.0	100.0	
Mean	81.030	Std Err	0.075	Median	81.253
Mode	82.000	Std Dev	1.148	Variance	1.317
Kurtosis	1.349	Skewness	-1.178	Range	6.000
Minimum	77.000	Maximum	83.000		
Valid Cases	237	Missing Cases	179		

*Age Code

9 - Missing age data

Table 1.13. Year-class frequency of blueback herring (sexes pooled) in the Rappahannock River commercial fishery samples, 1986.

Category Level	Code	Absolute Freq	Relative Freq (Pct)	Adjusted Freq (Pct)	Cum Freq (Pct)
	74.	1	0.2	0.5	0.5
	75.	2	0.4	0.9	1.4
	76.	3	0.6	1.4	2.8
	77.	8	1.5	3.7	6.5
	78.	11	2.1	5.1	11.5
	79.	42	8.0	19.4	30.9
	80.	51	9.7	23.5	54.4
	81.	60	11.4	27.6	82.0
	82.	38	7.2	17.5	99.5
	83.	1	0.2	0.5	100.0
	9.*	<u>308</u>	<u>58.7</u>	<u>Missing</u>	100.0
	Total	525	100.0	100.0	

Mean	80.106	Std Err	0.104	Median	80.314
Mode	81.000	Std Dev	1.537	Variance	2.364
Kurtosis	1.408	Skewness	-0.997	Range	9.000
Minimum	74.000	Maximum	83.000		

Valid Cases 217 Missing Cases 308

*Age code

9 - Missing age data

Table 1.14. Year-class frequency of American shad in the Virginia commercial gill net fishery, 1986.

Sex	Year Class	York	Rappahannock	Total	Frequency (%)
Male	1977	1	1	2	10.53
	1978	3	1	4	21.05
	1979	4	5	9	47.37
	1980	2		2	10.53
	1981	<u>1</u>	<u>1</u>	<u>2</u>	10.53
Total		<u>11</u>	<u>8</u>	<u>19</u>	
Female	1976	2	1	3	2.42
	1977	14	7	21	16.94
	1978	25	16	41	33.06
	1979	19	18	37	29.84
	1980	13	3	16	12.90
	1981	<u>1</u>	<u>5</u>	<u>6</u>	4.84
Total		<u>74</u>	<u>50</u>	<u>124</u>	

Table 1.15. Length (mm) and weight (g) statistics for river herring in the York and Rappahannock rivers, 1986.

Species	Sex		York			Rappahannock		
			N	Mean	Std. Error	N	Mean	Std. Error
Alewife	Male	Length	36	241.2	1.869	212	238.7	0.776
		Weight	36	188.4	5.610	212	195.2	2.356
	Female	Length	40	256.5	2.063	217	251.6	0.834
		Weight	40	221.0	6.761	217	233.7	3.464
Blueback	Male	Length	387	236.6	0.689	293	232.6	0.622
		Weight	387	171.9	1.674	293	158.5	1.799
	Female	Length	492	246.9	0.694	230	243.0	0.866
		Weight	494	196.3	1.950	230	187.8	2.821

Table 1.16. Length (mm) and weight (g) statistics for American shad in the York and Rappahannock gill net fisheries, 1986.

Sex		York			Rappahannock		
		N	Mean	Std. Error	N	Mean	Std. Error
Male	Length	15	409.8	18.794	9	426.7	10.901
	Weight	15	1215.2	115.970	9	1328.9	94.135
Female	Length	187	461.2	1.629	59	464.7	4.063
	Weight	87	1772.2	33.675	59	1857.6	47.460

Table 1.17. Estimated rates of instantaneous total mortality (Z), annual mortality (A), survival (S), and exploitation (E) for alewife and blueback herring in the Rappahannock River. A natural mortality rate of 1.1 was assumed.

Year Class	Alewife				Blueback			
	Z	A	S	E	Z	A	S	E
1969	2.06	0.87	0.13	0.62	2.22	0.89	0.11	0.67
1970	1.38	0.75	0.25	0.24	1.72*	0.82	0.18	0.46
1971	1.21	0.70	0.30	0.10	1.90	0.85	0.15	0.55
1972	1.65*	0.81	0.19	0.42	1.74	0.82	0.18	0.47
1973	3.01* ⁺	-	-	-	1.47	0.77	0.23	0.31
1974	1.32	0.73	0.27	0.20	1.11	0.67	0.33	0.01
1975	1.20*	0.70	0.30	0.10	1.65	0.81	0.19	0.42
1976	1.58	0.79	0.21	0.38	1.31	0.73	0.27	0.19
1977	1.42*	0.76	0.24	0.27	1.72*	0.82	0.18	0.46
1978	1.40	0.75	0.25	0.26	0.59 ⁺	-	-	-
Mean	1.47	0.77	0.23	0.31	1.61	0.80	0.20	0.40

*Z estimated from the \log_e of the ratio of CPUE values at ages 5 and 6. All other Z values were estimated from catch curves (regression of \ln CPUE on age).

⁺The Z value was a statistical outlier, and omitted from the calculations.

Table 2.1. Maximal catch-per-unit-of-effort (CPUE) values for juvenile Alosa in the Mattaponi and Pamunkey rivers, 1979-1986.

Year	Maximal CPUE					
	Mattaponi			Pamunkey		
	Alewife	Blueback	Amer. Shad	Alewife	Blueback	Amer. Shad
1979	6.0	73.0	38.1	6.7	224.8	57.4
1980	2.9*	4.6*	38.8*	3.6	87.9	7.1
1981	10.0*	11.6	18.0*	6.5*	16.7	5.3*
1982	38.0	289.0	21.1	28.3*	408.2	3.0*
1983	36.2	36.1	16.5	4.2	120.7	7.5
1984	28.1	220.8	34.4	7.1*	88.9	2.5
1985	31.3	206.2	35.9	12.6	154.6	15.5
1986	11.5*	20.7	36.6	13.2*	99.3	8.9

*Maximal CPUE occurred in the first sampling period.

Table 2.2. Estimates of instantaneous daily mortality for juvenile Alosa in the Mattaponi (M) and Pamunkey (P) rivers, 1979-1986.

Species	River	1979	1980	1981	1982	1983	1984	1985	1986	Mean*
Alewife	M	0.036	0.330	0.105	0.036	0.038	0.042	0.038	0.036	0.038
	P	0.040	0.041	0.058	0.043	0.068	0.036	0.067	0.050	0.051
American shad	M	0.040	0.056	0.080	0.042	0.030	0.056	0.053	0.080	0.050
	P	0.060	0.080	0.043	0.050	0.078	0.057	0.098	0.050	0.066
Blueback	M	0.034	0.022	(+)	0.077	0.041	0.030	0.035	0.047	0.044
	P	0.040	0.031	0.016	0.046	0.052	0.078	0.055	0.043	0.052

*The 1980 and 1981 data were omitted (see text).

(+)Data were too few for a reasonably objective estimate of mortality.

Table 3.1. Observed mean fork lengths of American shad for 1968-1972 era.

Length at Capture in 1968						
Year Class	Age	N	Average	Maximum	Minimum	Standard Error
1964	4	29	414.38	445.00	384.00	2.654
1963	5	284	438.23	493.00	385.00	1.103
1962	6	323	452.41	510.00	408.00	1.014
1961	7	97	473.21	525.00	420.00	2.122
1960	8	18	494.28	532.00	455.00	4.758
1959	9	2	505.00	530.00	480.00	25.000

Table 3.2. Back-calculated mean lengths-at-age of American shad for 1968-1972 era.

Year Class	Age	N	Back-calculated size-at-age											
			1	2	3	4	5	6	7	8	9			
1967	1	0	0.00											
1966	2	0	0.00	0.00										
1965	3	0	0.00	0.00	0.00									
1964	4	29	253.23	332.21	377.66	414.38								
1963	5	284	258.20	338.15	378.48	410.55	438.23							
1962	6	323	256.65	337.62	374.29	406.78	428.27	452.41						
1961	7	97	260.43	341.41	379.65	411.40	434.14	449.96	473.21					
1960	8	18	263.54	346.59	383.84	417.12	441.51	457.52	469.84	494.28				
1959	9	2	263.53	363.86	401.93	432.39	451.38	464.08	478.29	491.19	505.00			
All Classes			257.77	338.38	376.99	409.41	433.36	452.14	472.77	493.97	505.00			
N			753	753	753	753	753	724	440	117	20	2		

Table 3.3. Observed mean fork lengths of American shad for 1979-1983 era.

Year Class	Age	N	Length at Capture in 1979			Standard Error
			Average	Maximum	Minimum	
1975	4	19	414.89	428.00	395.00	2.344
1974	5	104	435.53	493.00	394.00	1.999
1973	6	163	450.51	500.00	375.00	1.480
1972	7	154	455.45	500.00	408.00	1.509
1971	8	45	462.51	514.00	425.00	3.250
1970	9	11	469.82	520.00	443.00	7.019
1969	10	1	510.00	510.00	510.00	0.000

Table 3.4. Estimated mean lengths-at-age of American shad for 1979-1983 era.

Year Class	Age	N	Back-calculated size-at-age												
			1	2	3	4	5	6	7	8	9	10			
1978	1	0	0.00												
1977	2	0	0.00	0.00											
1976	3	0	0.00	0.00	0.00										
1975	4	19	274.03	338.34	381.53	419.83									
1974	5	104	276.12	338.23	378.88	410.15	437.19								
1973	6	163	278.15	340.48	377.31	405.50	424.73	445.37							
1972	7	154	279.23	341.15	373.06	397.98	416.63	433.19	451.40						
1971	8	45	277.16	339.89	367.79	393.51	411.38	426.96	440.92	458.48					
1970	9	11	282.90	344.70	374.72	396.66	411.25	427.73	440.29	454.82	471.64				
1969	10	1	293.48	363.59	397.25	414.08	442.13	450.54	467.37	475.78	498.22	510.00			
All Classes			277.95	340.22	375.61	403.42	423.30	437.63	448.66	458.07	473.86	510.00			
N			497	497	497	497	497	478	374	211	57	12	1		

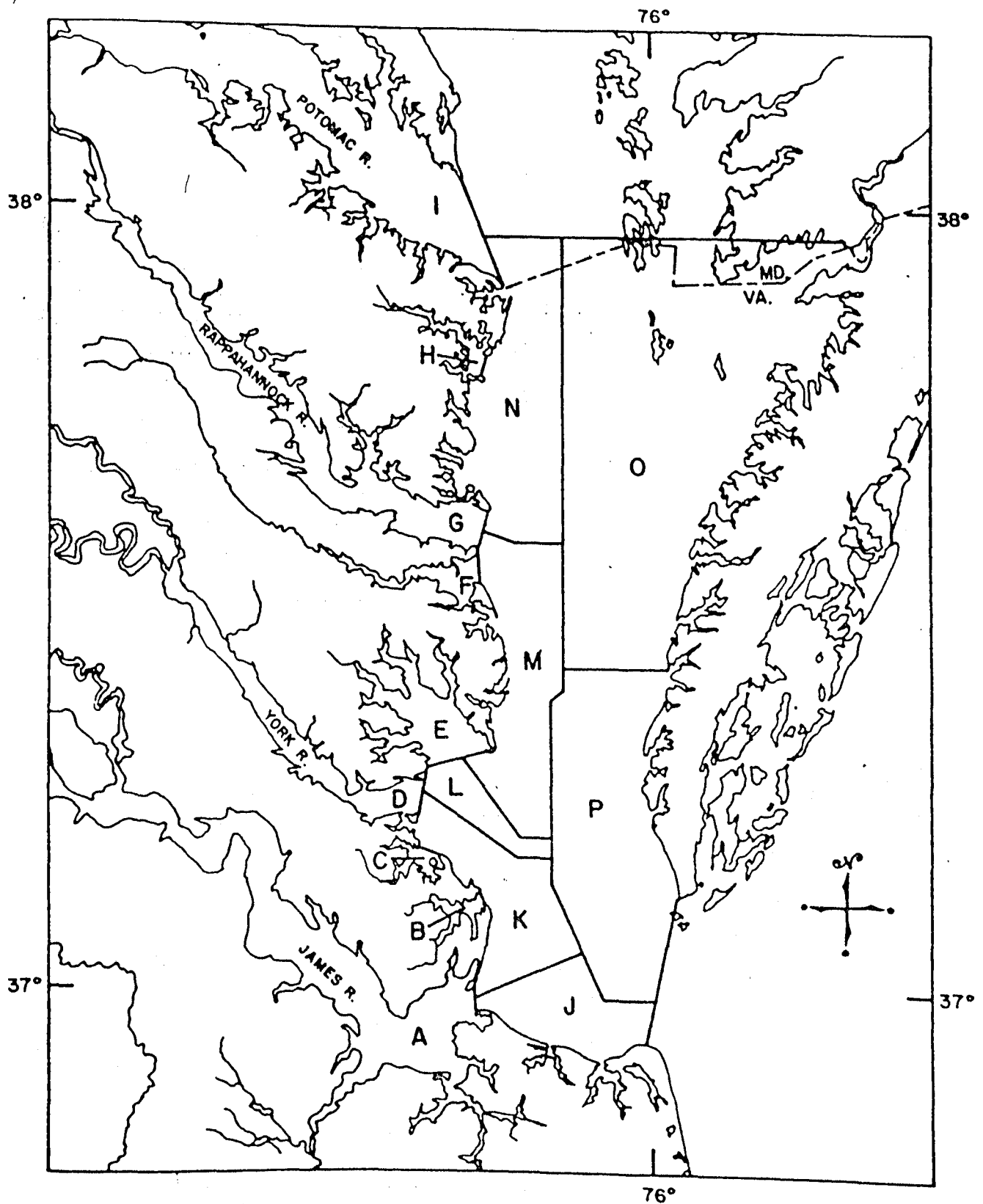
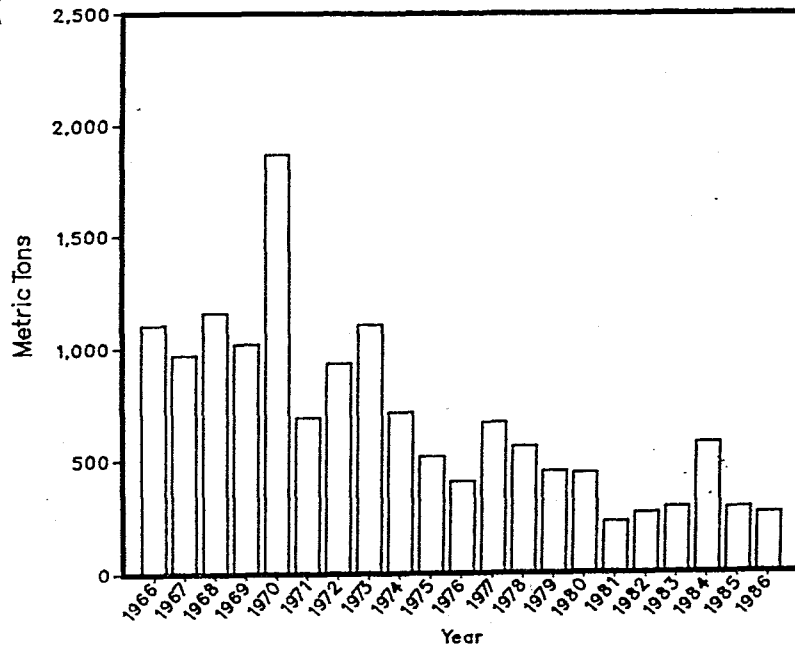


Figure 1.1. Area designations utilized during aerial pound net counts.

Figure 1.2. Virginia Landings 1966–1986.

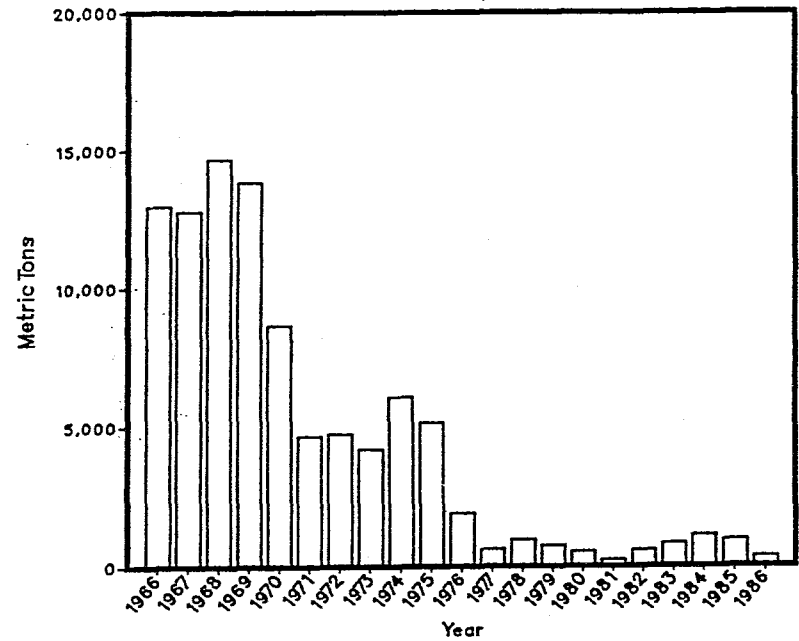
97

American Shad
1966–1986



1 metric ton = 2205 lb.
1986 Data are preliminary

River Herring
1966–1986



1 metric ton = 2205 lb.
1986 Data are preliminary

Figure 2.1. Growth Curves for Juvenile Alewives, 1986

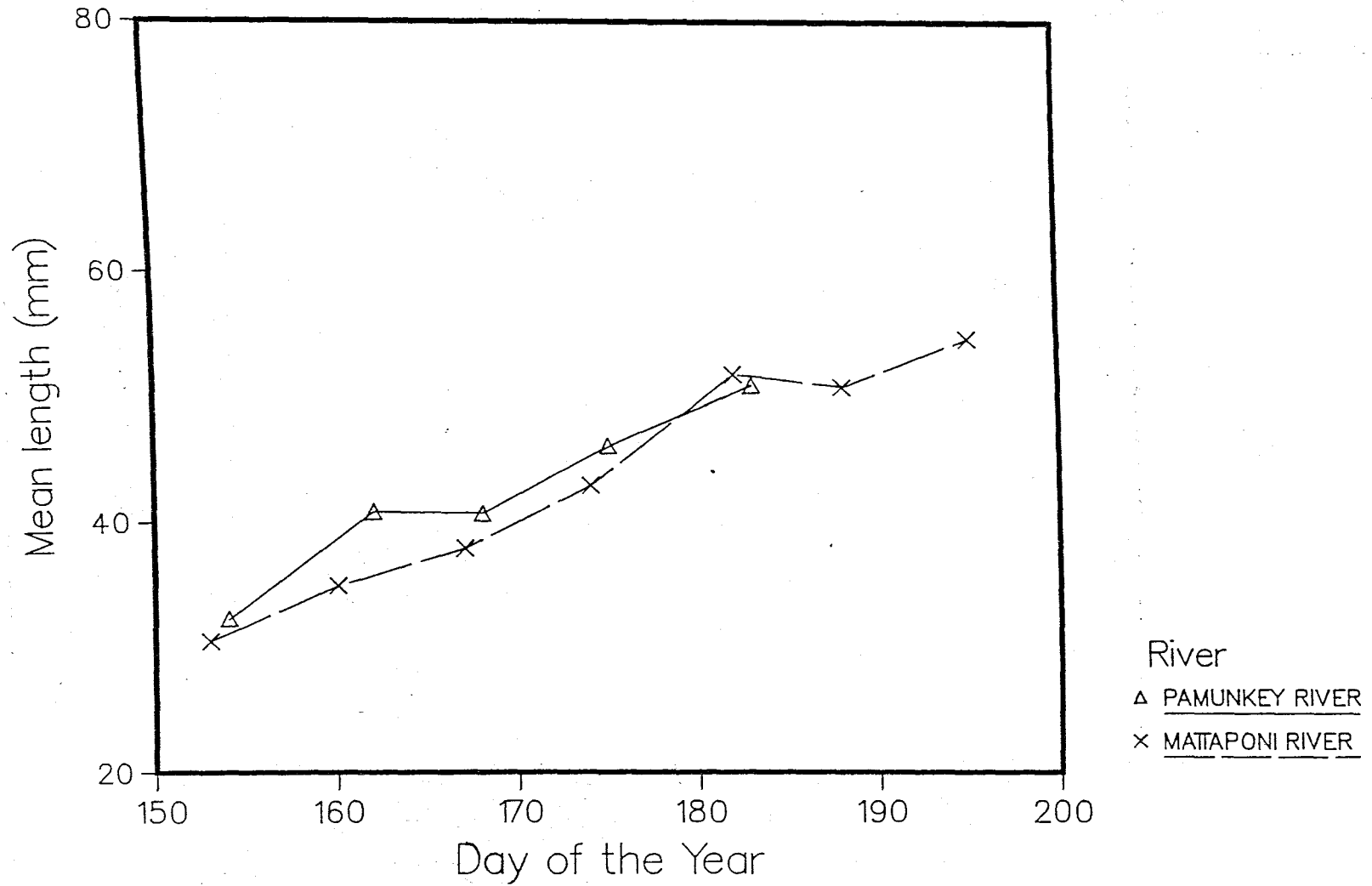


Figure 2.2. Growth Curves for Juvenile Blueback Herring, 1986

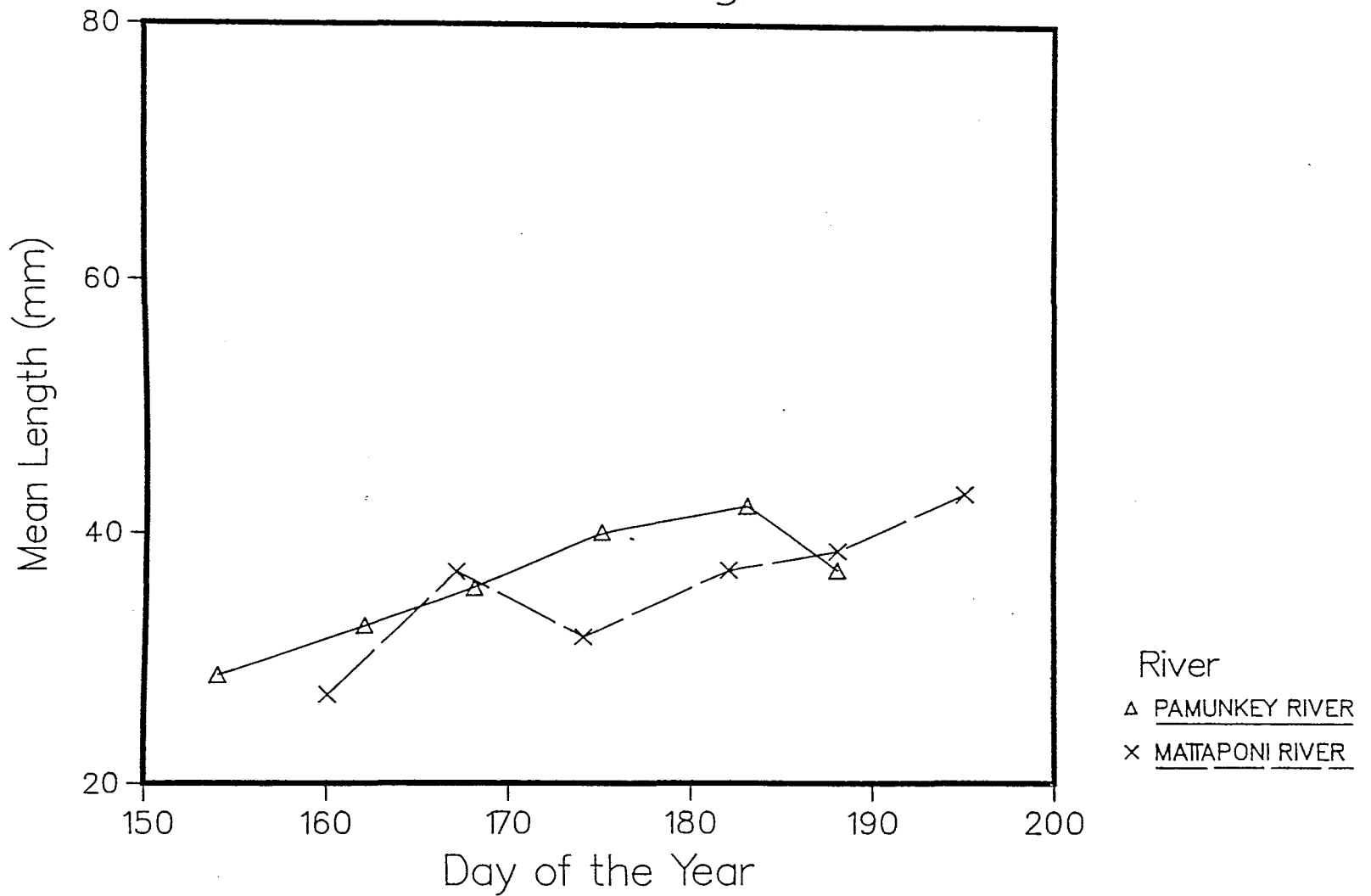


Figure 2.3. Growth Curves for Juvenile American Shad, 1986

